



RIGHT CORNER SOUTH ELEVATION
1:20



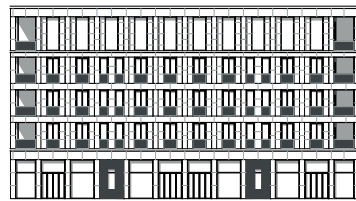
SECTION 1:200



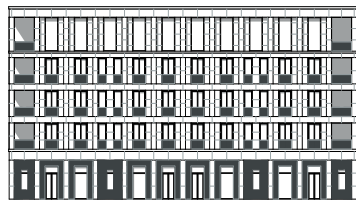
EAST ELEVATION 1:200



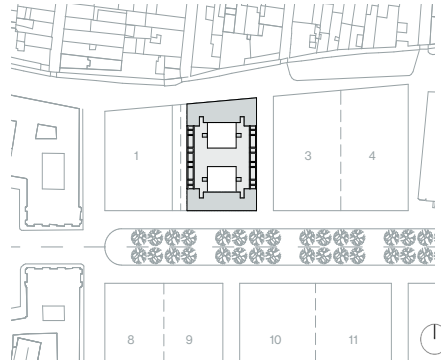
WEST ELEVATION 1:200



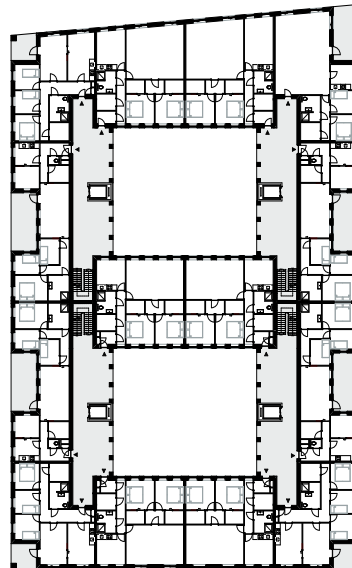
NORTH ELEVATION 1:200



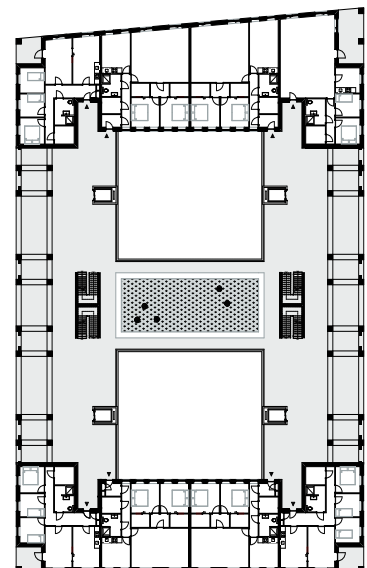
SOUTH ELEVATION 1:200



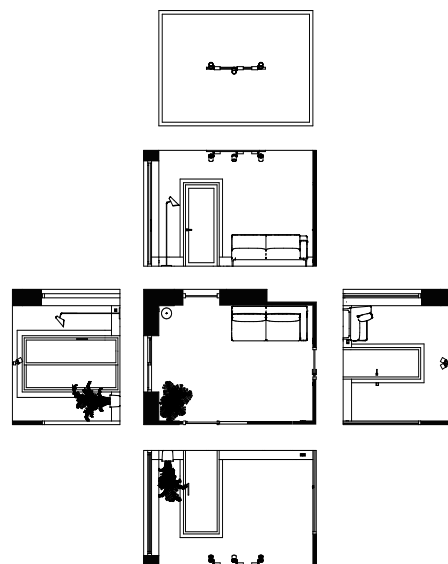
During the analysis of the palazzo, I discovered that the buildings didn't only have a clear distribution in the facade, but also feature smaller details. These details can only be seen when looking better into the buildings. In this specific design, these details can be seen in the different lines in the facade and in the small pattern in the balustrades, which can only be seen when closely looked upon. These details aren't noticeable directly, but they do contribute to the complete look of the facade.



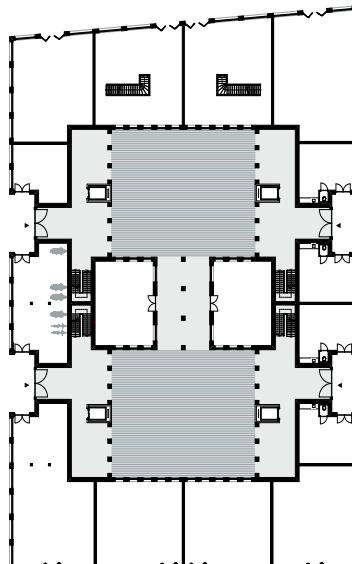
2ND & 3RD FLOOR 1:200



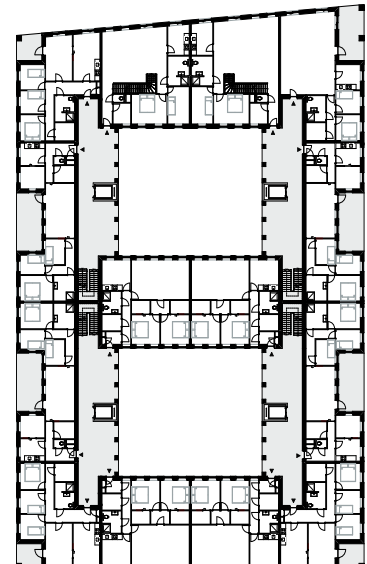
4TH FLOOR 1:200



TYPICAL LIVING ROOM 80M² APARTMENT 1:50



GROUND FLOOR 1:200



1ST FLOOR 1:200