

Elementair Ontwerp - RAvB

Rotterdamse Academie van Bouwkunst




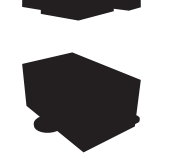

Studio Elementair Ontwerp
2019-2020, semester 1

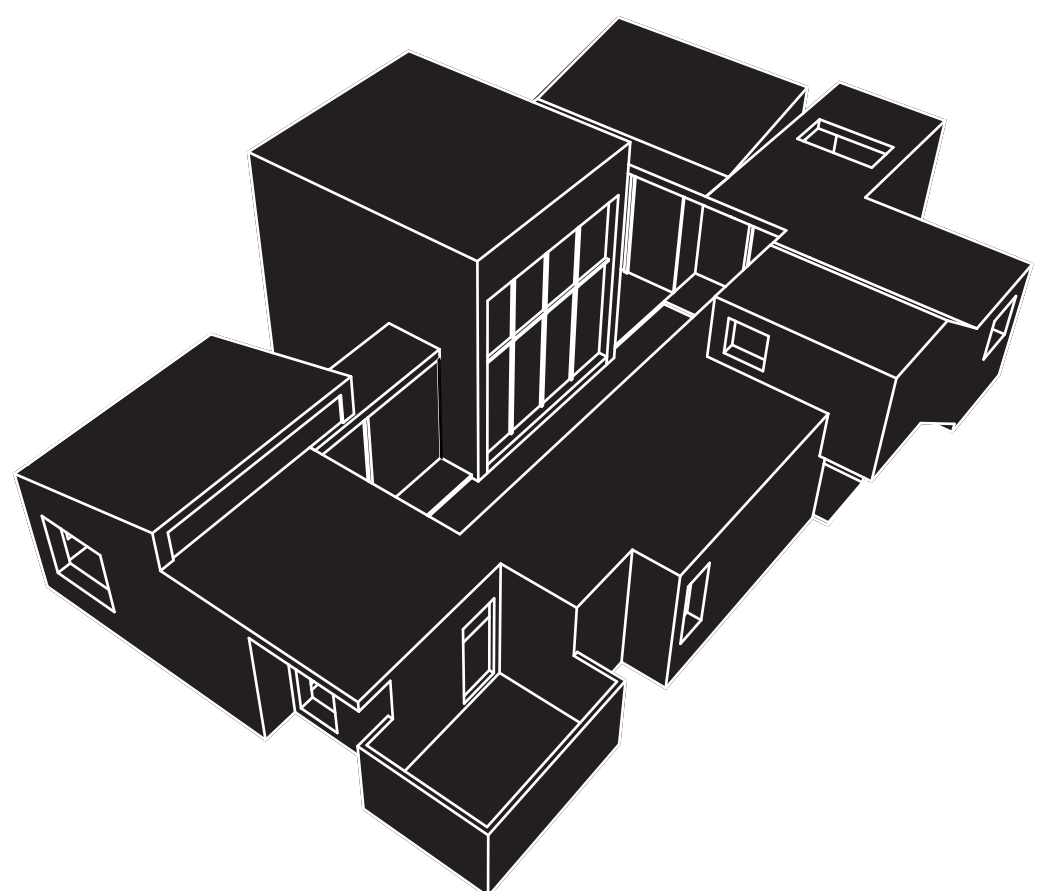
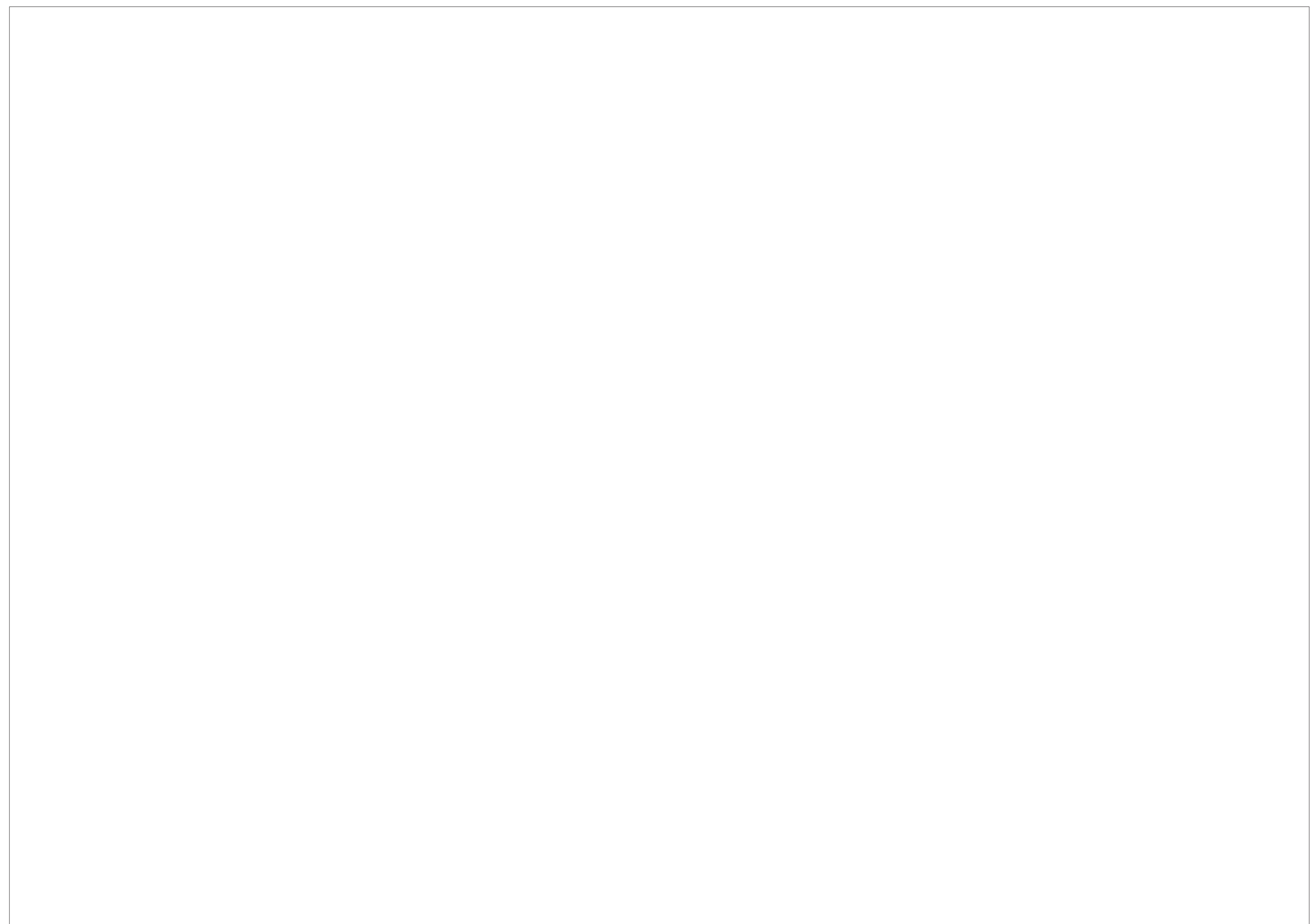
Jona ten Napel
0996429

Docenten/begeleiding

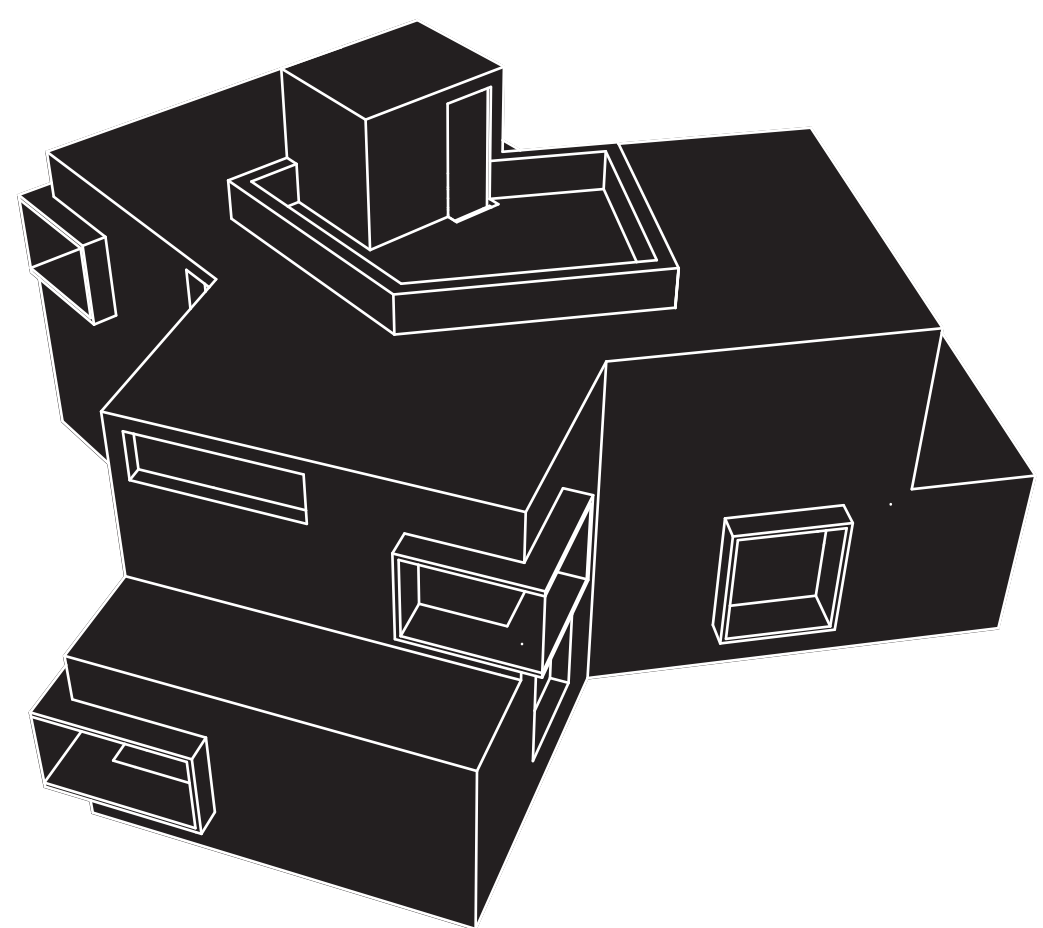
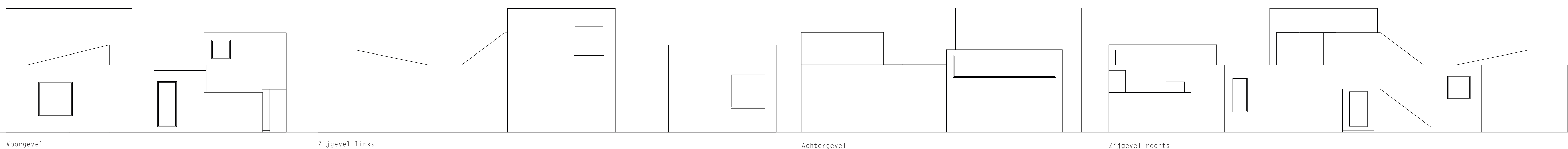
Jasper de Haan
Ernie Mellegers
Violette Schönberger
Kras Bocklandt

Opdrachten, ontwerp een:

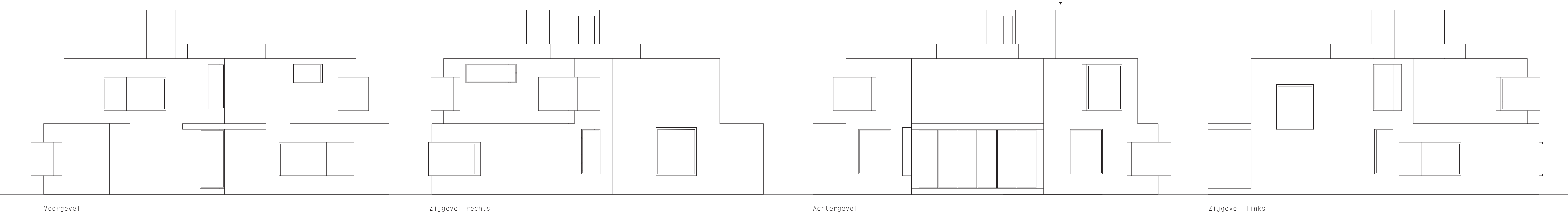
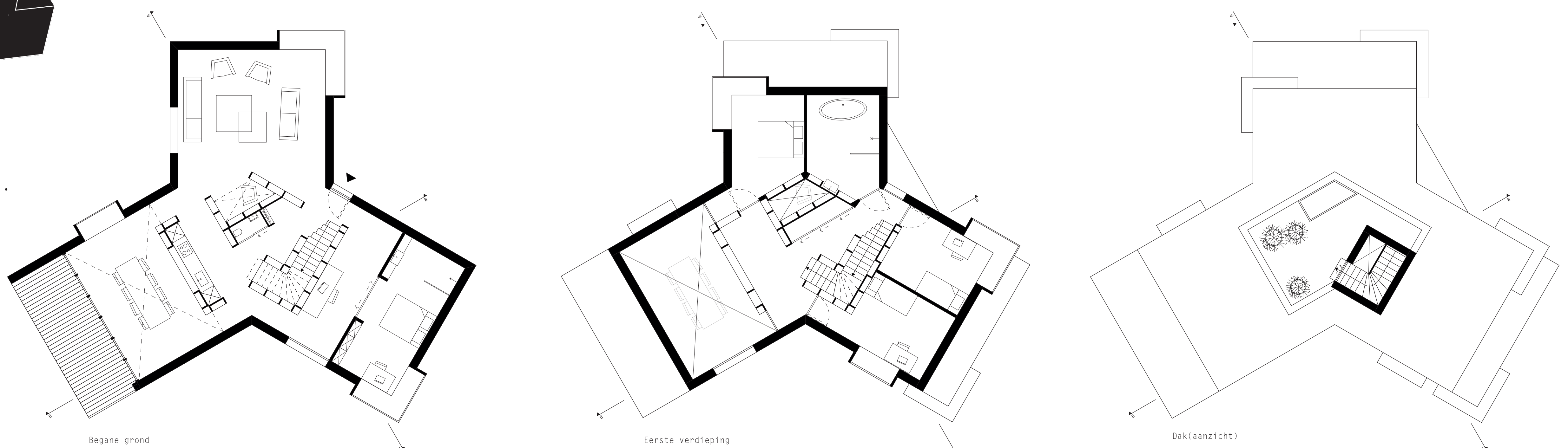
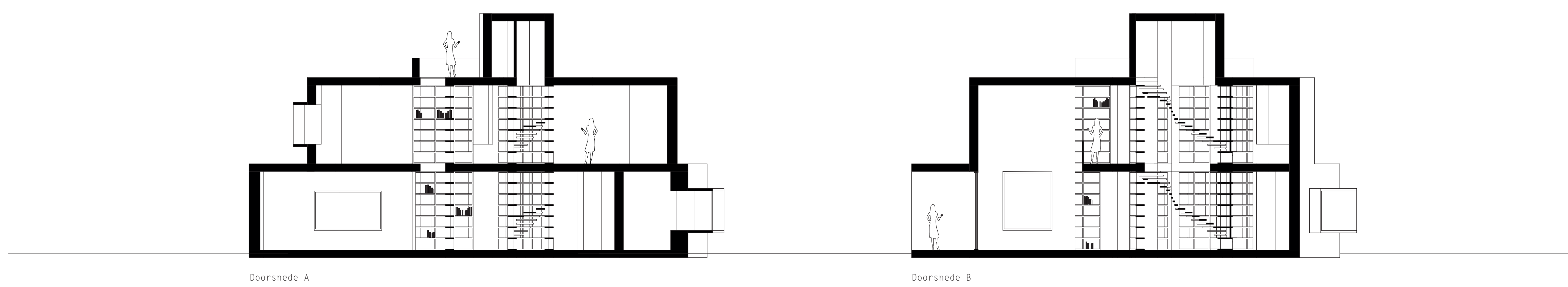
-  Huis met zwembad van 3x12,5m
-  Huis met 250m boekenplank
-  Huis zonder ramen in de gevel
-  Huis in een fictieve kubus van 10x10x10m
-  Huis zonder gangen

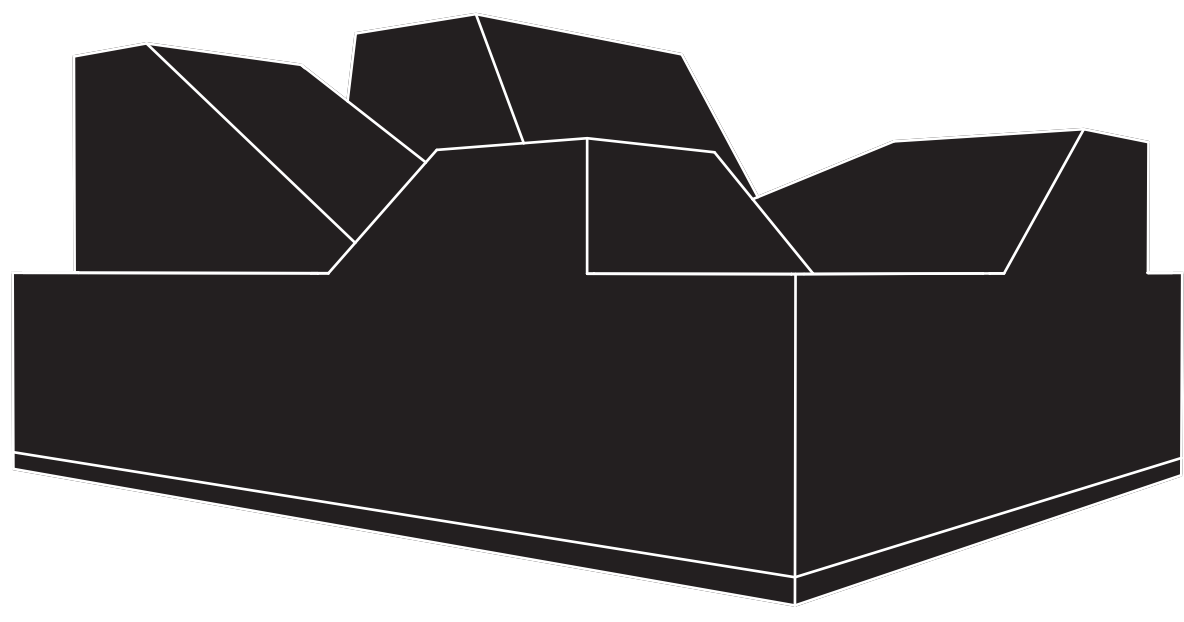


Huis met 2 tuinen.

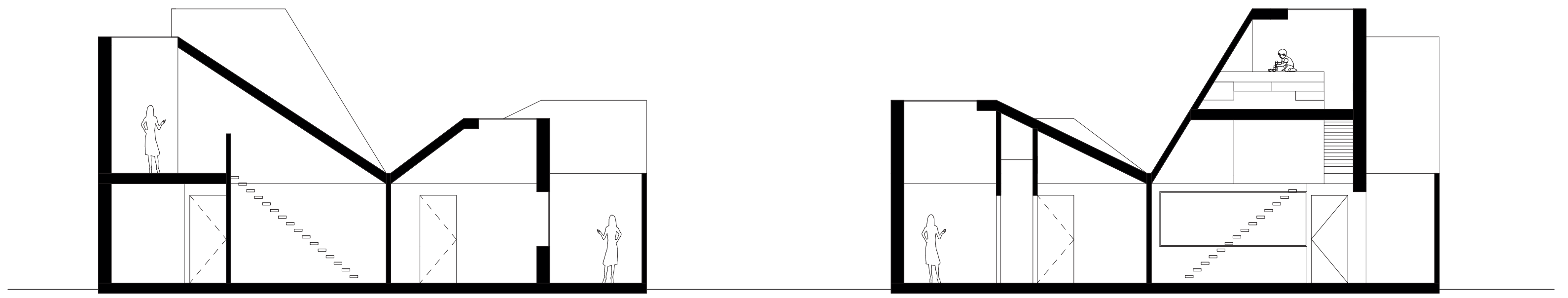


Huis met 6 bloemkozijnen.



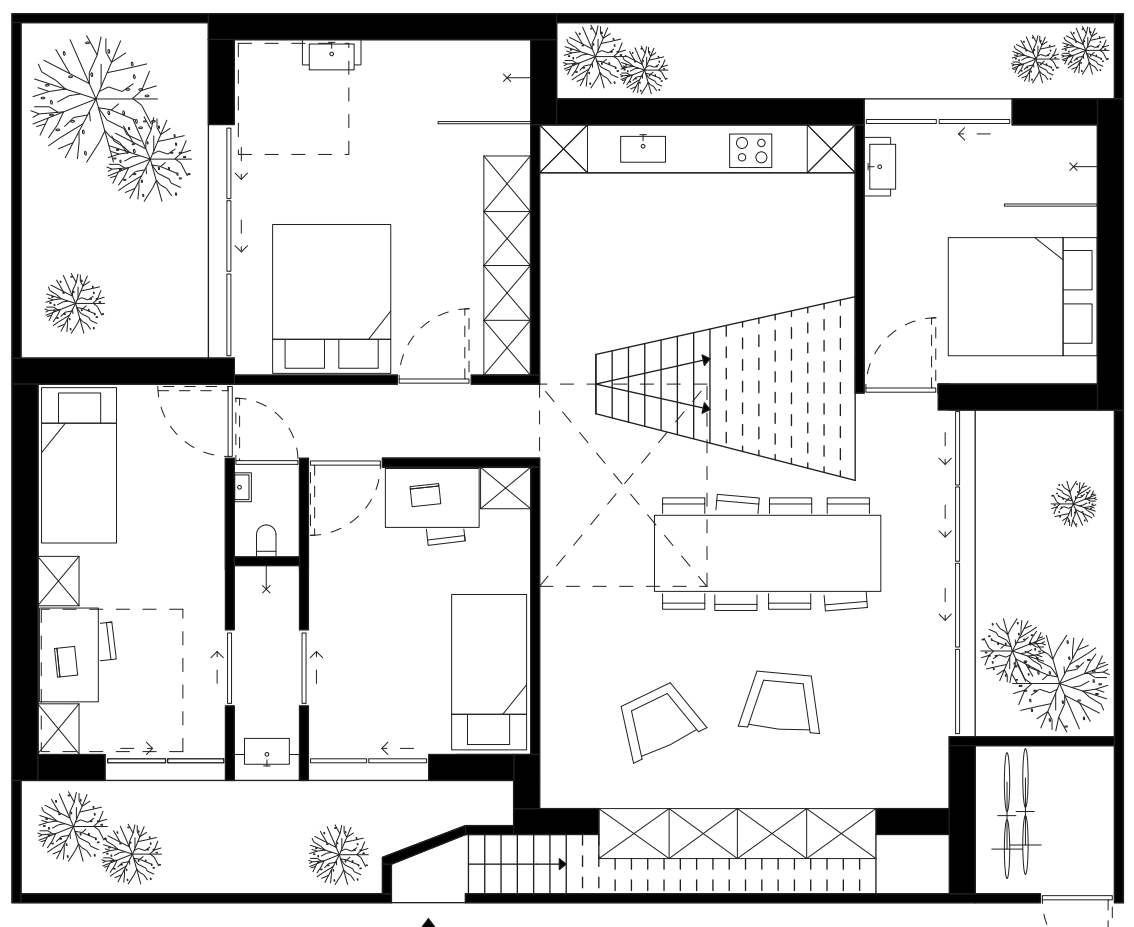


Huis met 5 dakramen.

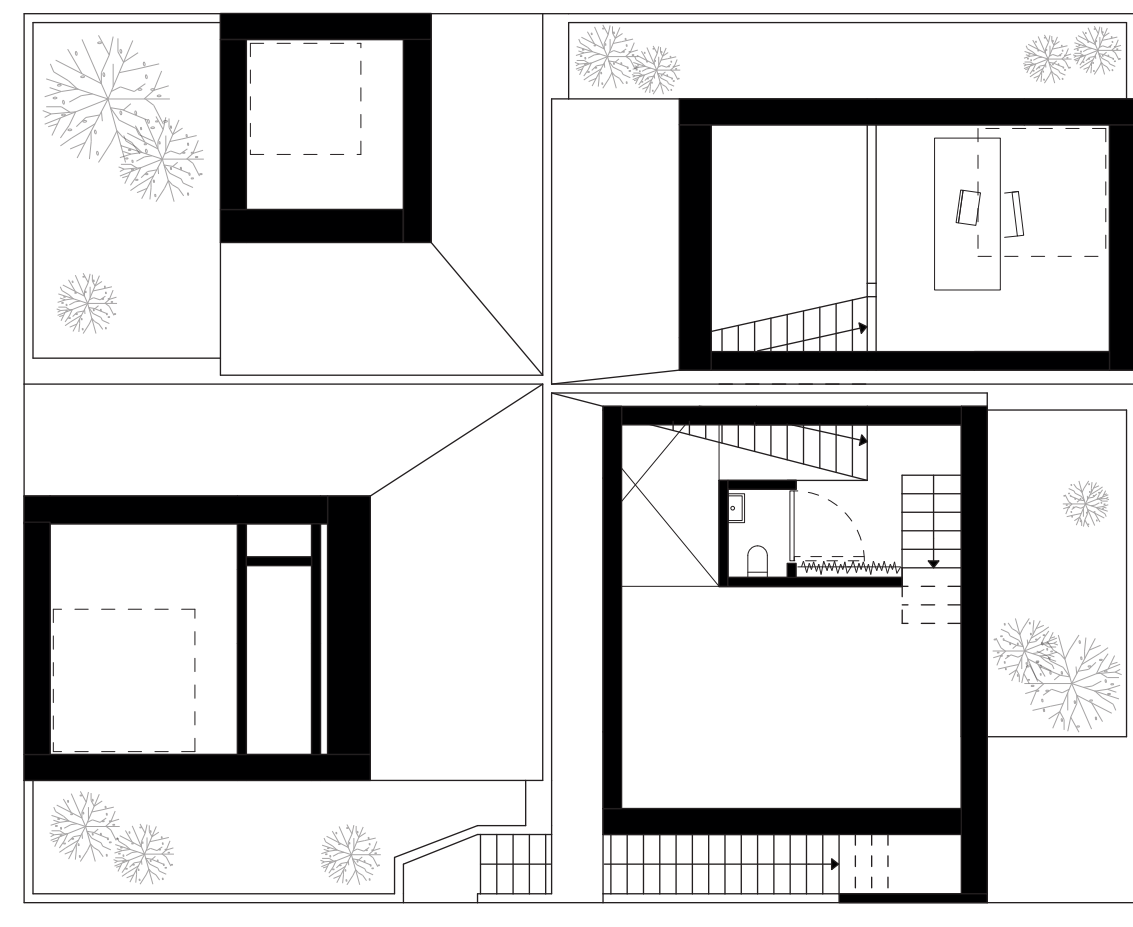


Doorsnede A

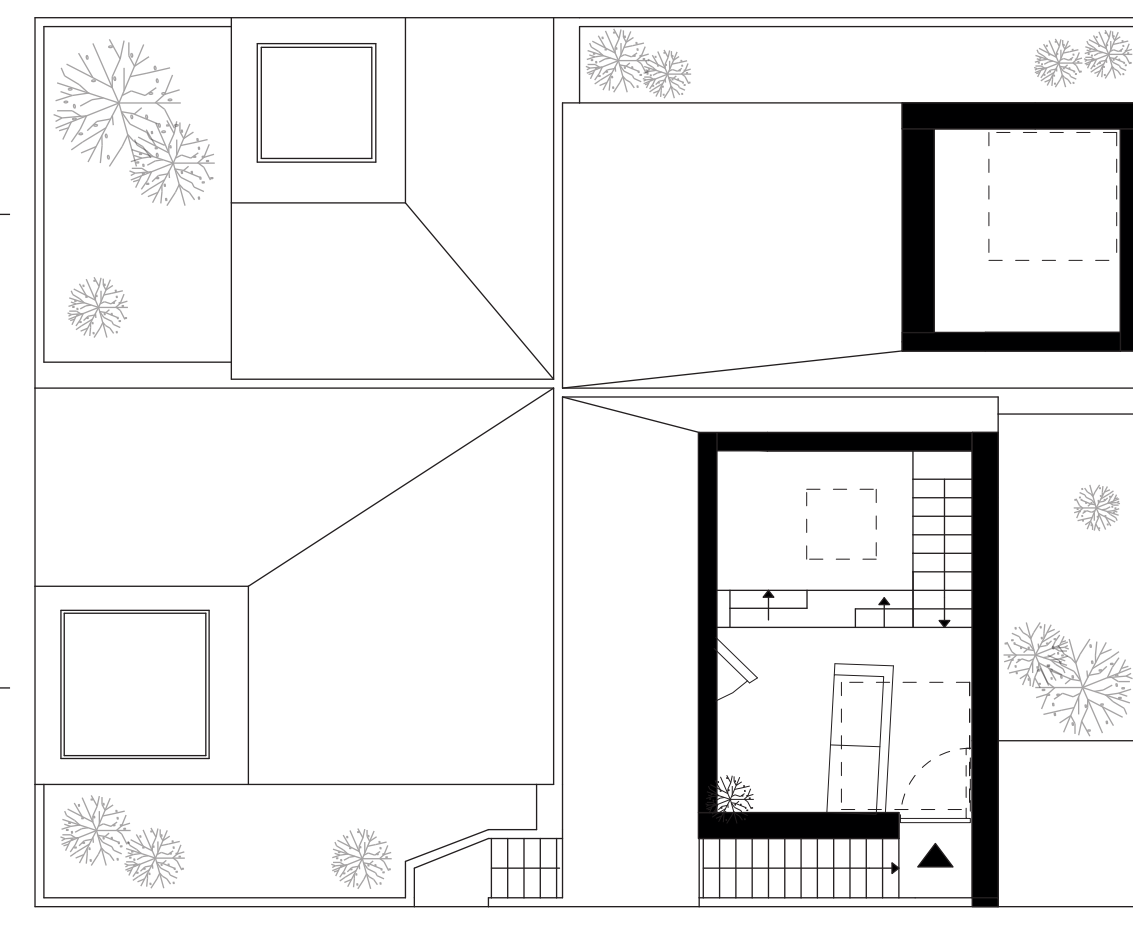
Doorsnede B



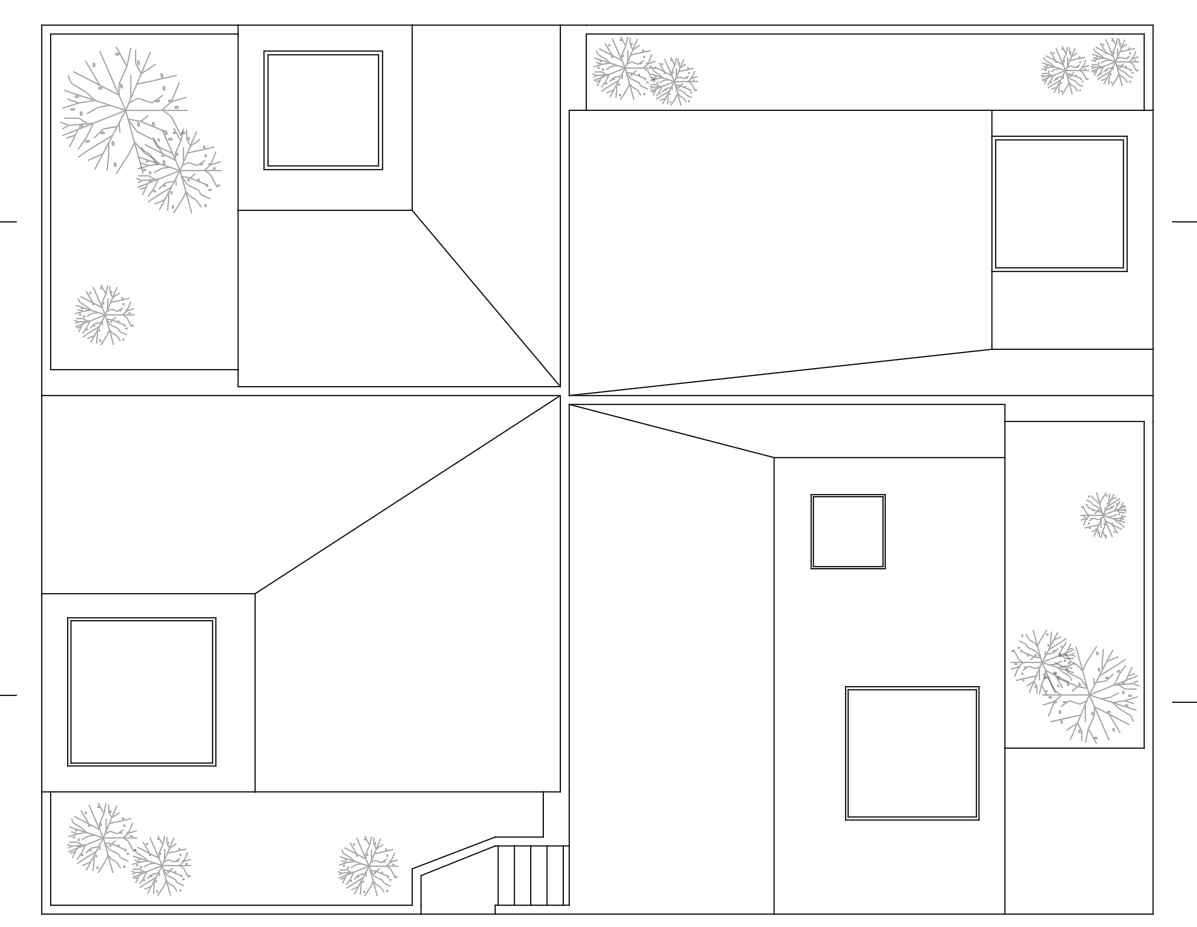
Begane grond



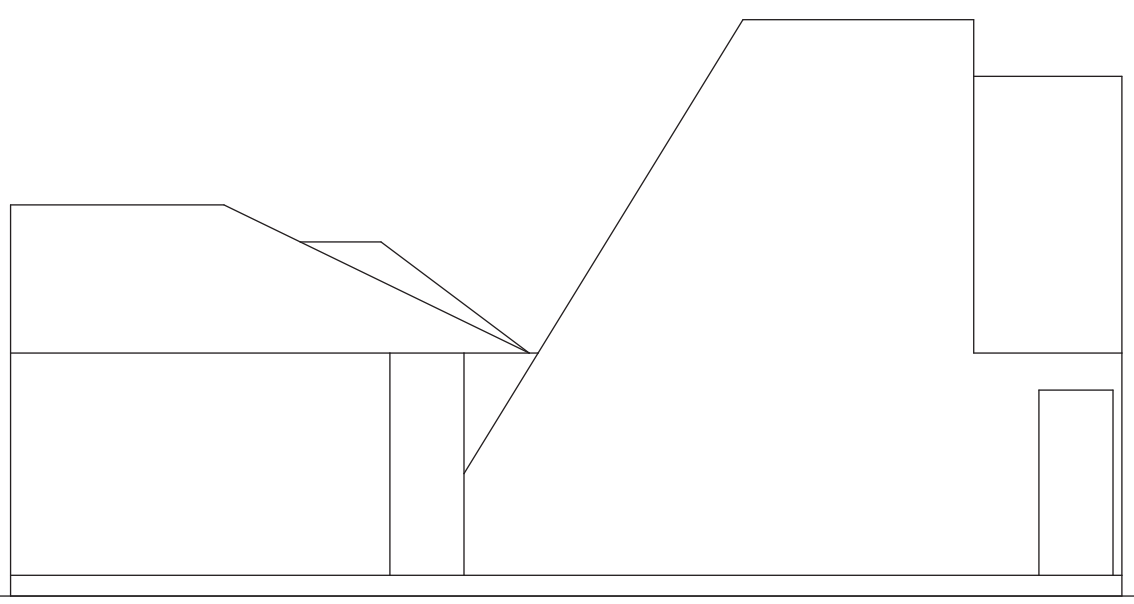
Eerste verdieping (+3000mm)



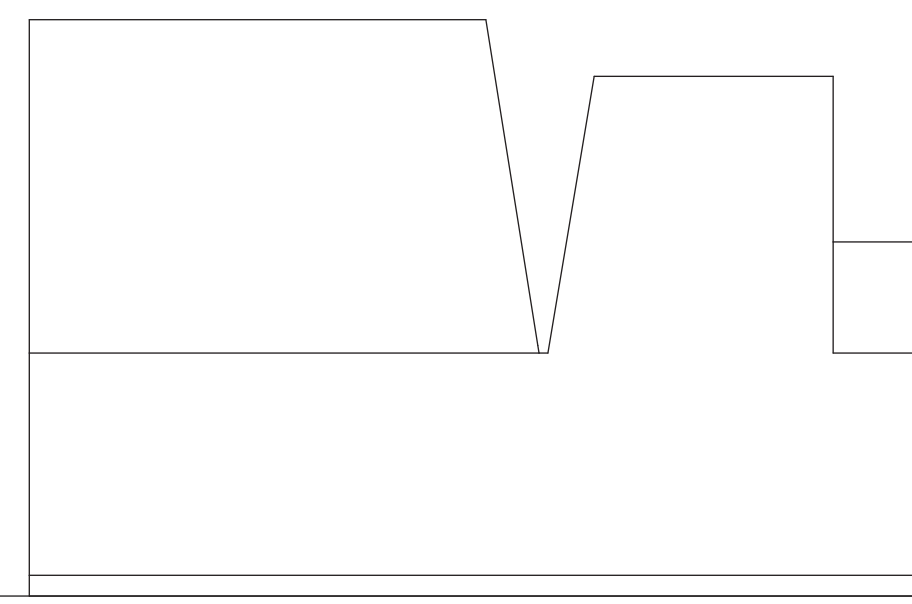
Anderhalve verdieping (+4750mm)



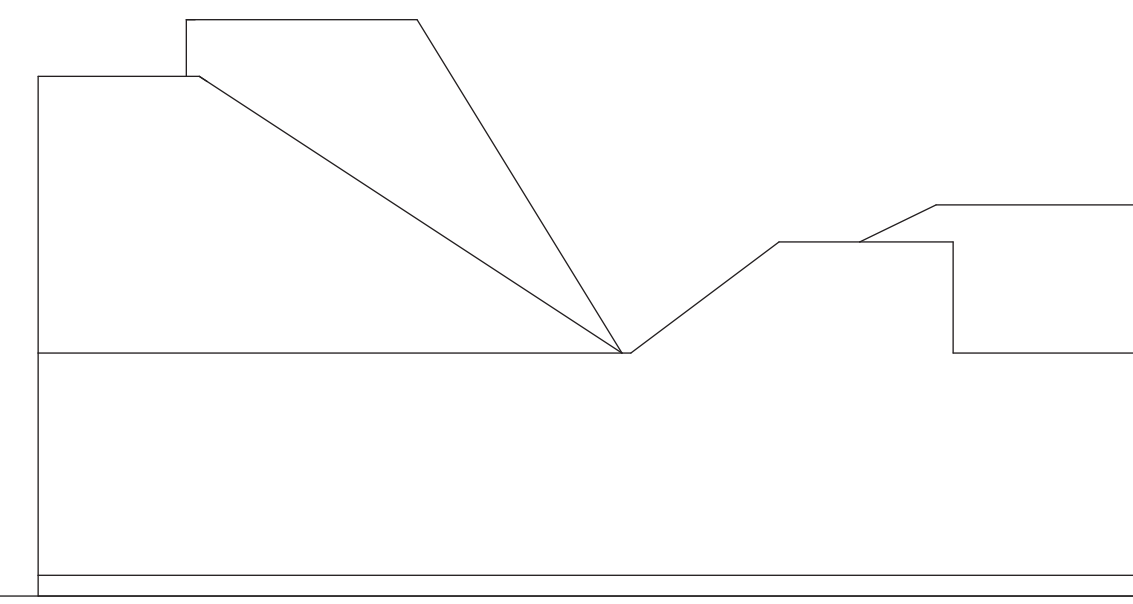
Dakaanzicht



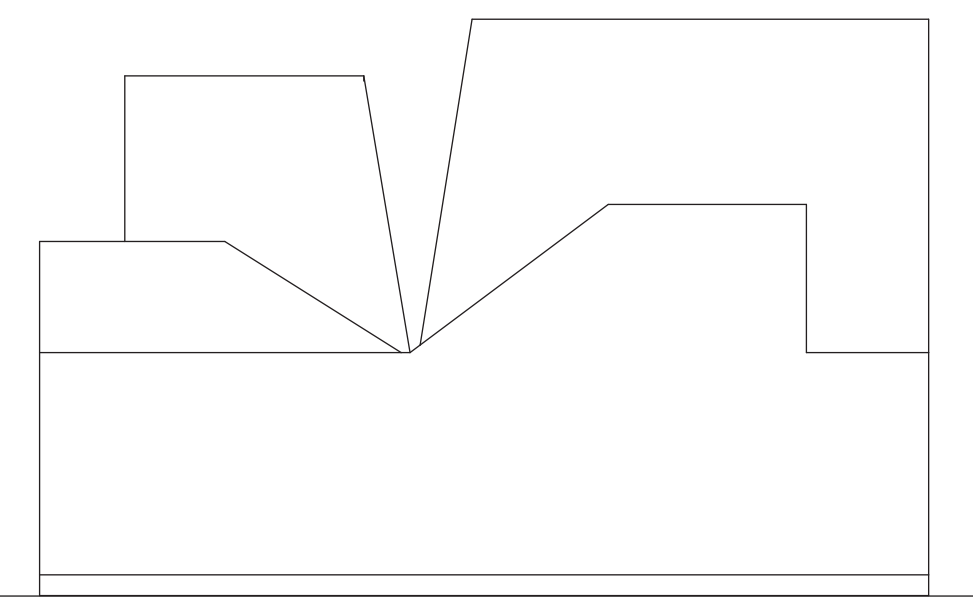
Voorgevel



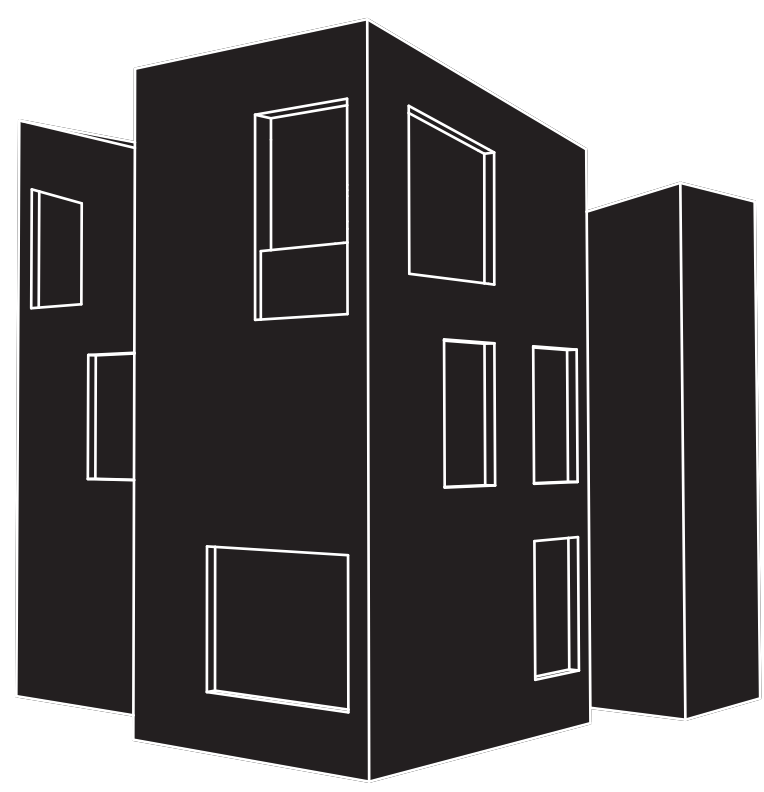
Zijgevel rechts



Achtergevel



Zijgevel links

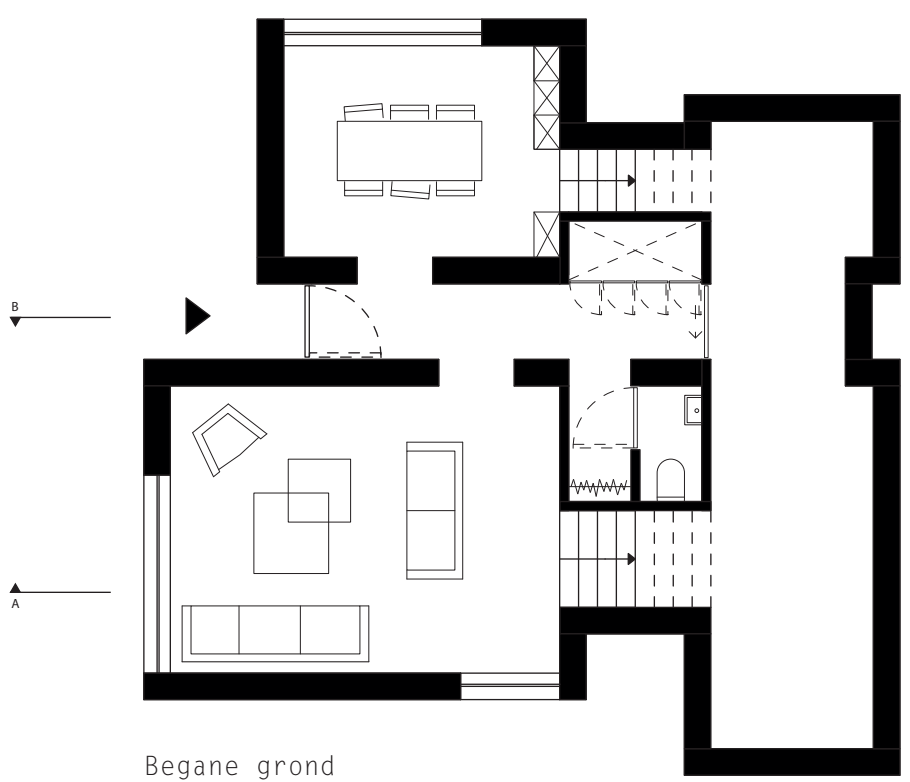


Huis met 6 trappen.

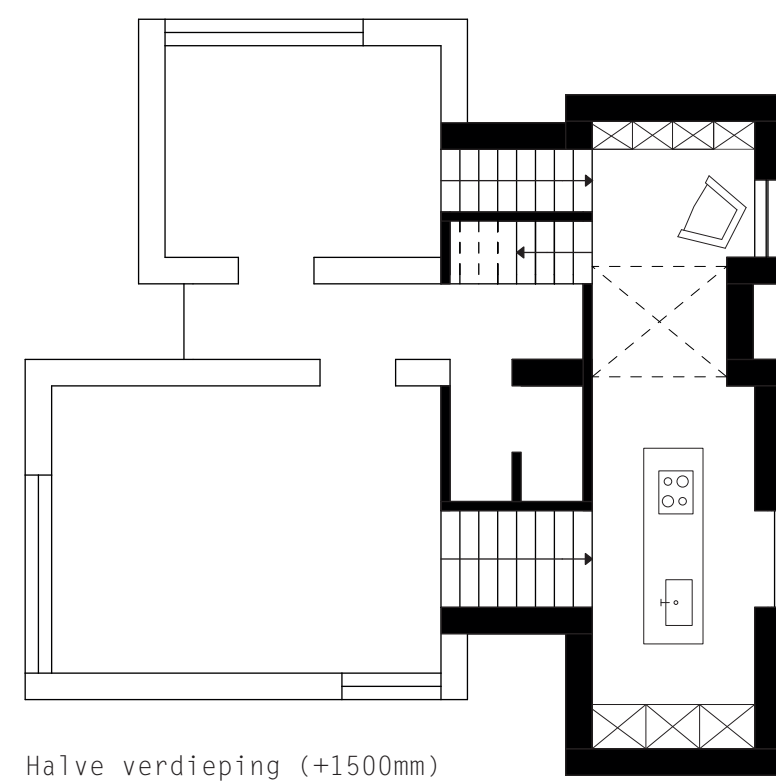


Doorsnede A

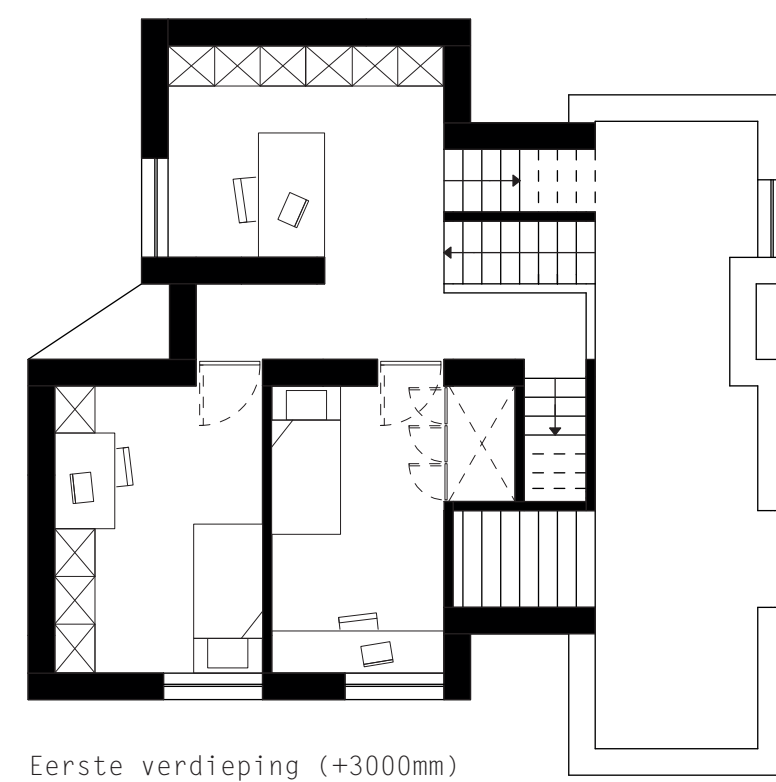
Doorsnede B



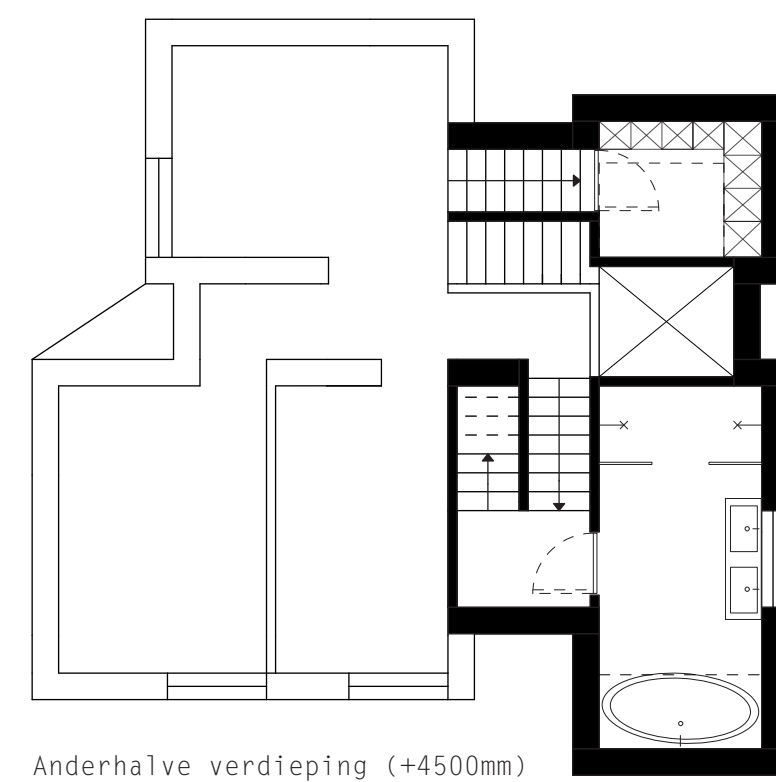
Begane grond



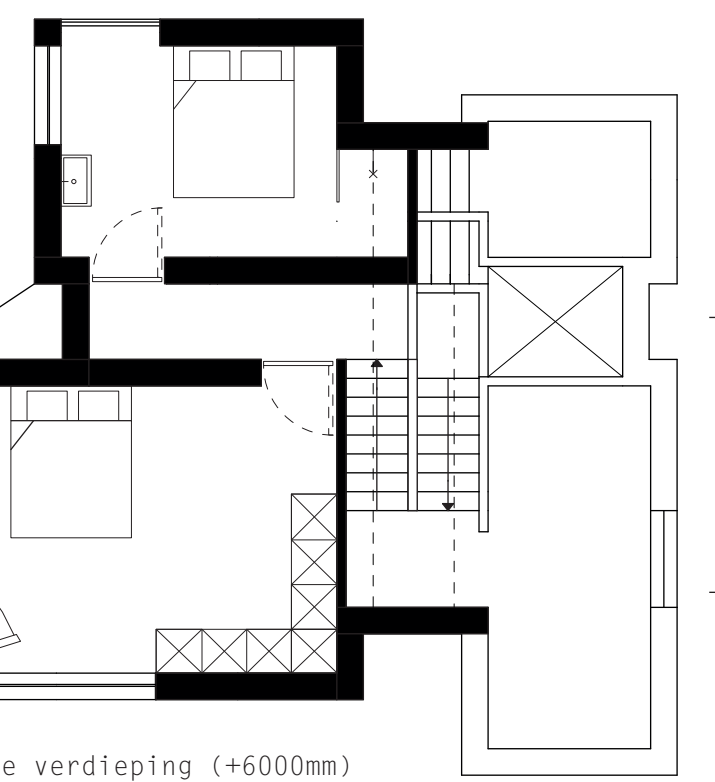
Halve verdieping (+1500mm)



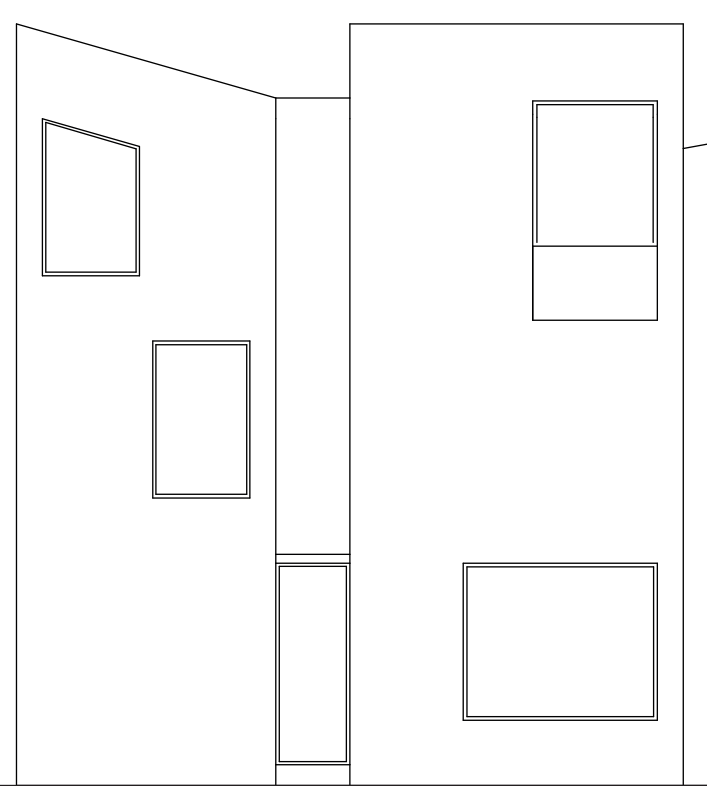
Eerste verdieping (+3000mm)



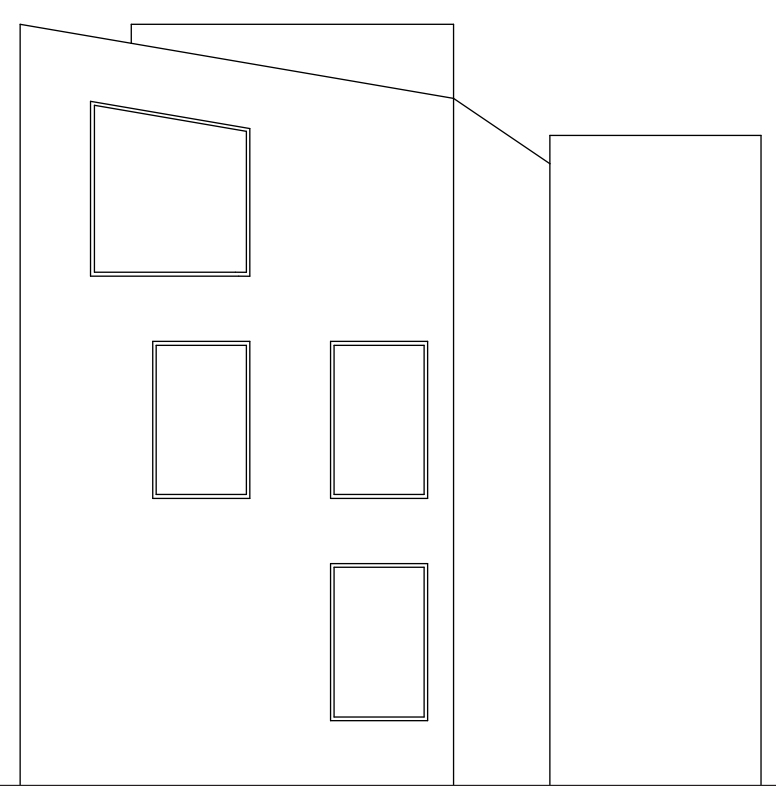
Anderhalve verdieping (+4500mm)



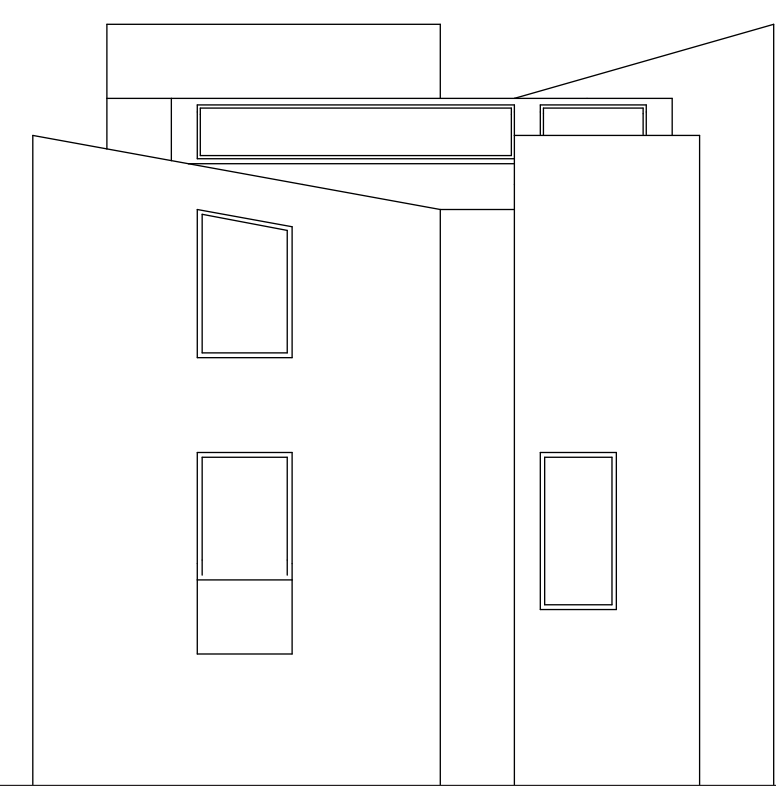
Tweede verdieping (+6000mm)



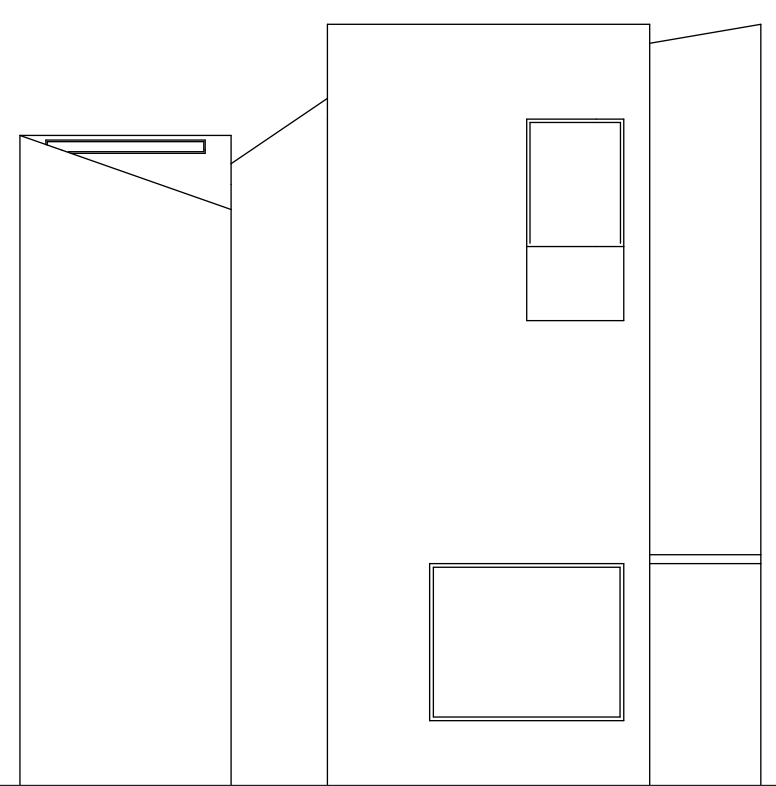
Voorgevel



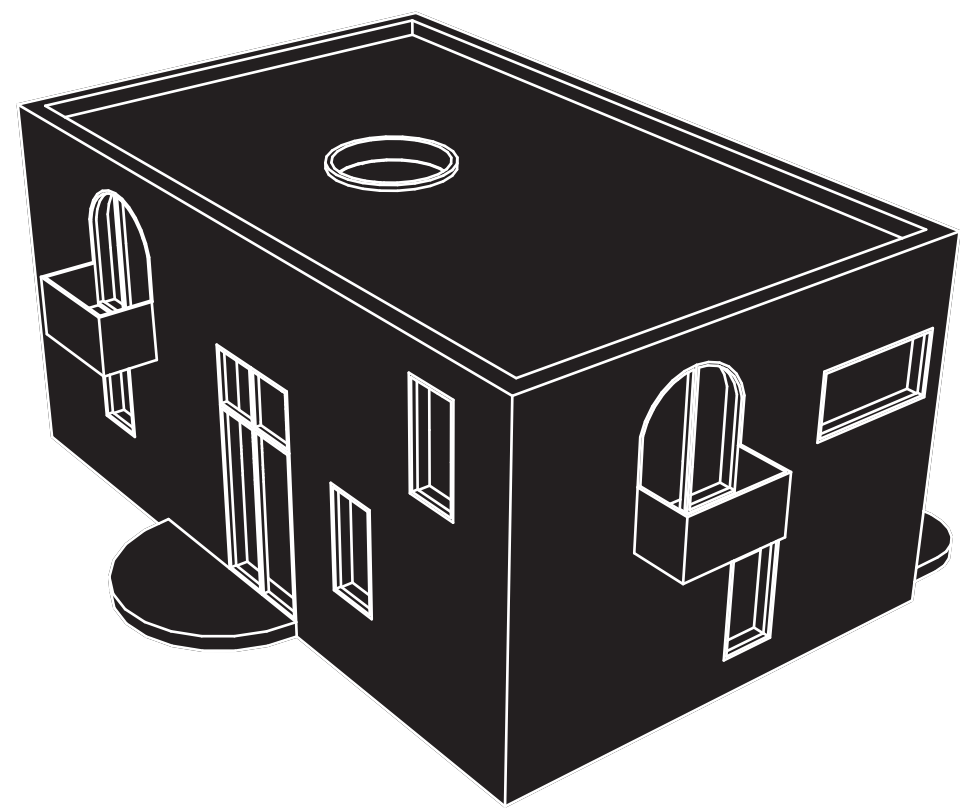
Zijgevel rechts



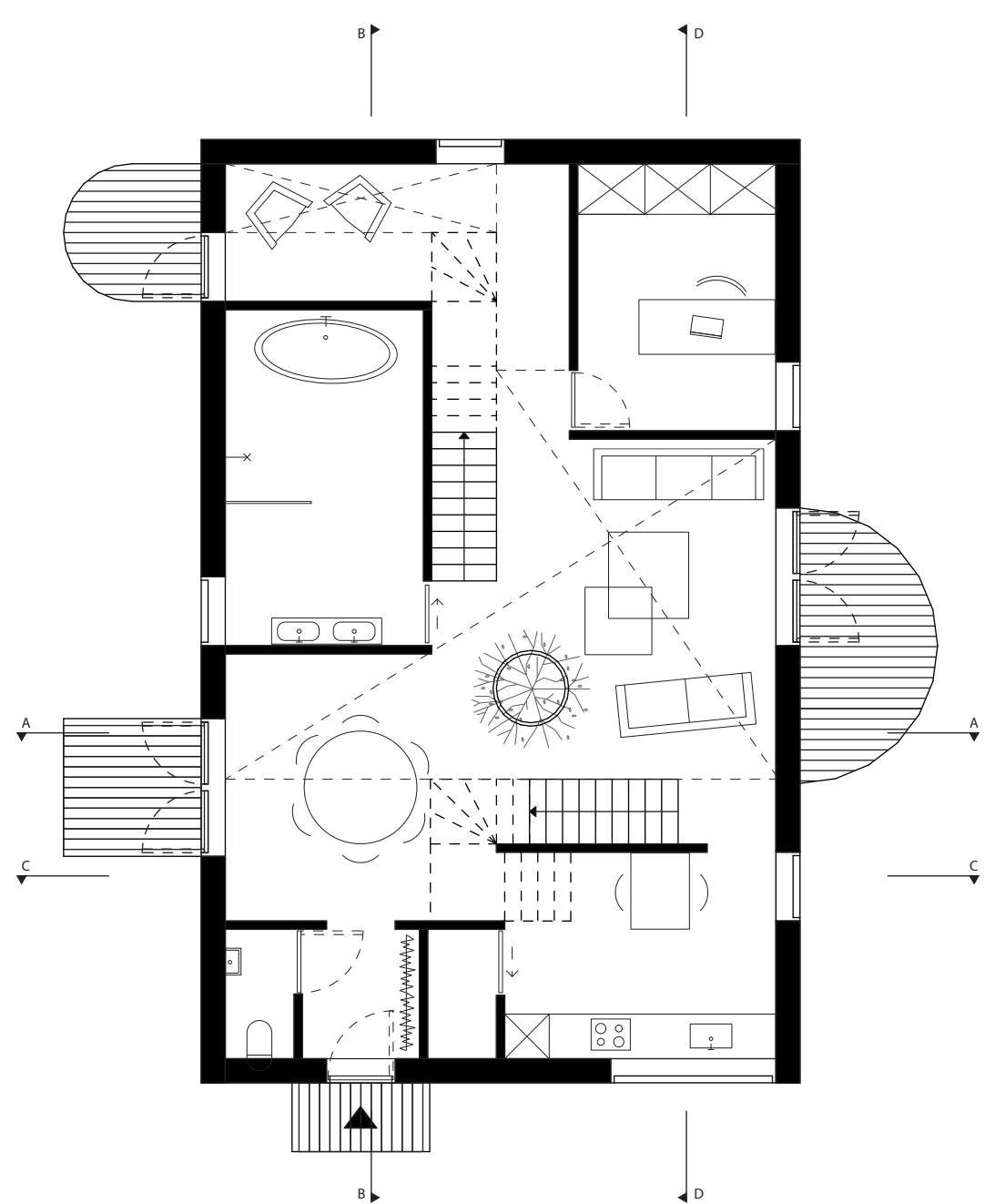
Achtergevel



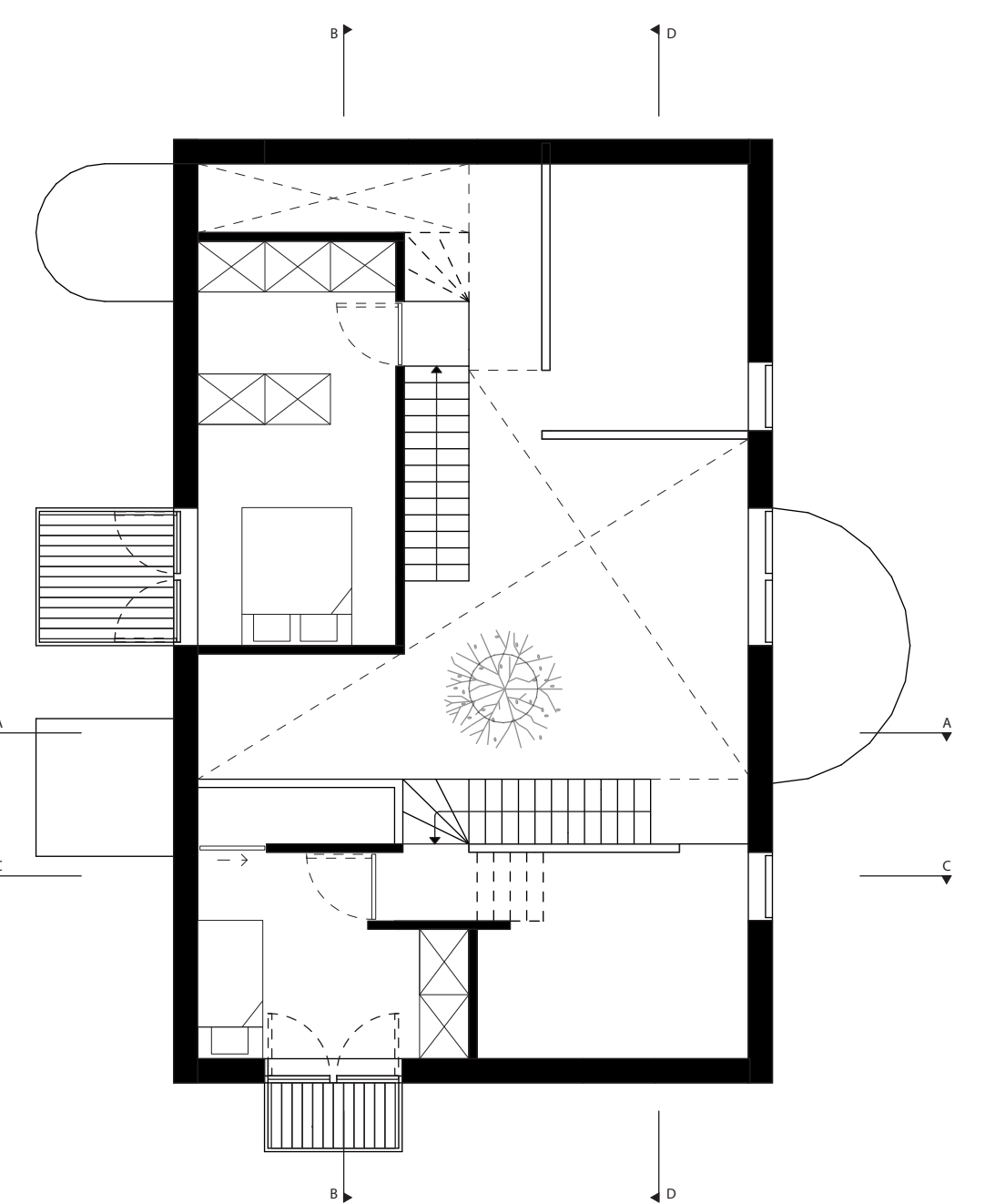
Zijgevel links



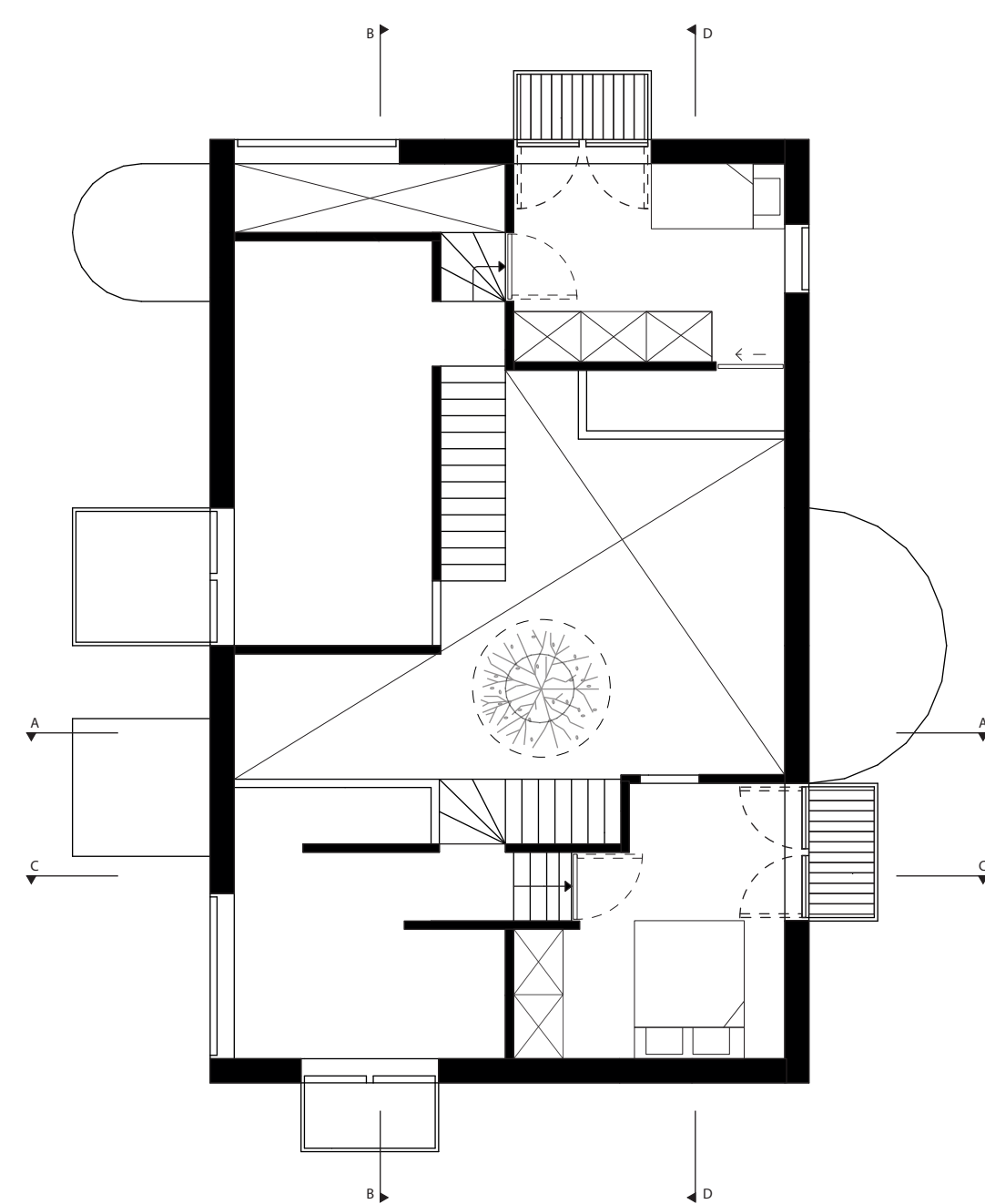
Huis met 10 balkons.



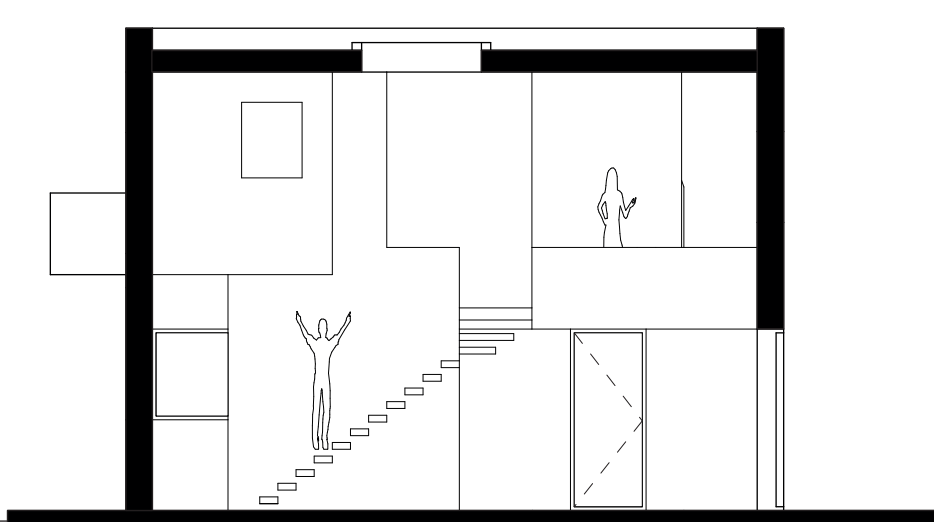
Begane grond



Eerste verdieping (+3000mm)



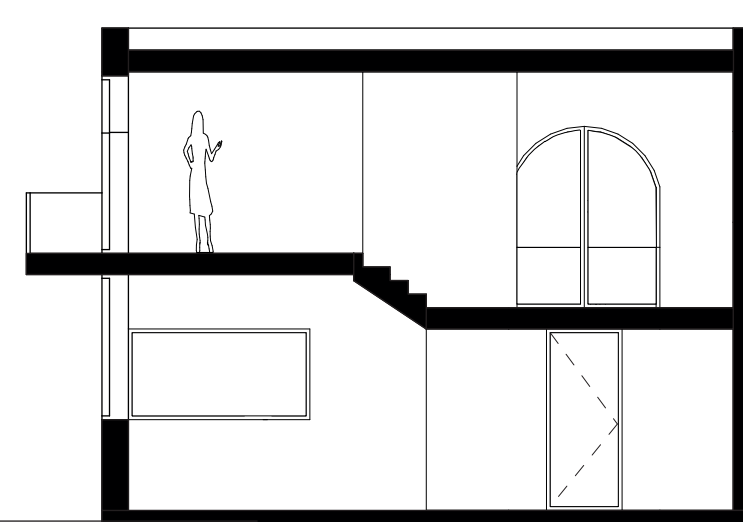
Anderhalve verdieping (+4500mm)



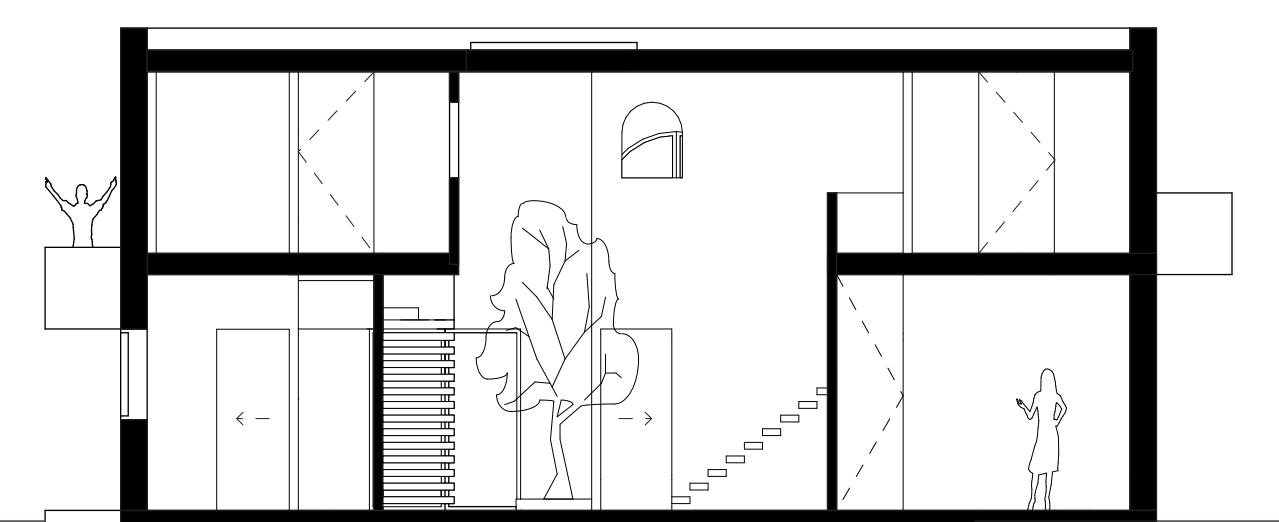
Doorsnede A



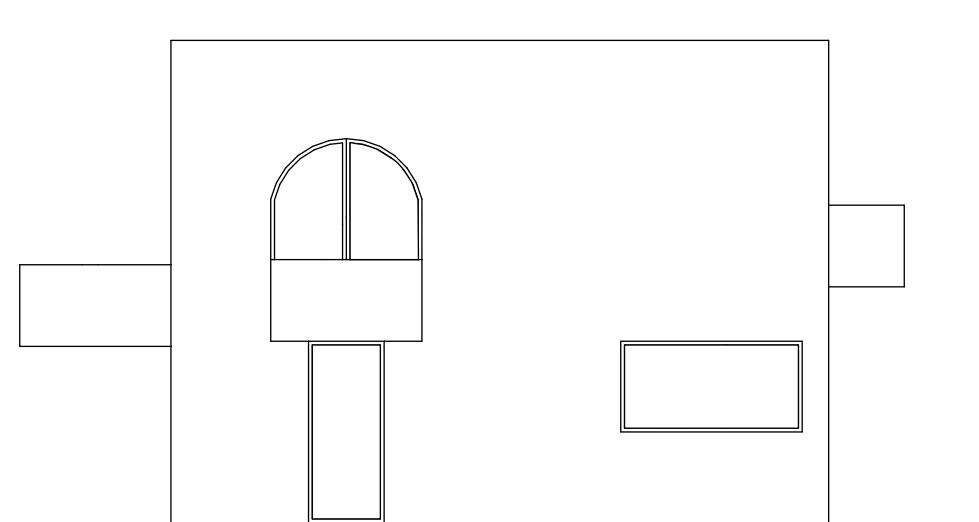
Doorsnede B



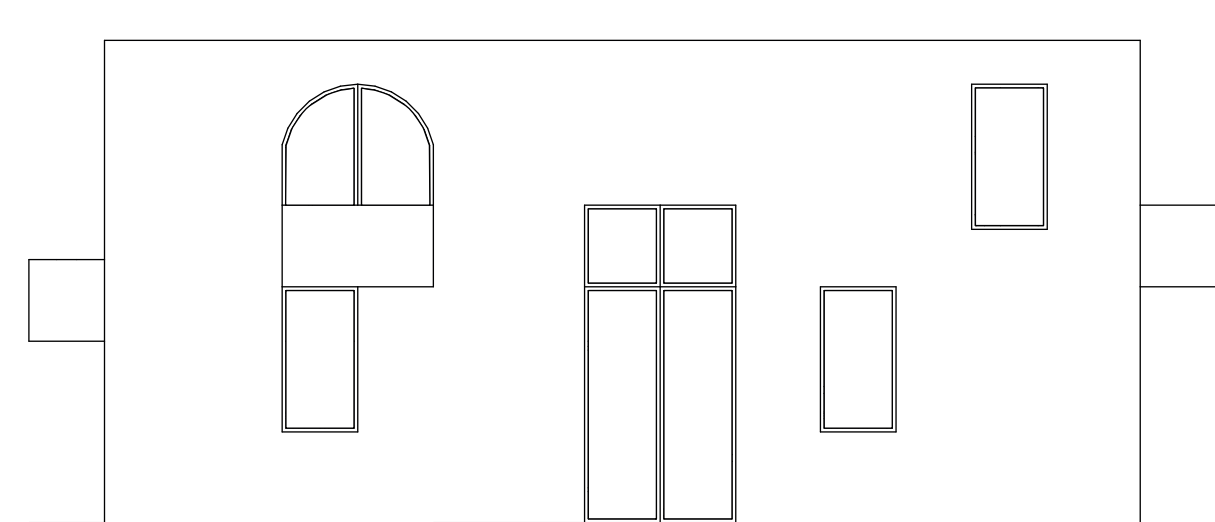
Doorsnede C



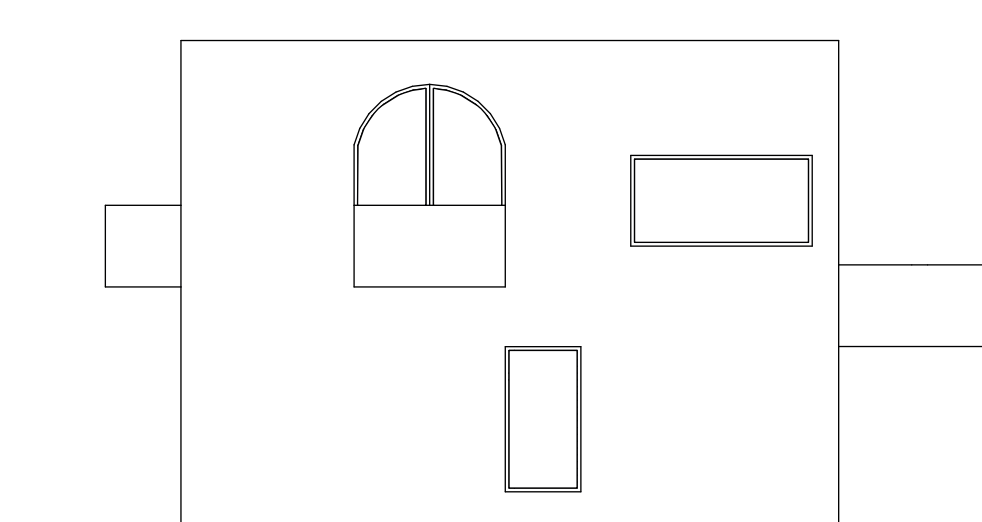
Doorsnede D



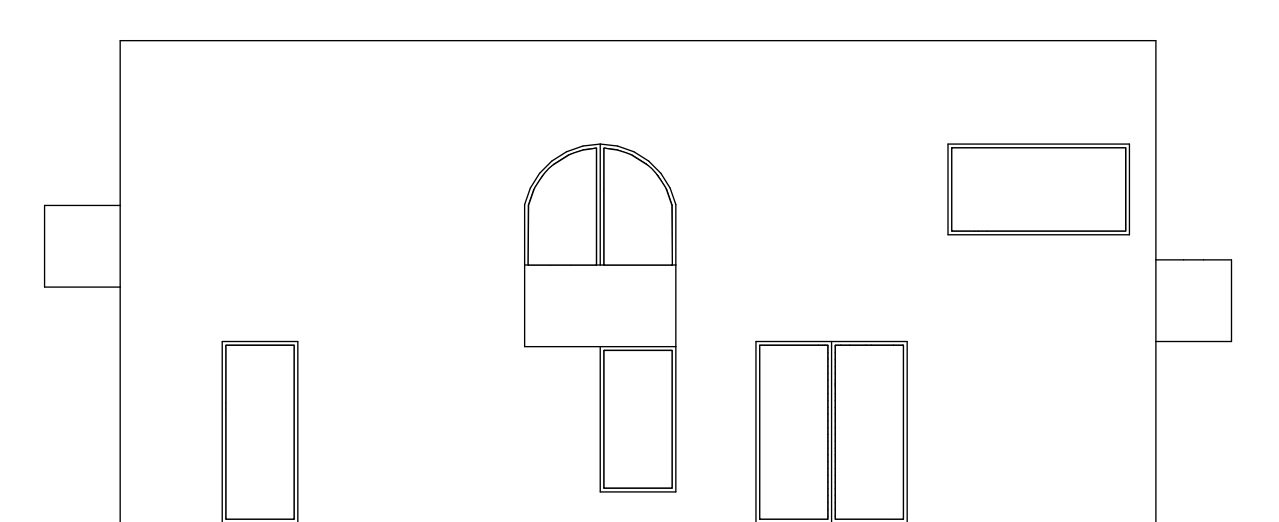
Voorgevel



Zijgevel rechts



Achtergevel



Linker zijgevel