

Broeikas - Forcing House
Melvin van den Houdt

Programma



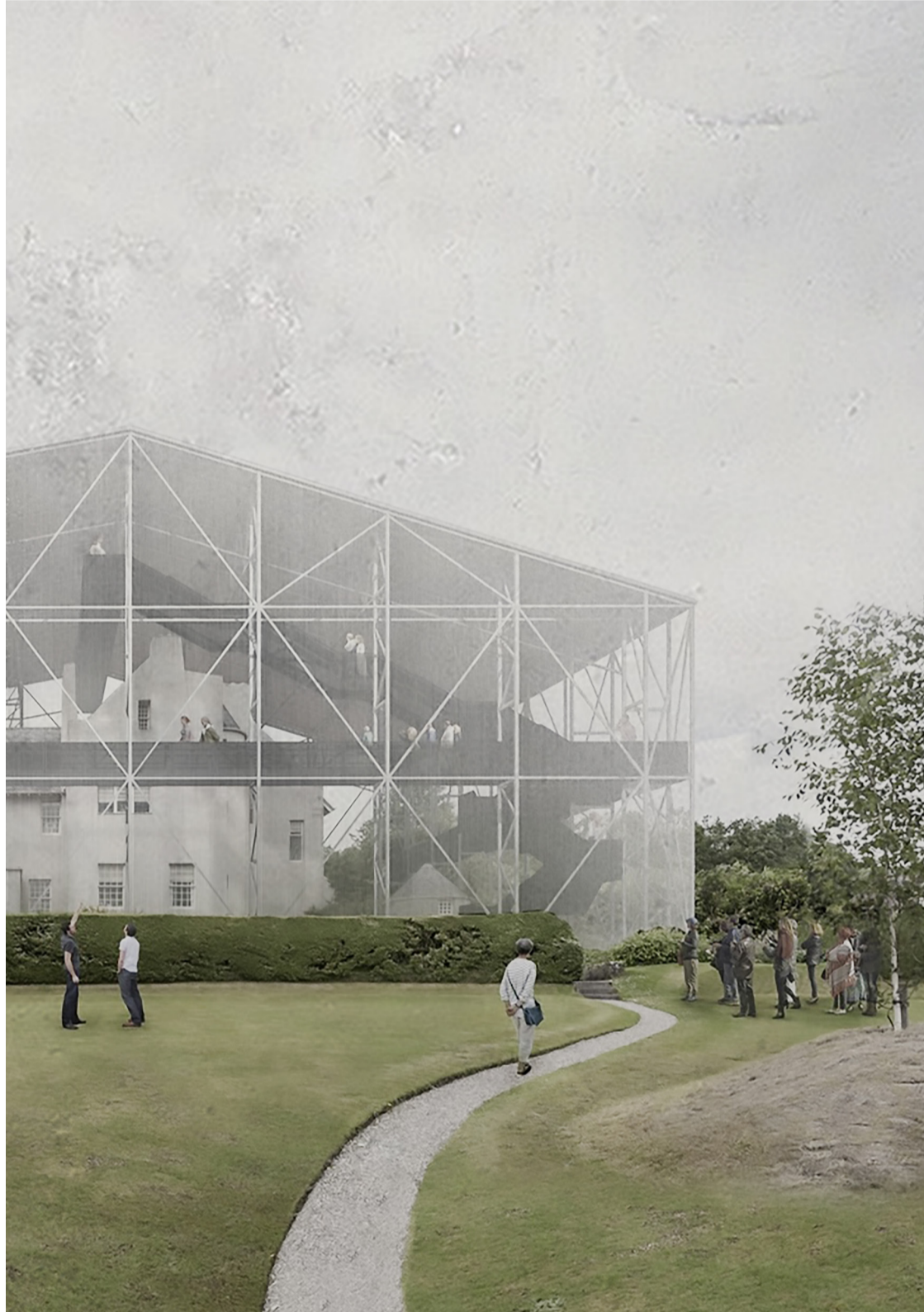
Toegankelijke programma om samenkomen te stimuleren

Site



Kwaliteit toekennen aan ruimte om het gebouw heen

Structuur



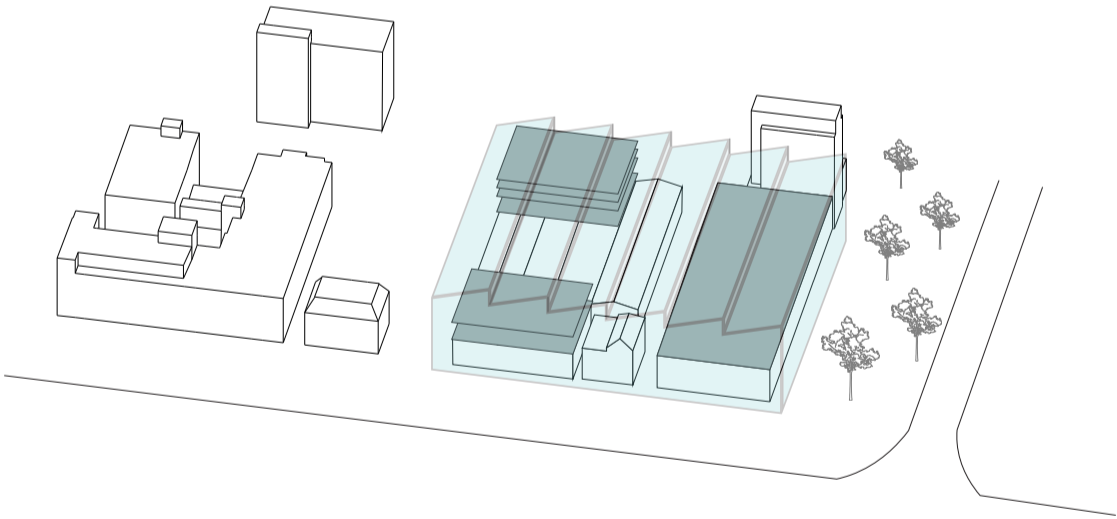
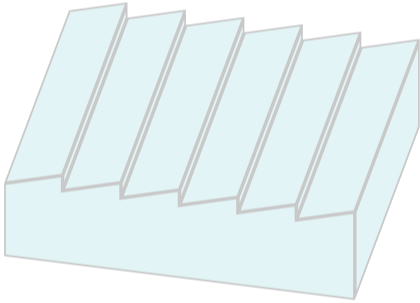
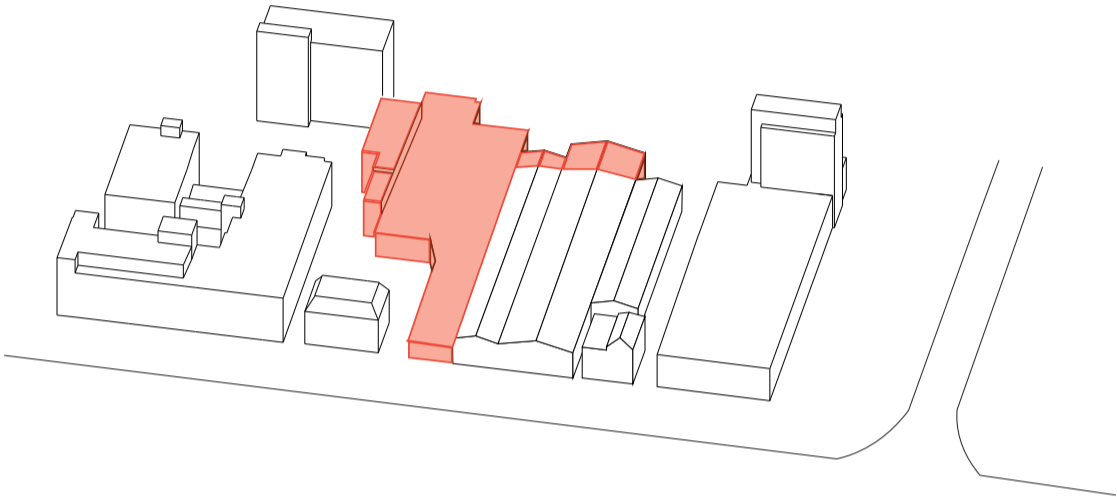
Structuur om het bestaande gebouw heenbouwen

Observatie

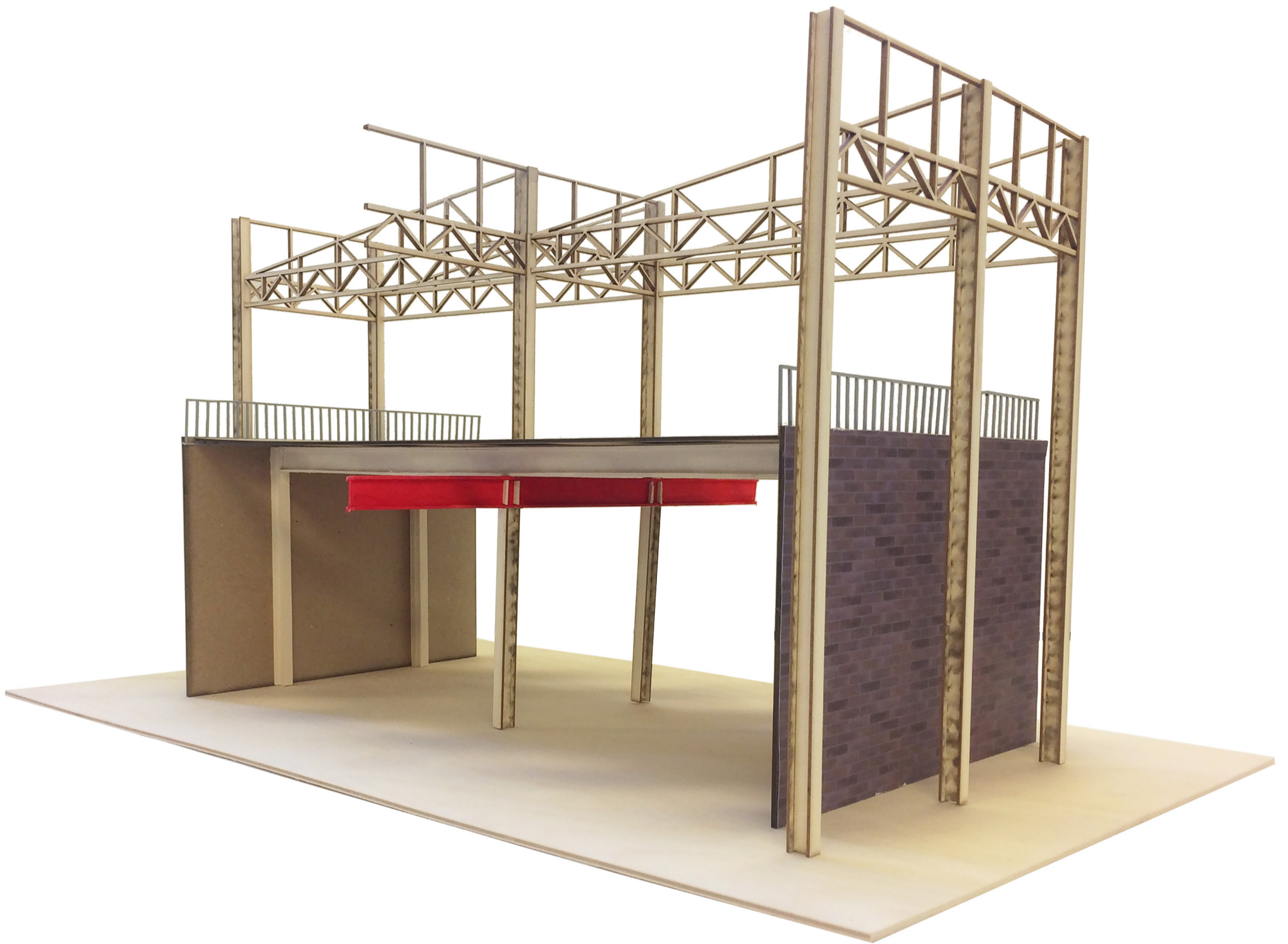


1e hoek interpretatie, structuur door en over het bestaande gebouw heen

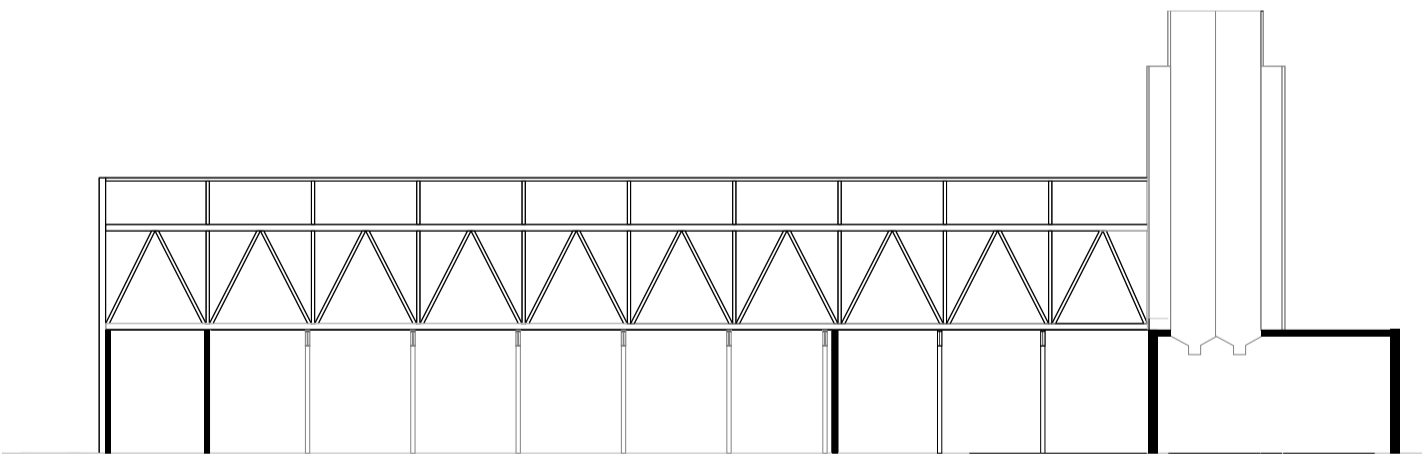
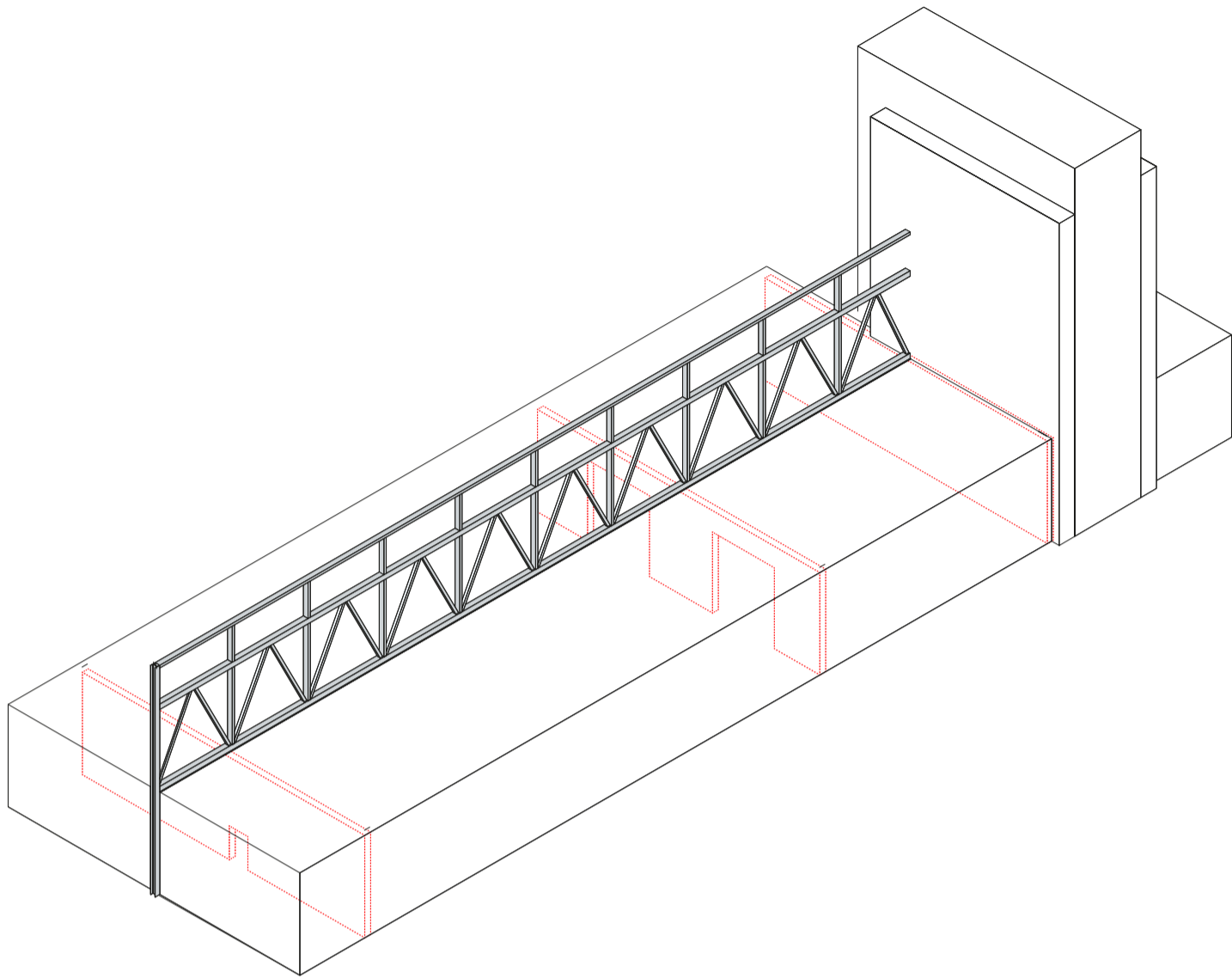
Observatie



Observatie



Principe

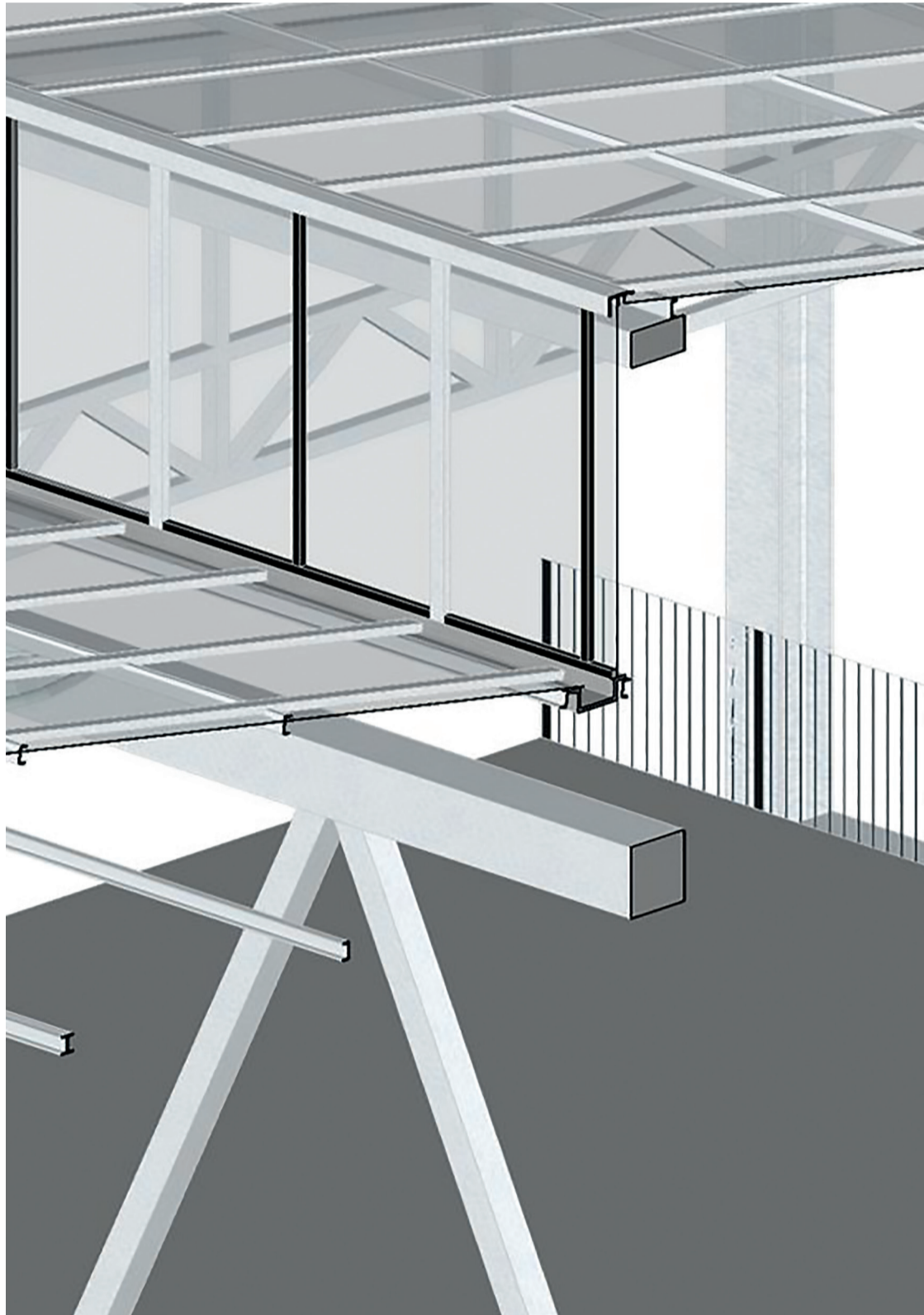


Door het toevoegen van een nieuwe structuur nieuwe ruimtes creëren en bestaande ruimtes in hun waarde laten

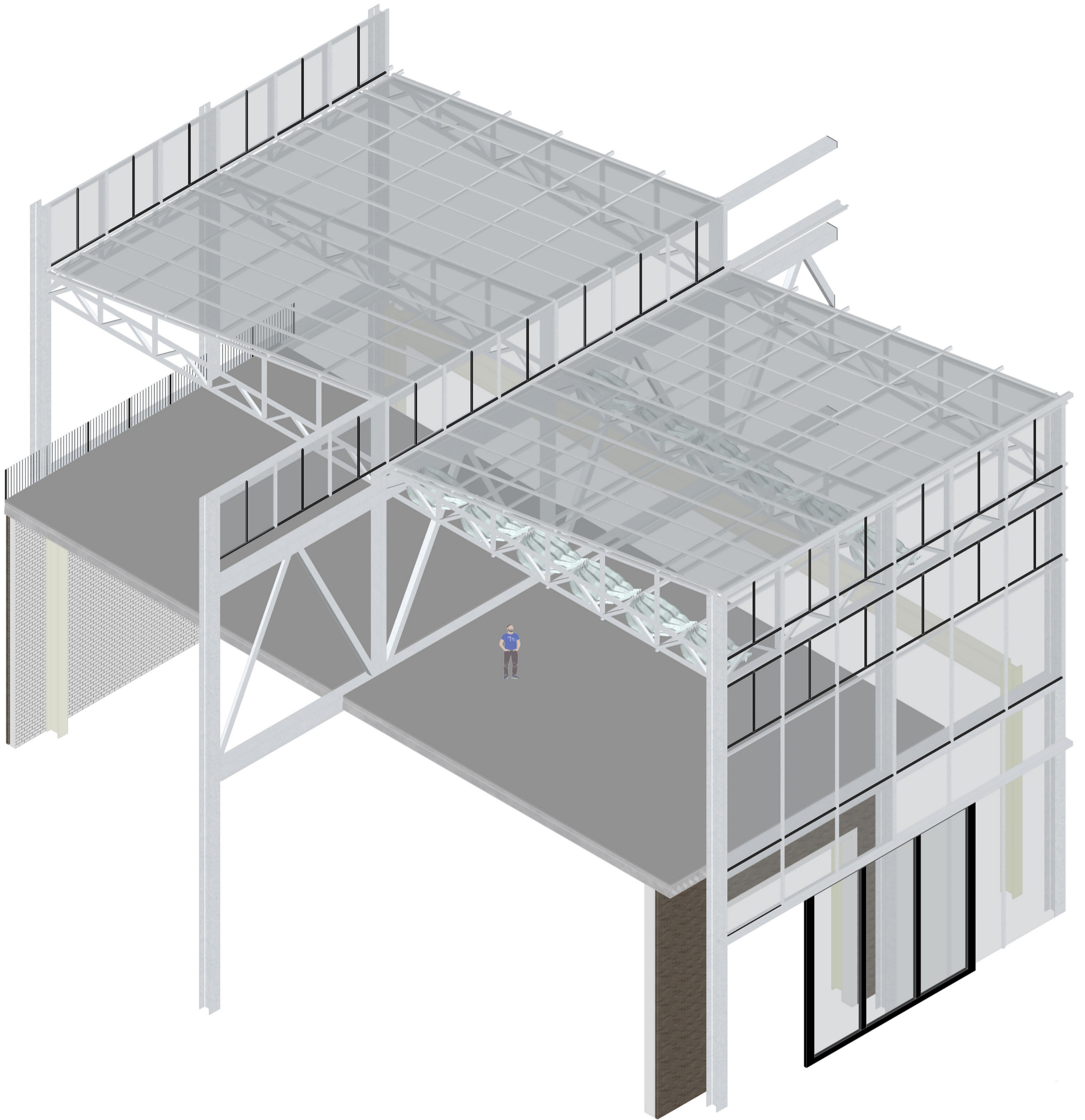
Principe



Principe

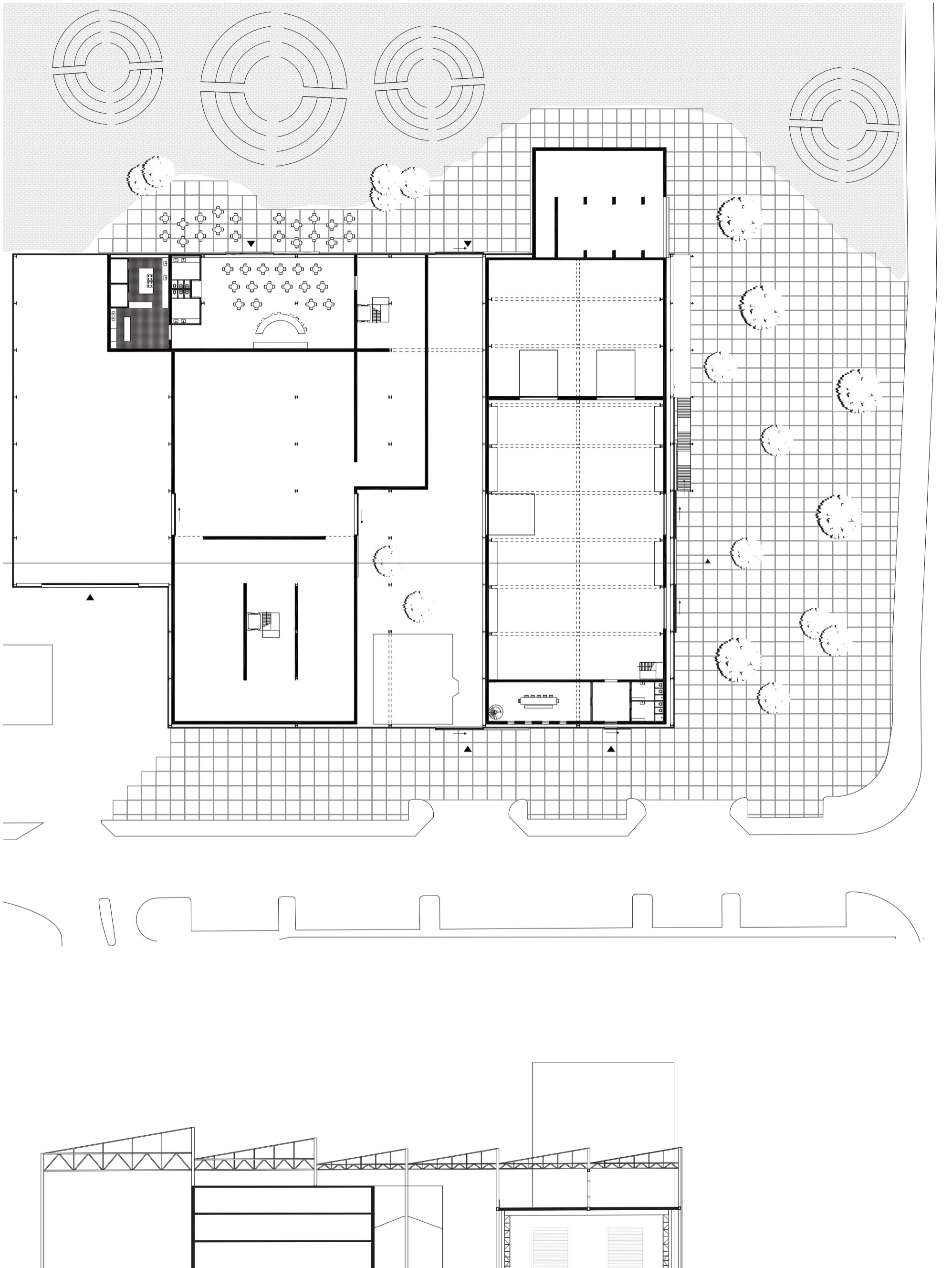


Overzicht

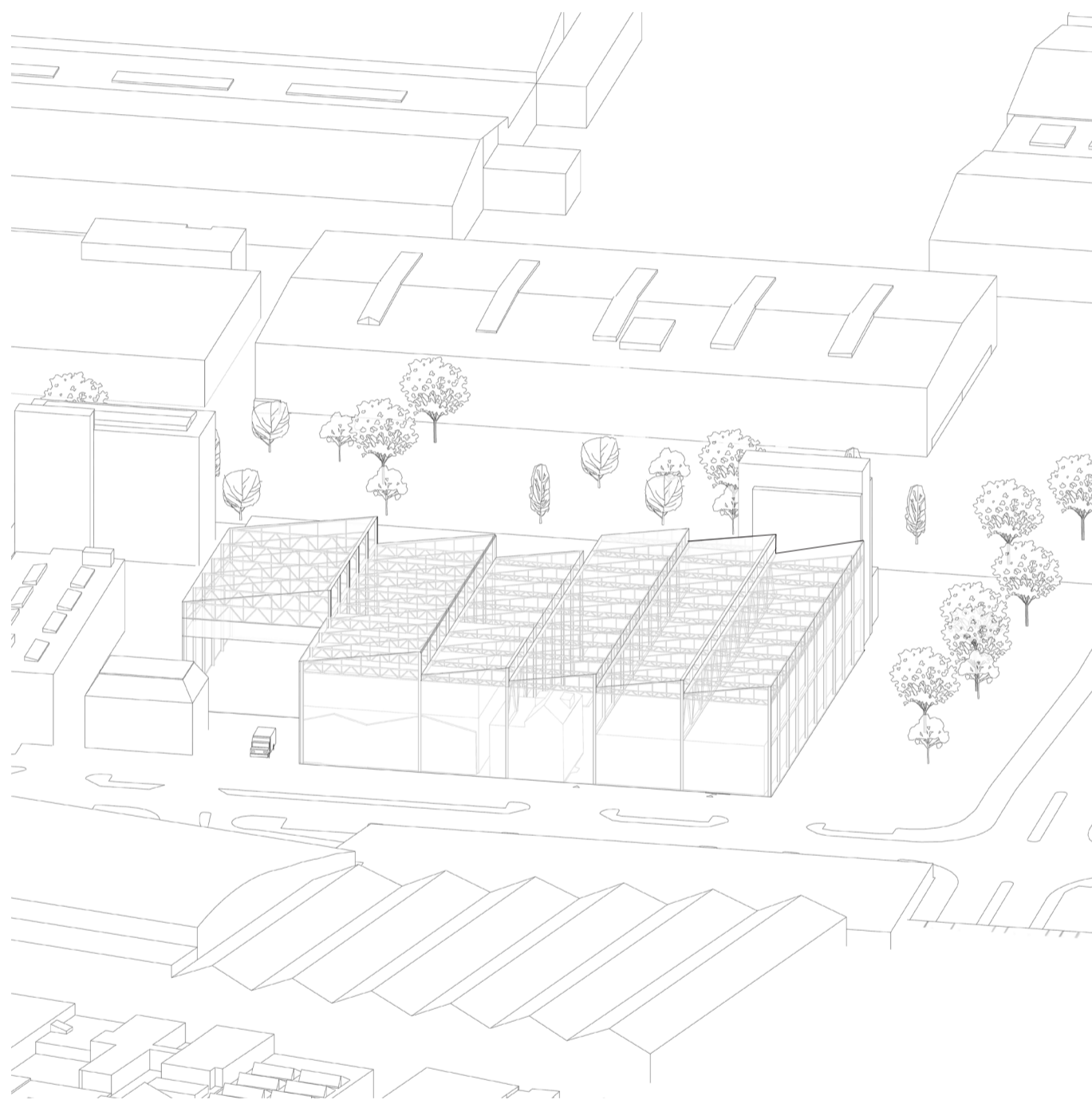


Uitsnede werkplaats AVL

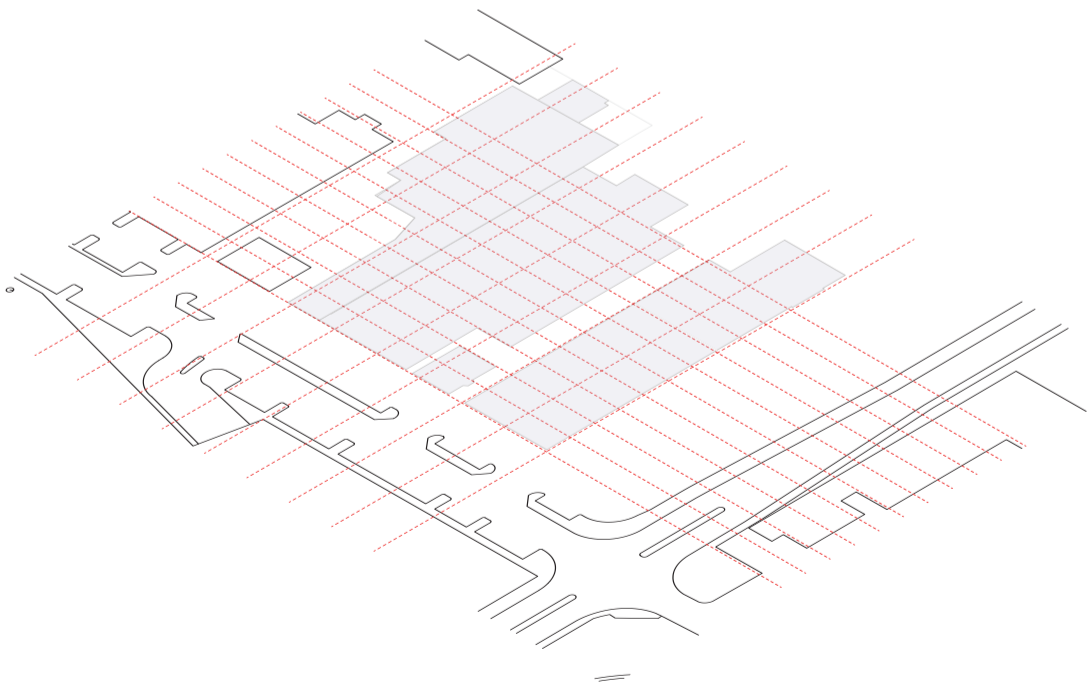
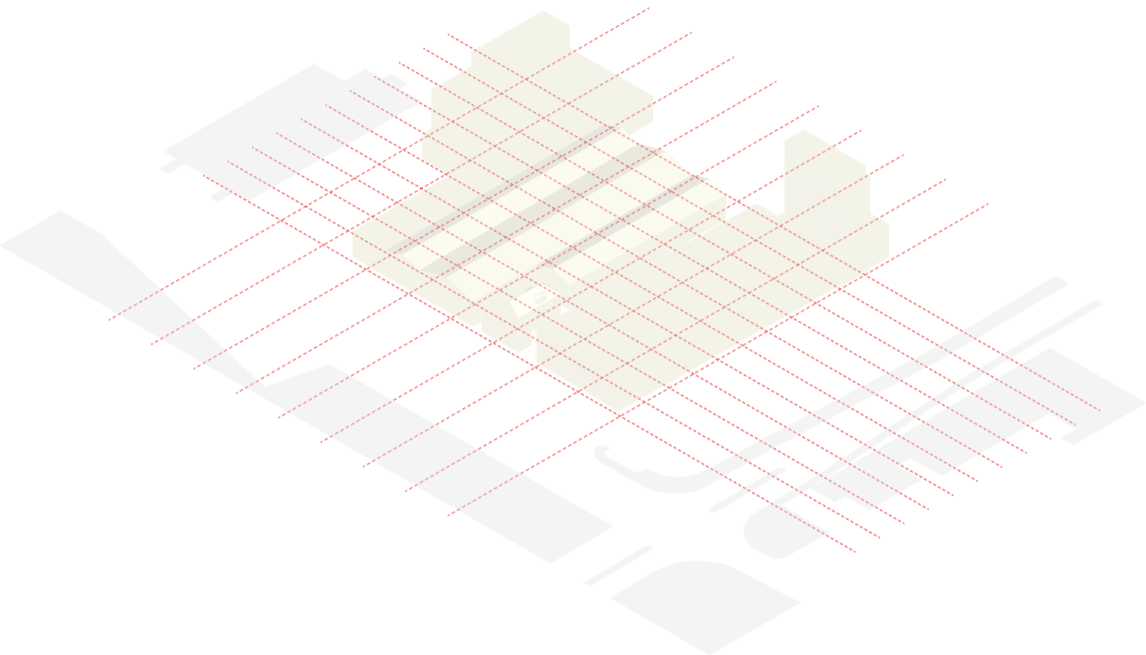
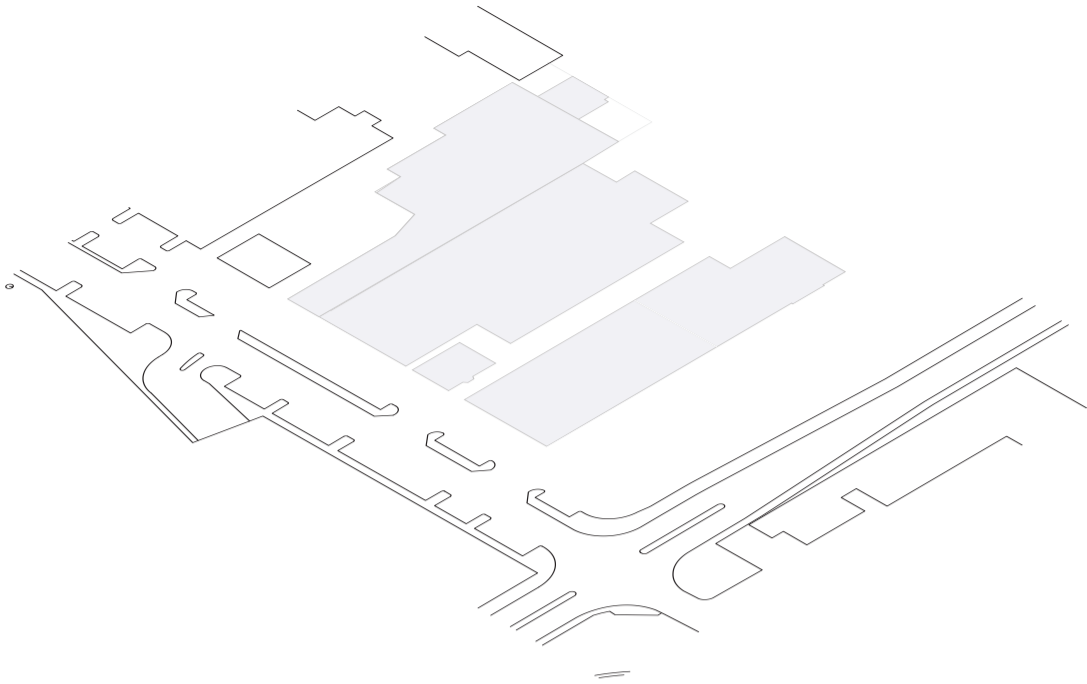
Overzicht



Overzicht

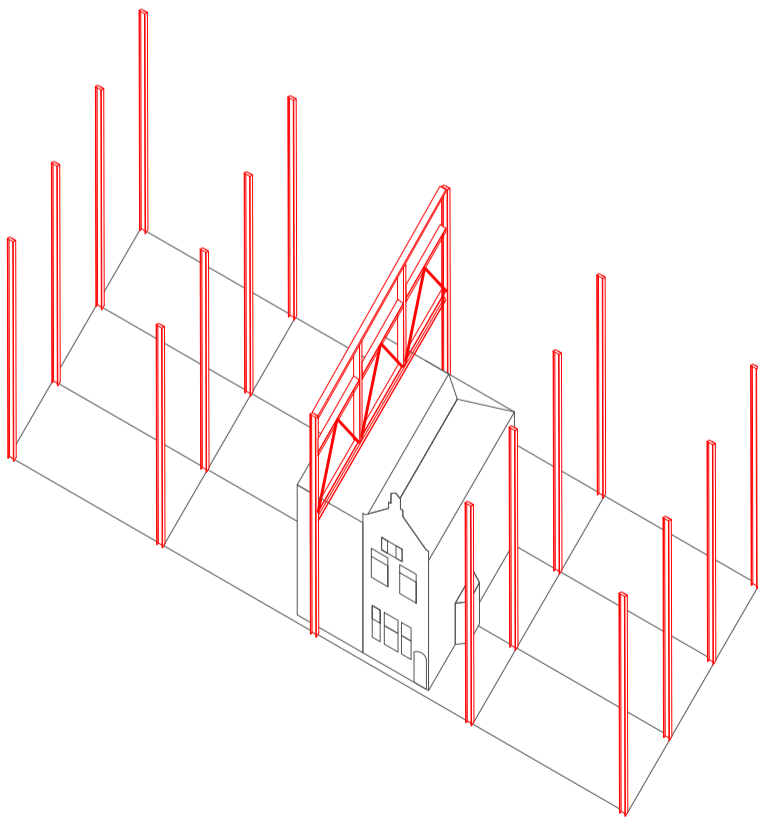
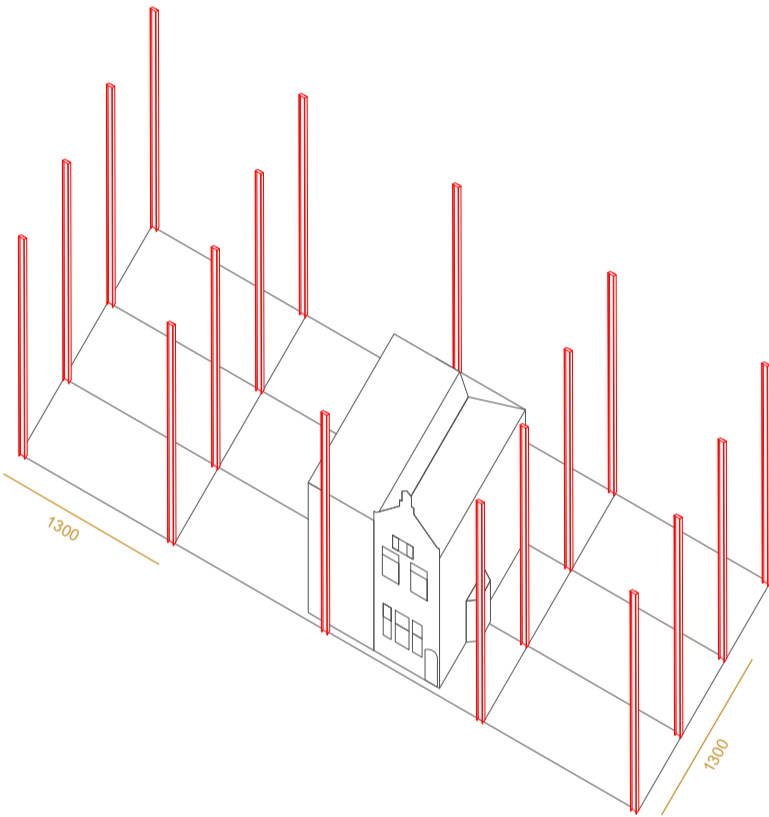
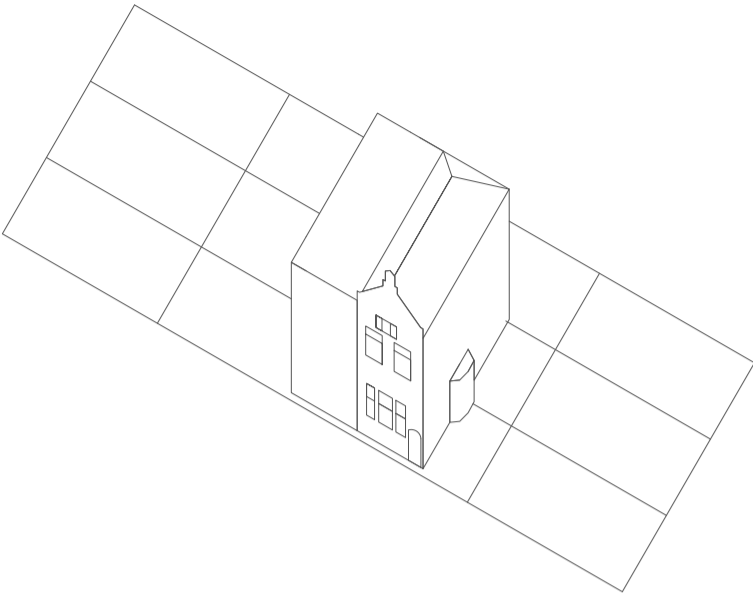


Observatie



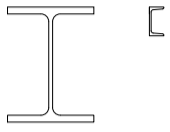
structuur

Observatie

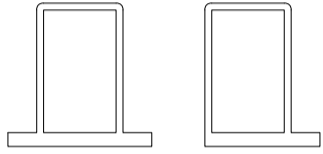


structuur

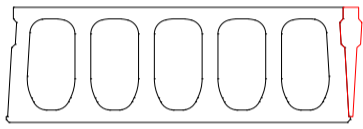
Observatie



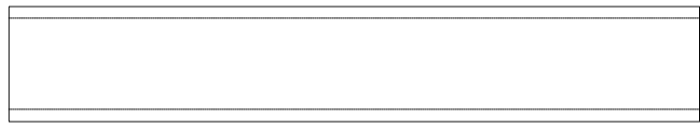
HEB 400 kolommen, UNP 100 secundaire gevelconstructie



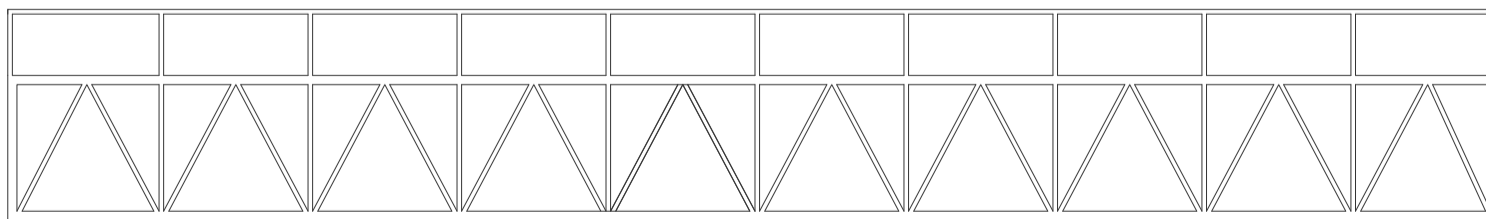
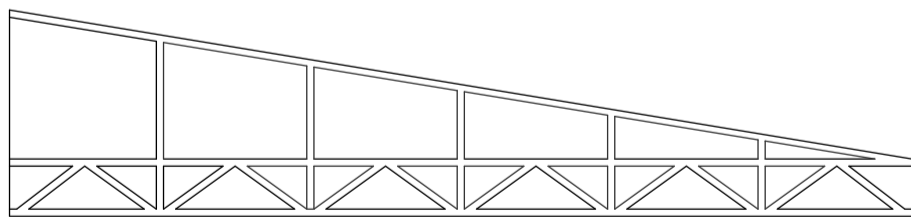
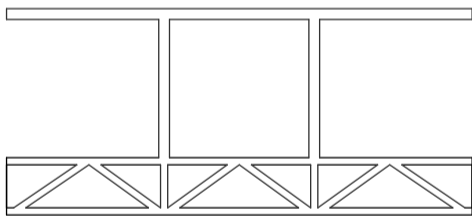
thq Liggers voor het dragen van de kanaalplaatvloeren



Kanaalplaatvloeren 400 - overspanning tot 18 meter

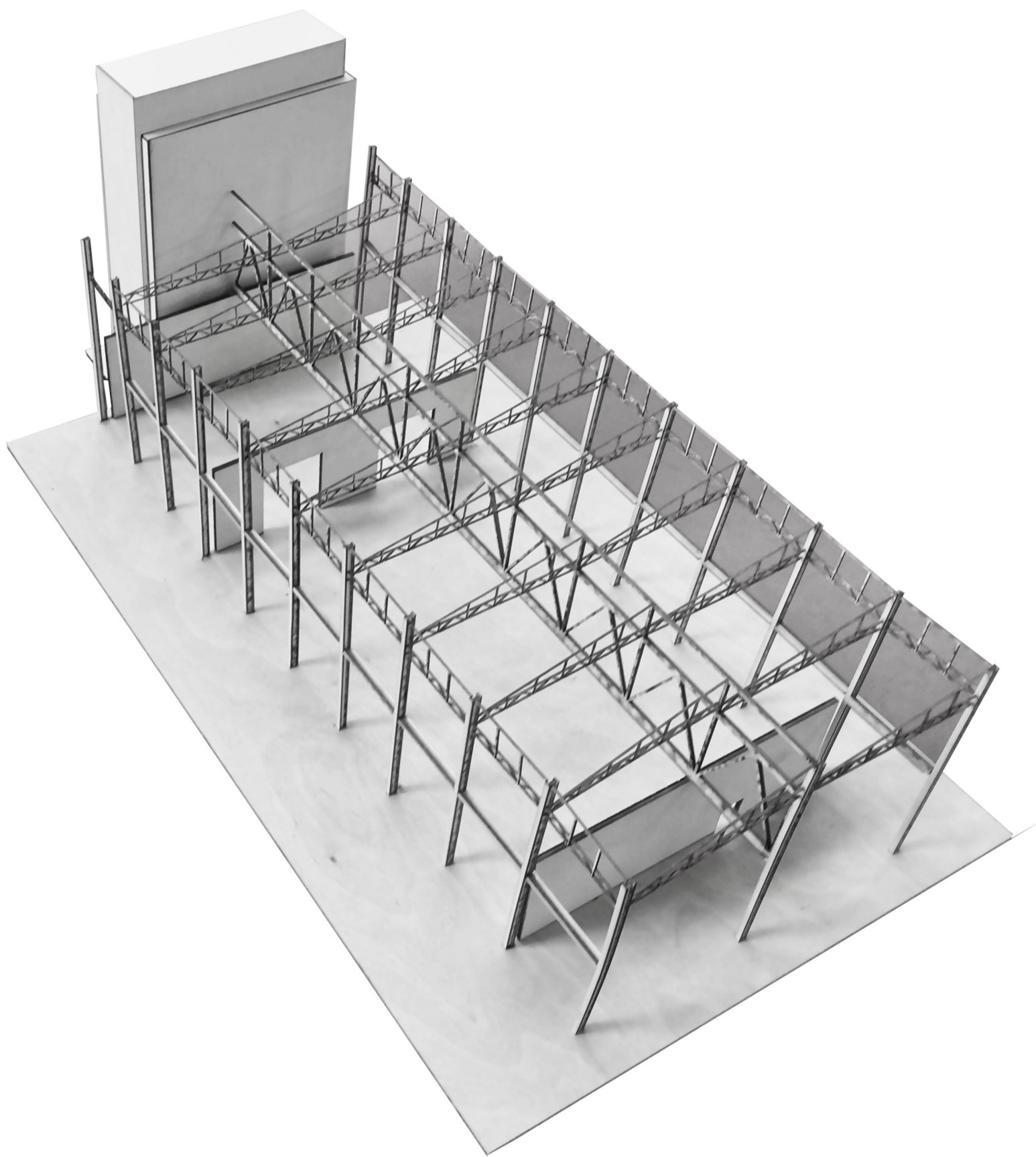


Vakwer toegepast



structuur

Observatie



structuur