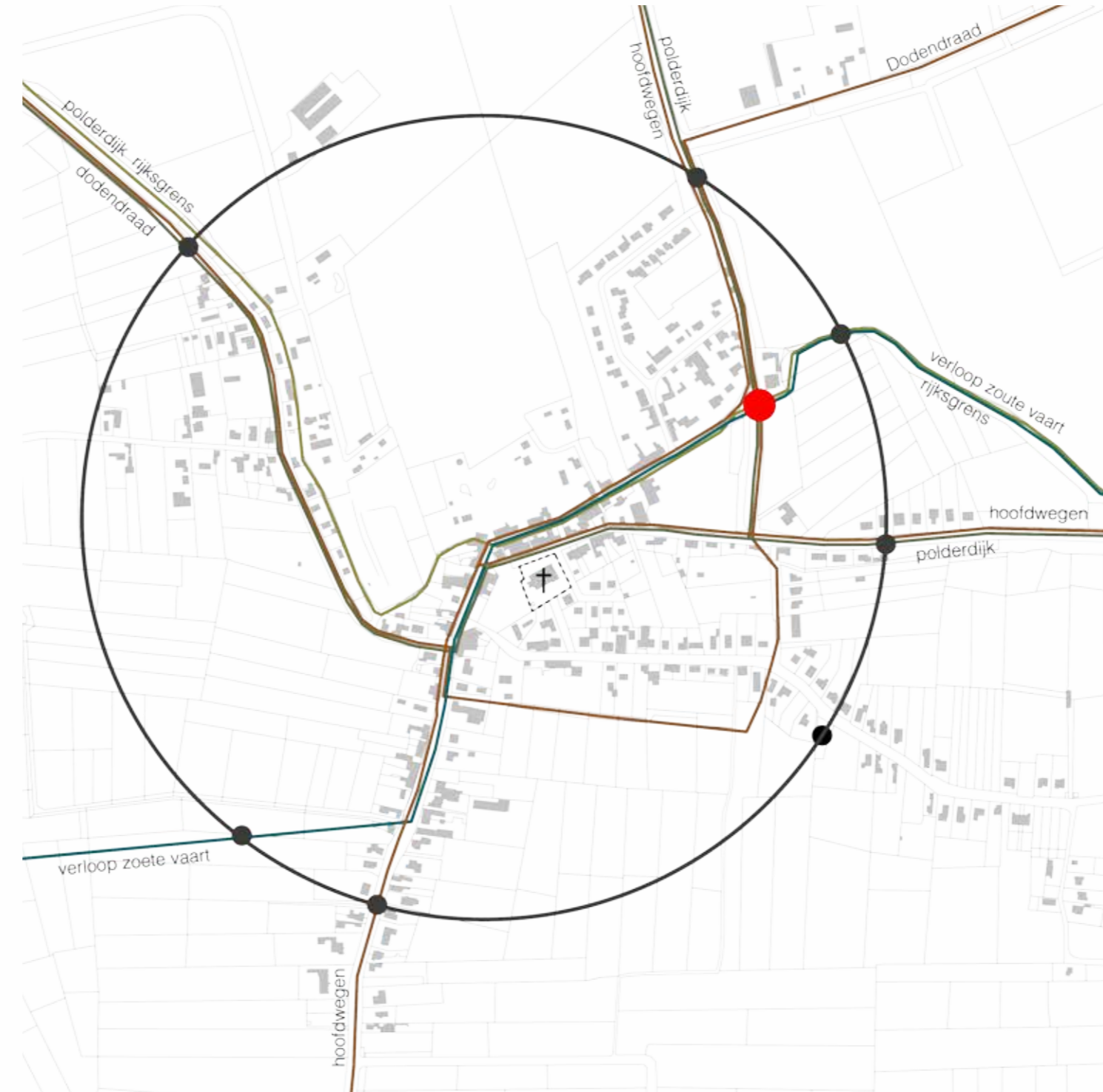
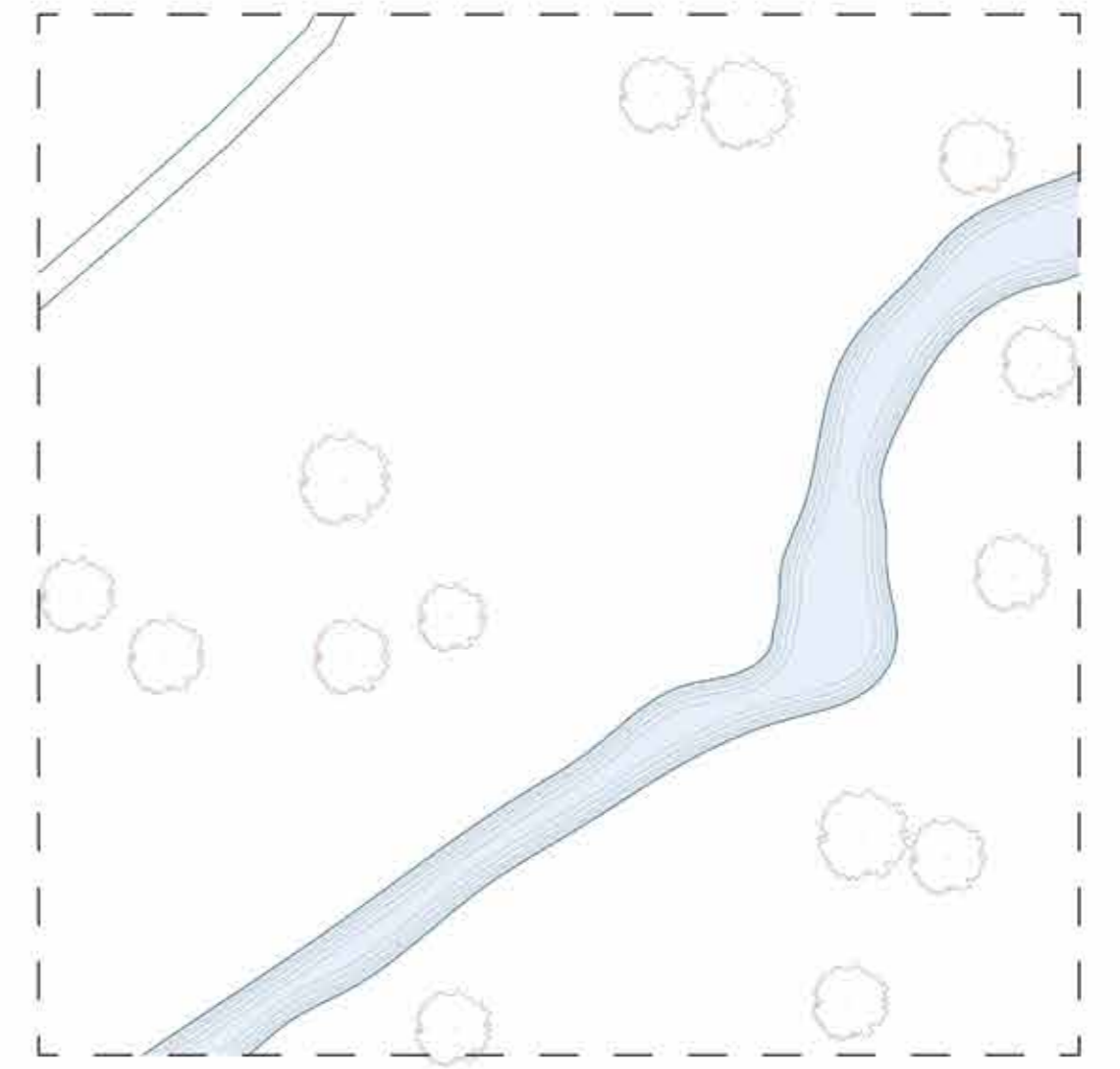


# Palimpsest of Overslag

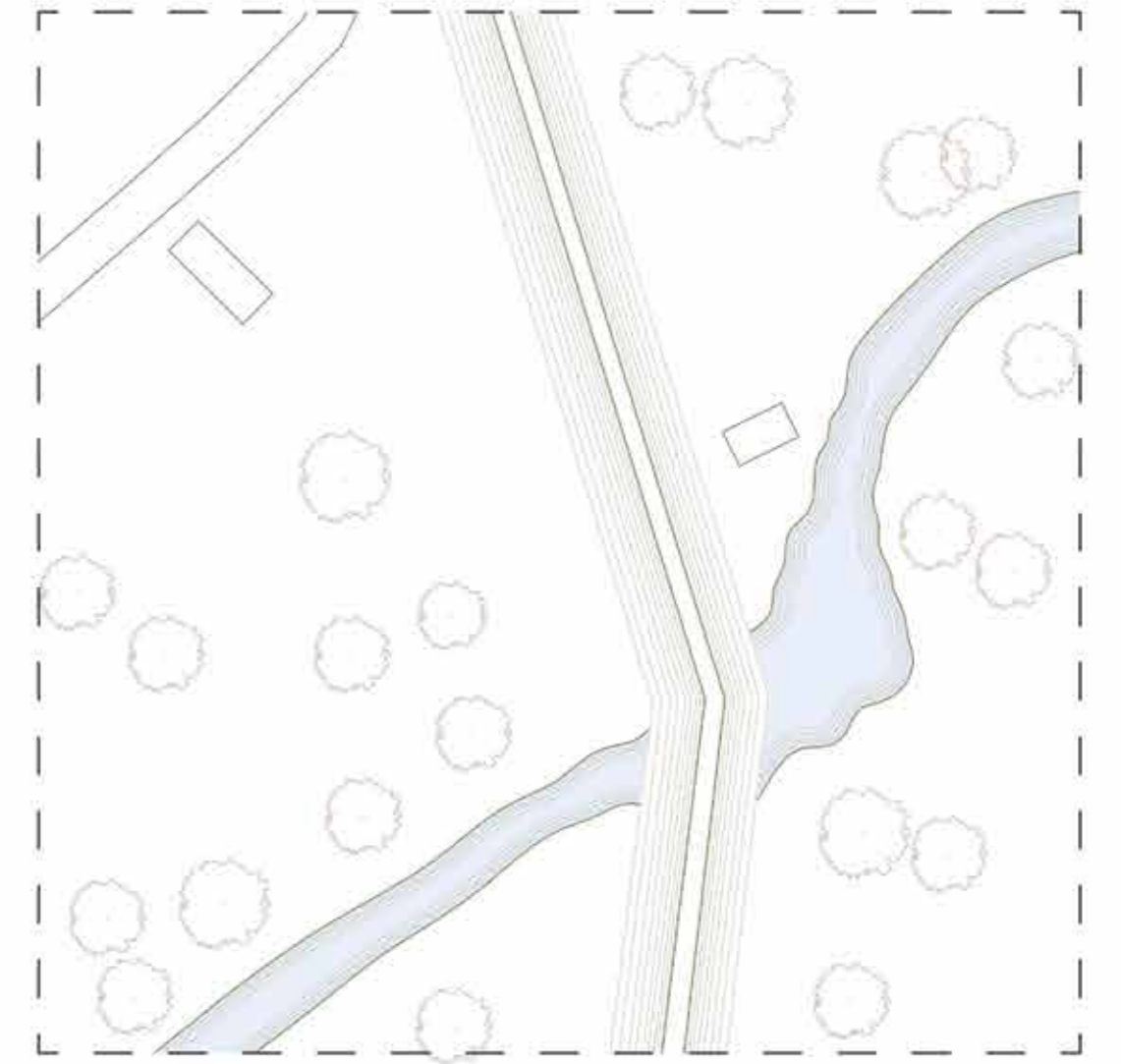
Roy van den Brand



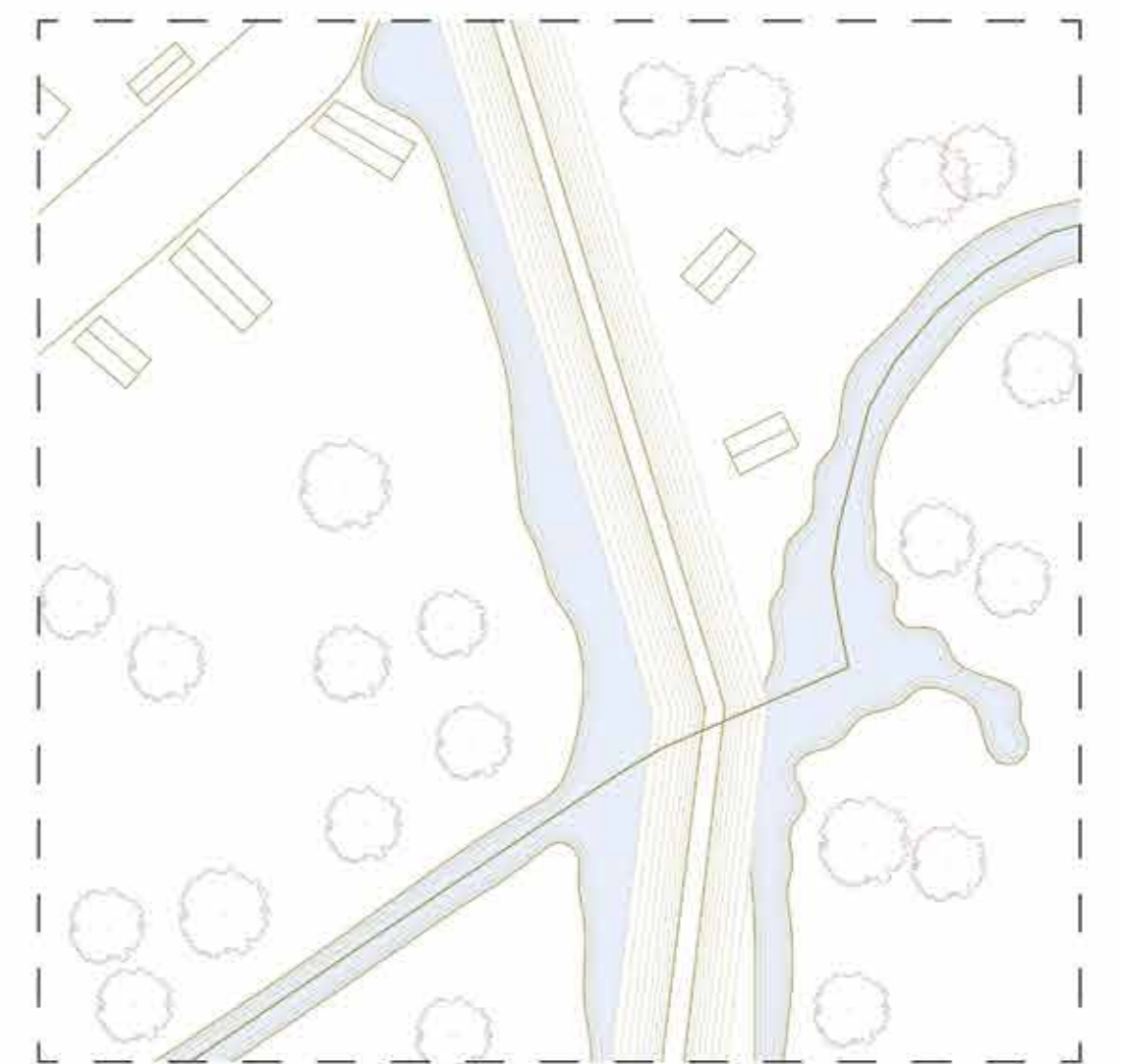
Situatie Overslag



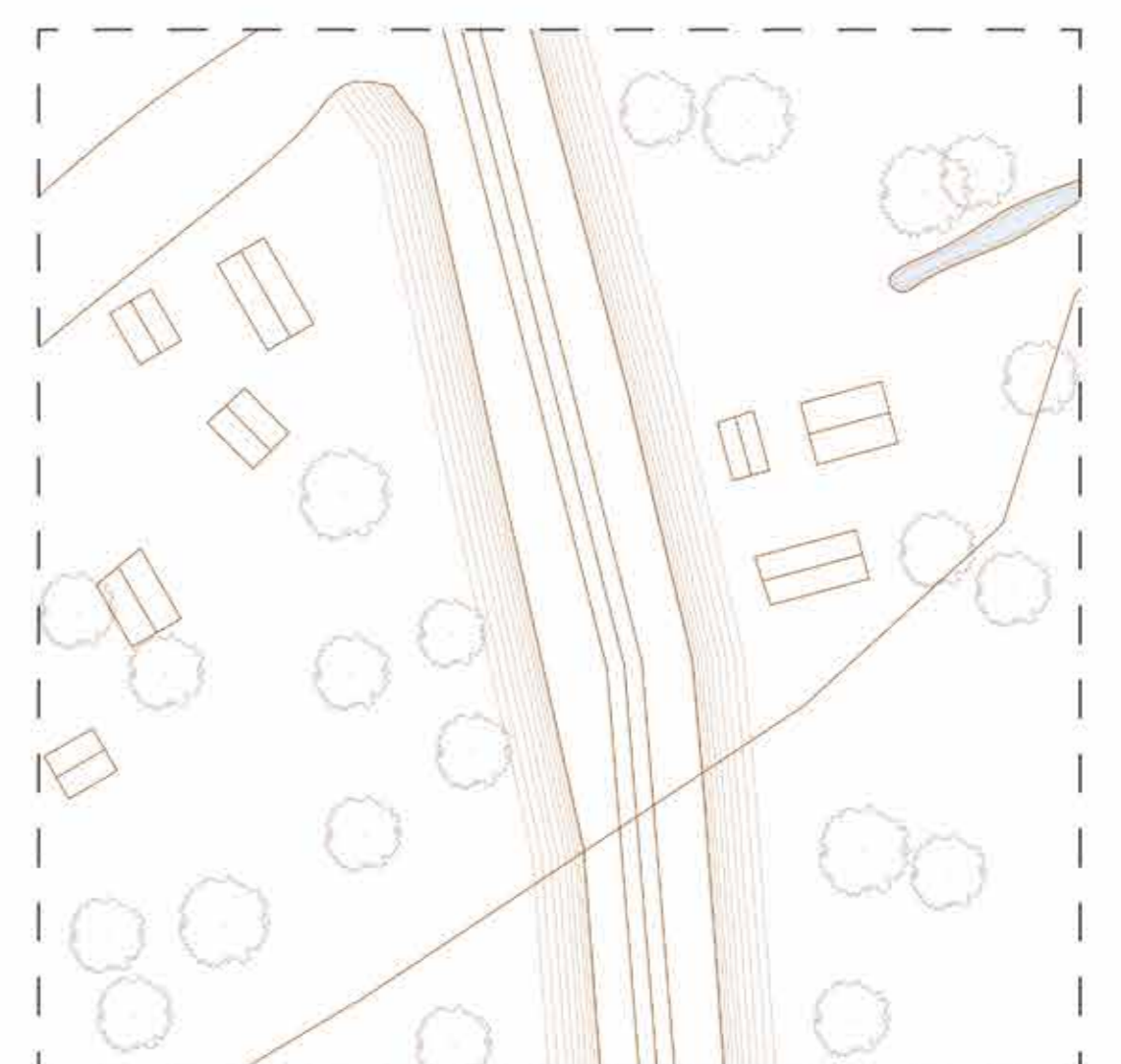
1. Transloading of goods



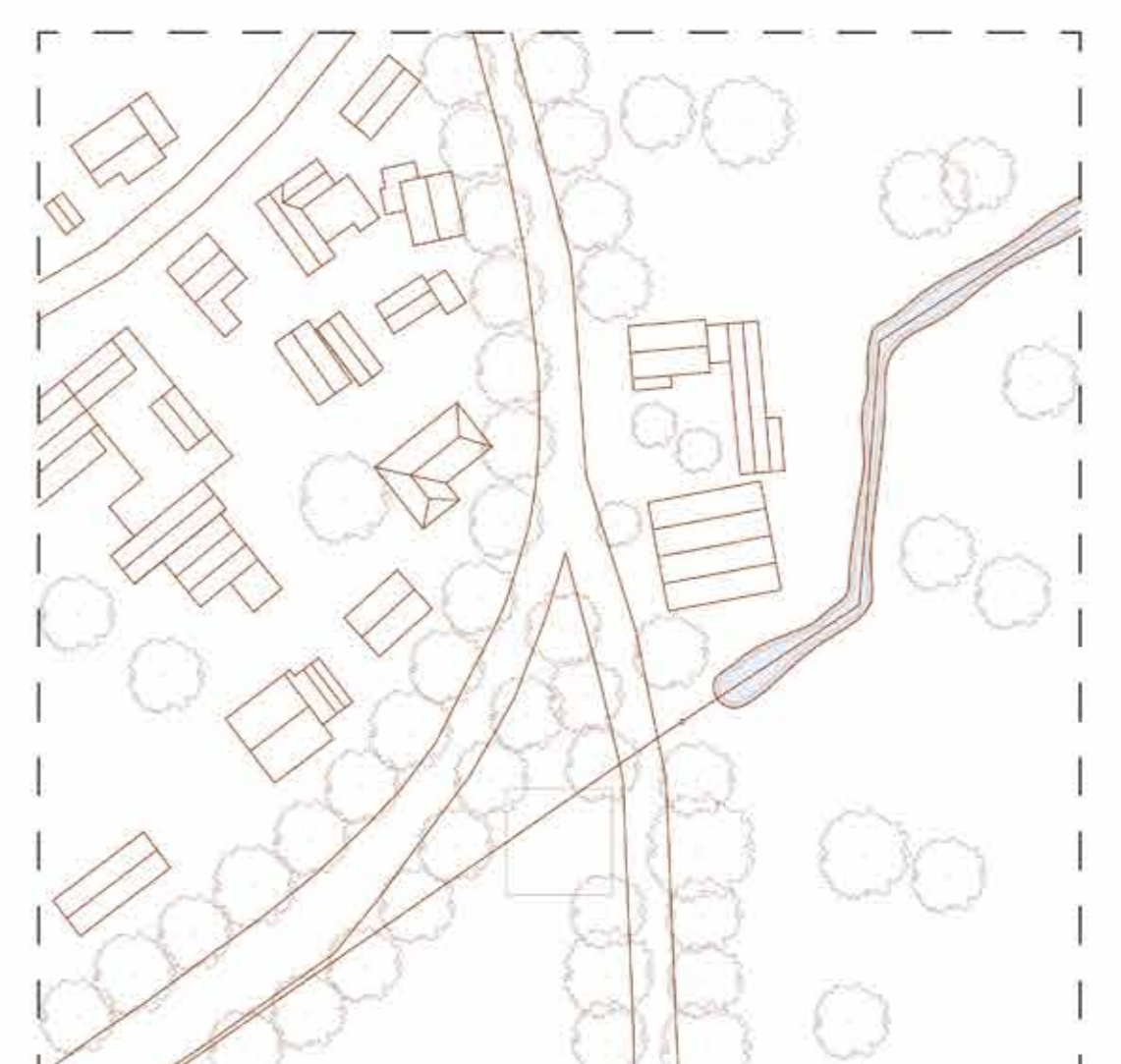
2. Dutch polder dikes



3. Defining of the border



4. 'Dodendraad' during WWI



5. Functions as one village



6. Historical analysis

## 1. Transloading of goods

Overslag is in his origin already inextricably linked to borders. The village even lends its origin to it. It's a dammed river were this village is made. Because of the dammed river the goods that they transported from Terneuzen to Gent needed to be transloaded. Overslag is located on the border between high and low water, the border between sweet and salt water and the border that the land defended against the sea.

## 2. Dutch polder dikes

After the Sassevaart was finished in **1547** the route from Terneuzen to Overslag become less and less popular. By this the economic of Overslag slowly disappeared. A defence system was coming up in the form of dikes. The dikes of the Overslagpolder also crossed through Overslag. These were part of the Canisvliet and Moerspuipolders in the Netherlands.

## 3. Defining of the border

The definitive border between in that time The Republic and the Austrian Netherlands was decided with the signing of 'The Peace of Münster' in **1648**. This after the long Eighty Years' War. For the Republic it was very important to have Zeeuw-Vlaanderen because in this way they also controlled the what we call know the Schelde.

## 4. 'Dodendraad' during WWI

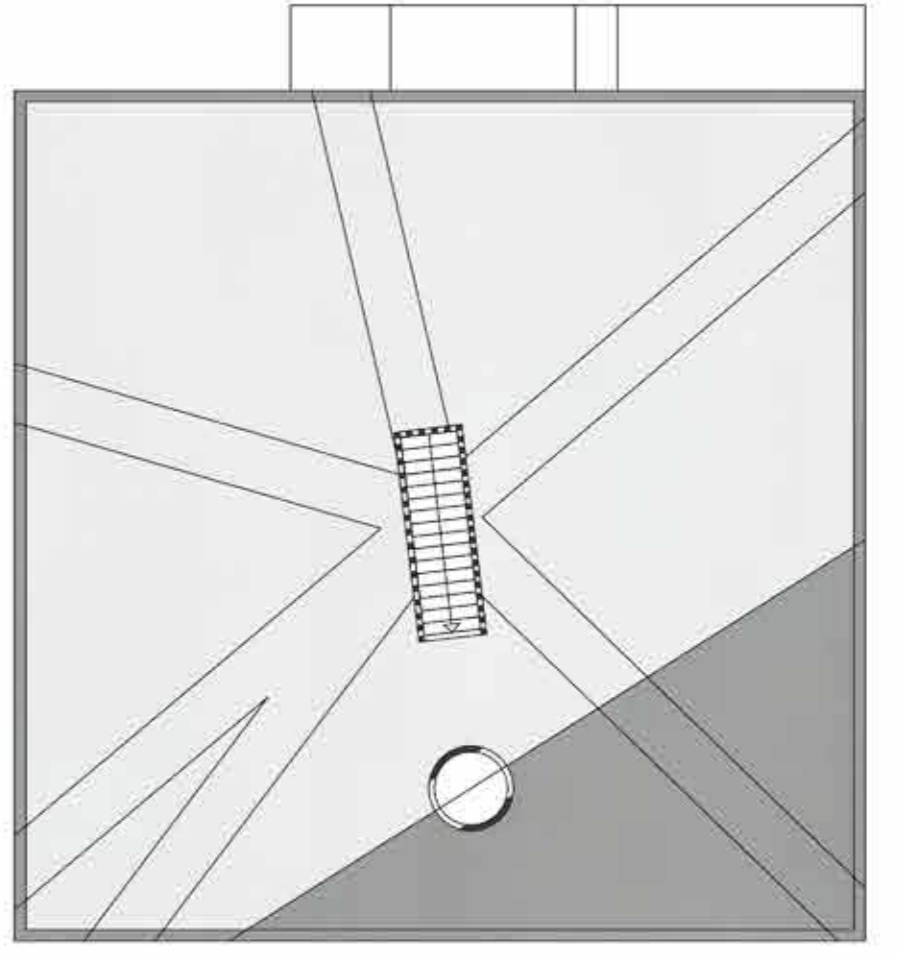
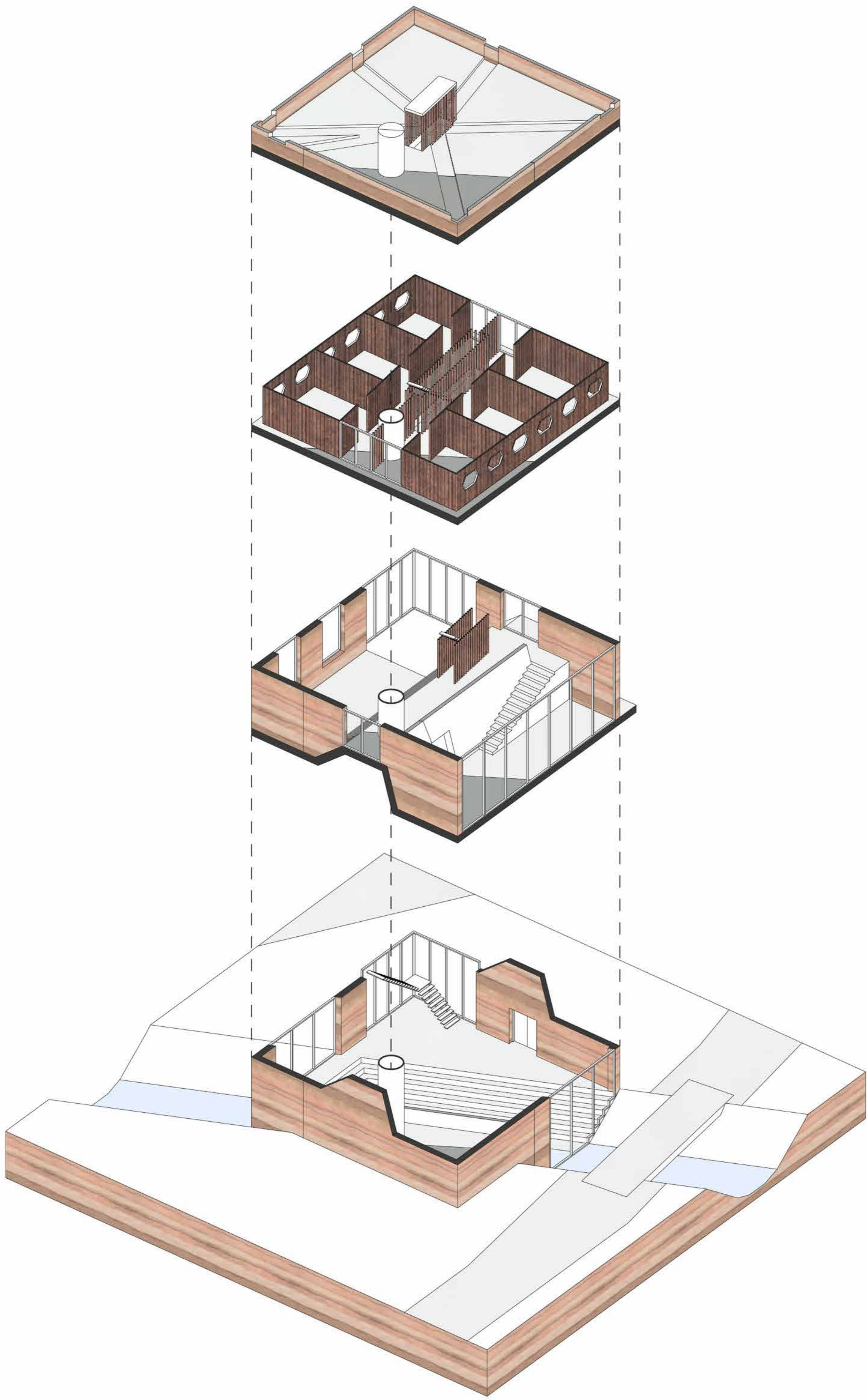
Germany wanted to close the neutral Netherlands off during The **First World War**. The border was a electric 'Dodendraad'. Original the border has a lot of twists. But Germany wanted the fence quickly what resulted is a less exact interpretation of the border. By doing this they made pieces of "no man's land". People in this areas were trapped between the Dutch border and the death line. This was also the case in Overslag.

## 5. Functions as one village

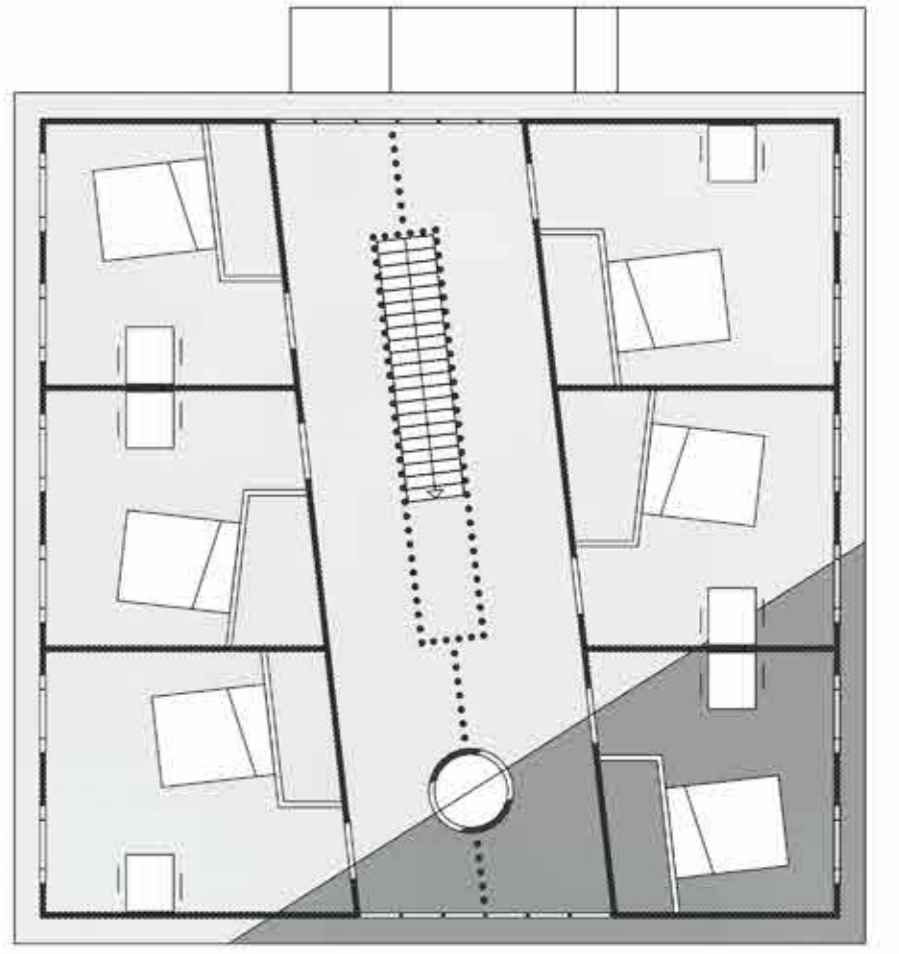
Despite everything, it looks like a quiet little border village that you can drive through in an wink. A village where **nowadays** only a lost border pole directly refers to the border between the Netherlands and Belgium. Overslag functions as one village. This way, facilities are shared and they celebrate each other's holidays.

## 6. Historical analysis

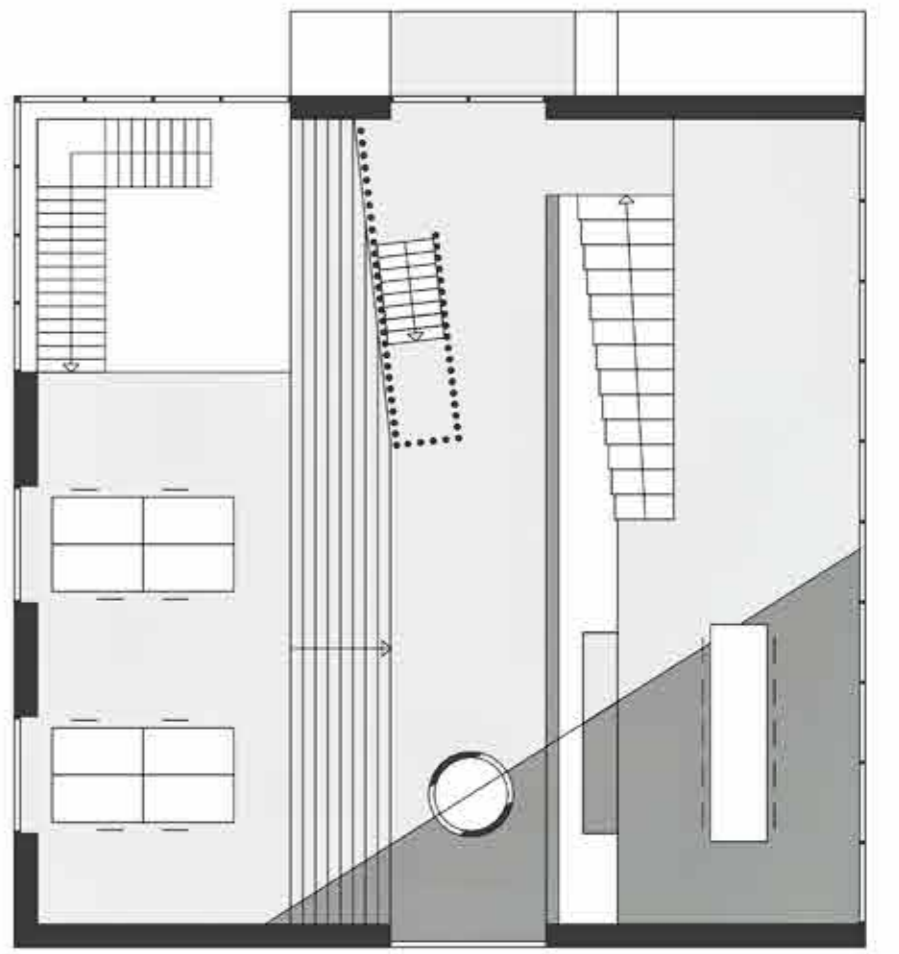
In Overslag is one place where all historical boundaries cross (marked with a red button in the situation). A place that is therefore marked by history. Much of this history has not, or hardly, been visible over the years. By overlaying the times you see the palimpsest of this space.



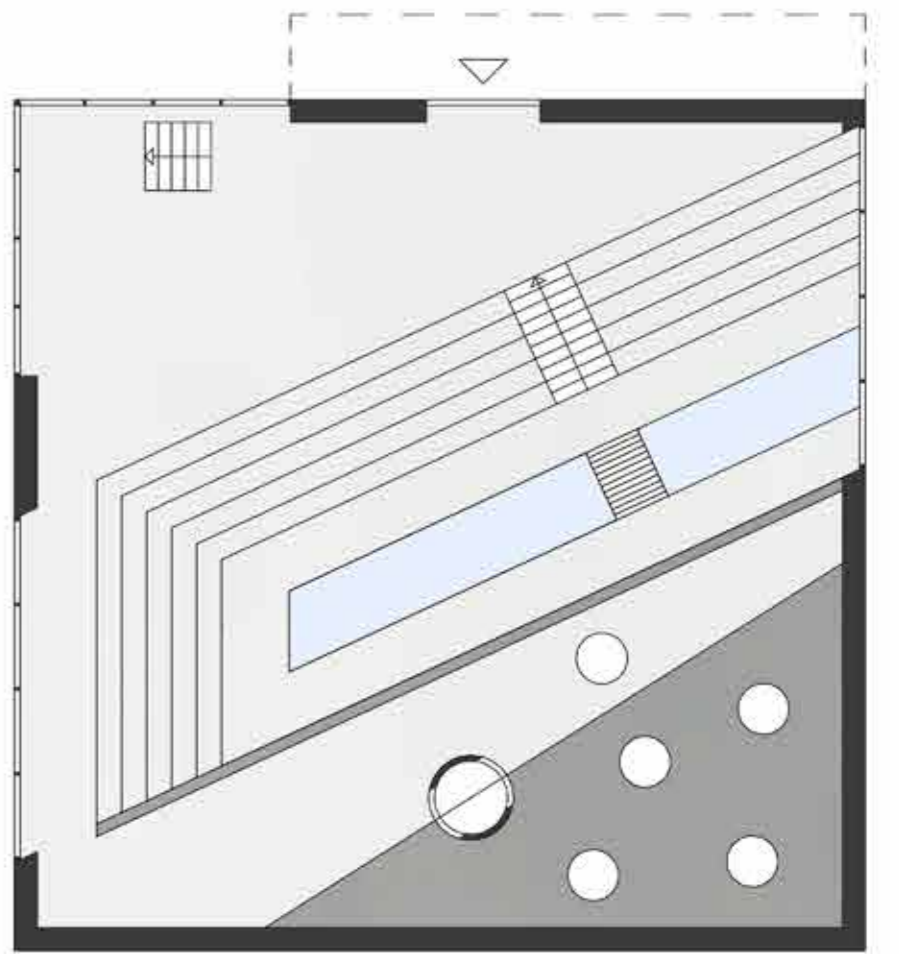
End up at the roof and have a overview of Overstag



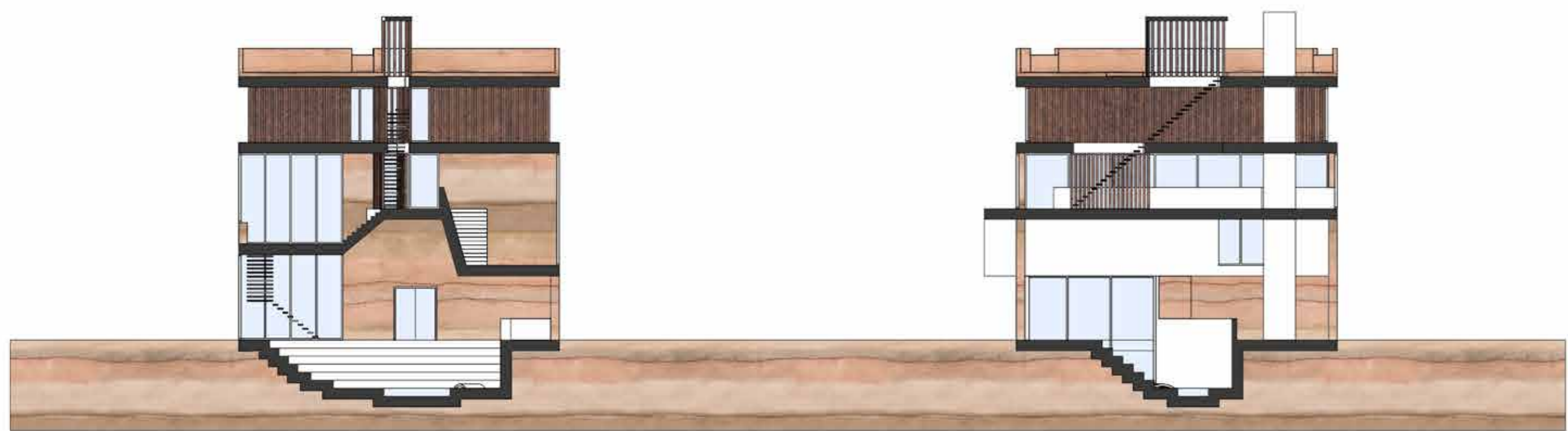
Pass the open but isolated spaces from WWI



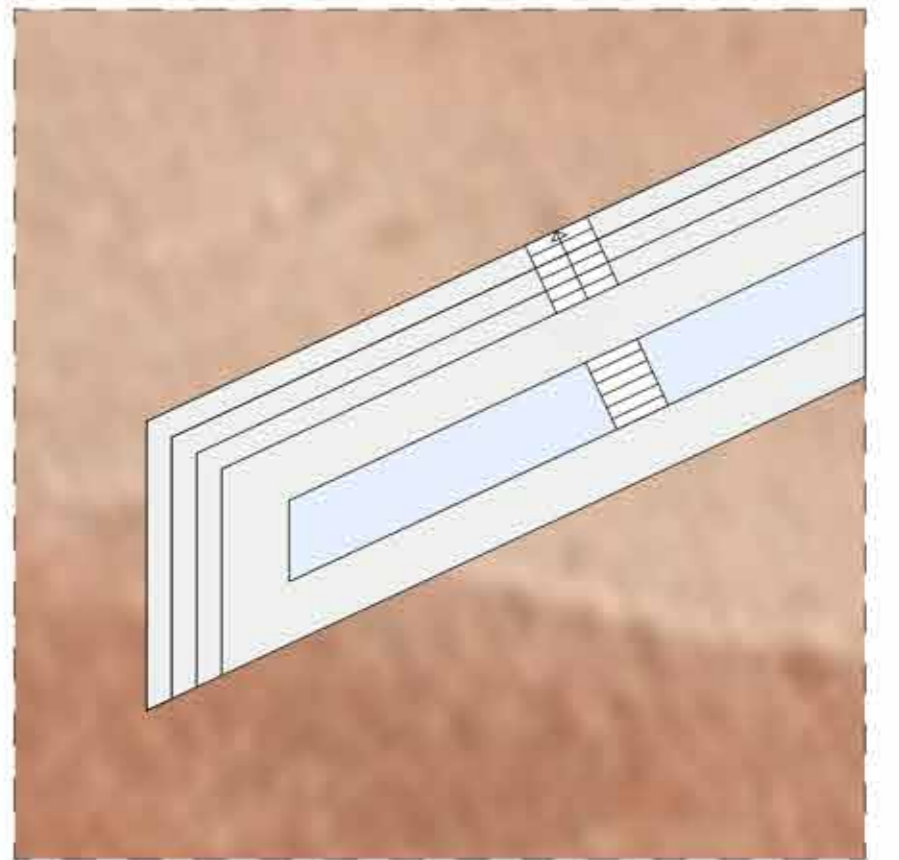
Walk up the dike with a wide open view



Enter the building at the quay of the river



Sections showing a few spatial elements that refer to historcal times at that place.



In the old river an aditorium for knowledge transfer

