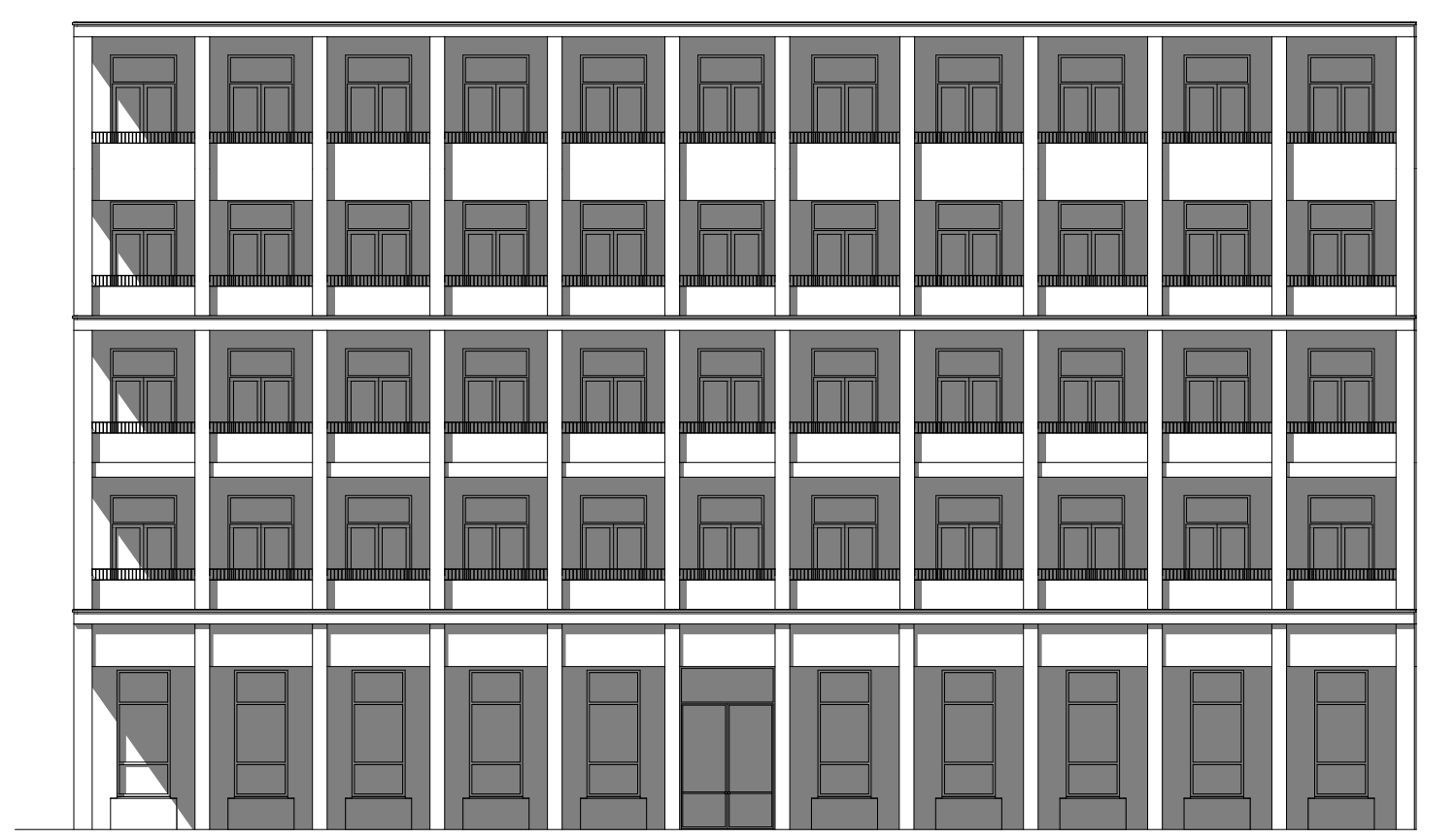
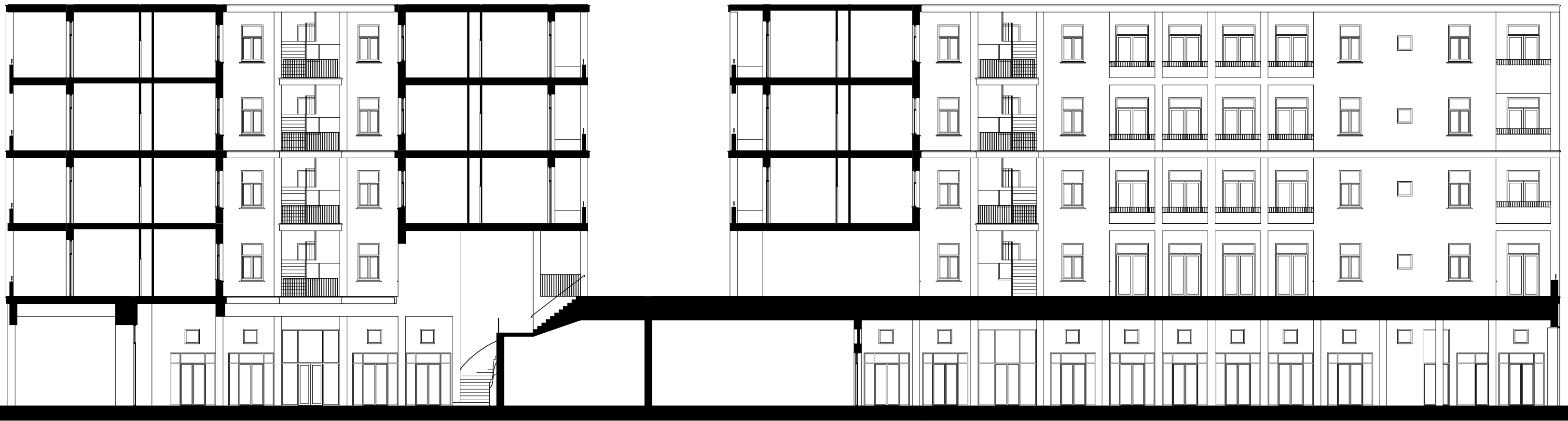




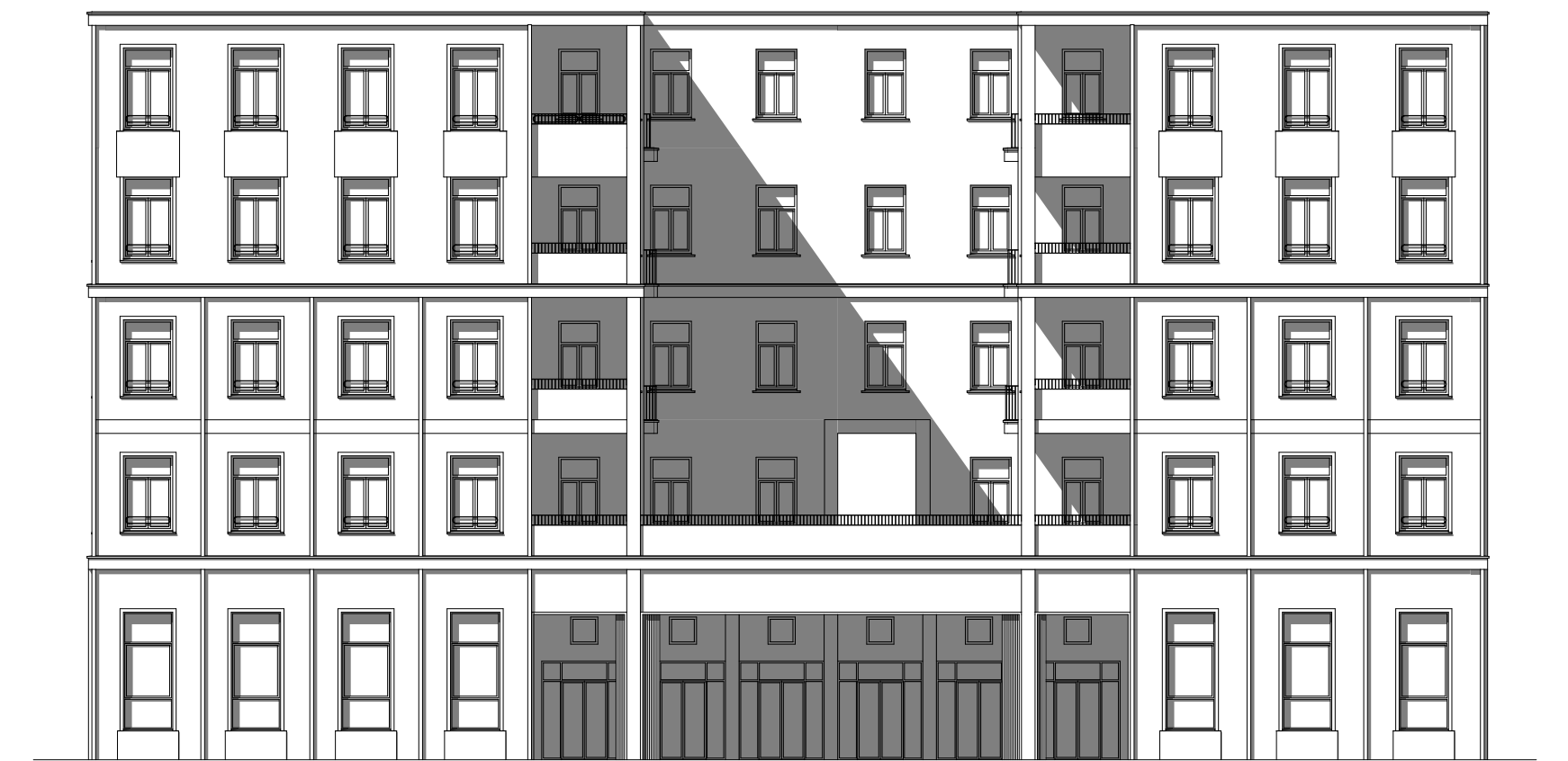
linker zijgevel 1:200



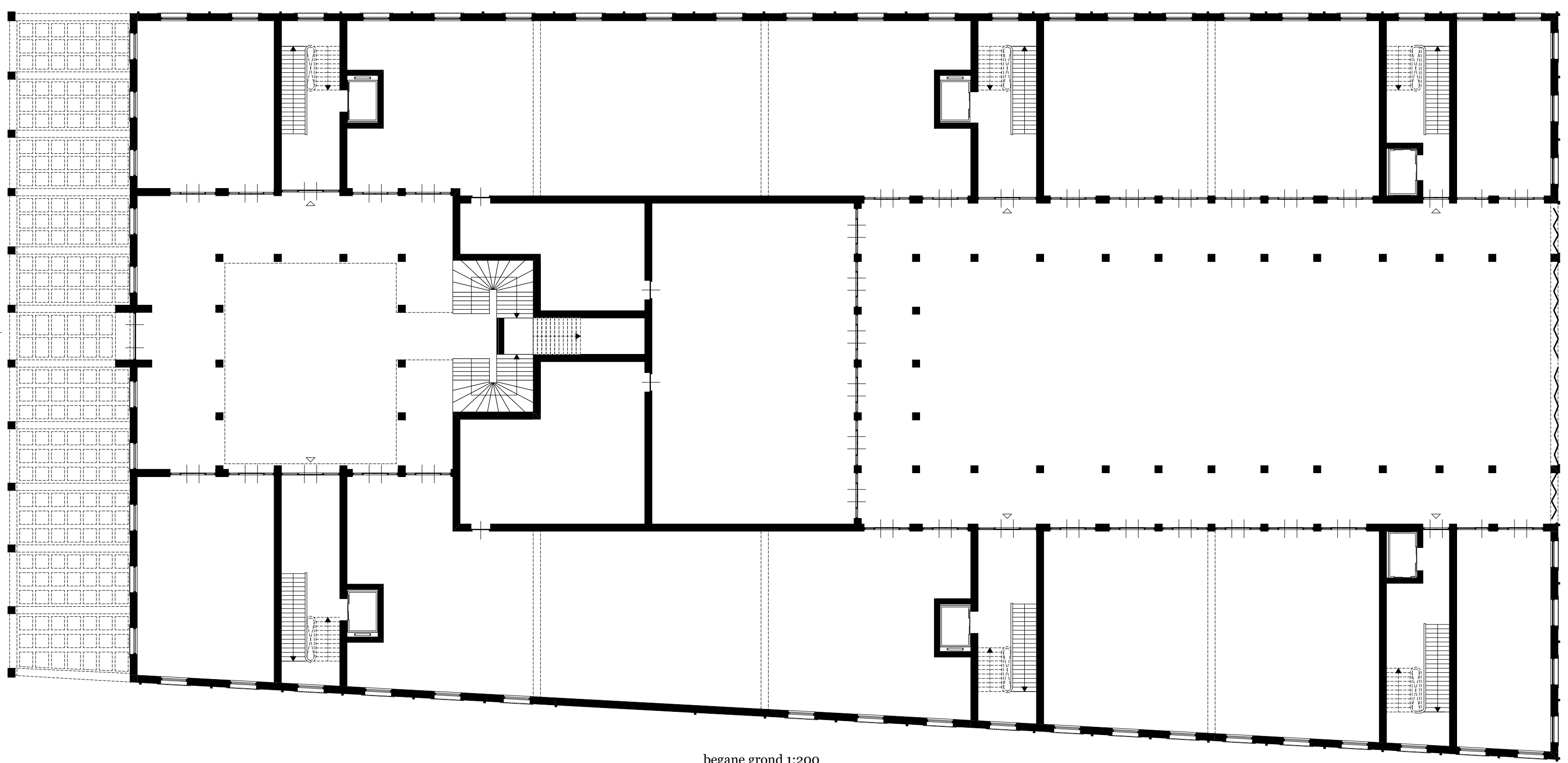
voorgevel 1:200



langsdoorsnede 1:200



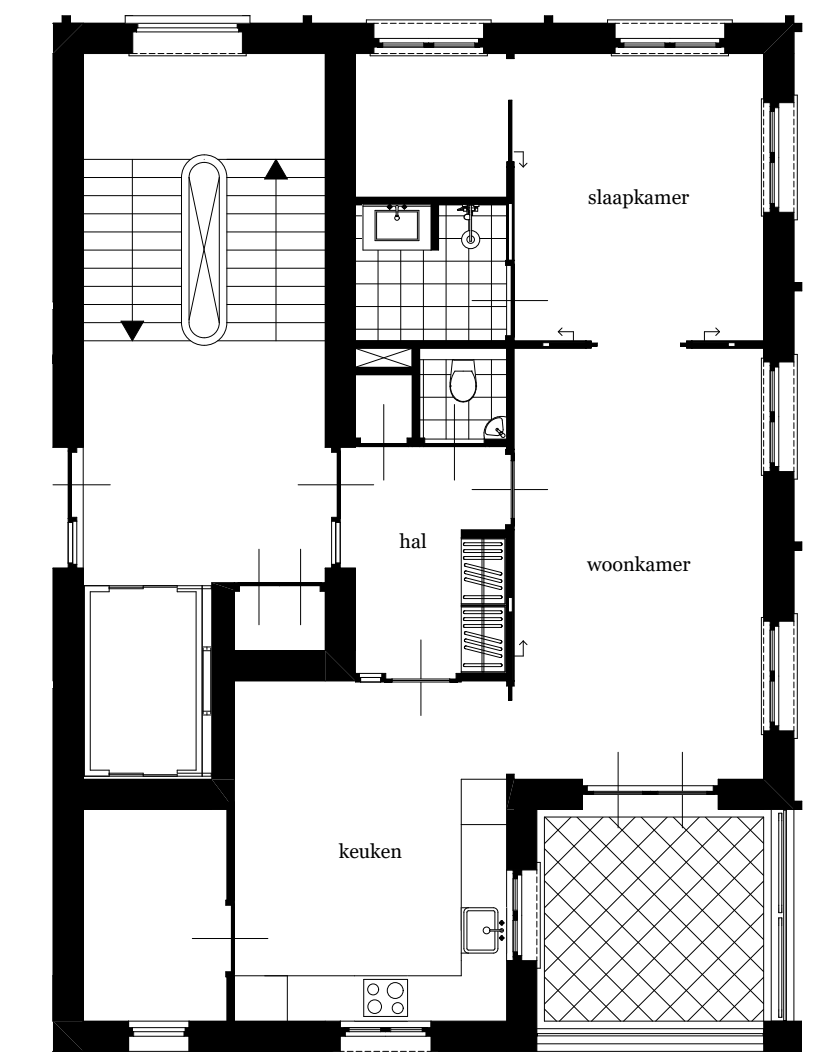
achtergevel 1:200



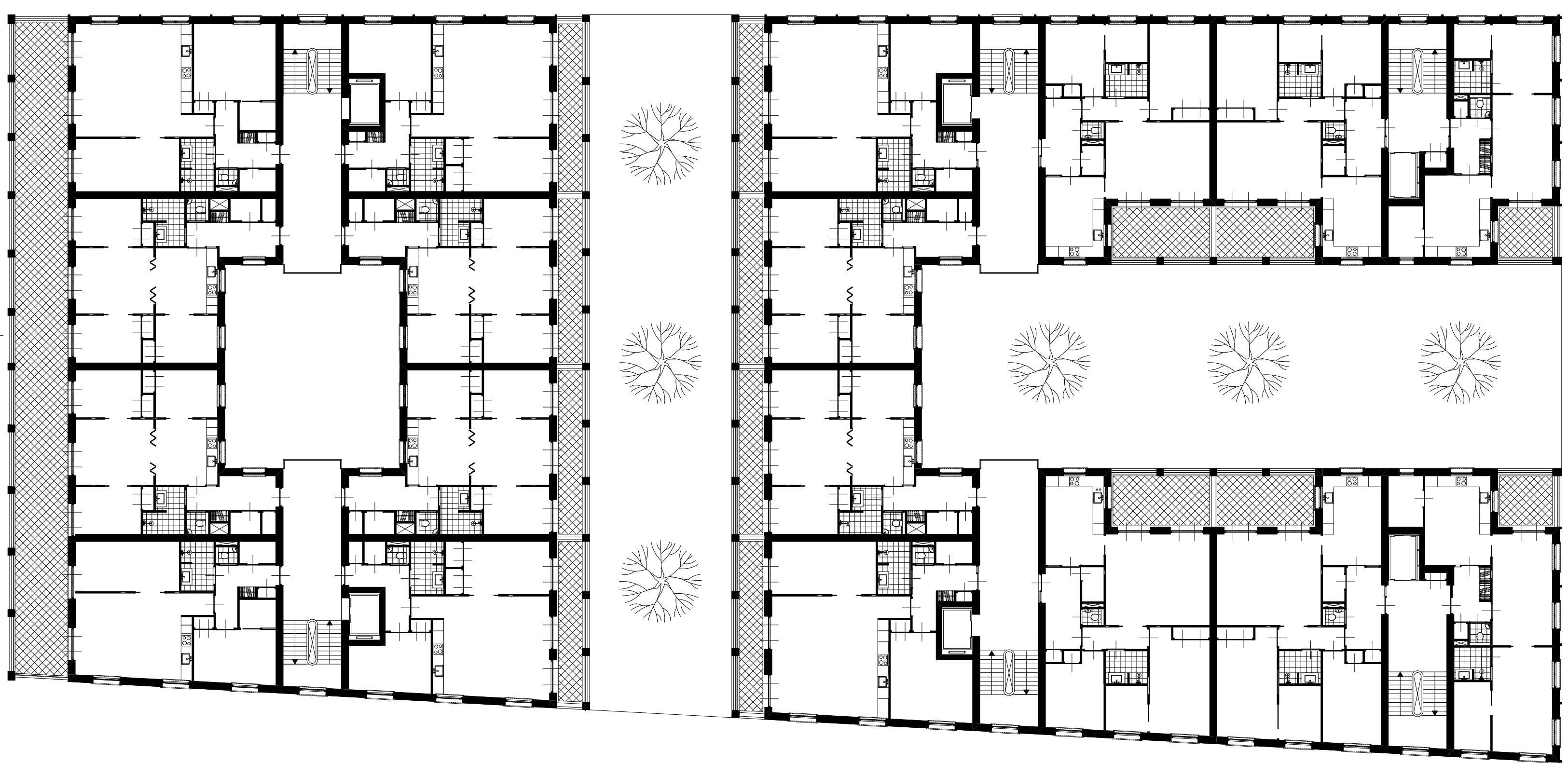
begane grond 1:200



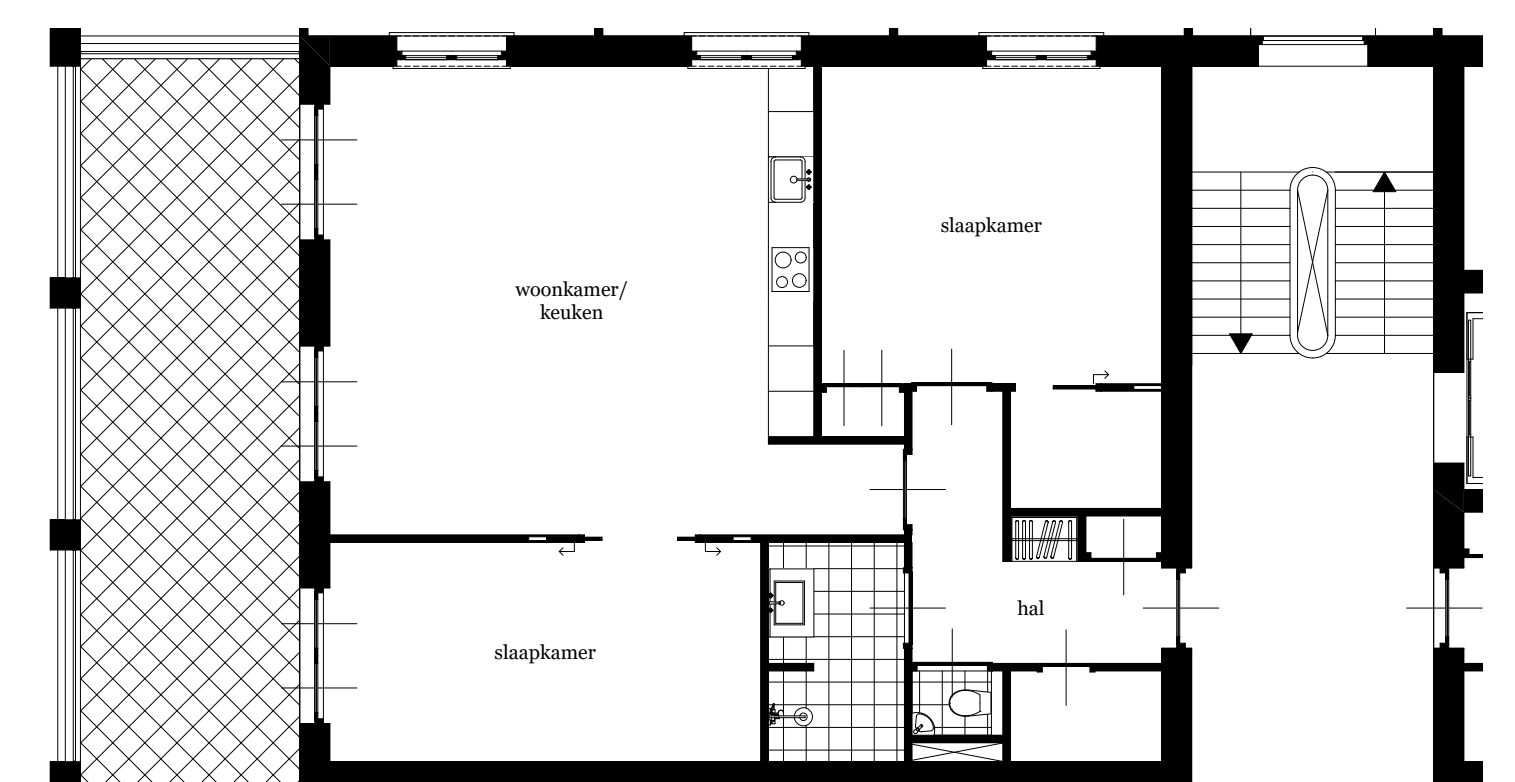
tussenwoning met 2 slaapkamers 1:100



kopwoning met 1 slaapkamer 1:100



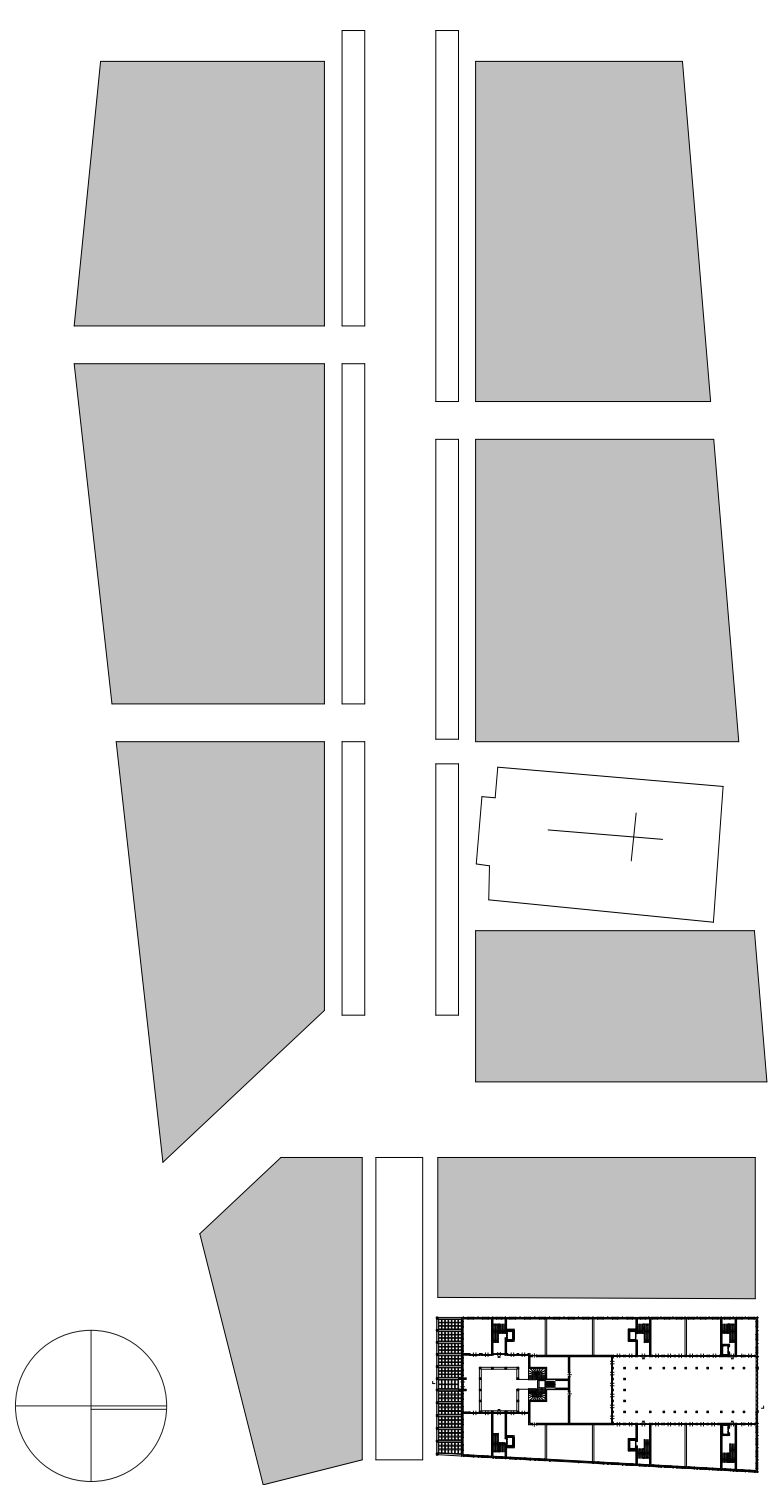
standaard verdieping 1:200



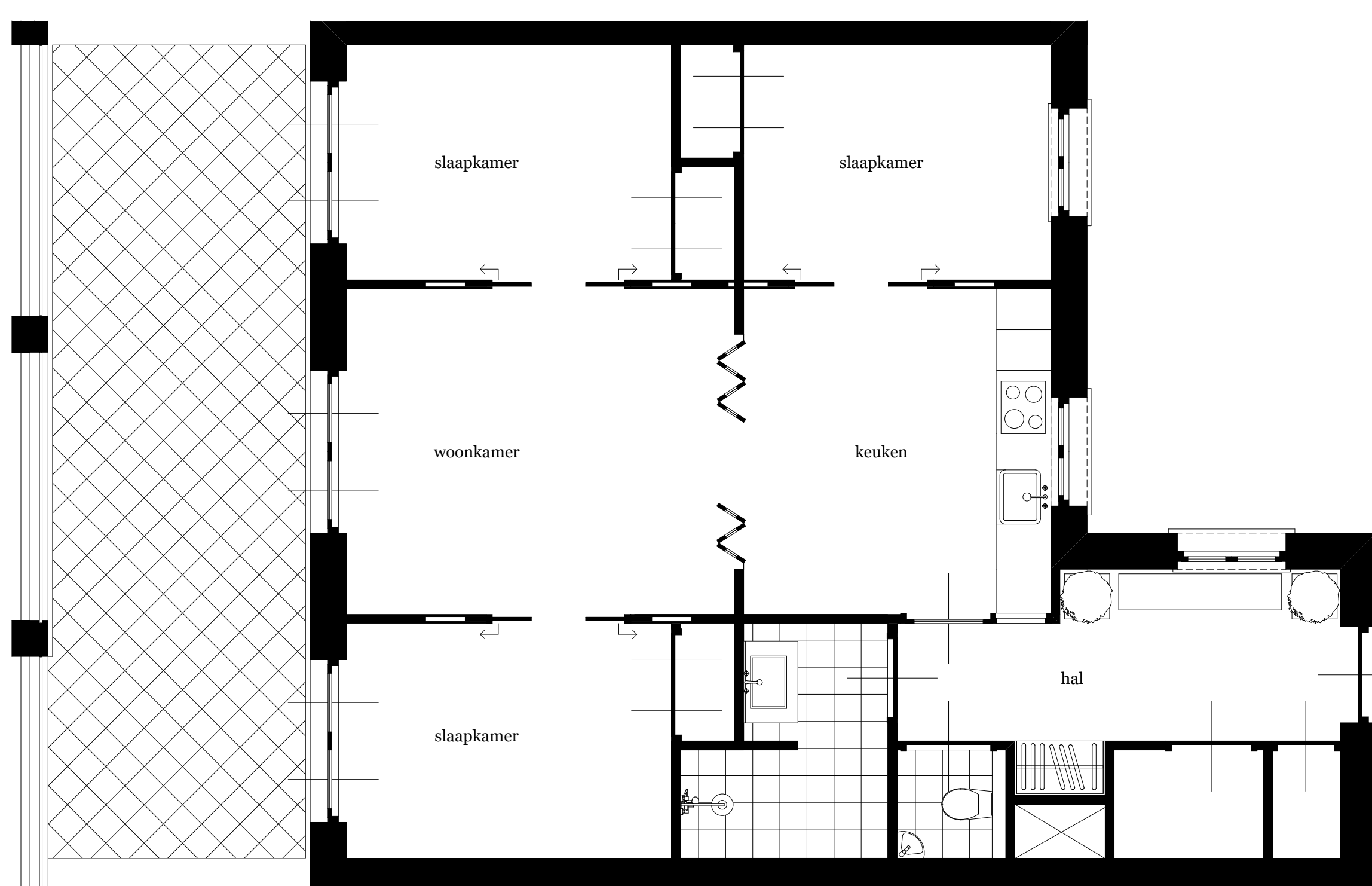
hoekwoning met 2 slaapkamers 1:100

**Propositie**

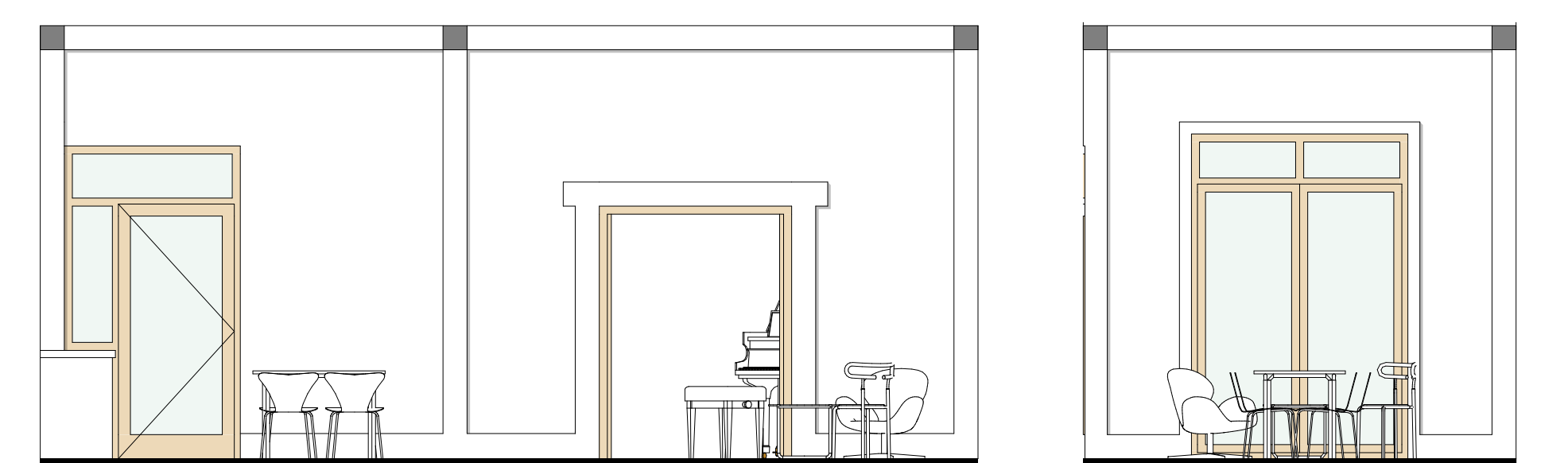
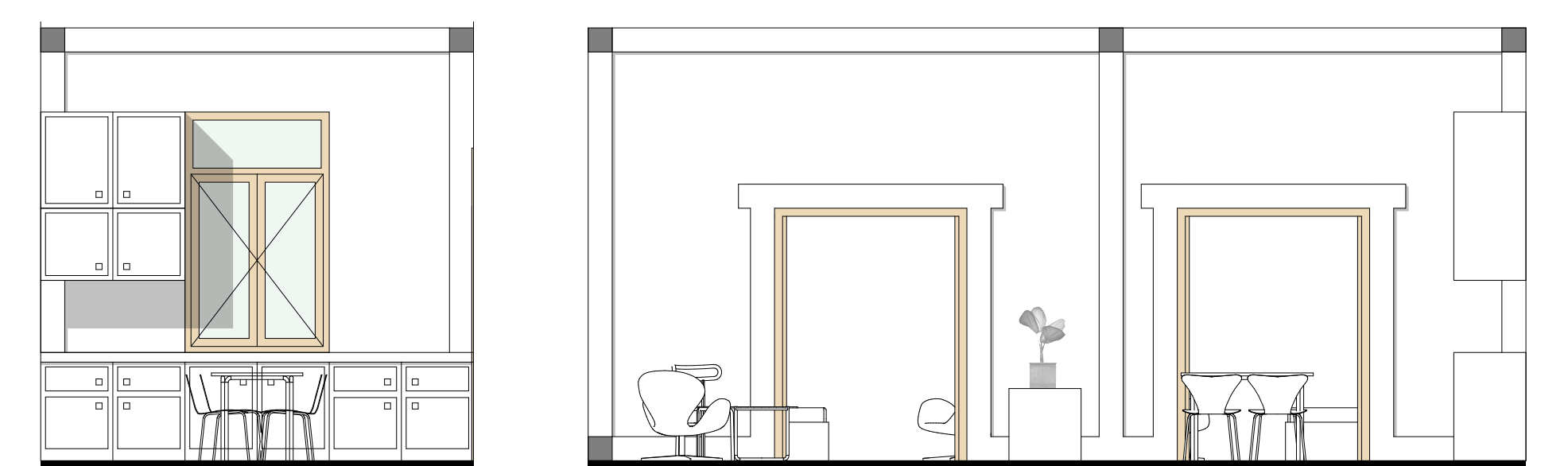
- Een gemixt woongebouw in historisch Rome met gemeenschappelijke tuinen dat zich beweegt tussen 16e eeuwse manierisme en hedendaags rationalisme -  
 - A mixed residential building in historical Rome with communal gardens, existing between 16th century mannerism and contemporary rationalism -



situatie 1:2000



tussenwoning met 3 slaapkamers 1:50



plafondtekening & wanduitslagen 1:50