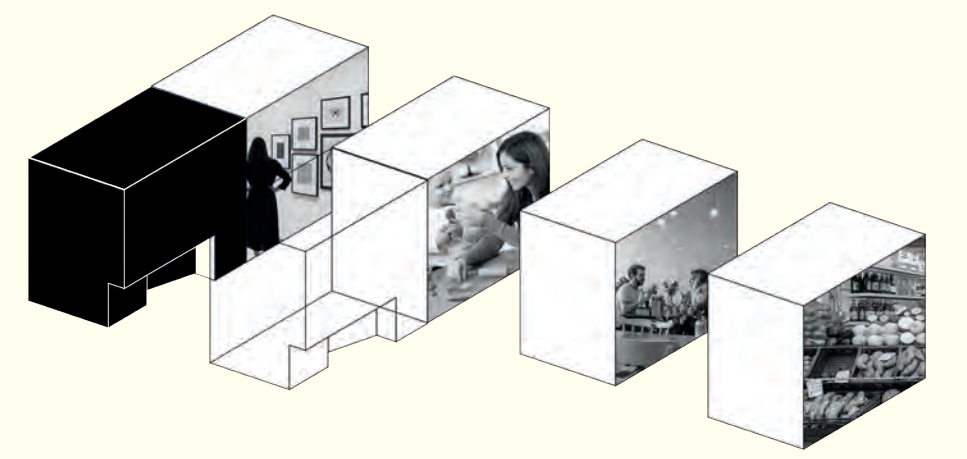
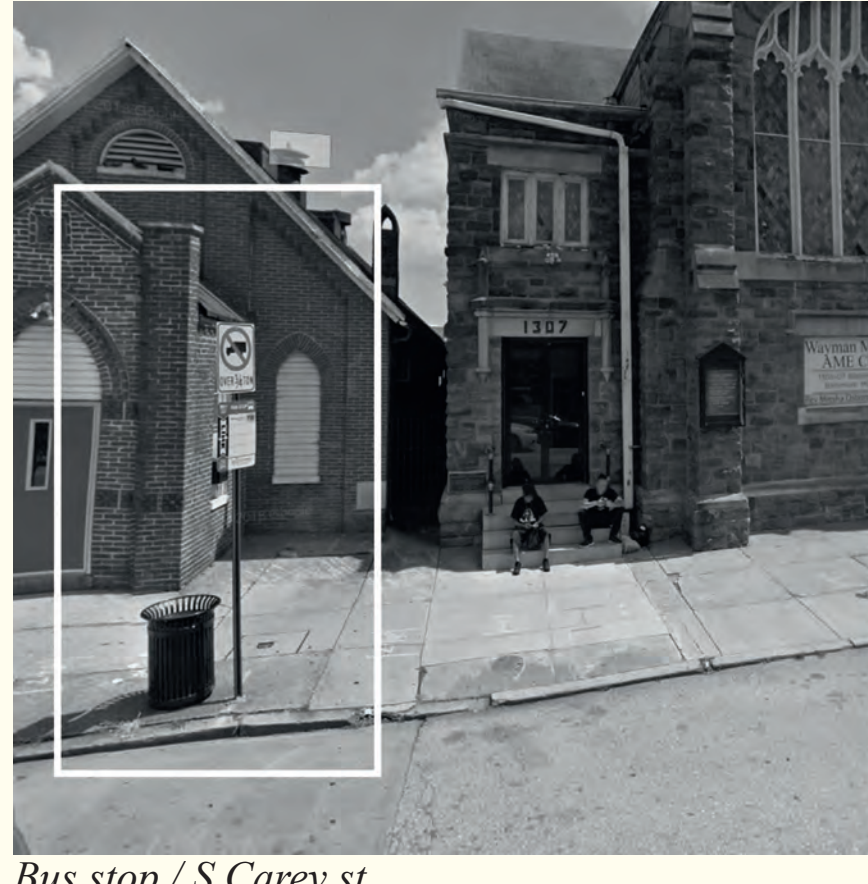
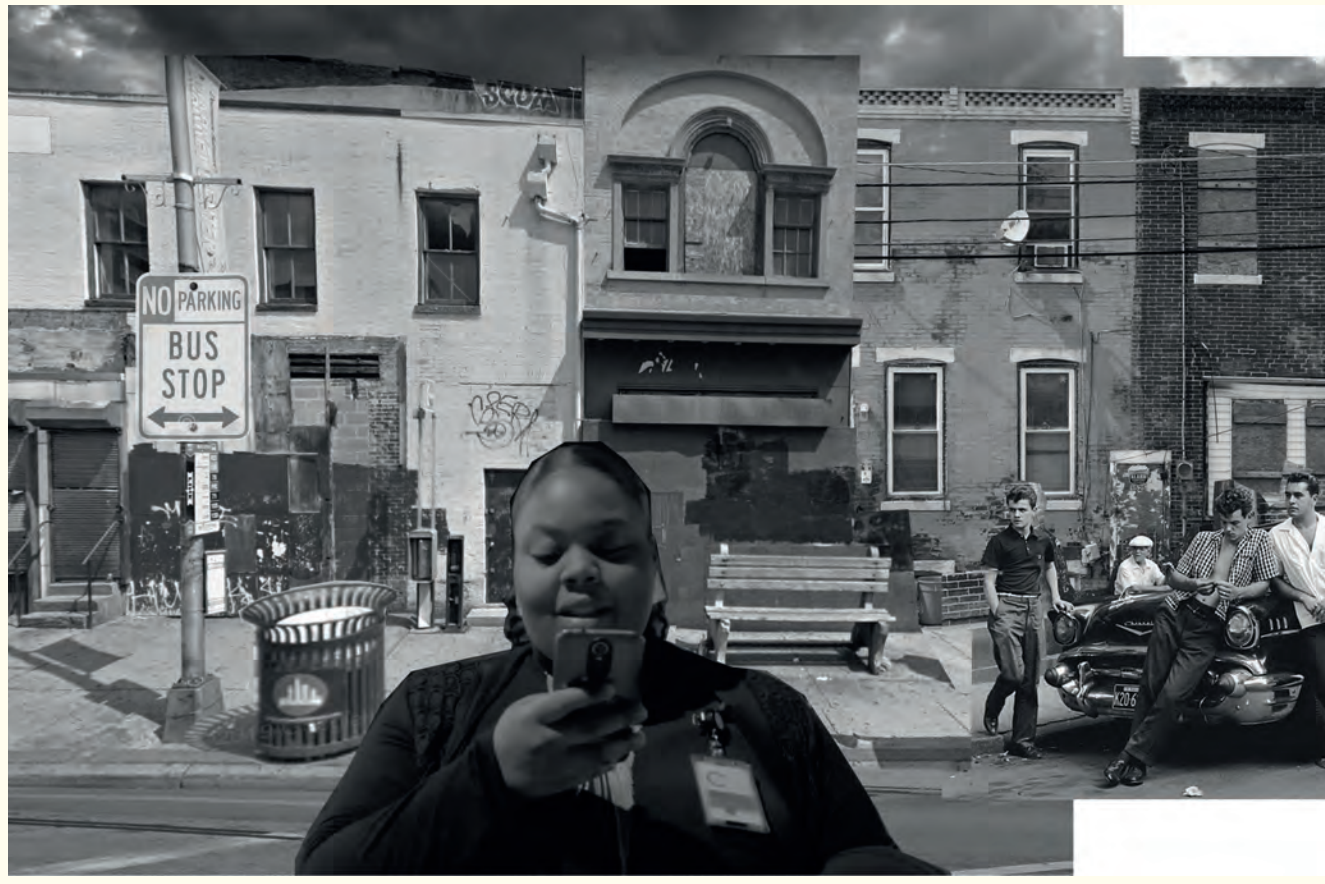


# BALTIMORE CORNER STOPS

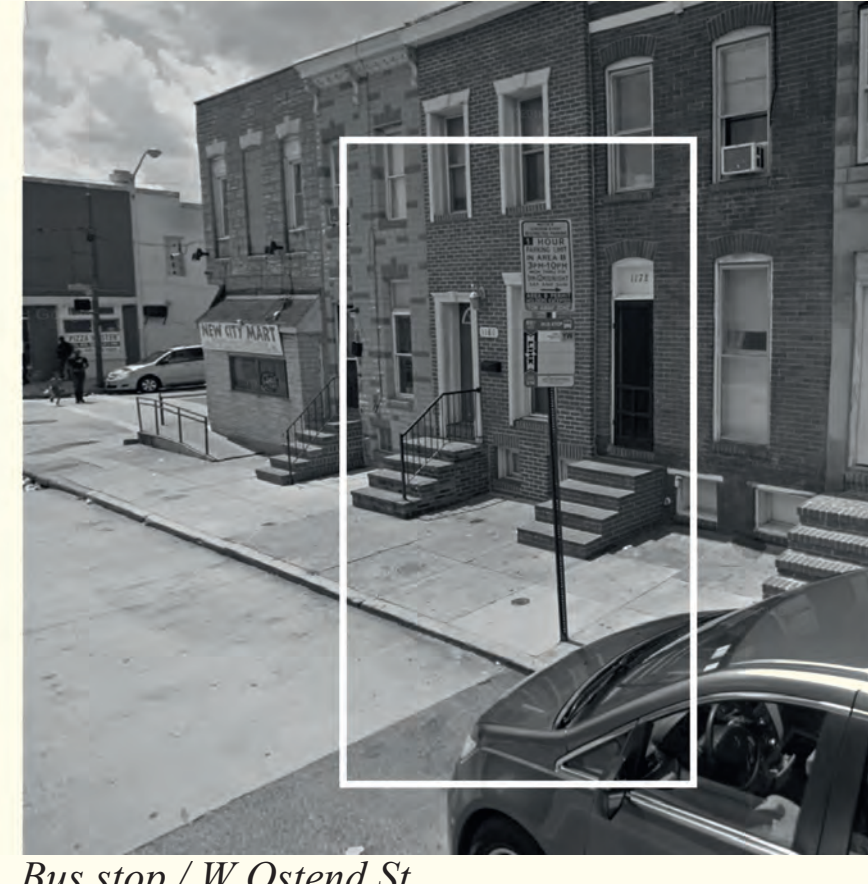
GOAL: Destigmatising using the bus as your way of transportation by creating an appealing place to wait on the bus!



PROBLEM: *These places have no soul!*



Bus stop / S Carey st



Bus stop / W Ostend St

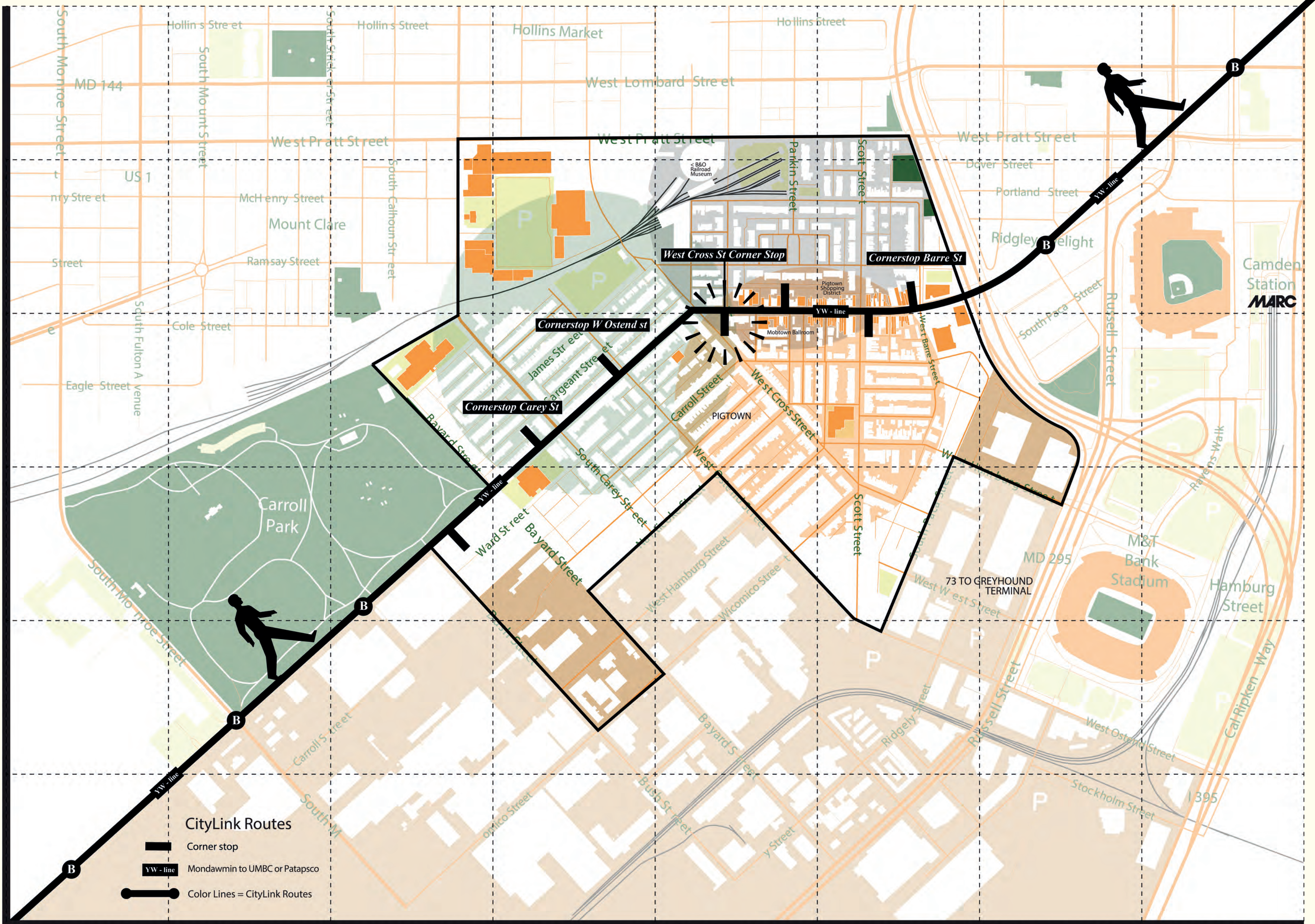


Bus stop / Bayard St

STRATEGY: *Expand the use of the bus stop, together with local entrepreneurs!*

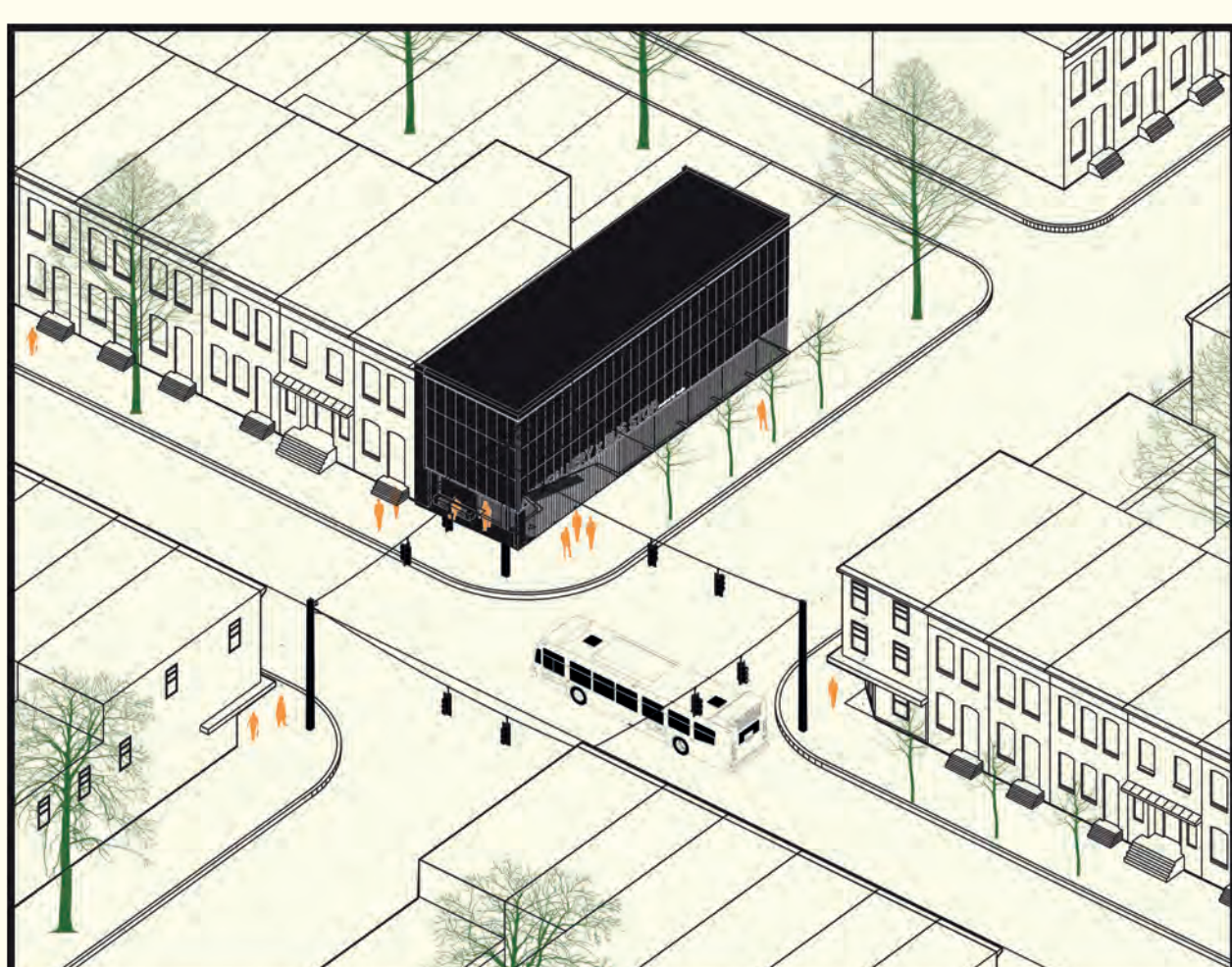
Opportunity

Wealth

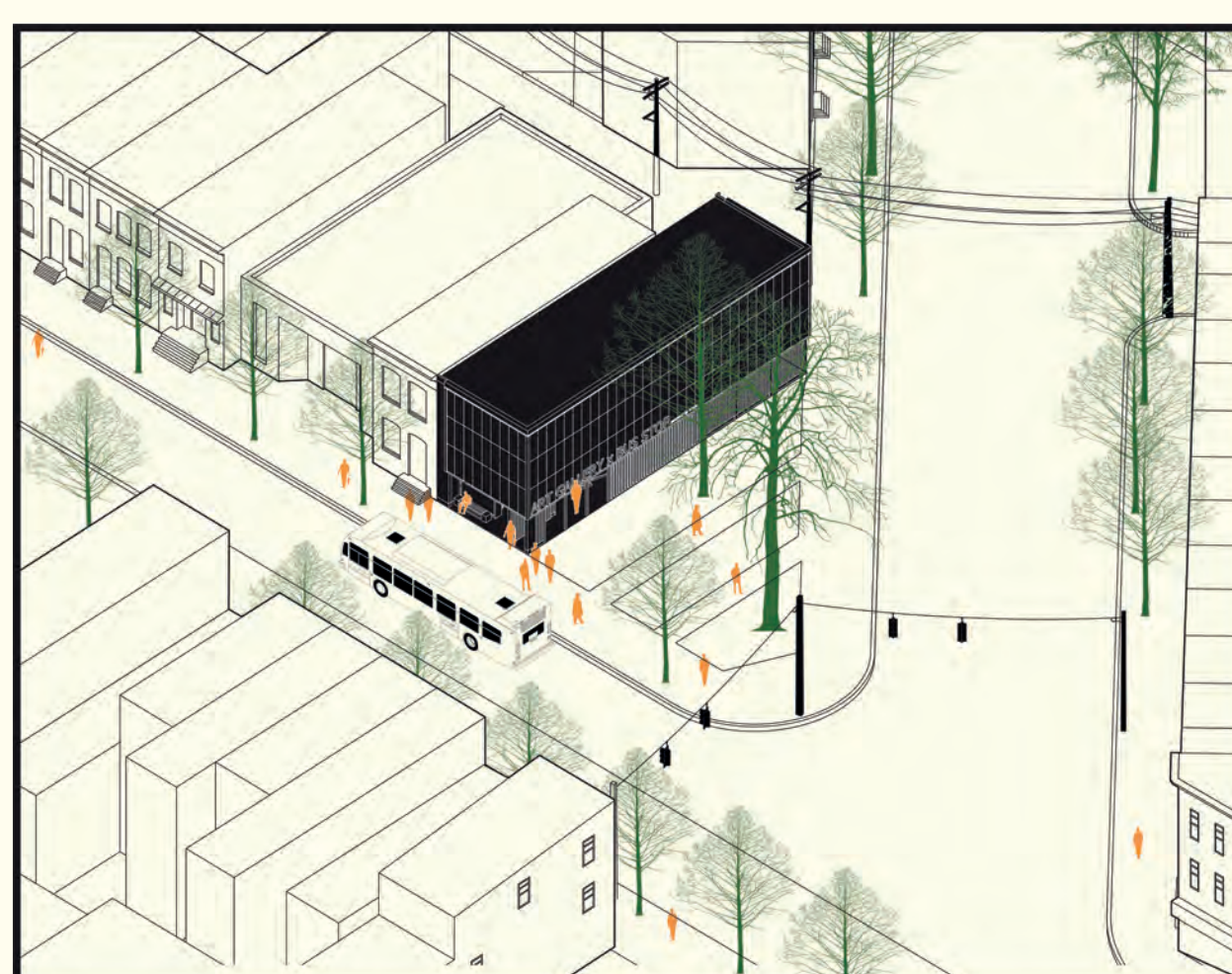


Time

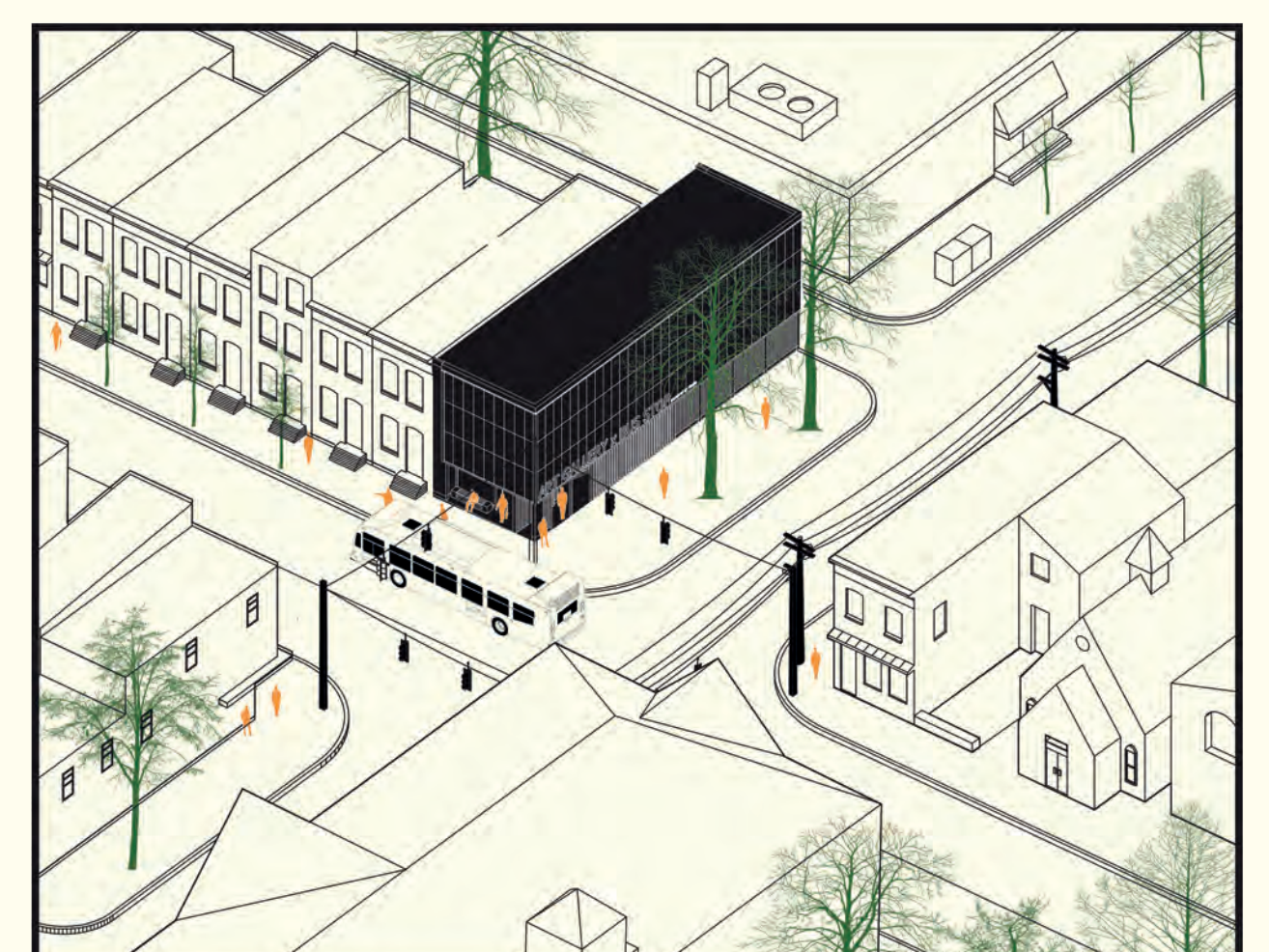
BUILDING TYPOLOGIES: *The bus stop itself can be thought of as a building.*



Public facilities x Bus Stop Ostend St



Catering facilities x Bus Stop West Cross St



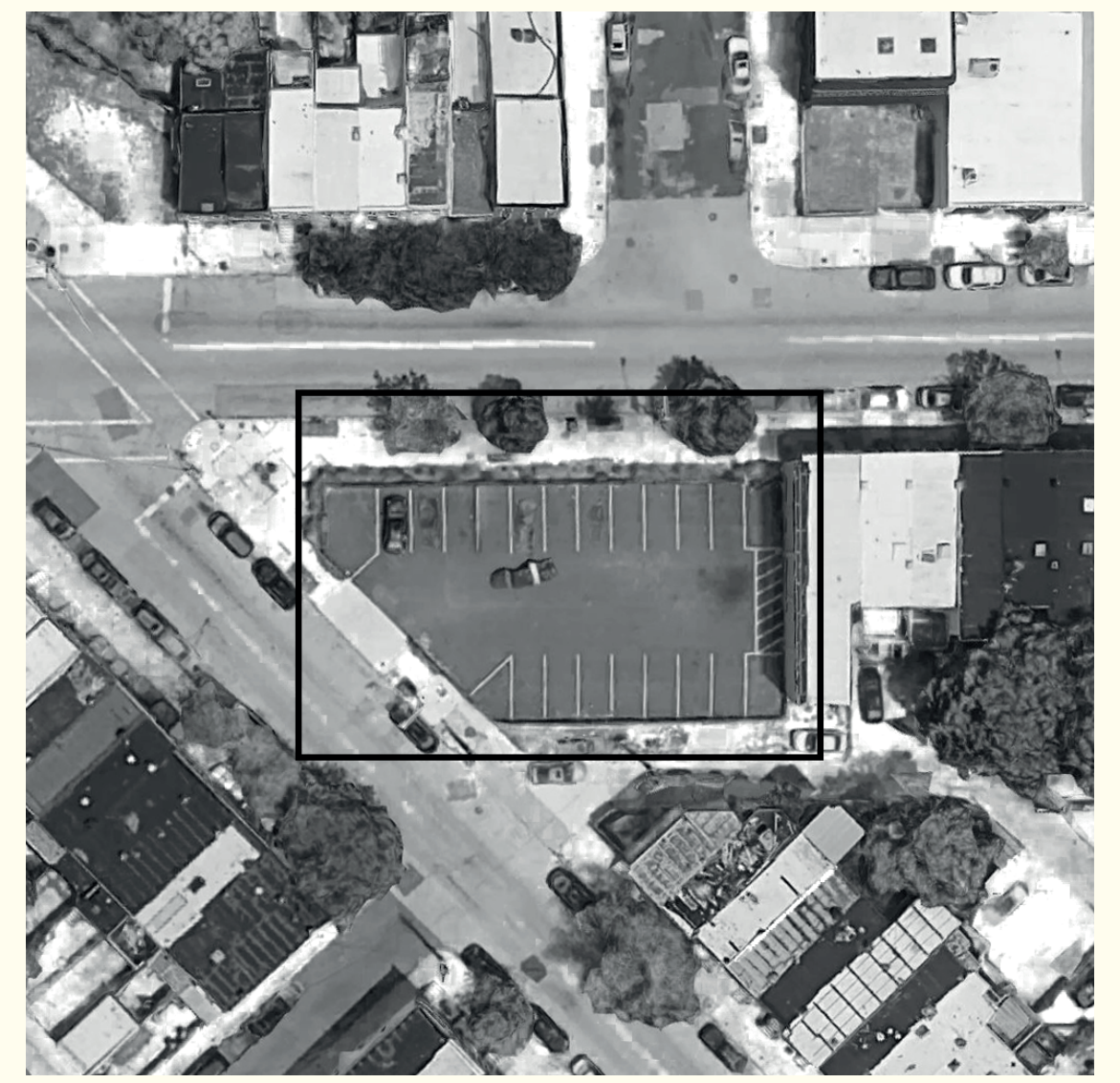
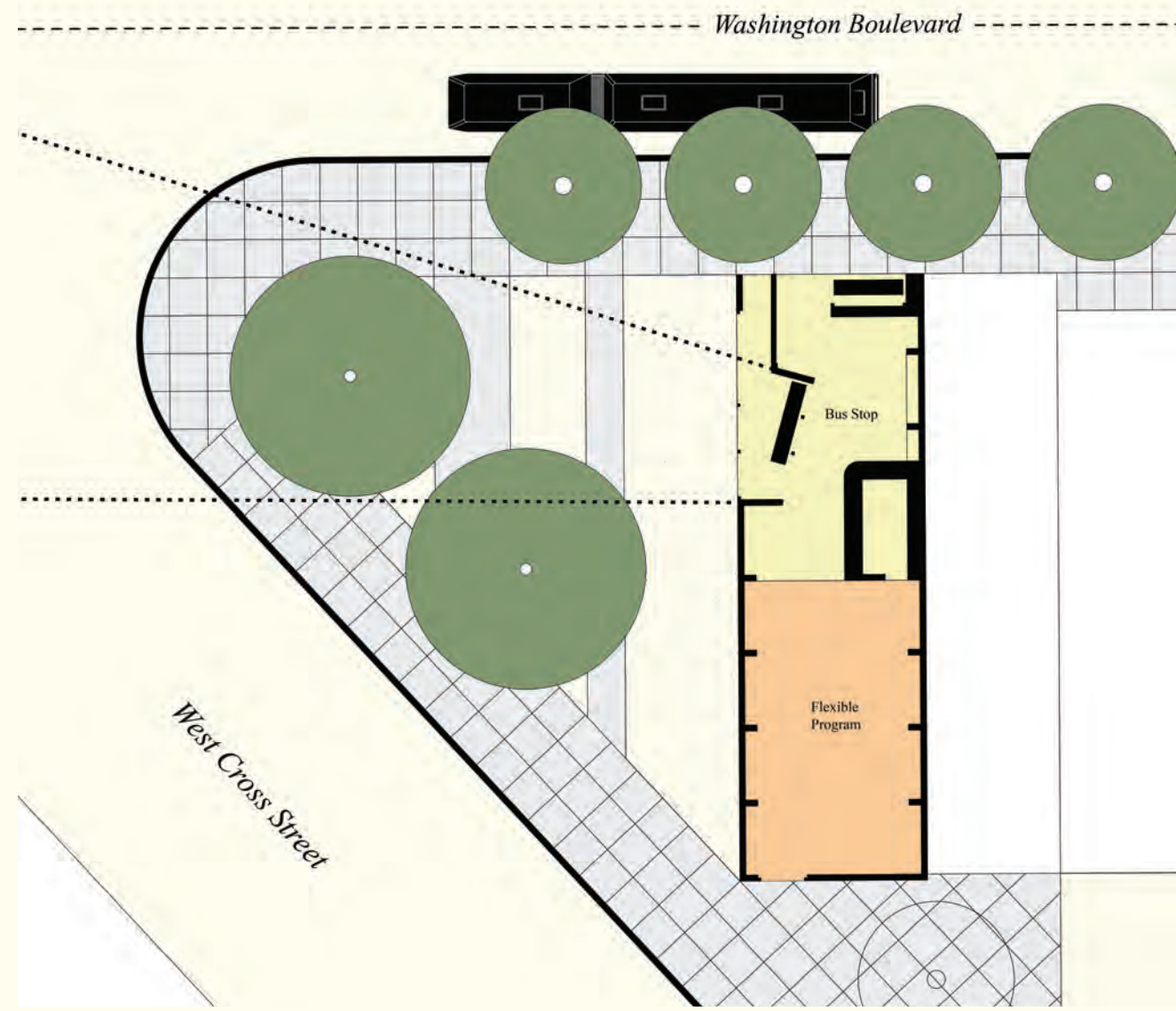
Commercial facilities X Bus Stop Carey St



The Road out of Poverty Is Paved With Better Transportation. Transit access is the No. 1 factor in escaping the cycle of poverty (Harvard University,

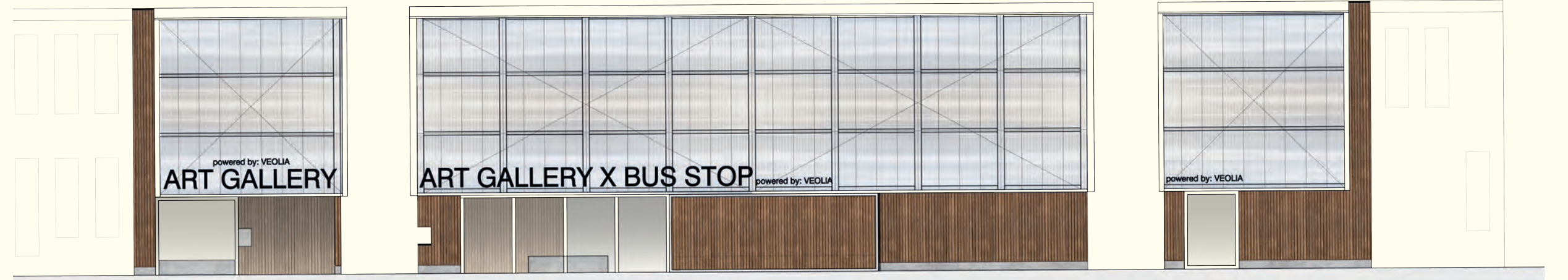


## DESIGN: (Local) Art Gallery x Bus Stop

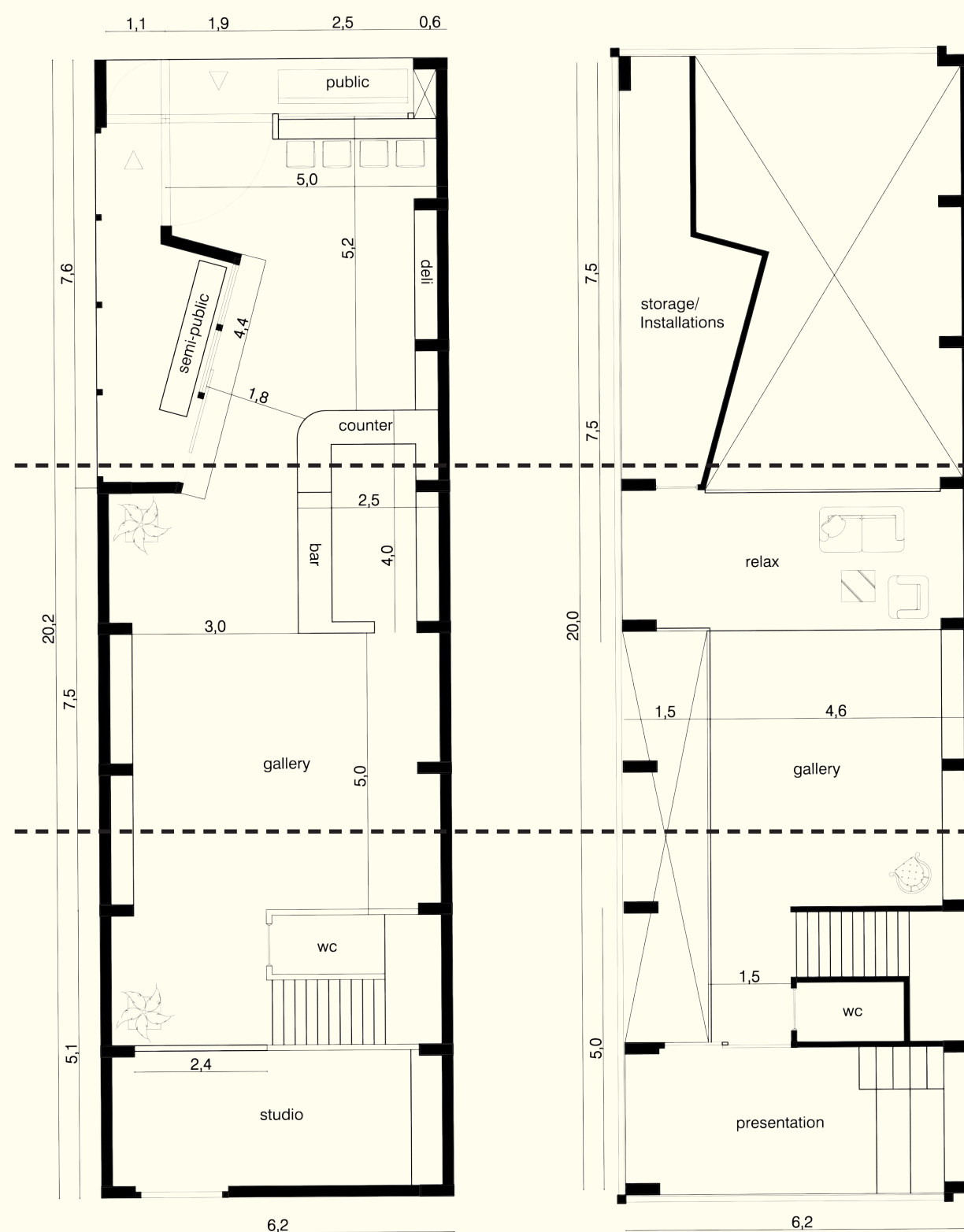


Context: Building and public space

Plan area: Parkinglot



The facade consists out of a closed wooden 'plint' and above the 'plint' poly-carbonat elements



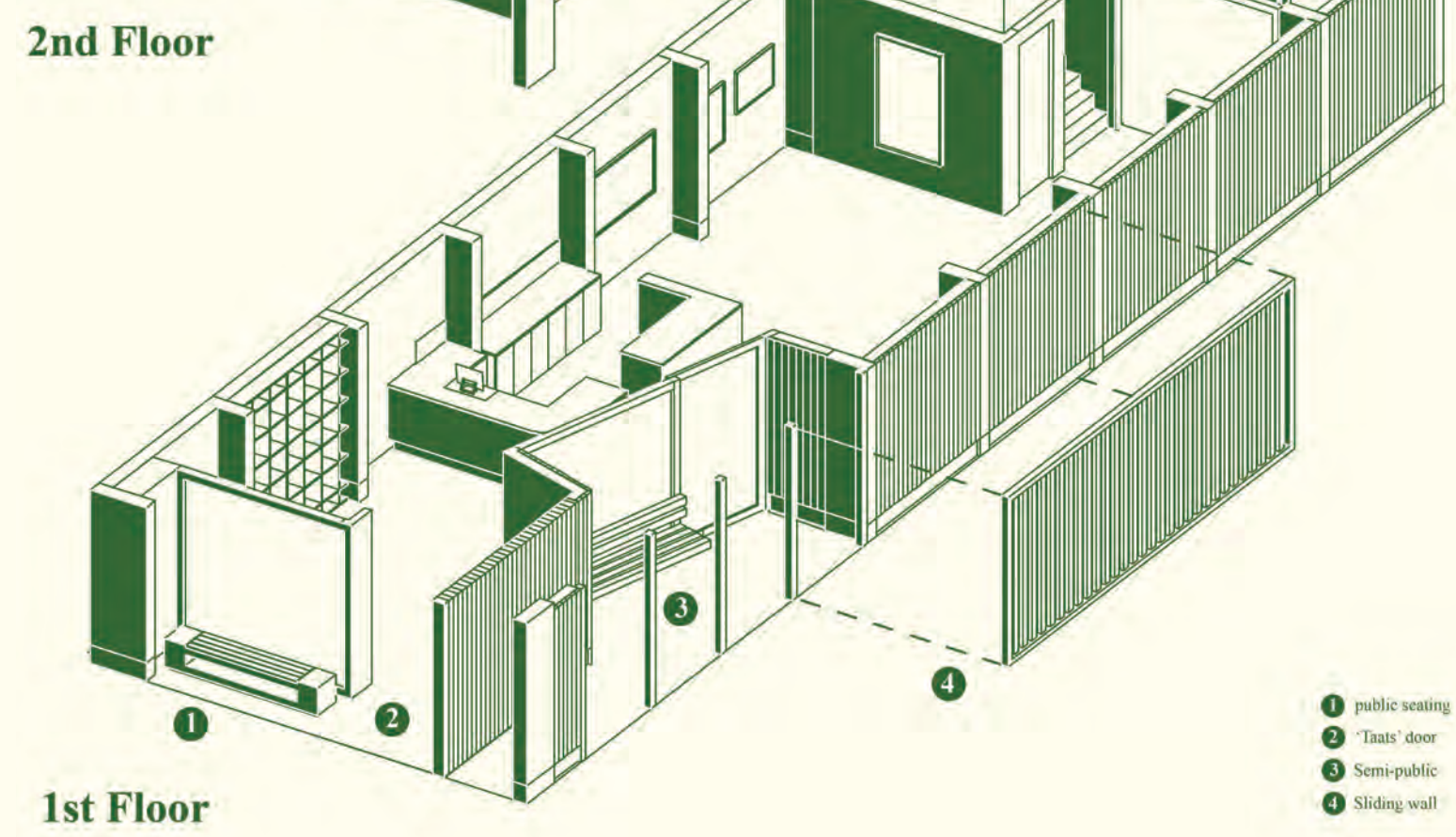
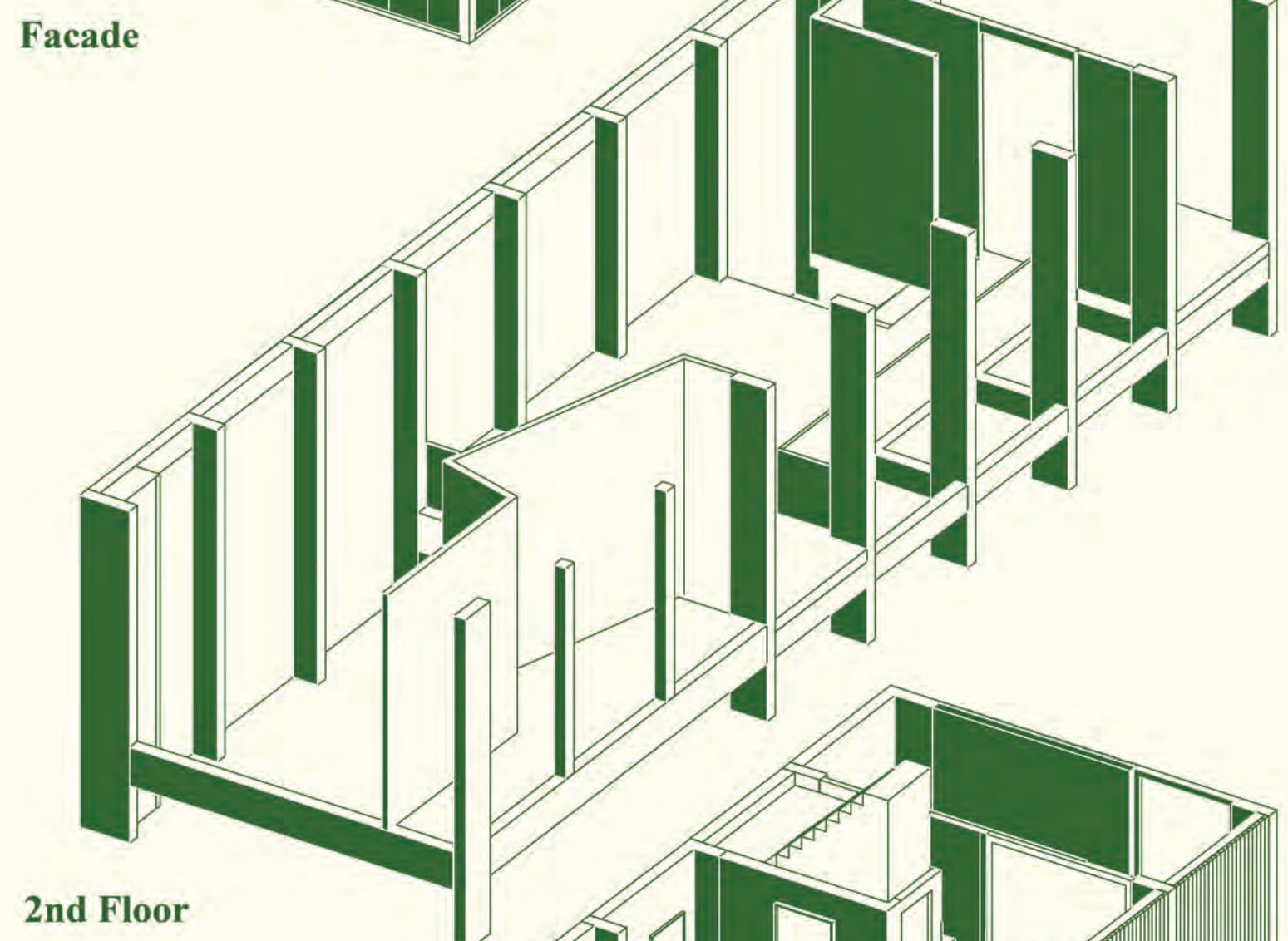
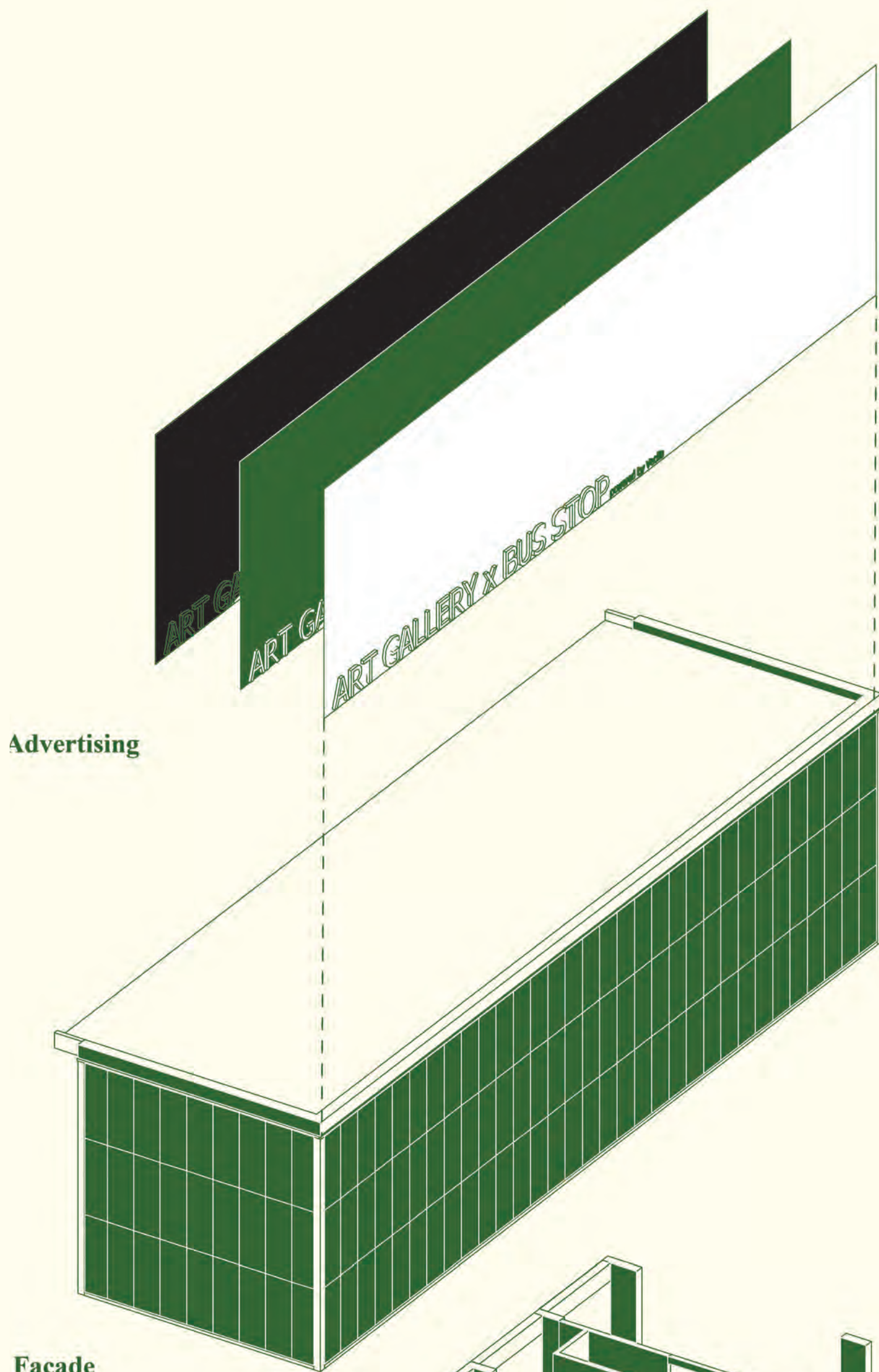
The counter connects the waiting area (front) with the gallery (back)



When u say 'Hi' or buy drink; you can take a seat dry and comfortably



Or get inspired by art presented in the gallery



- 1 public seating
- 2 Taxi's door
- 3 Semi-public
- 4 Sliding wall

## Baltimore Corner Stops

In Baltimore there is a big stigma on using the bus as your main form of transportation. It is often seen as a last resort: your only choice of transport, because you don't have the money to buy your own car. I dislike this dising of people using the bus! So my goal within this project would be to make the whole experience of catching a bus a more dignified event.

The places where you have to wait on the bus emphasize the stigma. These bus stops are very depressing. In most cases, the stop is just a pole in the ground with a trashcan full of garbage next to it. Here, you can wait for the bus. My conclusion is that these places have absolutely no soul and are certainly not dignified. In my opinion, the bus stops are the real problem in keeping this stigma alive.

I started to rethink and explore how the use of the bus stop can be expanded into one building, together with the local community and entrepreneurs, to serve more public purposes. Different type of bus stop building typologies are now imaginable and the potential uses are boundless.

The building design is based on the dimensions of a typical Baltimore row house, quite narrow but very deep. The front of the building is always designed to serve as space for the bus stop. The area in the back of the building and the second floor are reserved for different types of facilities. The floor plans are very flexible to serve different needs. The building is made with wood constructions.

The power of this building is that it's part of a new Baltimore wide network that will create corner stops throughout the whole city. These buildings function as anchor points that connect different neighborhoods in Baltimore. It creates a new kind of collectivity that can help with de-stigmatizing the bus.

