

PIGTOWN - PIT STOP

David Sonntag, 2019

The Pigtown - Pit stop is a social service station which serves the neighborhood of Pigtown and the city of Baltimore.

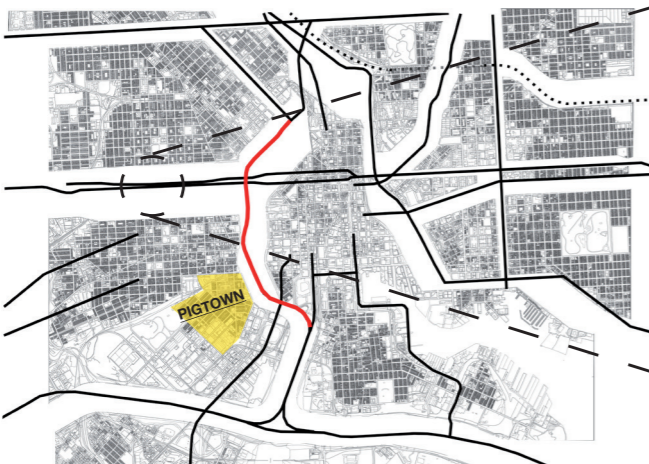
Segregation by infrastructure

A long history of (racial) segregation killed the city of Baltimore, and it only became stronger in the last century. The development of a strong infrastructure on the in and outside of the city of Baltimore contributed even more to this segregation. Wide avenues and boulevards divided the city and its neighborhoods. The Baltimore Beltway was a reason for people to move outside of the city since the car became widely available. These highways to the suburbs were designed with the intention that middle and upper class people didn't have to drive through lower class neighborhoods anymore. These highways went straight to downtown while tearing up the city's fabric at the same time. If we look at the kind of roads that are causing this segregation, they are mostly wide roads, sunken highways, elevated highways and wide boulevards that are designed as a green belt.

Even though the city is so segregated by its infrastructure, the infrastructure also provides a very well connected network within the city of Baltimore. Alongside this network service programs are attached to it. These programs serve these streets but also the city of Baltimore. These programs are mostly car oriented and are designed for a quick use. But the nice thing about these programs is that they act as a social hub within a neighborhood or alongside the street. It doesn't matter who you are or where you come from, everybody is allowed to make use of these spaces. Convenience stores, Gas stations, Car washes, but also privately owned businesses.

The characteristics of these public domains are a big quality within the city, in a way they make borders between neighborhoods less hard and more approachable. For my design I would like to use these characteristics as a base principle. The structure of the design is derived from gas station architecture: The simplicity of its design but also the way the structure is organized: a light, easy to recognize, and well lit up place that feels like a safe place to hang around. Even though it is a space that is really designed for quick use, it gives a certain amount of open interpretation.

My design will be a social service station that will soften the border between Pigtown and the city of Baltimore while retaining its original qualities as a 24/7 complex.



Baltimore's highways, boulevards and wide roads which literally tear the city apart. Martin Luther King Boulevard is highlighted in red. The neighborhood of Pigtown is highlighted in yellow.

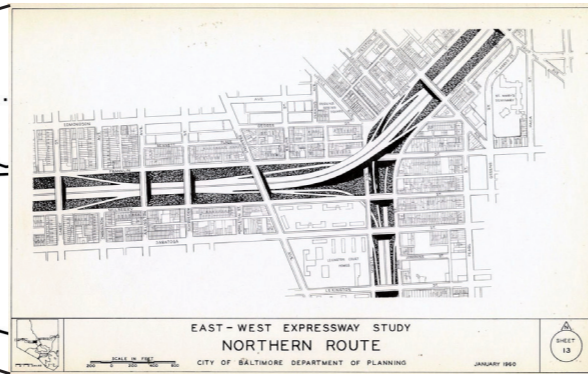
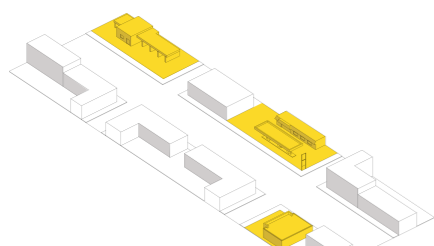


Illustration from "Study for East-West Expressway," Volume 2, Sheet 3, 1960. An example of a proposed design for a highway that divides West Baltimore from Downtown.



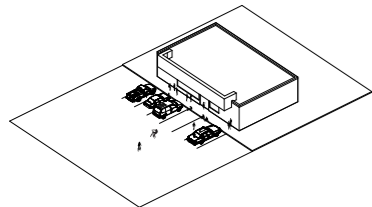
The only part of the East-West Expressway that got realised, also known as "Highway to nowhere" April 2019

Programs which serve Baltimore's roads

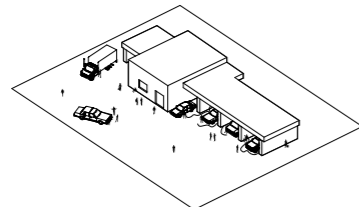


Service programs alongside a highway, boulevard or road.

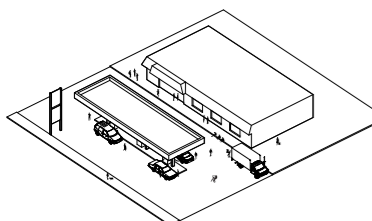
Service programs as social hotspots



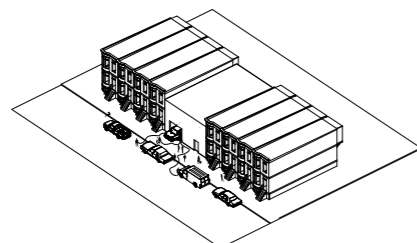
- Convenience stores**
- Single building or part of a complex
 - Wide range of products
 - Acts as a social hub by every kind of person



- Car wash complexes**
- Partially closed off locations
 - Company or privately owned business
 - Movement and social interaction



- Gas stations**
- Open and light structures with a good overview.
 - Multi-purpose location.
 - Movement, people come and go quickly.
 - Unintended space for social gatherings, but do act as one.



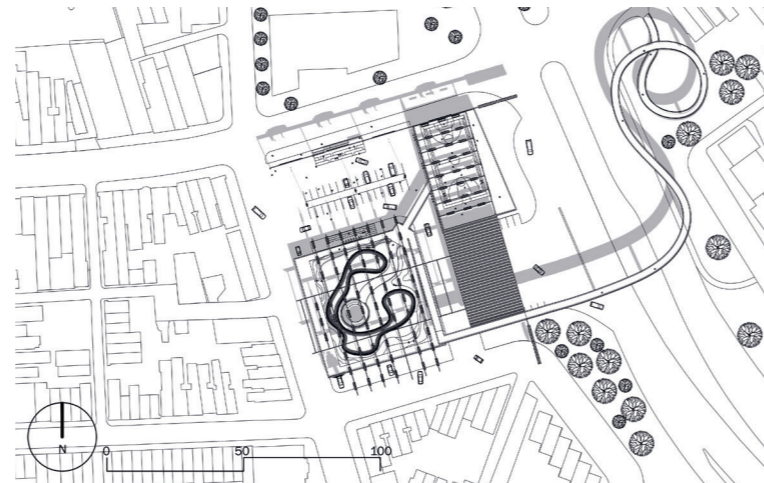
- Privately owned car washes or bodyshops**
- Existing building wedged or attached to the typical Baltimore rowhouse.
 - Multi-purpose location
 - Movement, people come and go.
 - Interaction with the street, since it's the place to wash and sell.
 - Serves as a social function along the streets and neighborhoods.



Existing location alongside the Martin Luther King Boulevard.

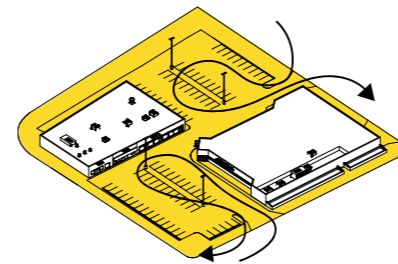


Location in relation to Pigtown, its context and the MLK Boulevard.

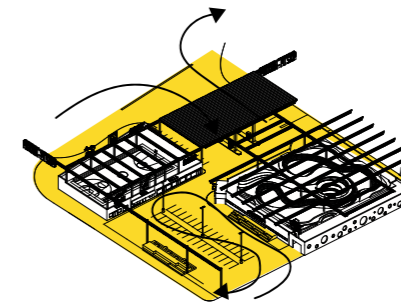


Site plan 1-1000

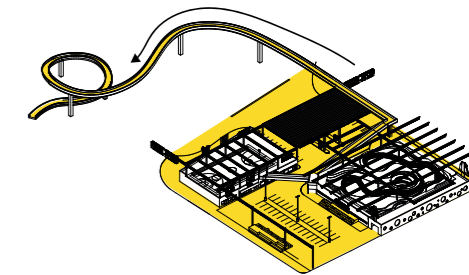
Concept



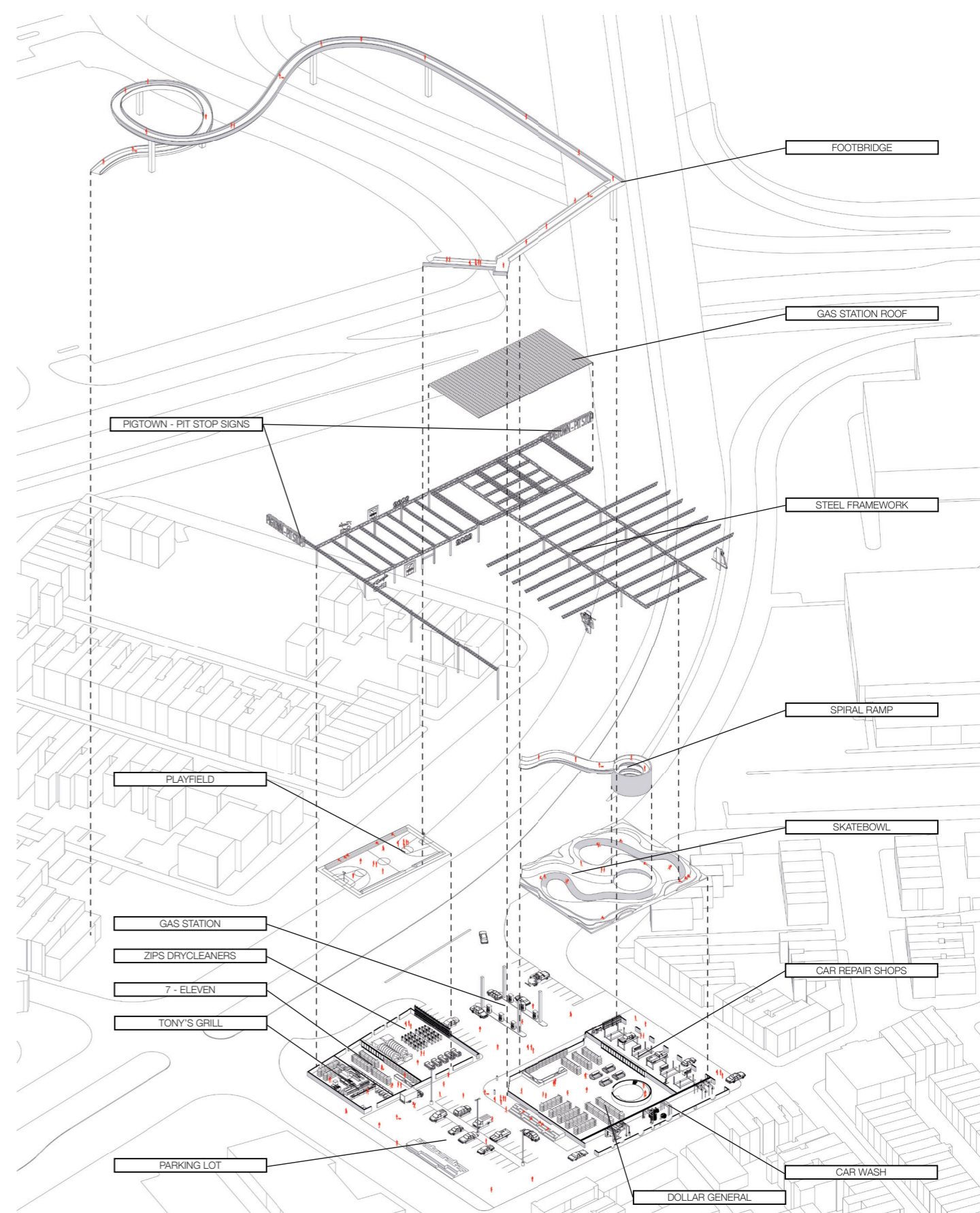
Using the existing location and its current neighborhood/city movement as a quality.



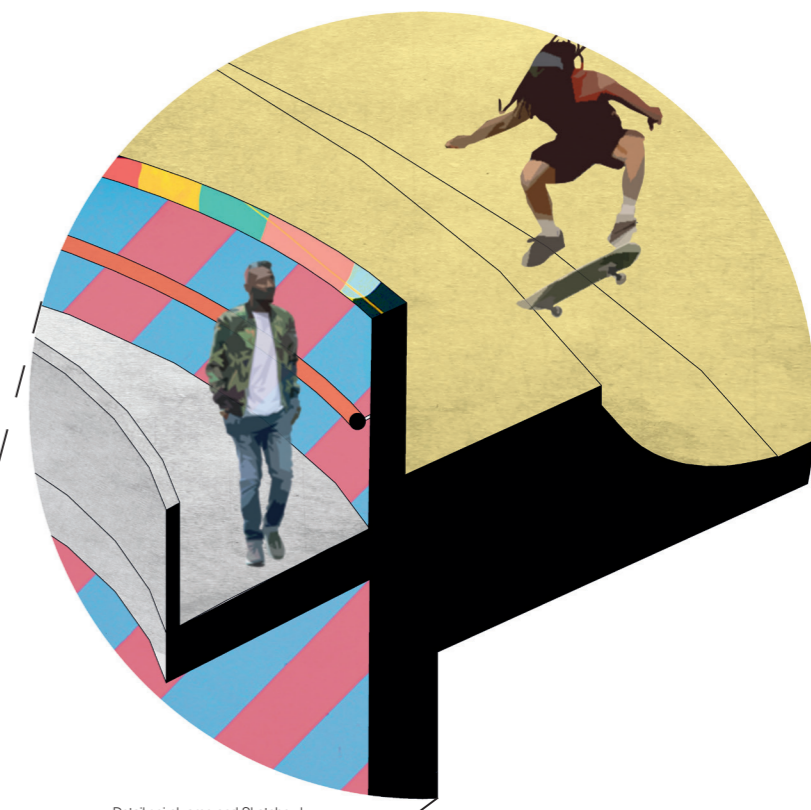
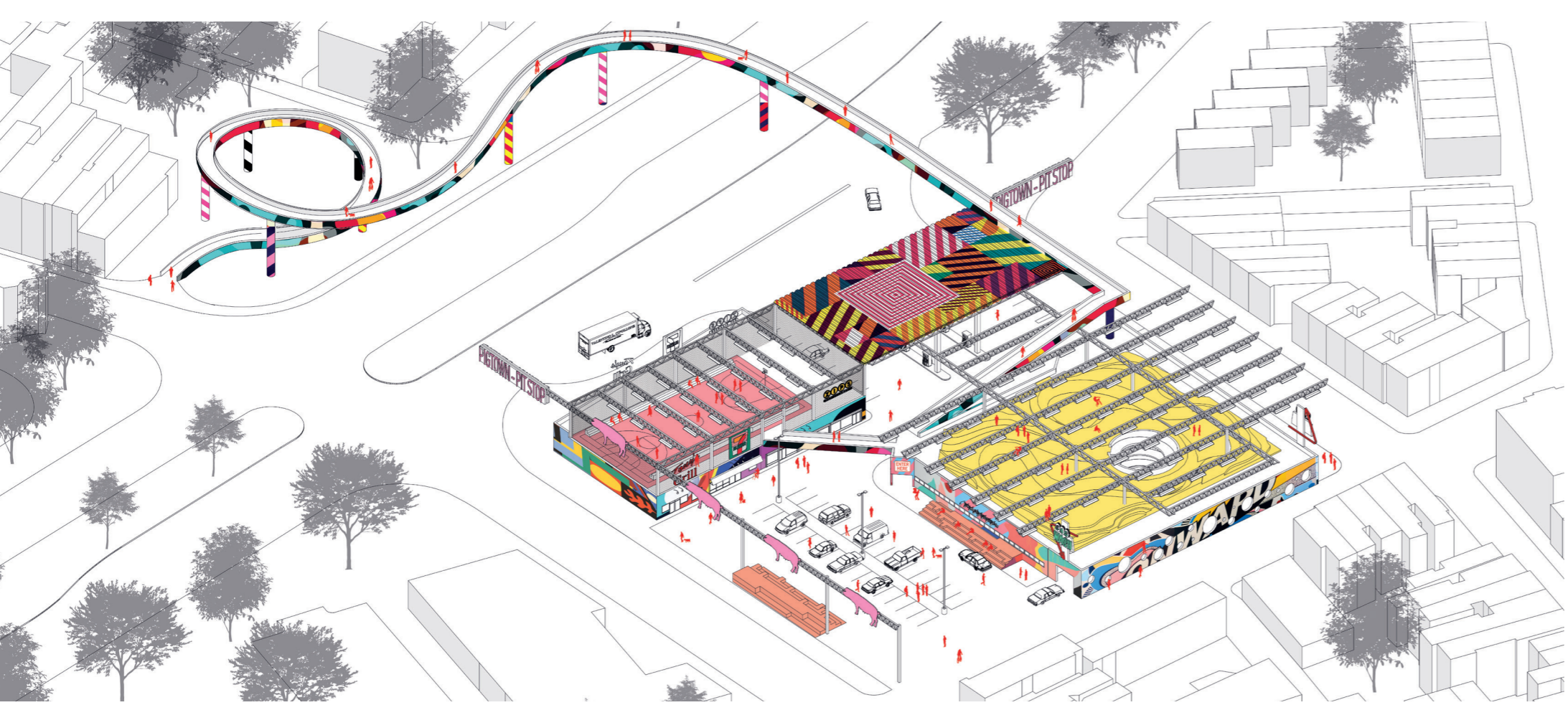
Using the characteristics of gas station architecture and also adding a gas station and similar programs to stimulate the exchange between people. The canopy's frame will provide the possibility to add a different program on the roof: space for a skatepark and a playfield.



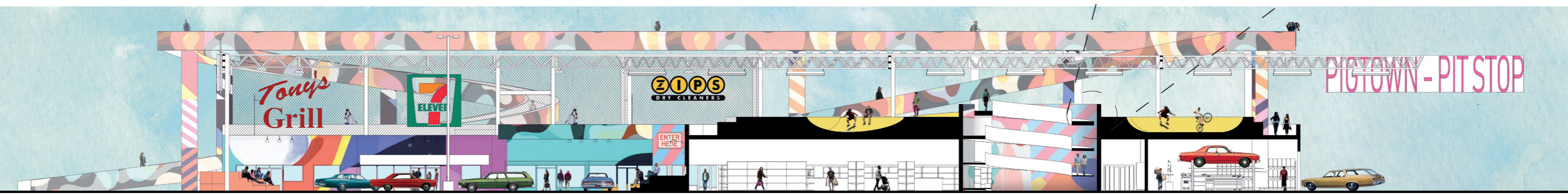
Activating the roof of the complex will result in a direct connection with the parking lot but also with the context. A pedestrian bridge will make it easier to cross the Boulevard towards Pigtown and the Downtown area. The parking lot will also be a space to hang out.



- FOOTBRIDGE
- GAS STATION ROOF
- STEEL FRAMEWORK
- SPIRAL RAMP
- SKATEBOWL
- CAR REPAIR SHOPS
- CAR WASH
- DOLLAR GENERAL
- PARKING LOT
- TONY'S GRILL
- 7 - ELEVEN
- ZIPS DRYCLEANERS
- GAS STATION
- PLAYFIELD
- PIGTOWN - PIT STOP SIGNS



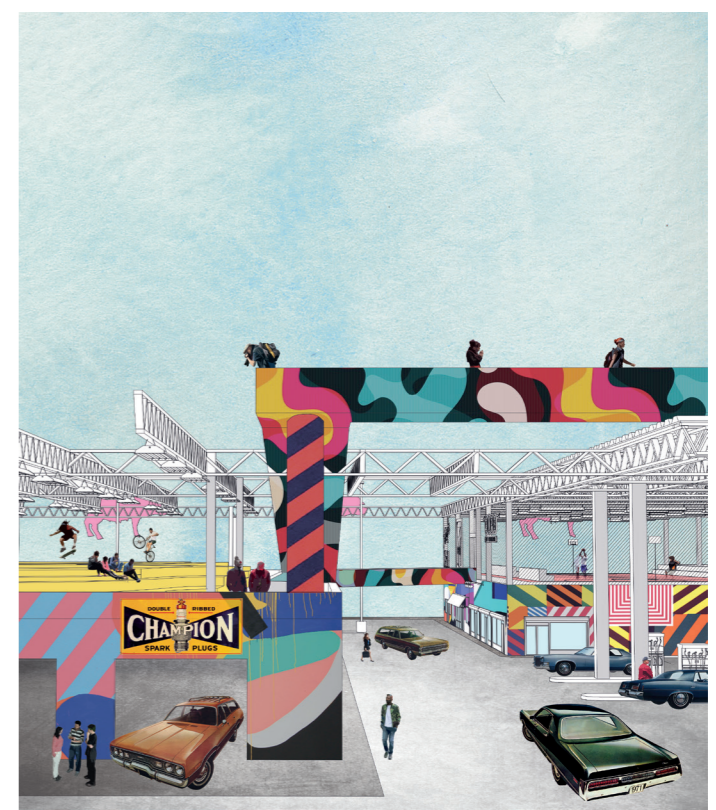
Detail spiral ramp and Skatebowl.



Looking towards the parking lot.



The Skatebowl also gives a great view over the complex.



Repair shops will have a direct connection with the street, which will result in an exchange with the back streets.