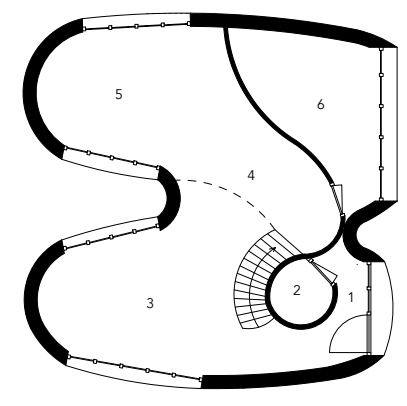
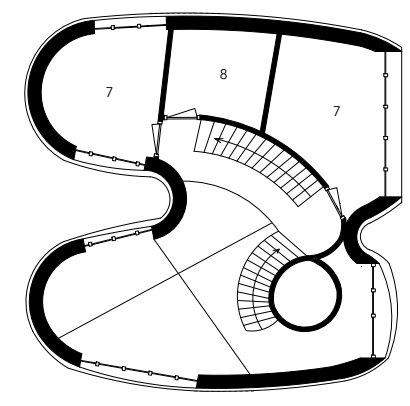


Following form / 10x10x10 woning

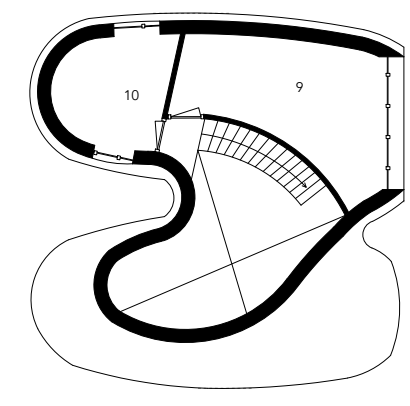
De route van de woning wordt binnen de kubus begeleidt waarvoor gebruik gemaakt wordt van gebogen wanden.



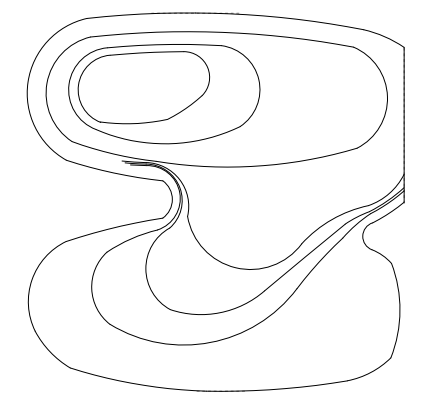
Begane grond 1:200



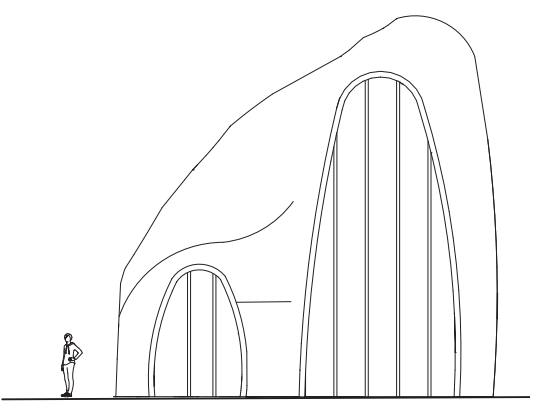
Eerste verdieping 1:200



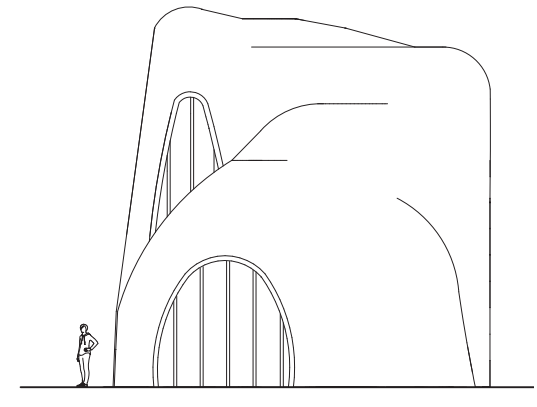
Tweede verdieping 1:200



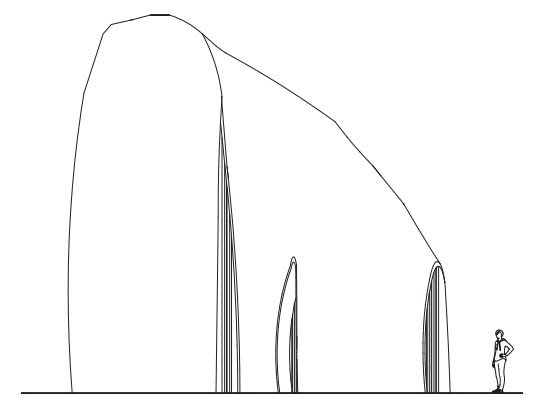
Dakaazicht 1:200



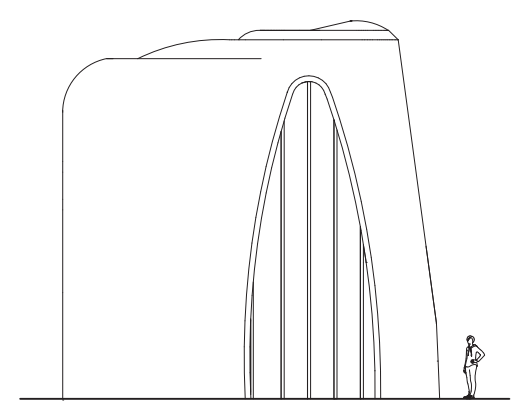
vooraanzicht 1:200



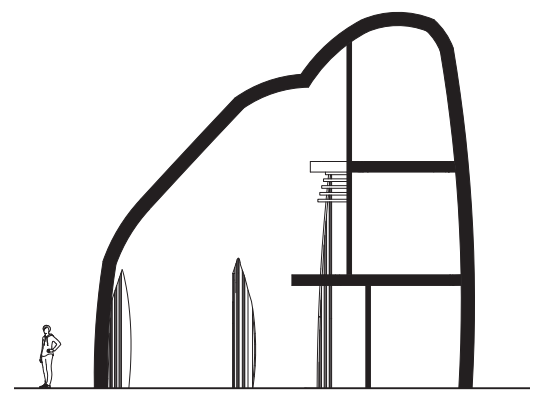
Zijaanzicht 1:200



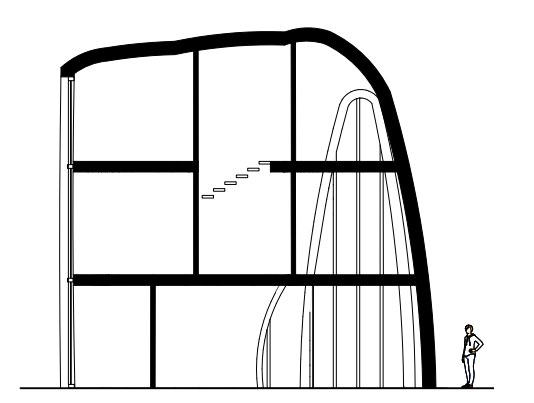
Zijaanzicht 1:200



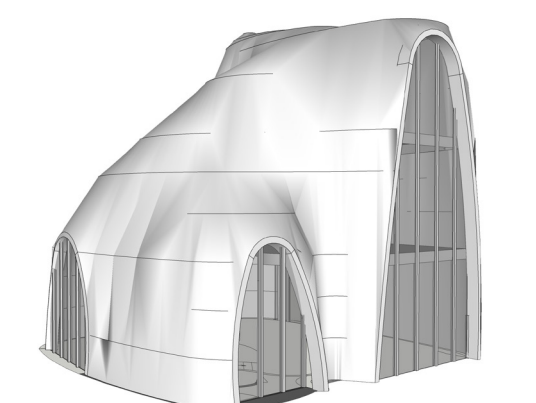
Zijaanzicht 1:200



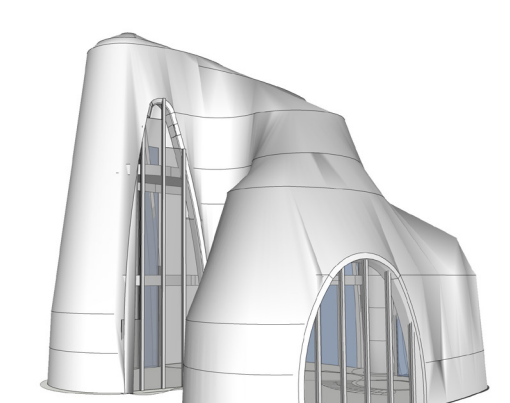
Doorsnede 1:200



Doorsnede 1:200



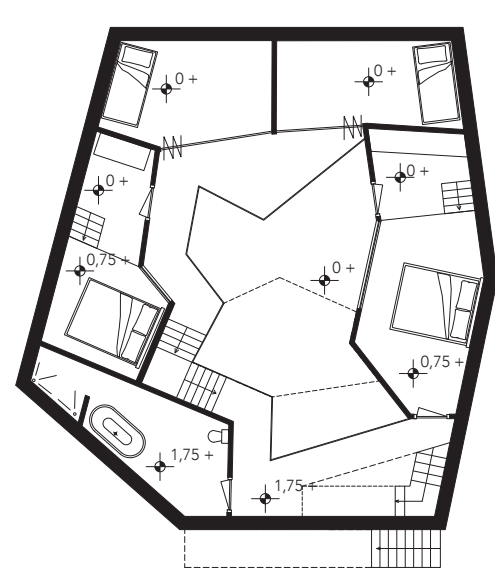
3D impressie



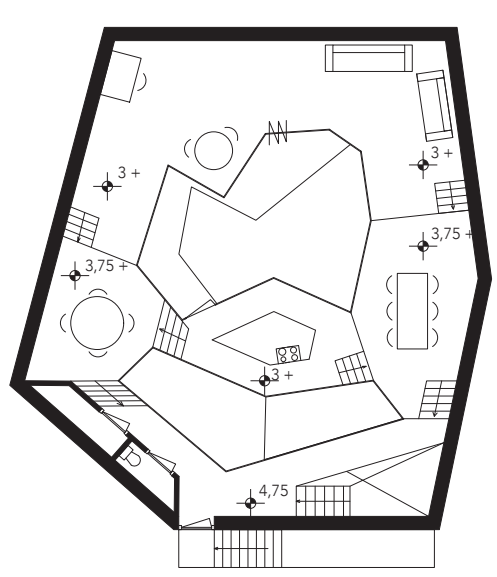
3D impressie

Closed mountain / geen openingen in gevels en ingang op 4,75 boven maaiveld.

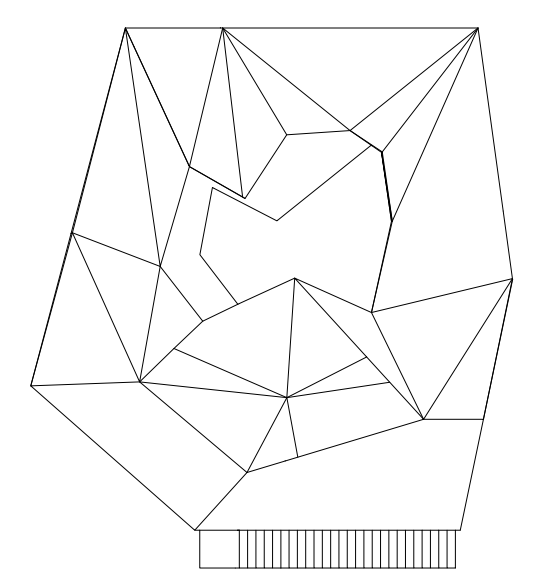
Een gesloten blok waarbinnen een interessante leefomgeving gecreëerd is doormiddel van scherpe hoeken en niveau verschillen refererend aan een berglandschap.



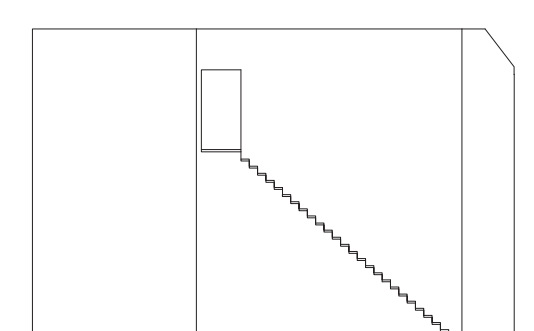
Begane grond 1:200



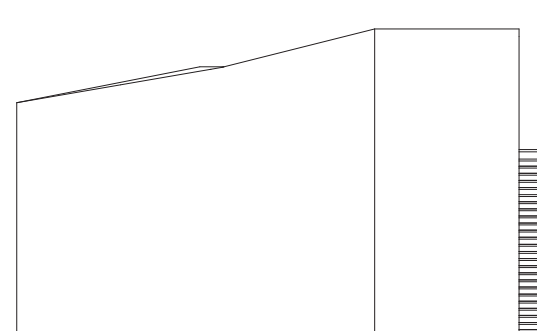
Eerste verdieping 1:200



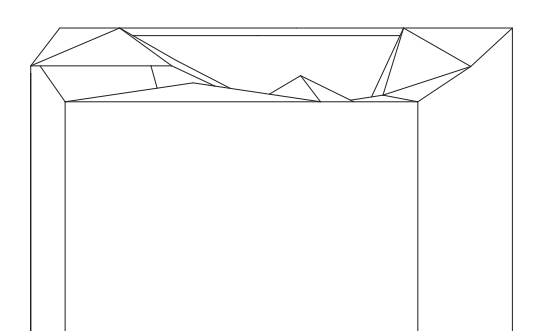
Dakaanzicht 1:200



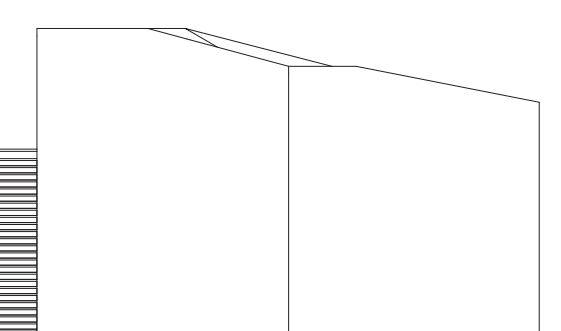
Vooraanzicht 1:200



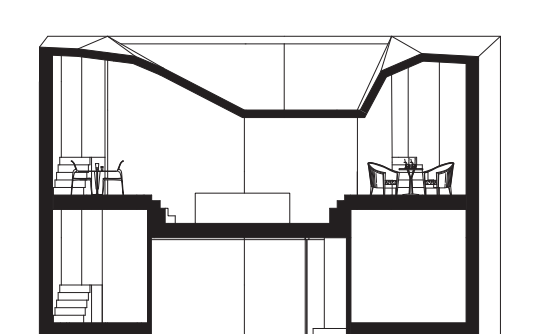
Zijaanzicht 1:200



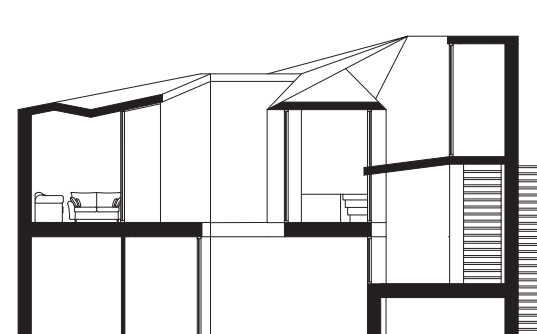
Achteraanzicht 1:200



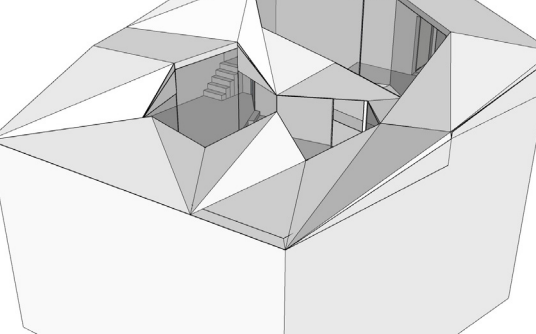
Zijaanzicht 1:200



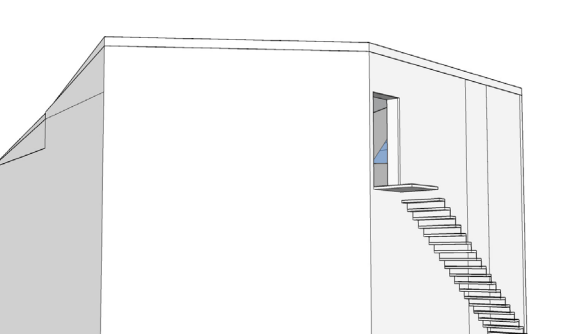
Doorsnede 1:200



Doorsnede 1:200



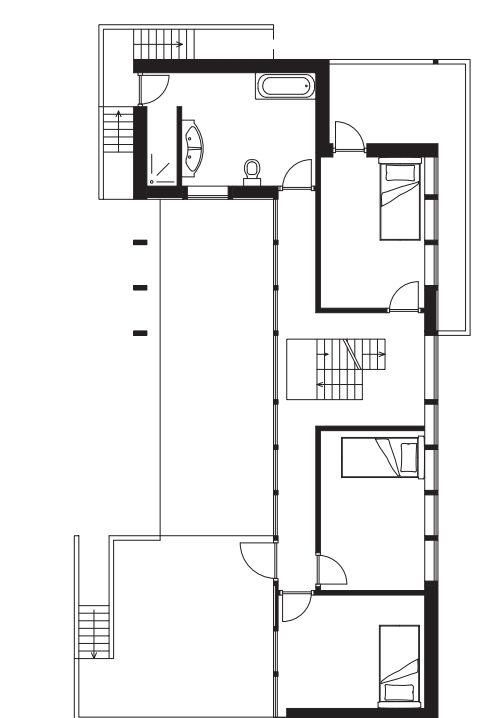
3D impressie



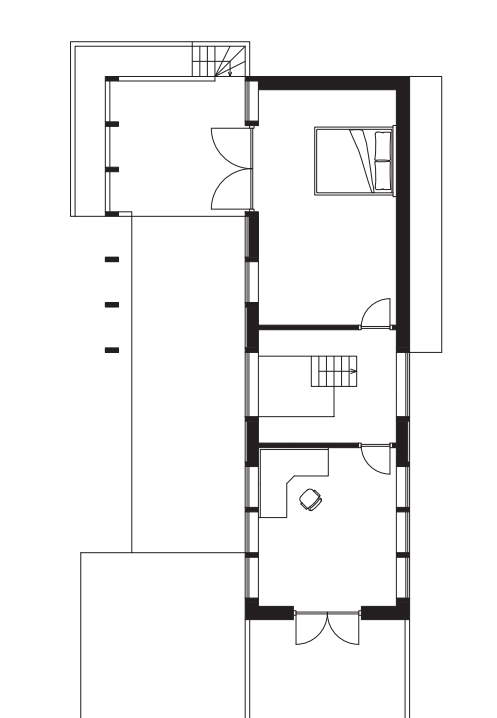
3D impressie

De diversiteit van een zwembad / zwembad 12,5 meter x 3 meter

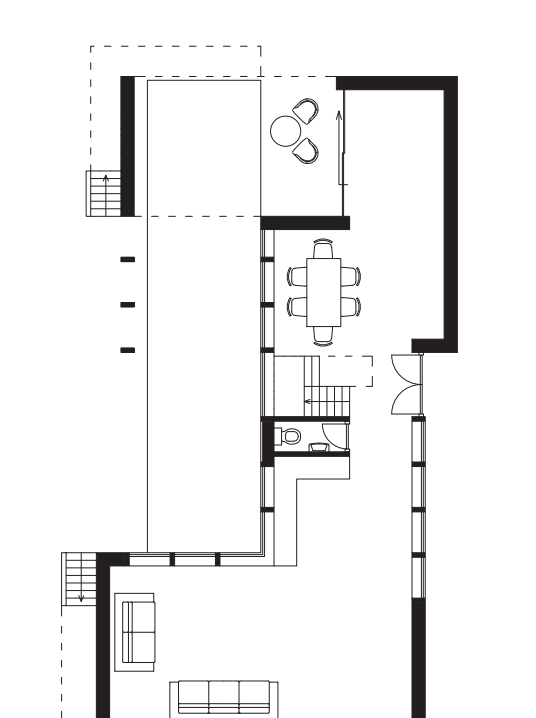
Het zwembad is een groot onderdeel van de woning en neemt daarmee een belangrijk rol in bij de woning. Alle verblijfsruimtes staan in verbinding met het zwembad waarbij de realiteit steeds verschillend is naar mate van de functie van de ruimte.



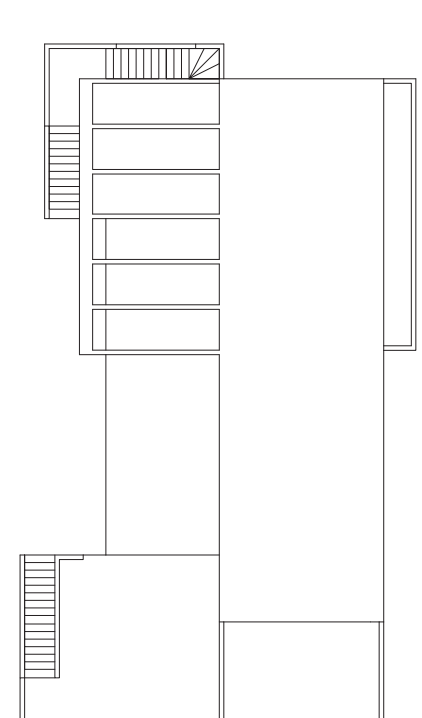
Begane grond 1:200



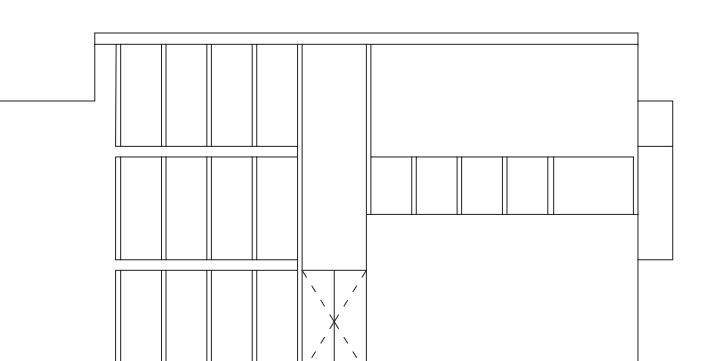
Eerste verdieping 1:200



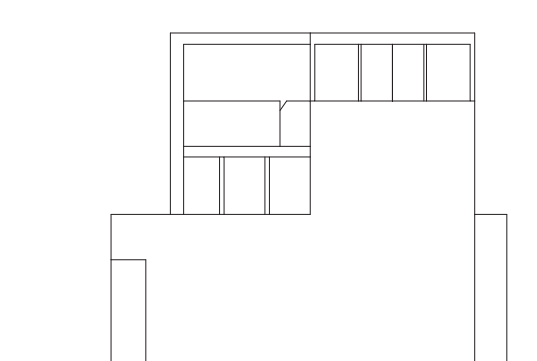
tweede verdieping 1:200



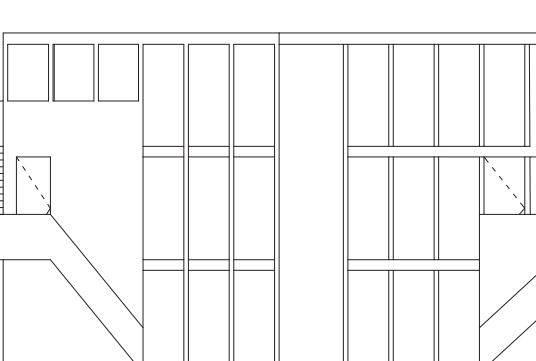
Dakaanzicht 1:200



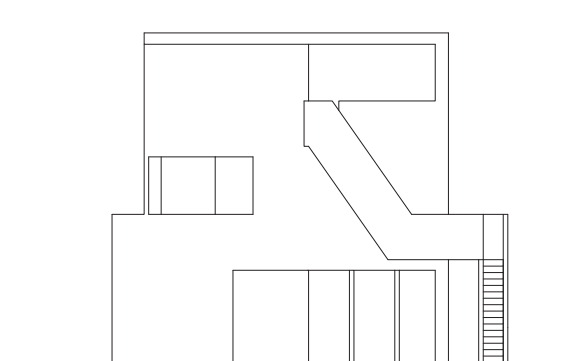
Vooraanzicht 1:200



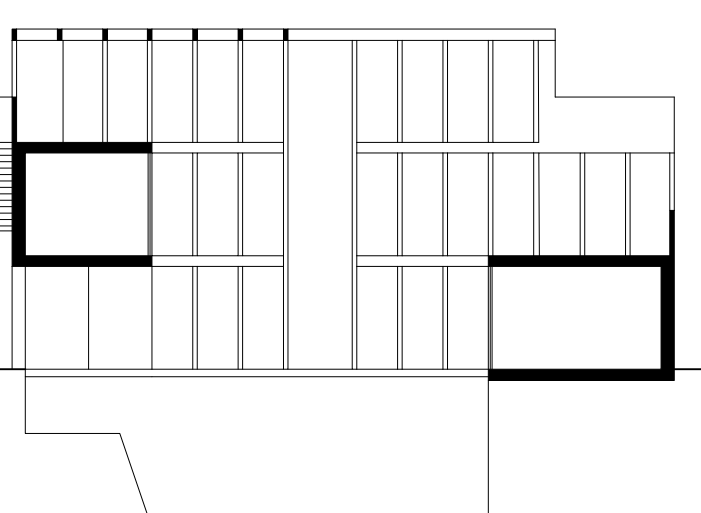
Zijaanzicht 1:200



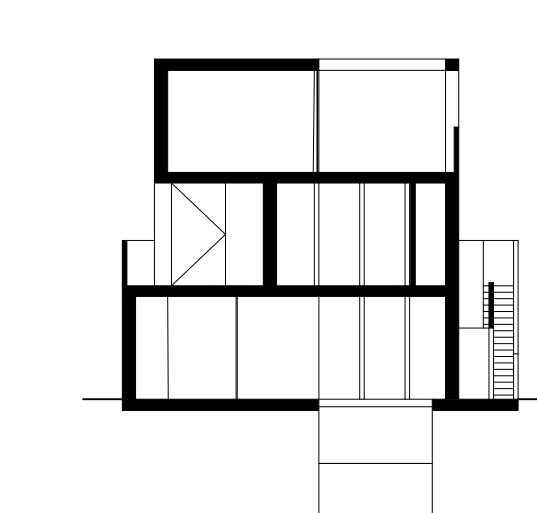
Achteraanzicht 1:200



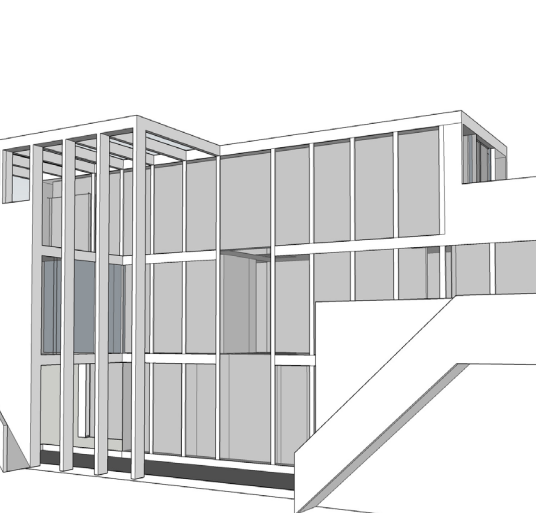
Zijaanzicht 1:200



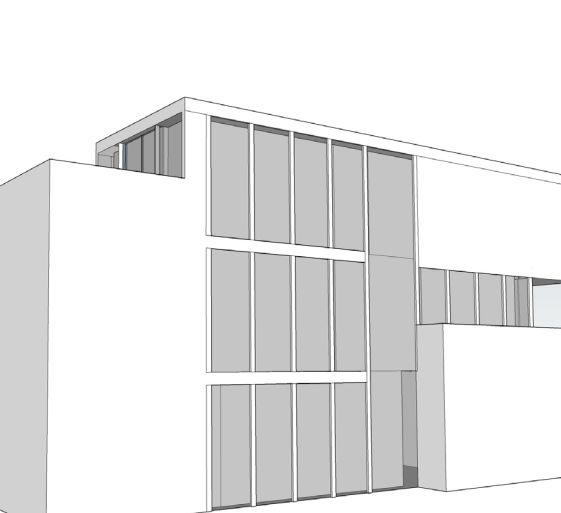
Doorsnede 1:200



Doorsnede 1:200



3D impressie



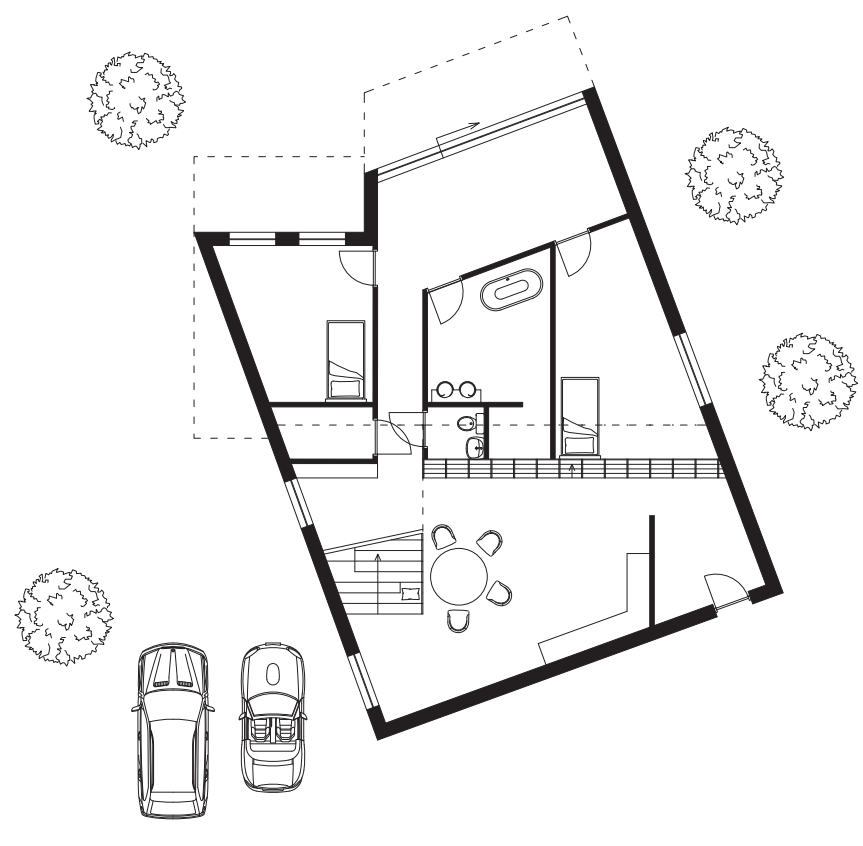
3D impressie

Bookside house / woning met 250 meter aan boekenplanken

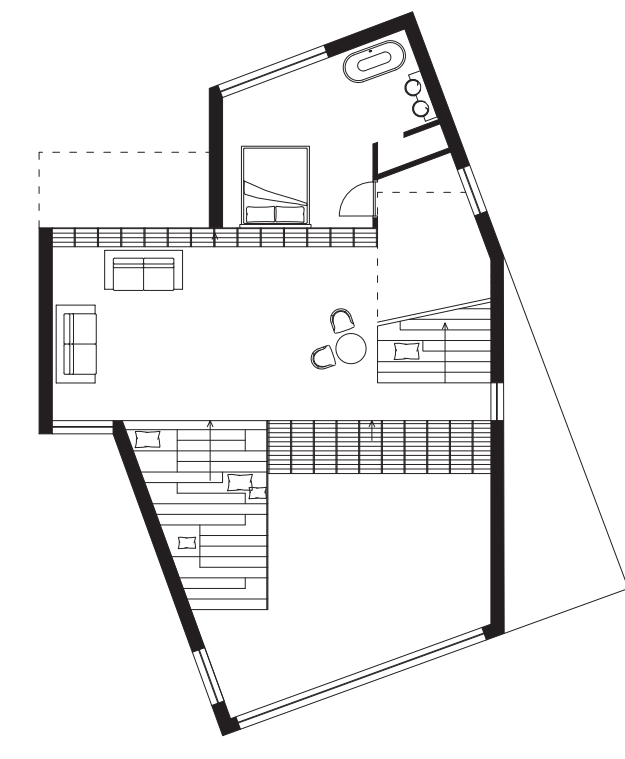
Door de boekenkast in een helling toe te passen zijn alle boeken eenvoudig bereikbaar voor alle gezinsleden. De boekenkast staat als centraal element in het huis en verdeelt het huis hierdoor in een privé en openbaar gedeelte.

Elementair ontwerpen

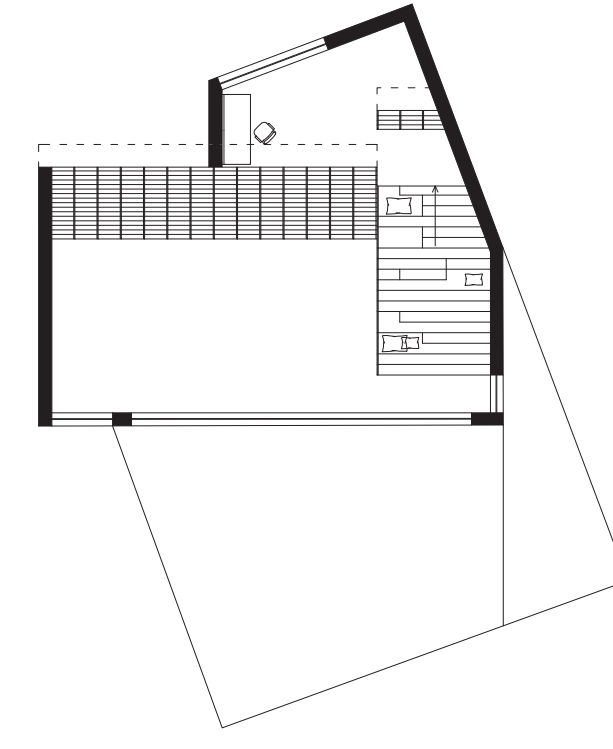
Martijn Ravia



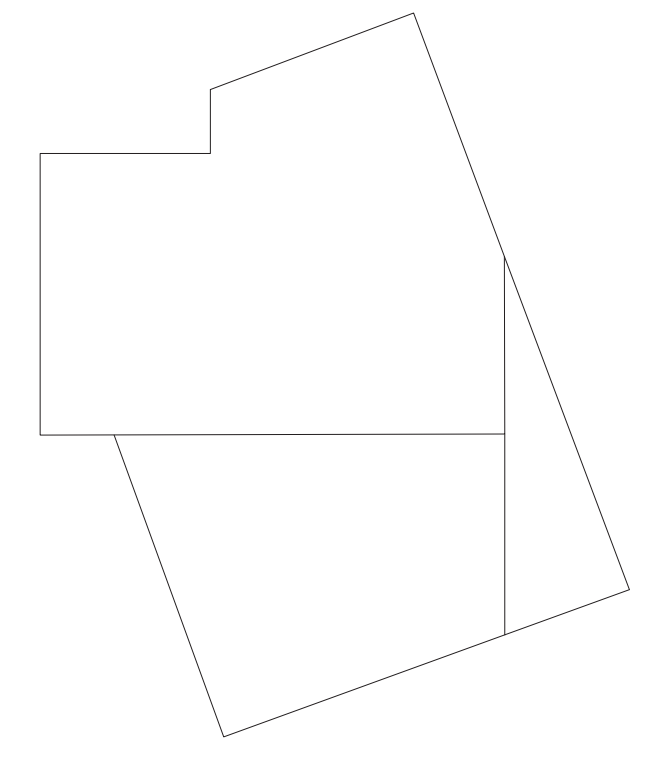
Begane grond 1:200



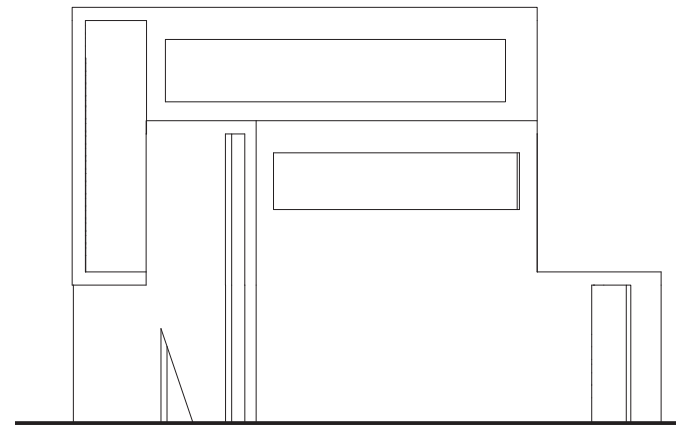
Eerste verdieping 1:200



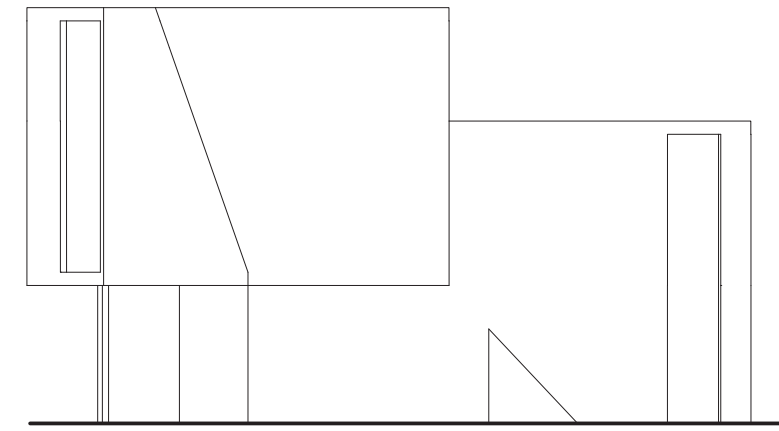
Tweede verdieping 1:200



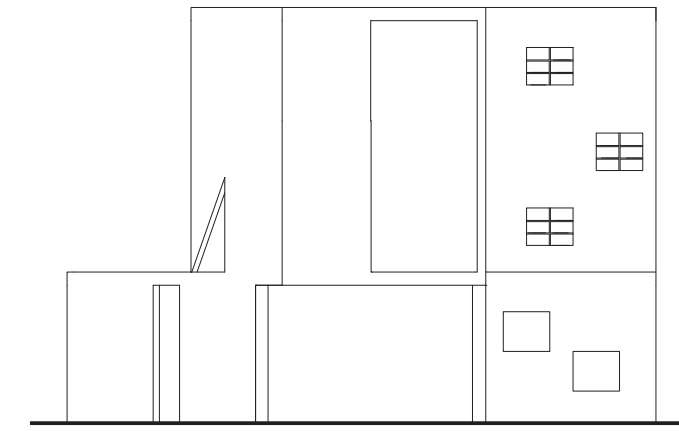
Dakaazicht 1:200



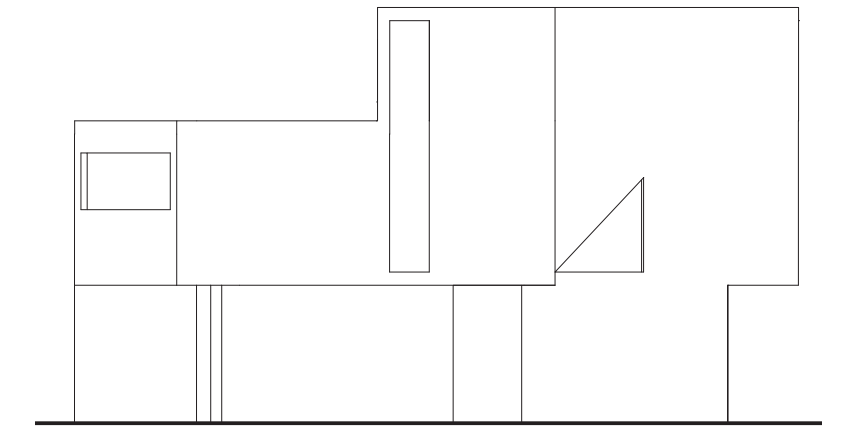
vooraanzicht 1:200



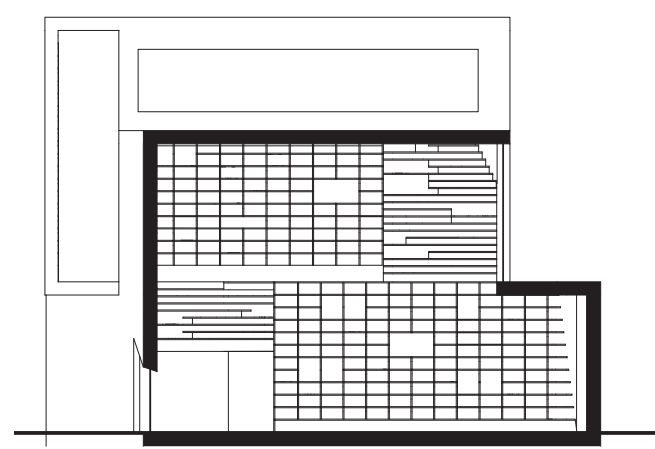
Zijaanzicht 1:200



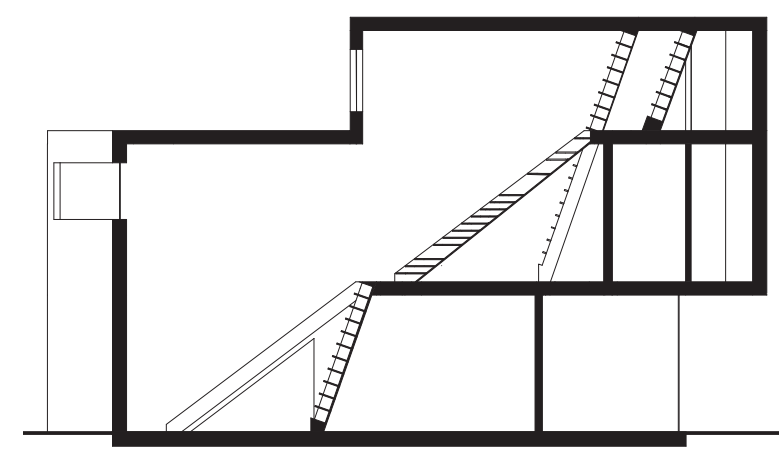
Zijaanzicht 1:200



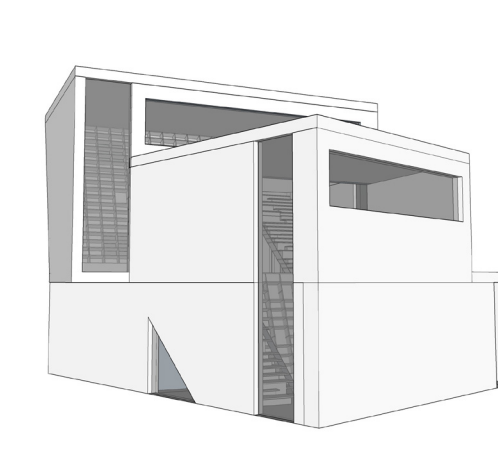
Zijaanzicht 1:200



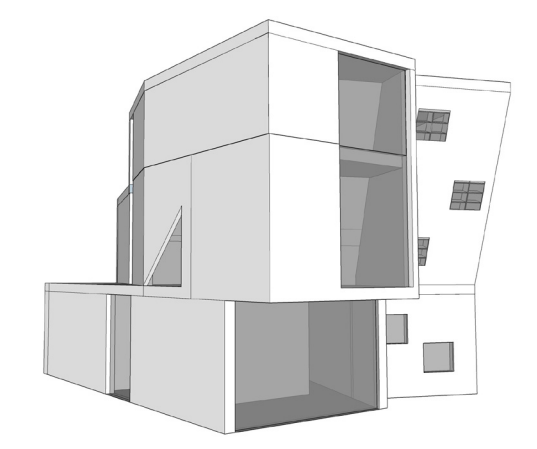
Doorsnede 1:200



Doorsnede 1:200



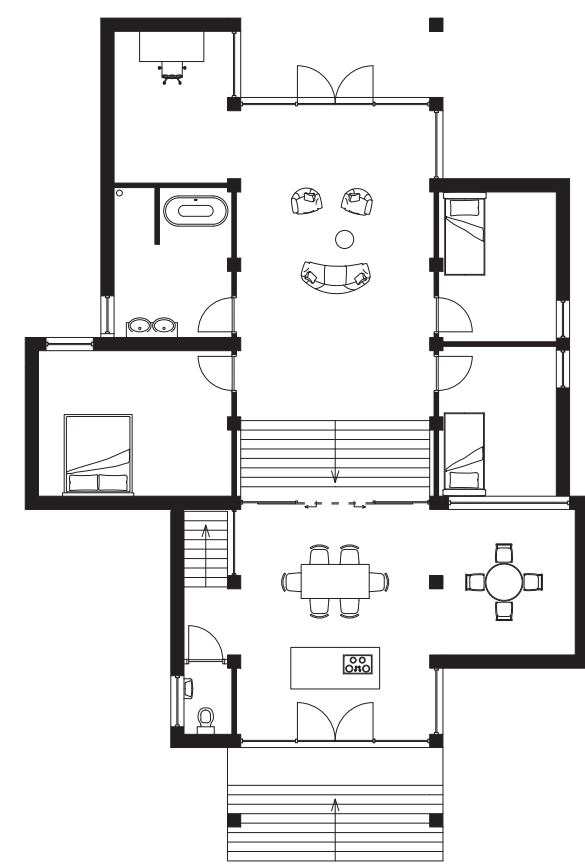
3D impressie



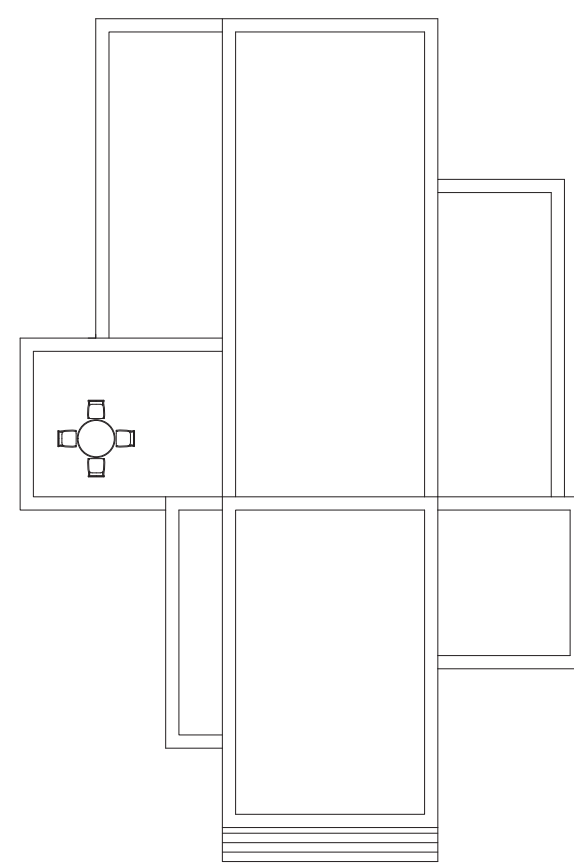
3D impressie

House en suite / woning zonder gangen

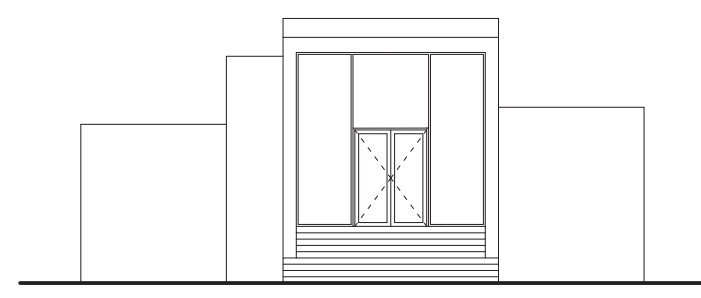
Door de centrale ruimte zijn alle overige ruimtes bereikbaar. Door de verdeling van de centrale ruimte in een voorkamer en achterkamer wordt de privacy van de bewoners gegarandeerd.



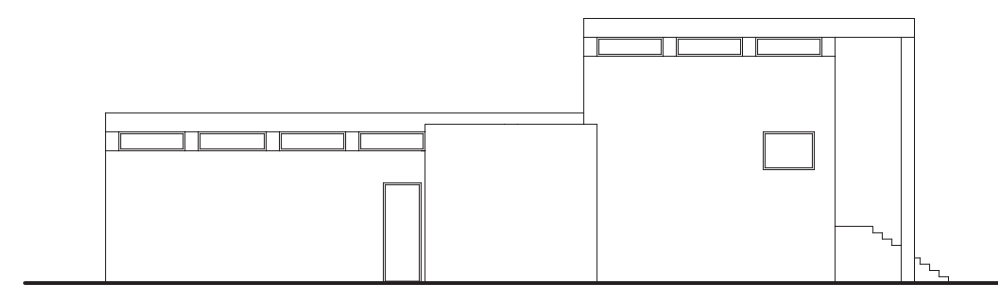
Begane grond 1:200



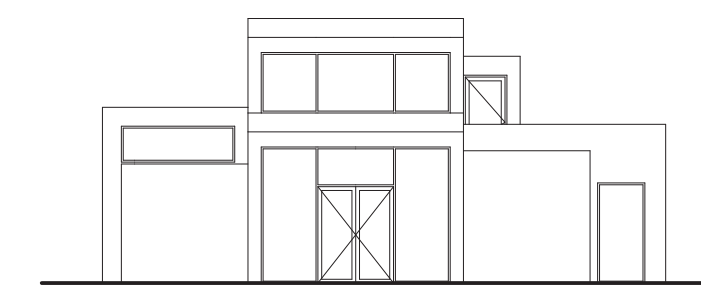
Dakaazicht 1:200



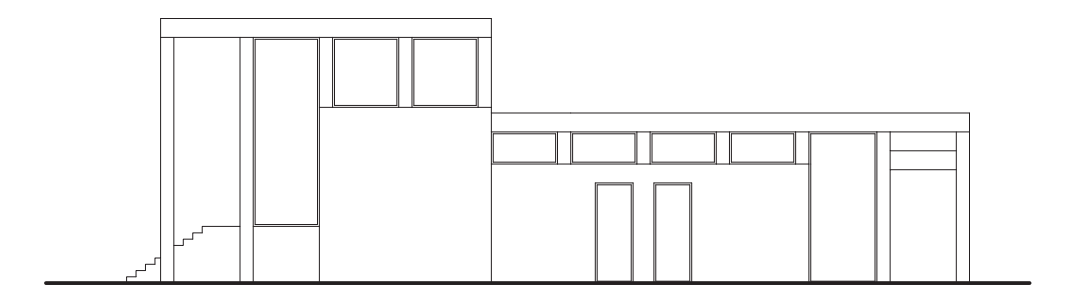
vooraanzicht 1:200



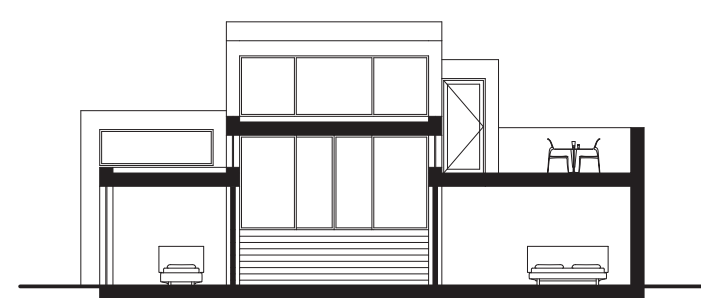
Zijaanzicht 1:200



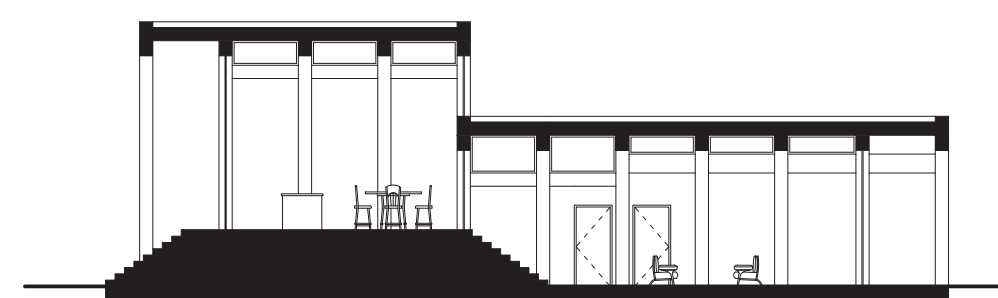
Zijaanzicht 1:200



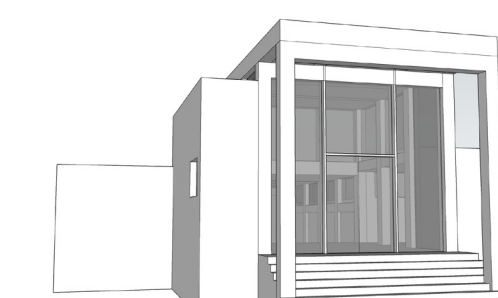
Zijaanzicht 1:200



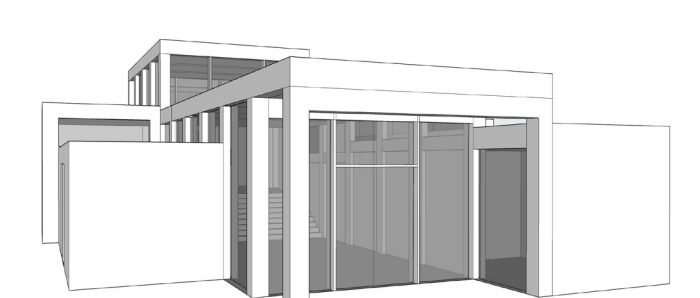
Doorsnede 1:200



Doorsnede 1:200



3D impressie



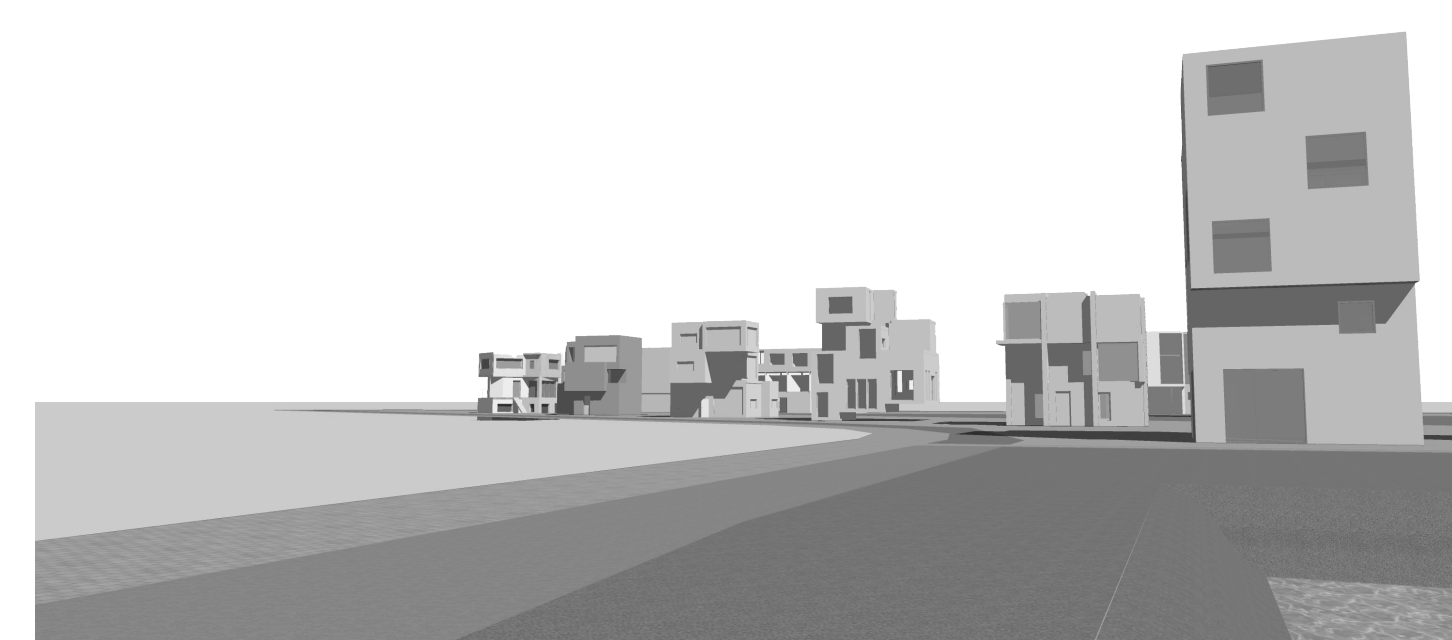
3D impressie

De nieuwe ring van Zierikzee / stedenbouwkundig plan

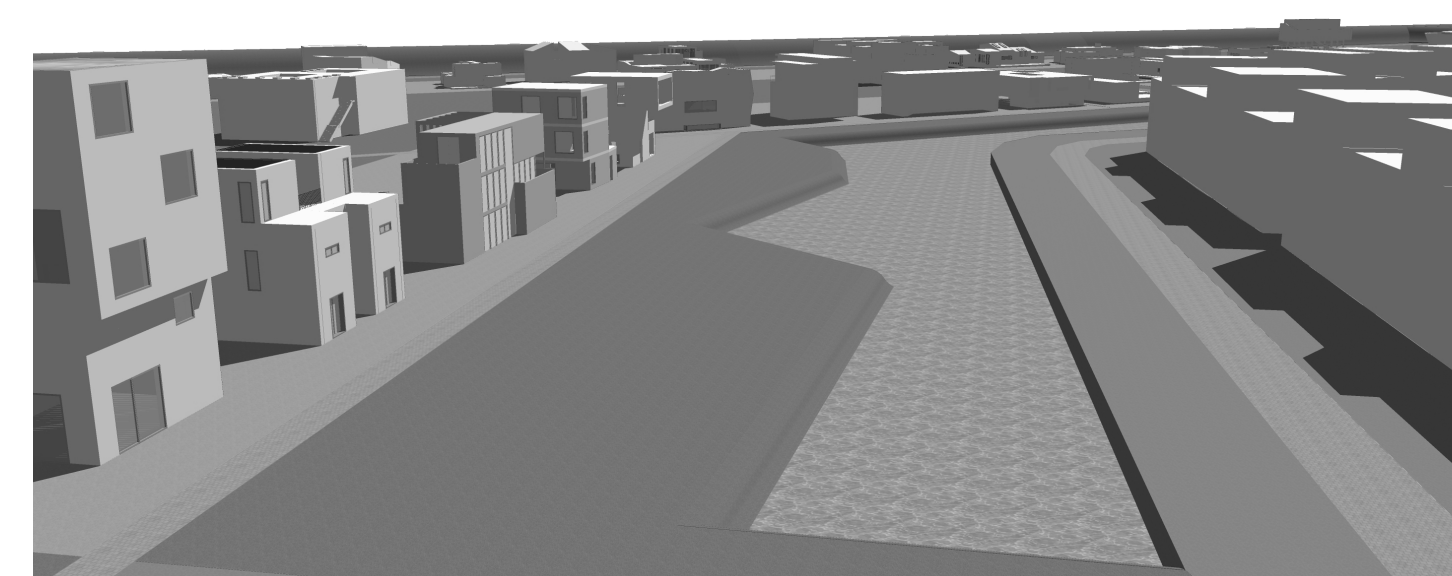
Het gebied wordt aan de hand van huidige structuren binnen het gebied onderverdeeld in 4 deelgebieden met allemaal hun eigen kenmerken en woning. De deelgebieden worden met elkaar verbonden doormiddel van de straten die woningen bevatten met een soortgelijke vormtaal.



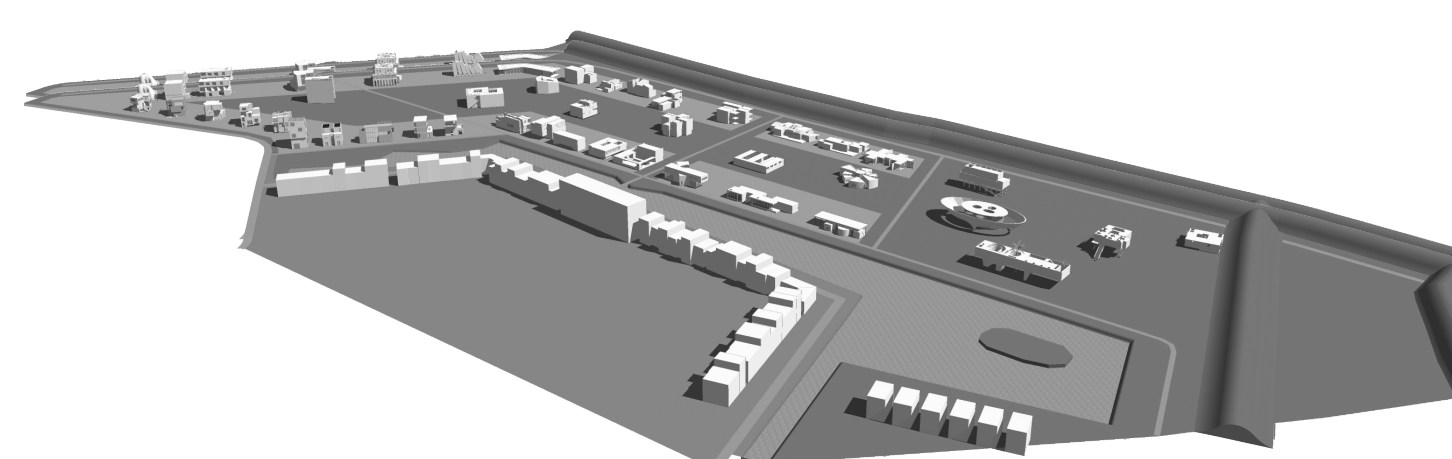
Stedenbouwkundigplan 1:2000



3D impressie



3D impressie



3D impressie