



30 jaar | The basic mining community is realized. This means that the experiment started and the community is growing bigger. The participants are using smart miners and the central miningpool facility is programmed with the essential systems and facilities. Aside from this the bottom-up approach grows in the identity of the NDSM-Werf and it becomes more recognized by the municipality.

Year	2018	2020	2022	2024	2026	2028	2030
Phase	Phase 1	Phase 2	Phase 3	Phase 4	Phase 5	Phase 6	Phase 7
Area (ha)	10	20	30	40	50	60	70
Population	100	200	300	400	500	600	700
Employment	50	100	150	200	250	300	350
Energy (MWh)	1000	2000	3000	4000	5000	6000	7000
Water (m³)	10000	20000	30000	40000	50000	60000	70000

20 jaar | The Miningpool community is mature and consists of someone's families are part of the urban fabric and identity of the NDSM-Werf. The concept is proven and is being used as an example for other projects. Because the miningpool community is mature additional program is needed and the demand for similar locations grows as the economy becomes more based around crypto currency.



50 jaar | Mining crypto turns into business ordinary and based upon the principles in this plan, new developments will start throughout the city, experimenting with different program and changing the city landscape. A sustainable normal electric grid based around the West-Porter help historic heritage around the city to be more tolerant and efficient. Forming a new trend within architecture and urban design.

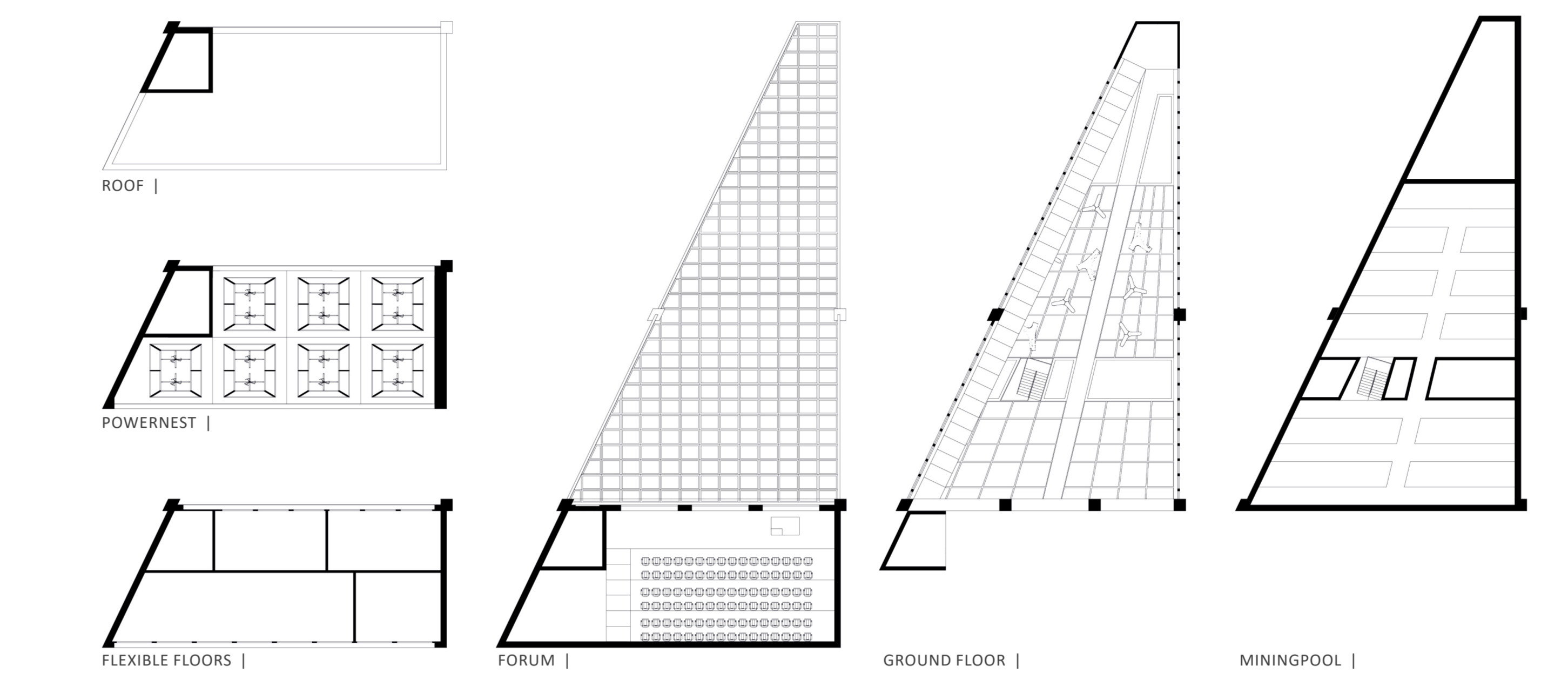


URBAN PLAN FOR OVER 20 YEARS |

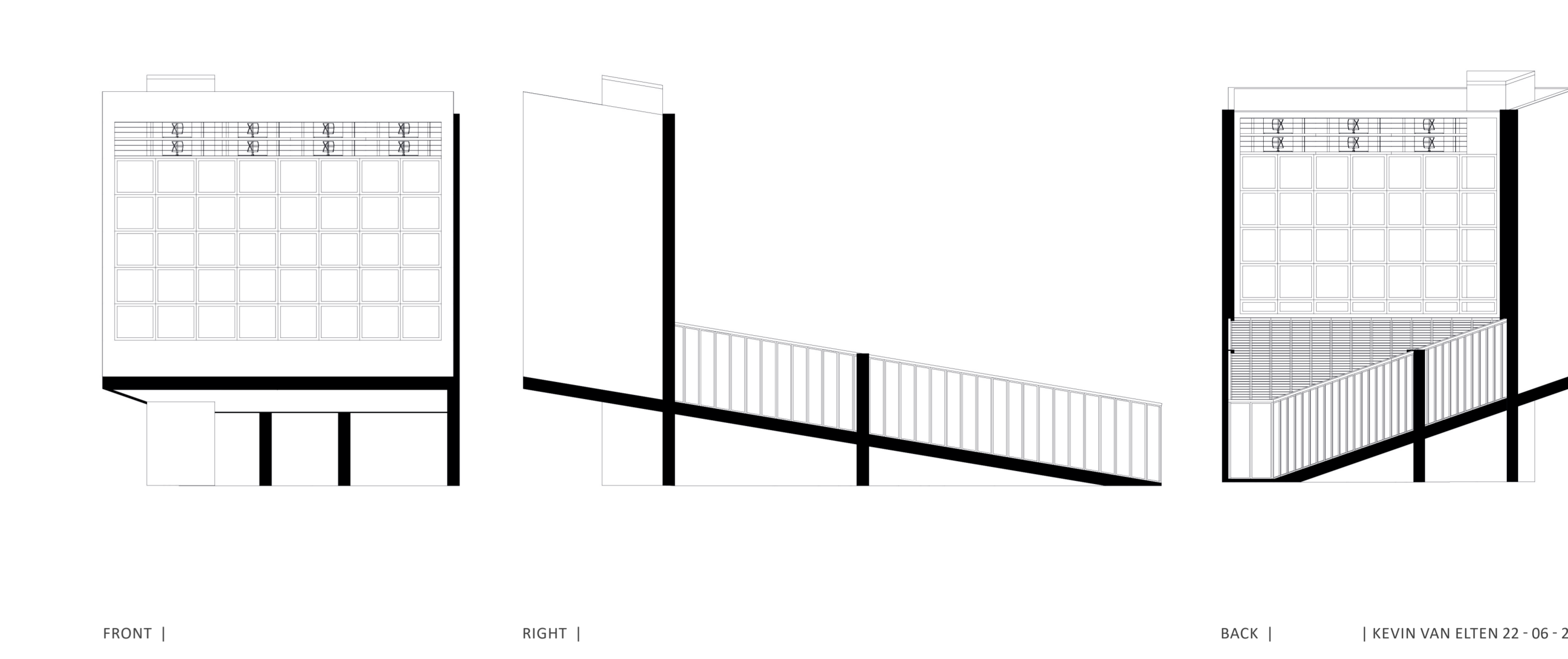
KEVIN VAN ELTEN 22-06-2018



SECTION RESIDENTIAL TYPOLOGIES |



SECTION MININGPOOL TYPOLOGIE |



FRONT | RIGHT | BACK | KEVIN VAN ELTEN 22-06-2018

# MININGPOOL COMMUNITY |

**Miningpool community |** With more and more people starting to compete on the miners market, the necessity to do this the most efficient way becomes vital to make the endeavor worthwhile. This is manageable for the centralized miningpools owned by corporations but impossible for the decentralized miningpools managed by the people. These private initiatives also need a more centralized approach. The Mining Community offers this.

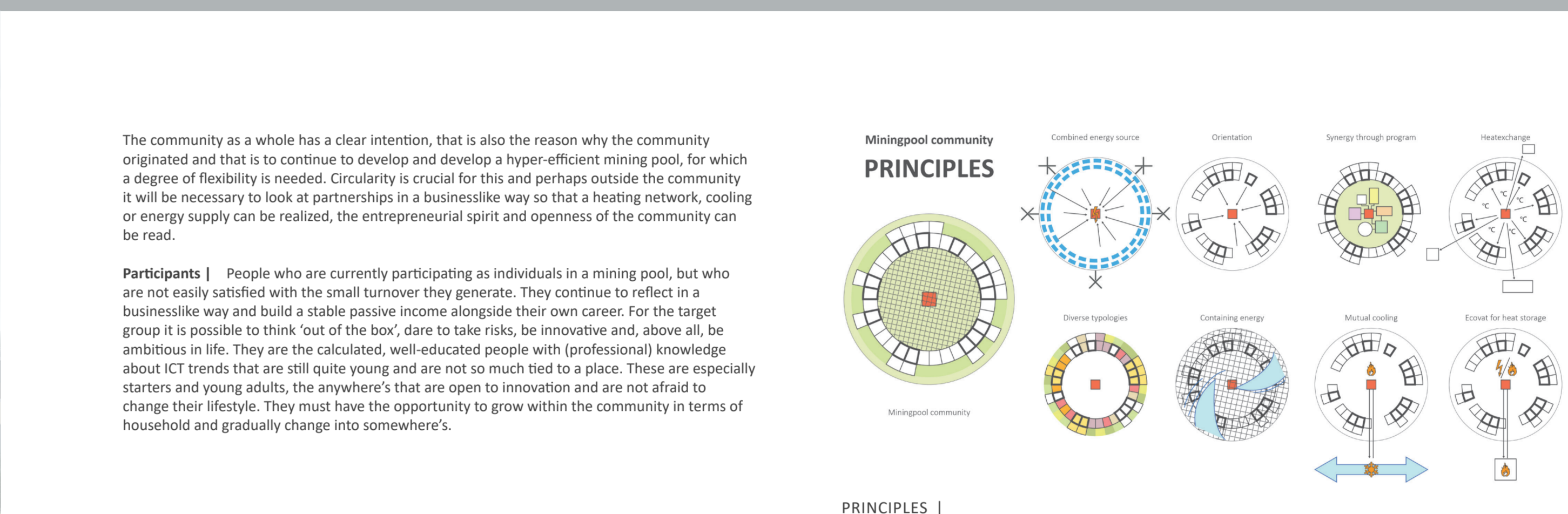
**Miningpool |** With the advance of the blockchain technology and the associated cryptocurrencies, there is an ever increasing demand for mining processes. We see that both corporations and privately owned mining setups try to benefit from this trend. As such a organization you have two clear objectives, computing power and cool storage. Here lies the problem with these endeavors, the centralized and circular approach of a corporate investor solves these objectives. However the current decentralized miningpool owned by private industries solves only one side of the problem, the computing power. The second issue about dampening the footprint of mining is unaddressed. The mining pool itself also has a negative factor. It is a very anonymous platform, participants are an IP address and are socially totally closed off from each other.

FUTURE PLANNING |

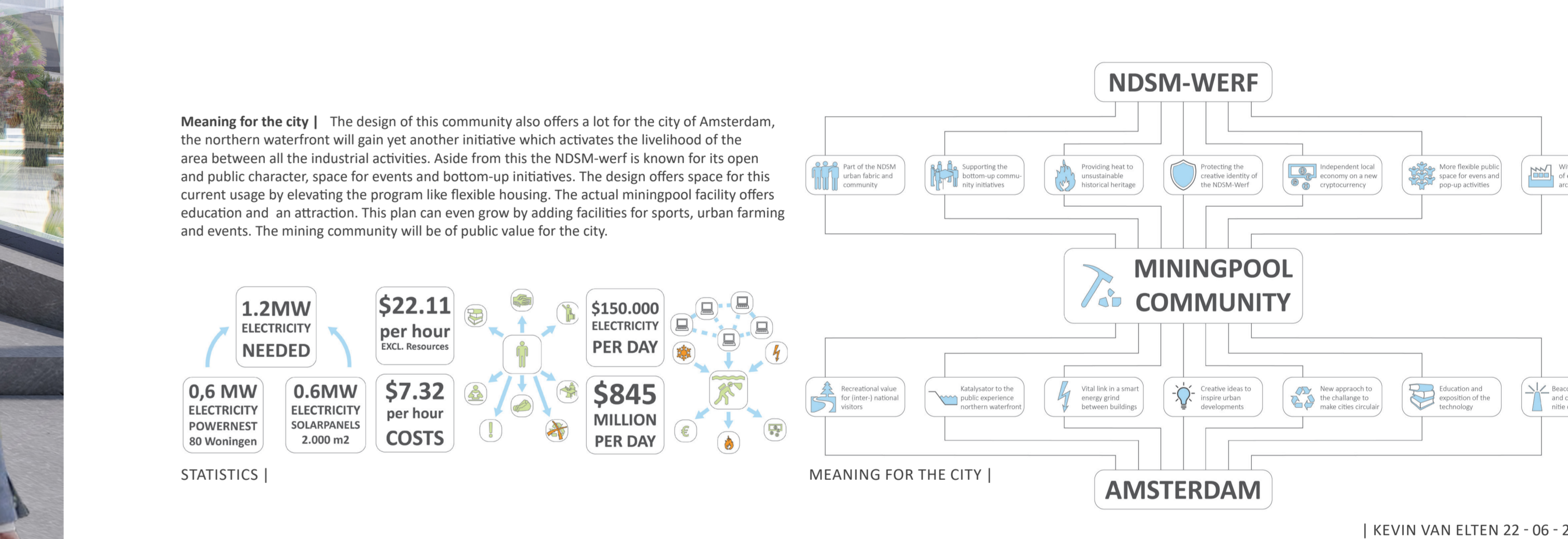
PUBLIC EVENTS |



LIVELY WATERFRONT |



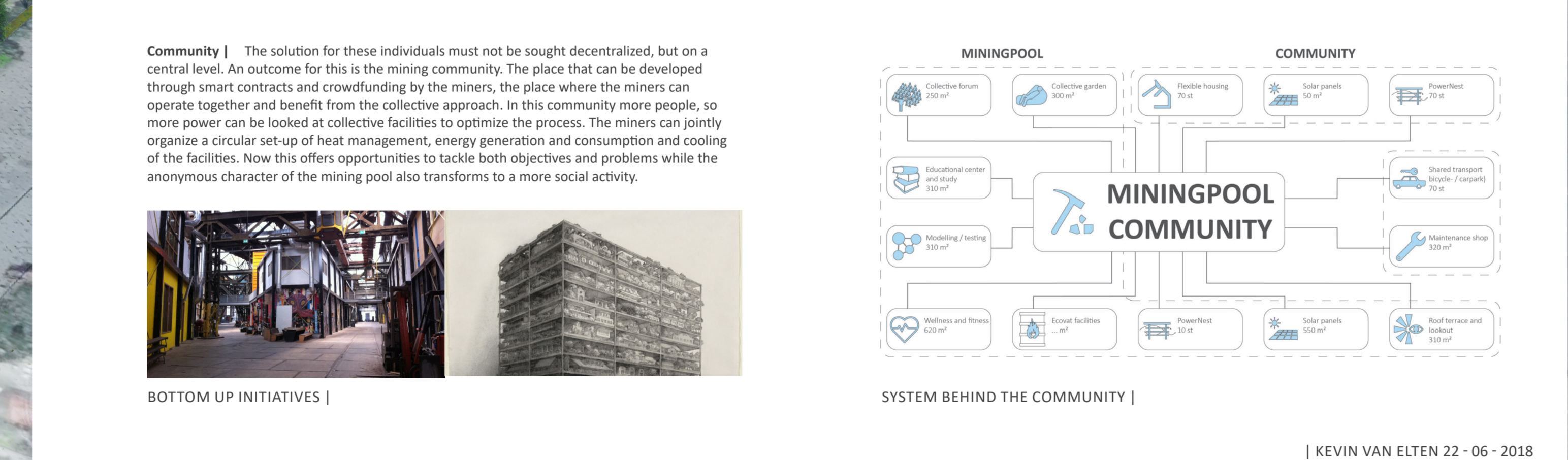
MININGPOOL INTERIEUR |



MEANING FOR THE CITY | AMSTERDAM | KEVIN VAN ELTEN 22-06-2018



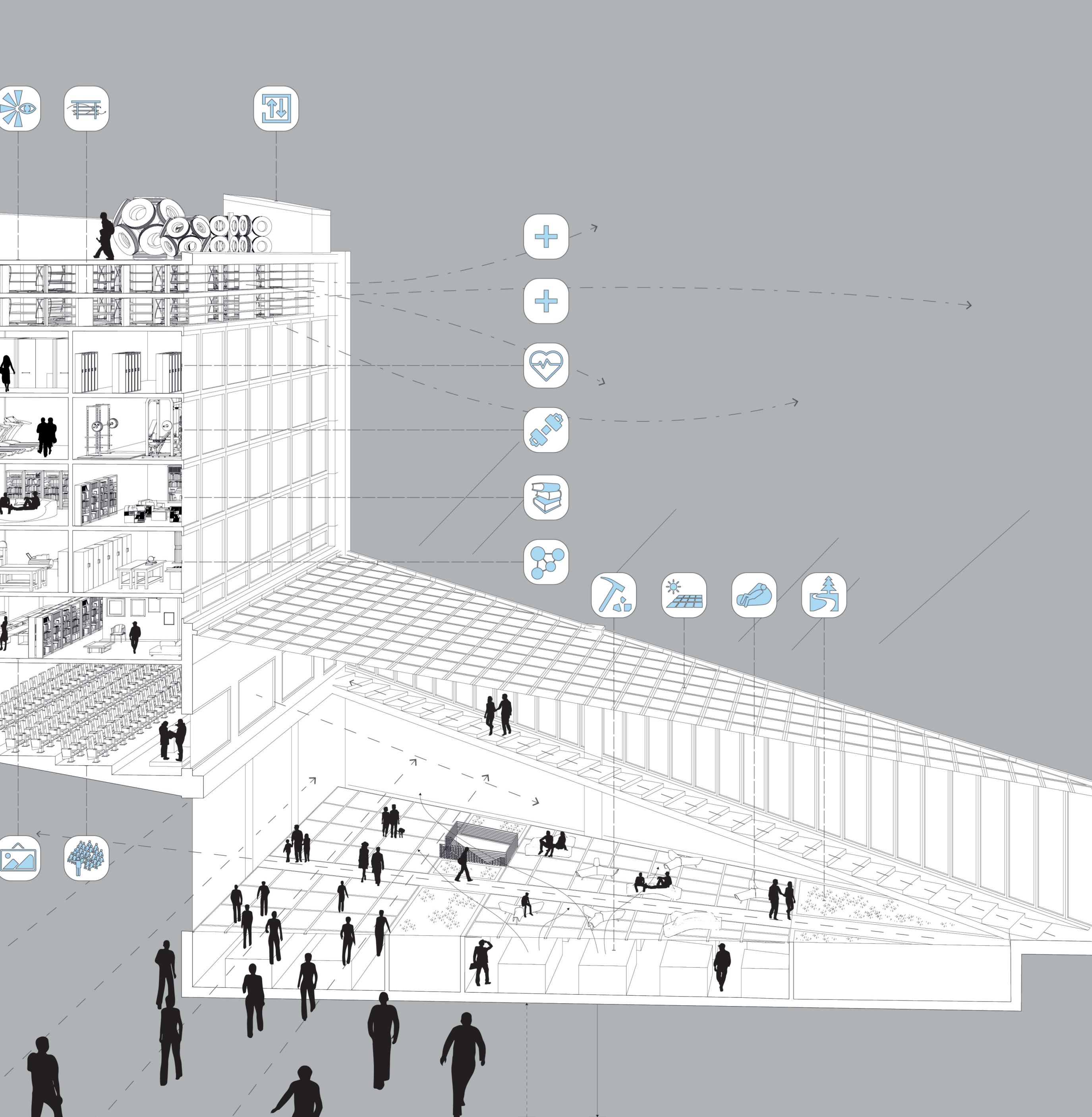
BIRD'S EYE VIEW |



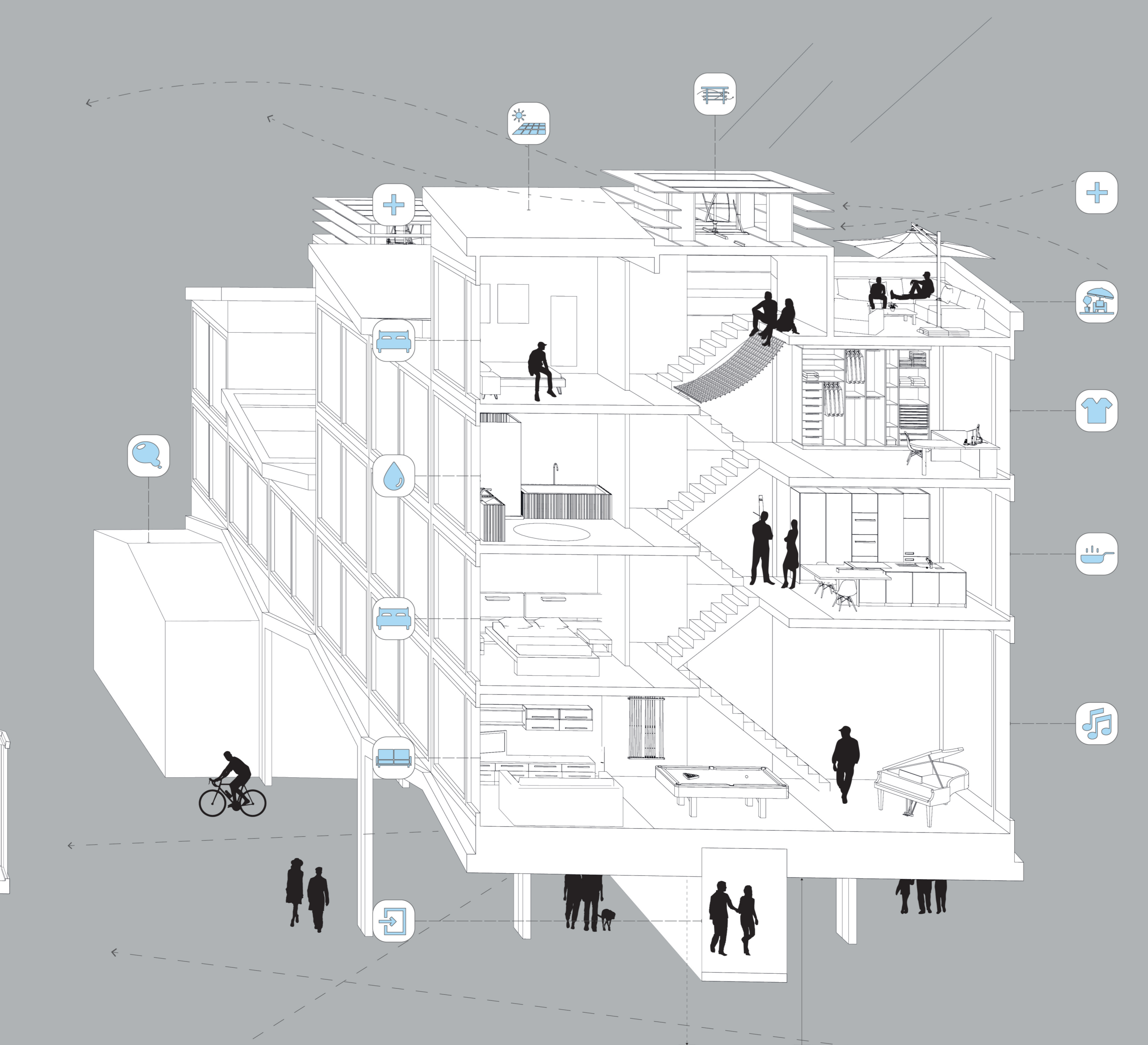
BOTTOM UP INITIATIVES |

SYSTEM BEHIND THE COMMUNITY |

KEVIN VAN ELTEN 22-06-2018

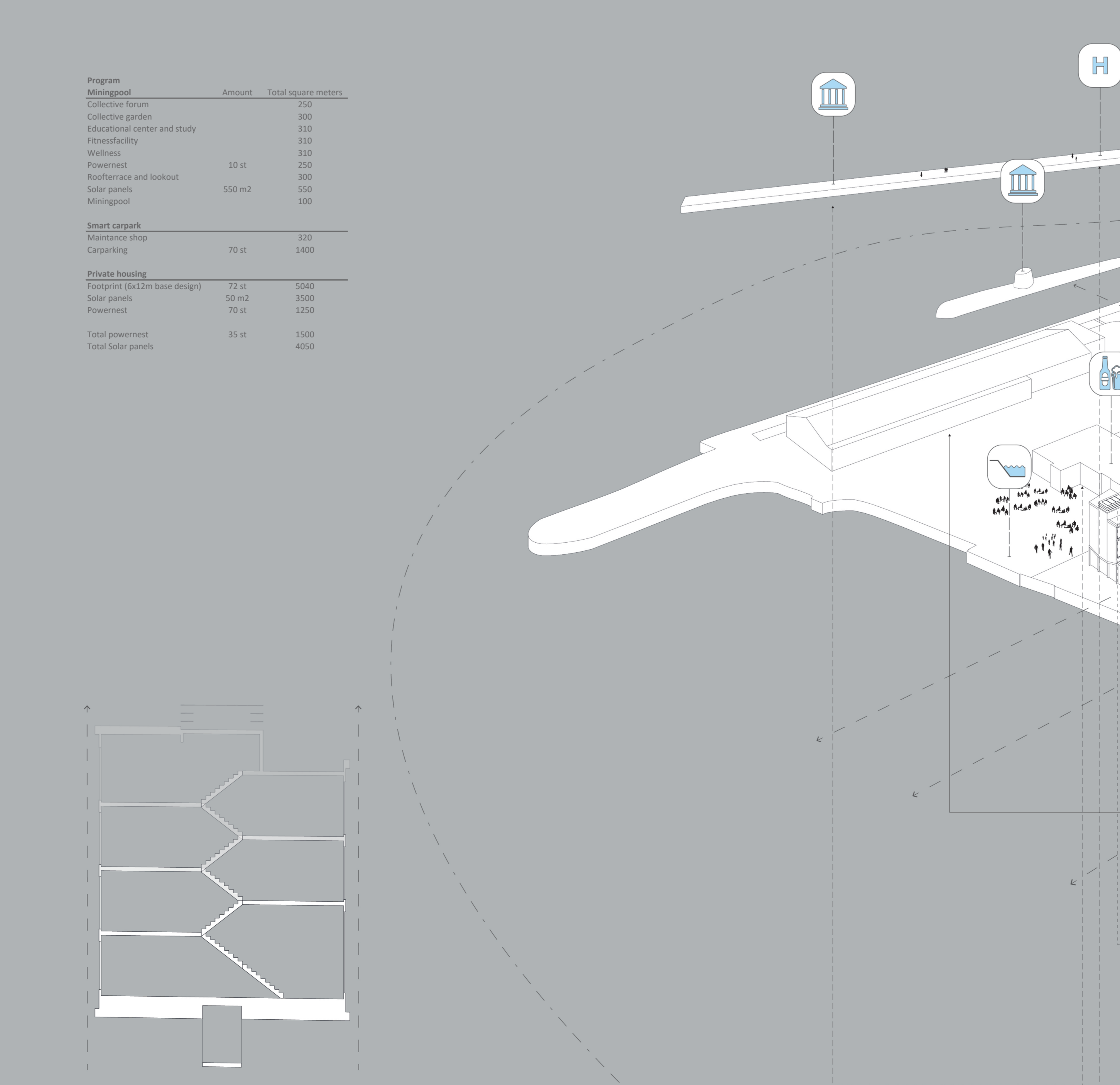


ARCHITECTURAL ISOMETRIC SCHEME - MININGPOOL |

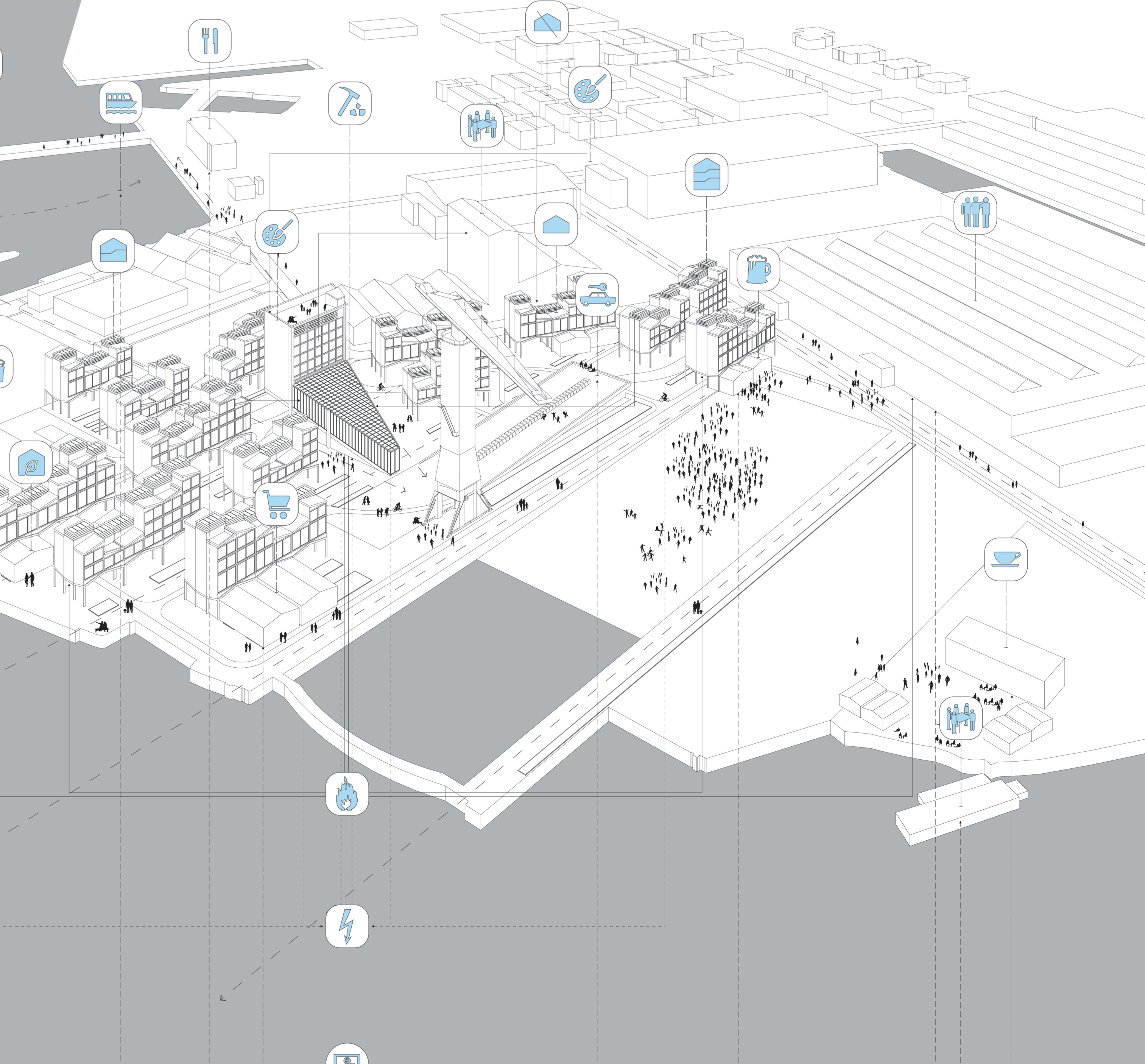


ARCHITECTURAL ISOMETRIC SCHEME - DWELLINGS |

KEVIN VAN ELTEN 22-06-2018



URBAN PLAN ISOMETRIC SCHEME - SYNERGY |



URBAN PLAN ISOMETRIC SCHEME - SYNERGY | KEVIN VAN ELTEN 22-06-2018

Program	Amount	Total (approx. million)
Minerage	200	200
Collective garden	300	300
Manufacture space and study	200	200
Flexibility	200	200
Workshop	200	200
Playground	100	100
Recreation and leisure	200	200
Real estate	100	100
Minerage	100	100
Smart layout	300	300
Maintenance	70	140
Cracking	70	140
Phase housing	72	144
Business (B&B) design	50	100
Site plans	50	100
Investment	70	140
Total investment	20	100
Total site plans	70	140