

# IL NUOVO BLOCCO URBANO

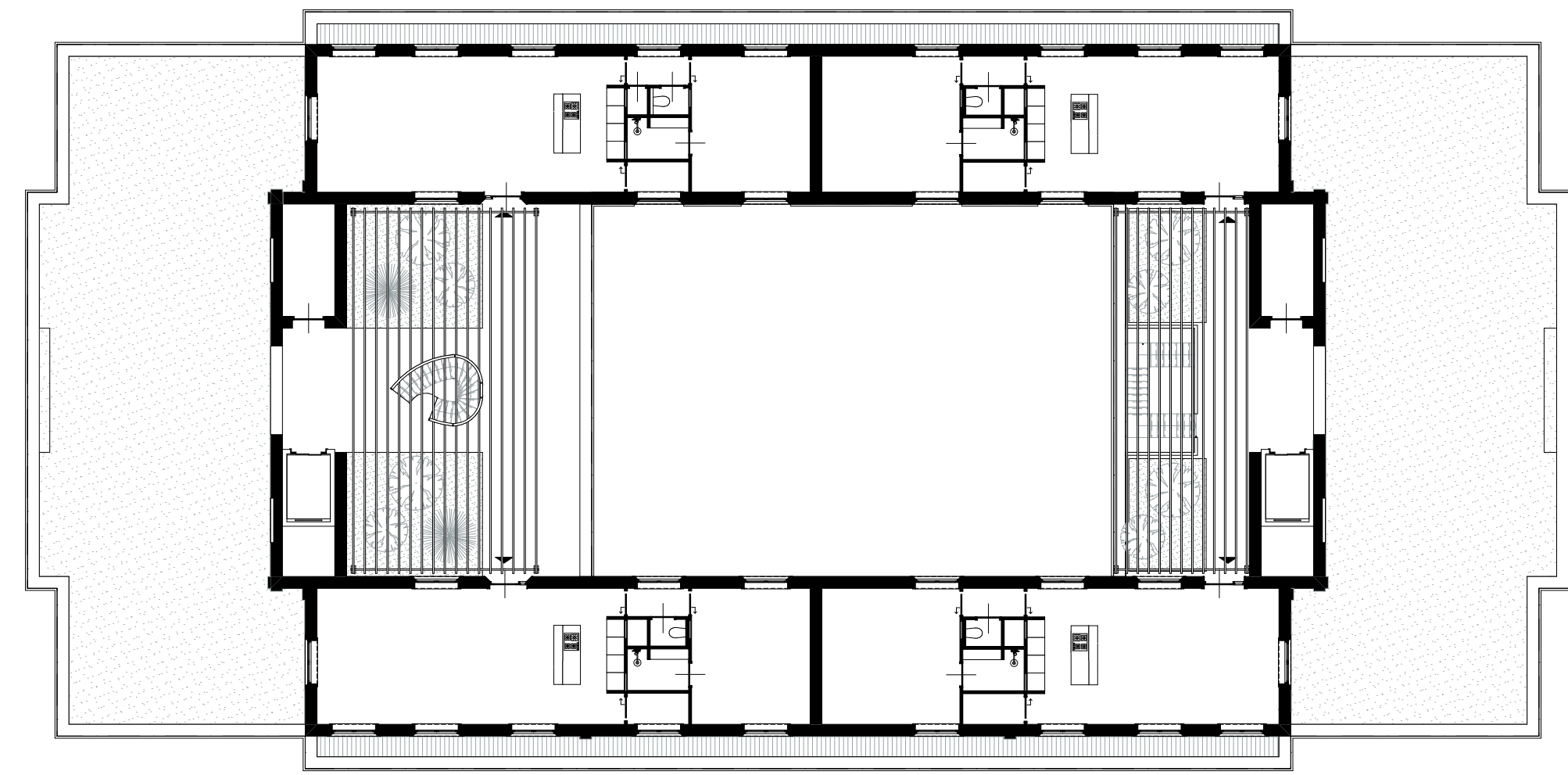
The flexibility of the Neapolitan palazzo typology translated into a residential building suitable for various target groups and where the plinth distinguishes itself in function in several aspects.

The Neapolitan City Block  
DESIGN | RESIDENTIAL BUILDING

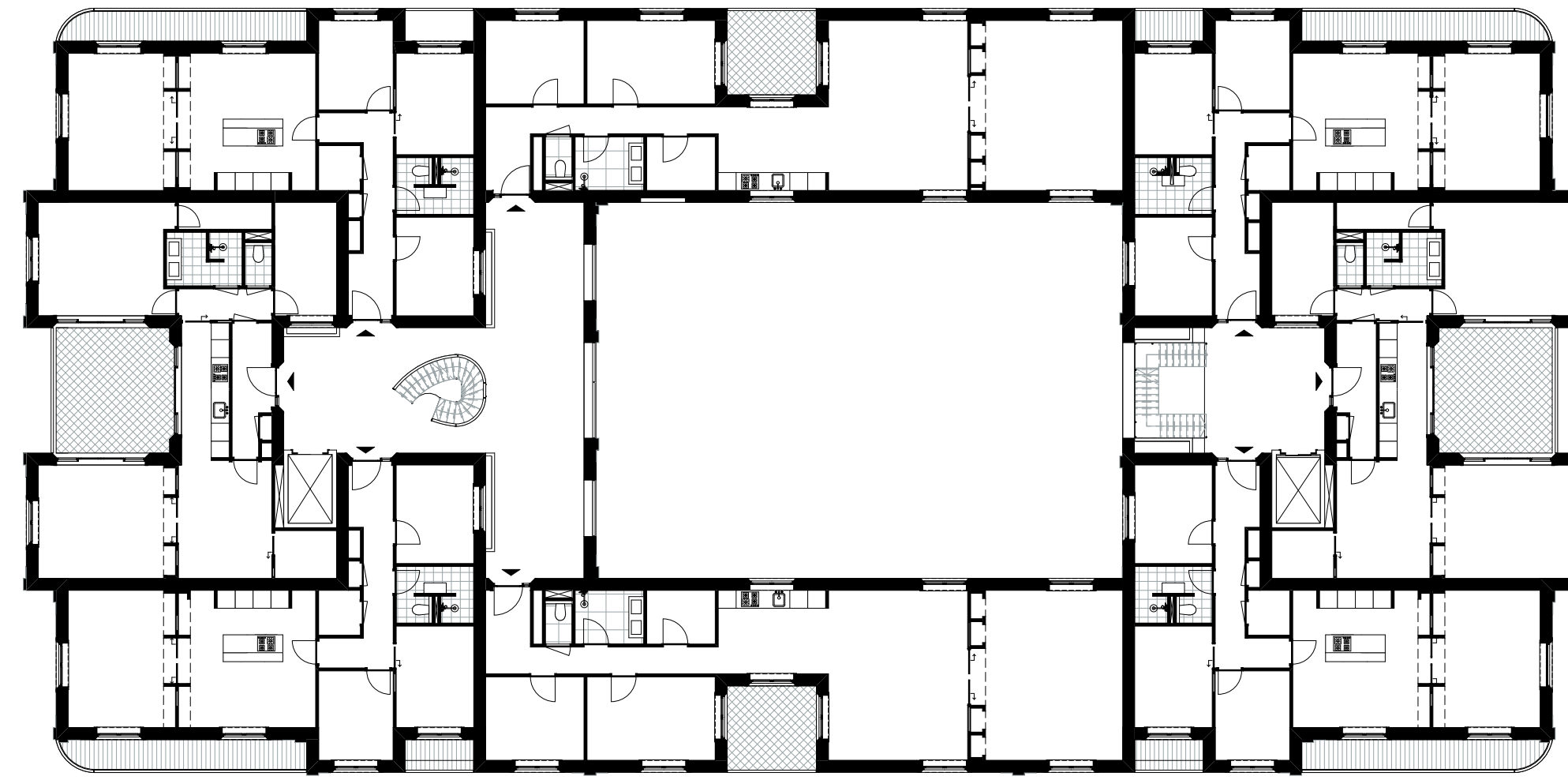
1:200, 1:500, 1:100, 1:250  
Architect: 3rd floor Architecture  
in Lucht



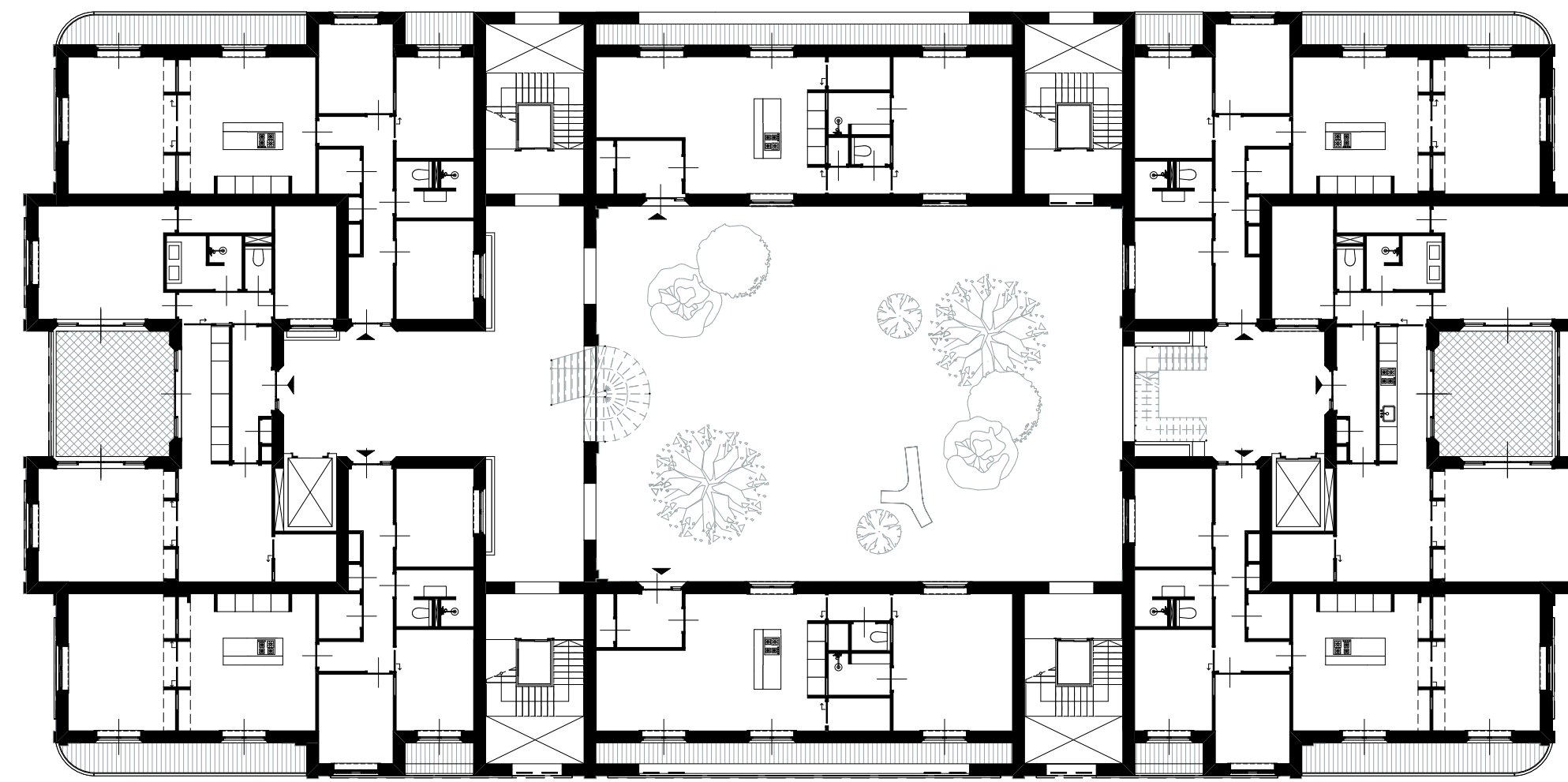
NAPELS



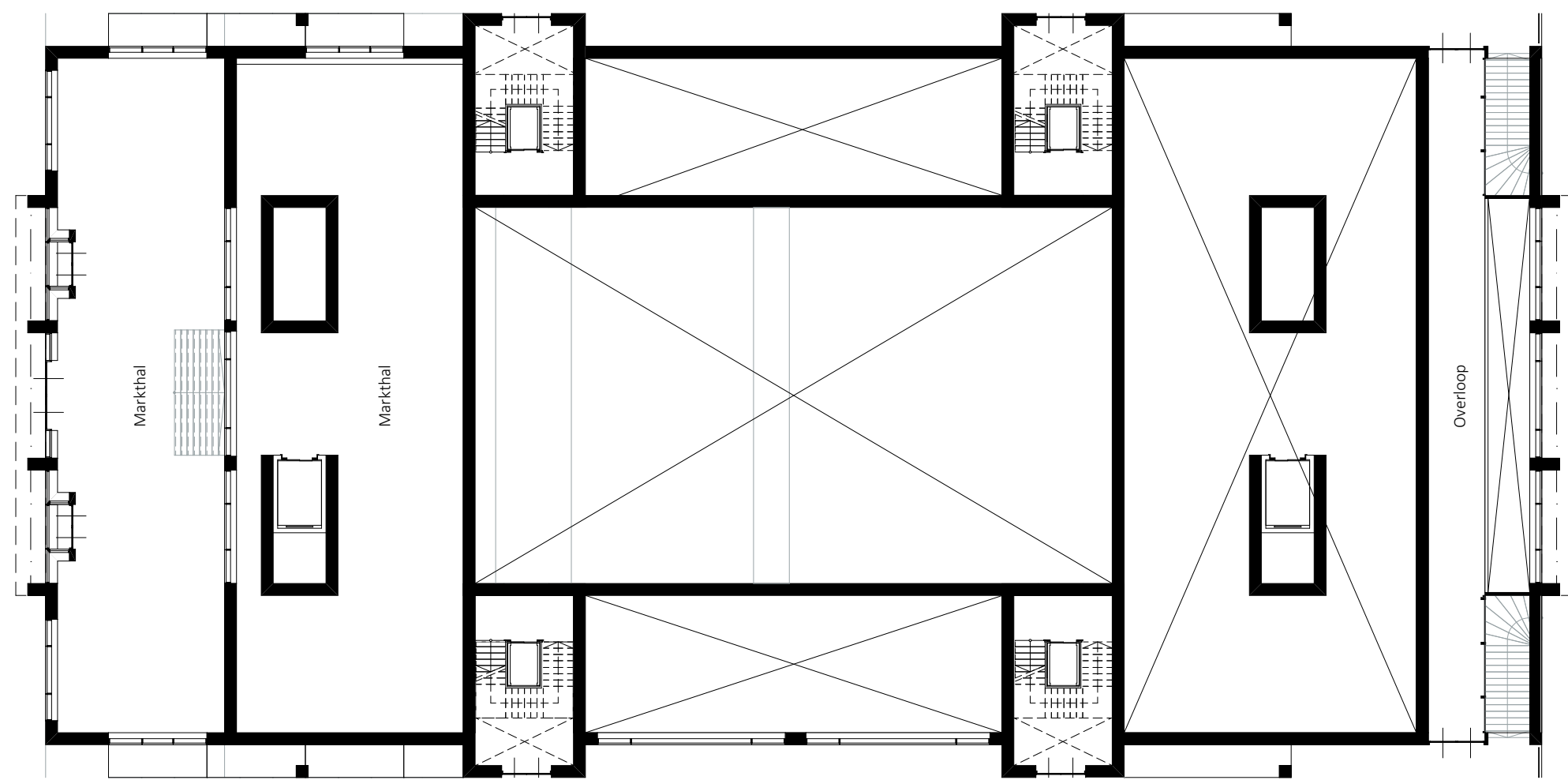
Dakters | dakappartementen



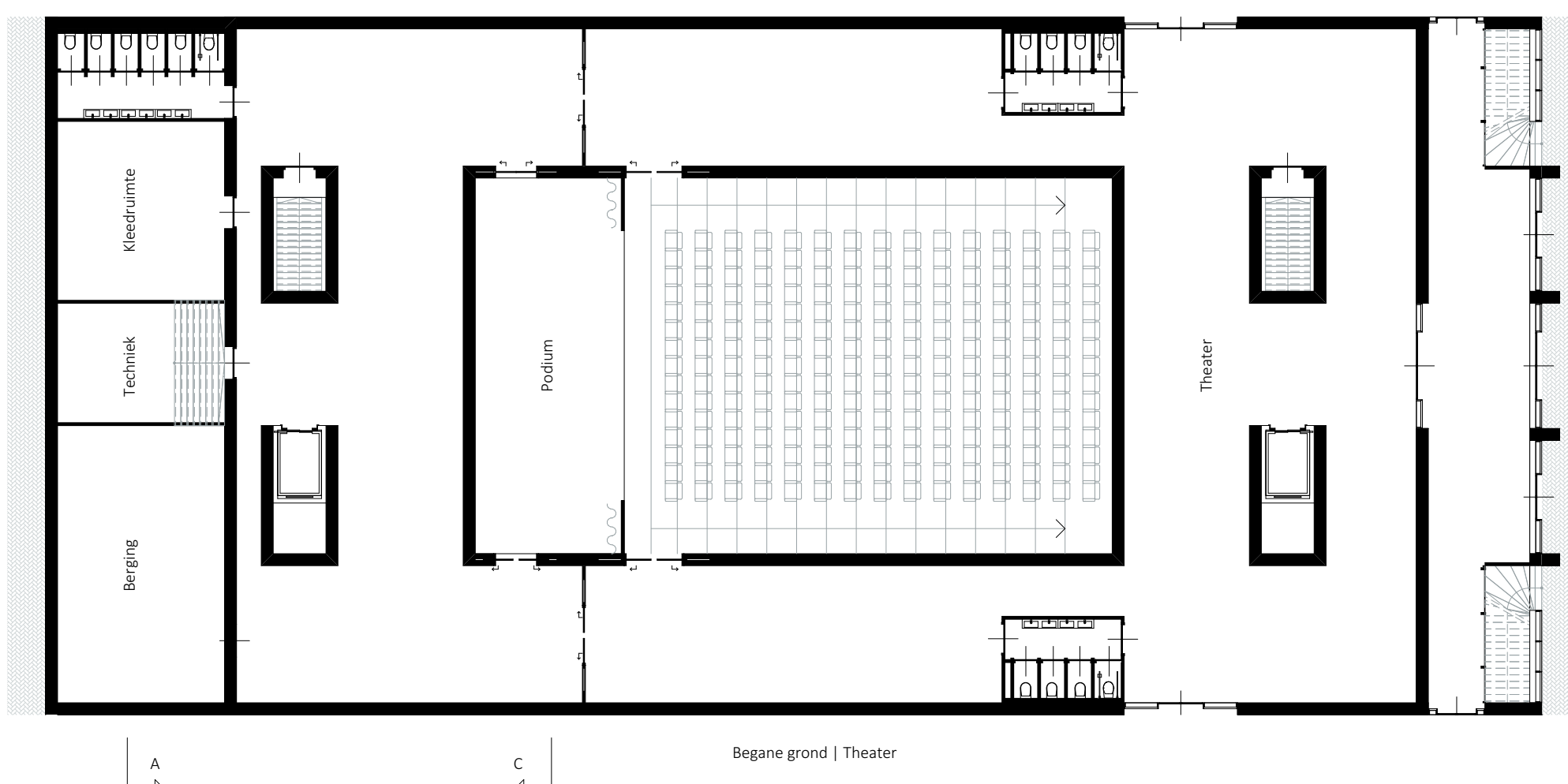
Woonlag 2-3-4-5



Woonlag 1



Stege niveau - Markthal



Begane grond | Theater



Voorgevel Via Toledo



Zijgevel



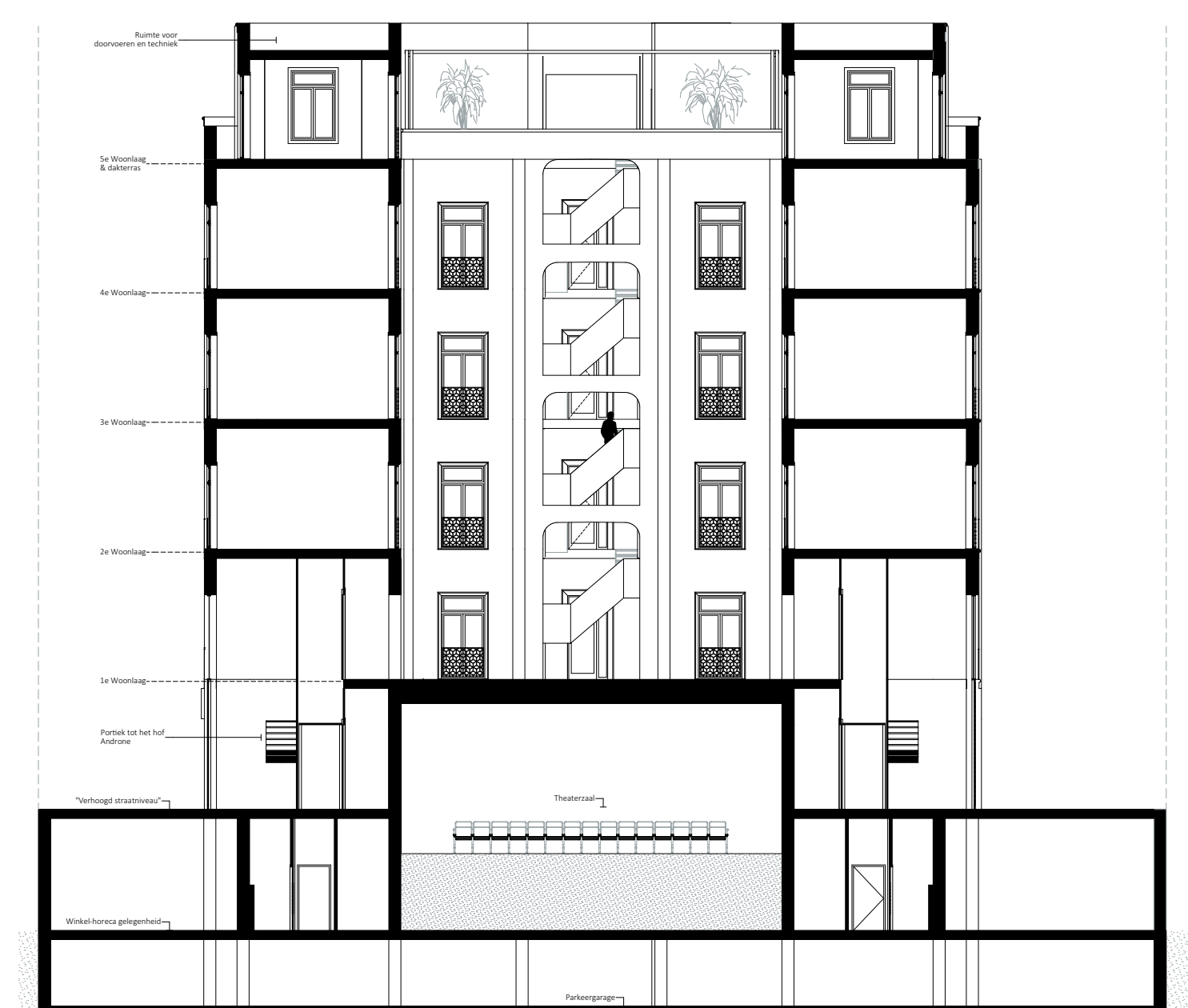
Achtergevel Via Lunga del Ghetto



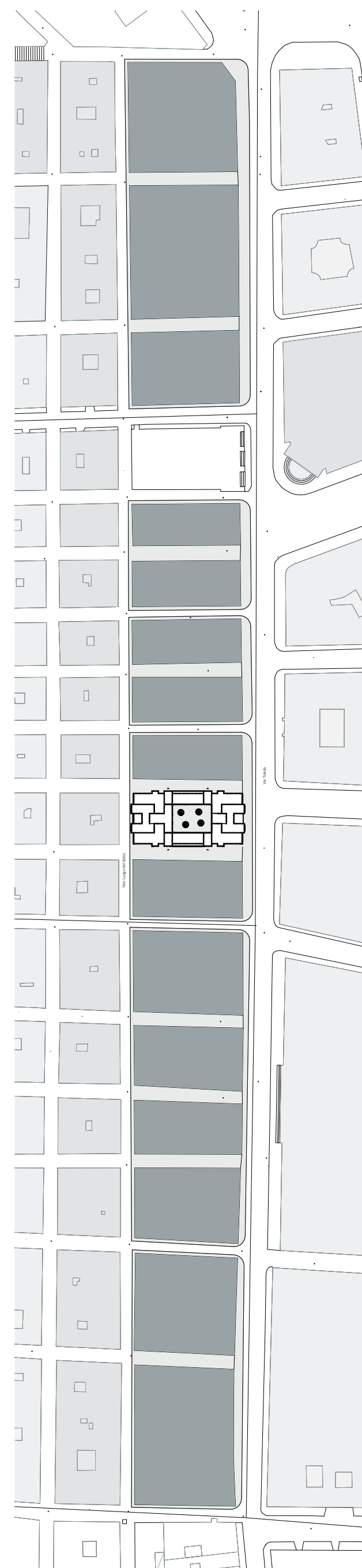
Doornede AA



Doornede B-B

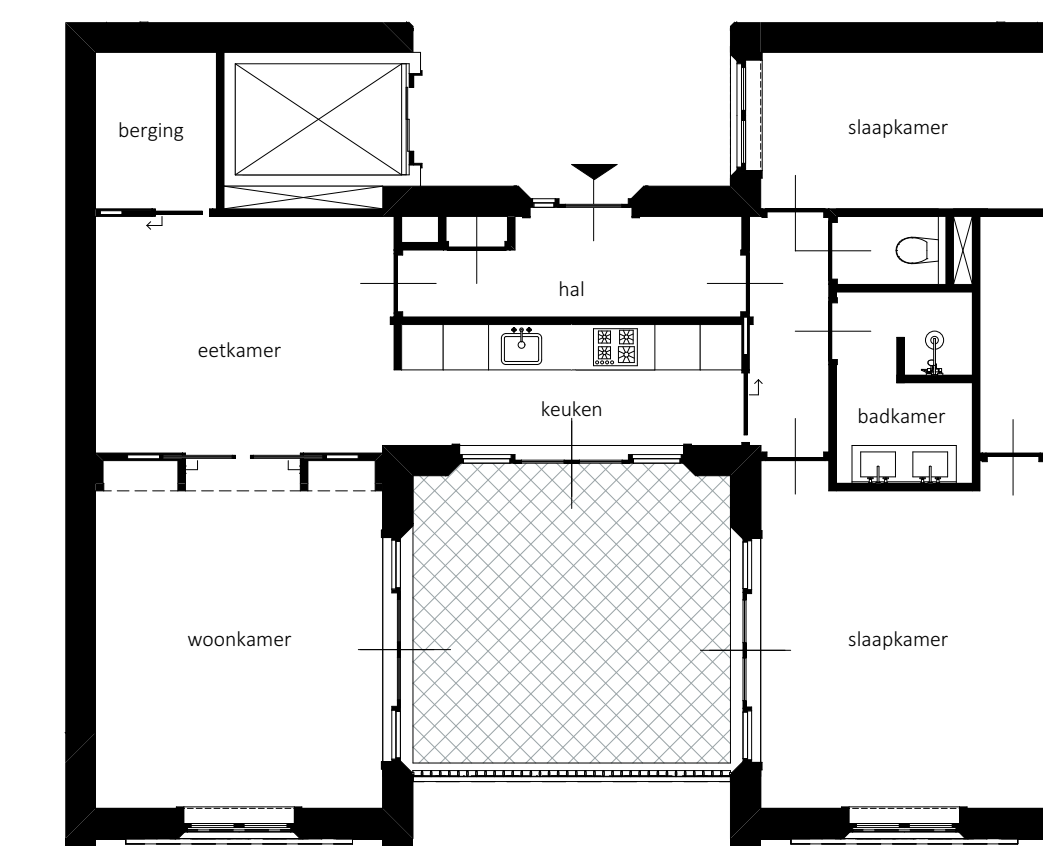


Doornede C-C



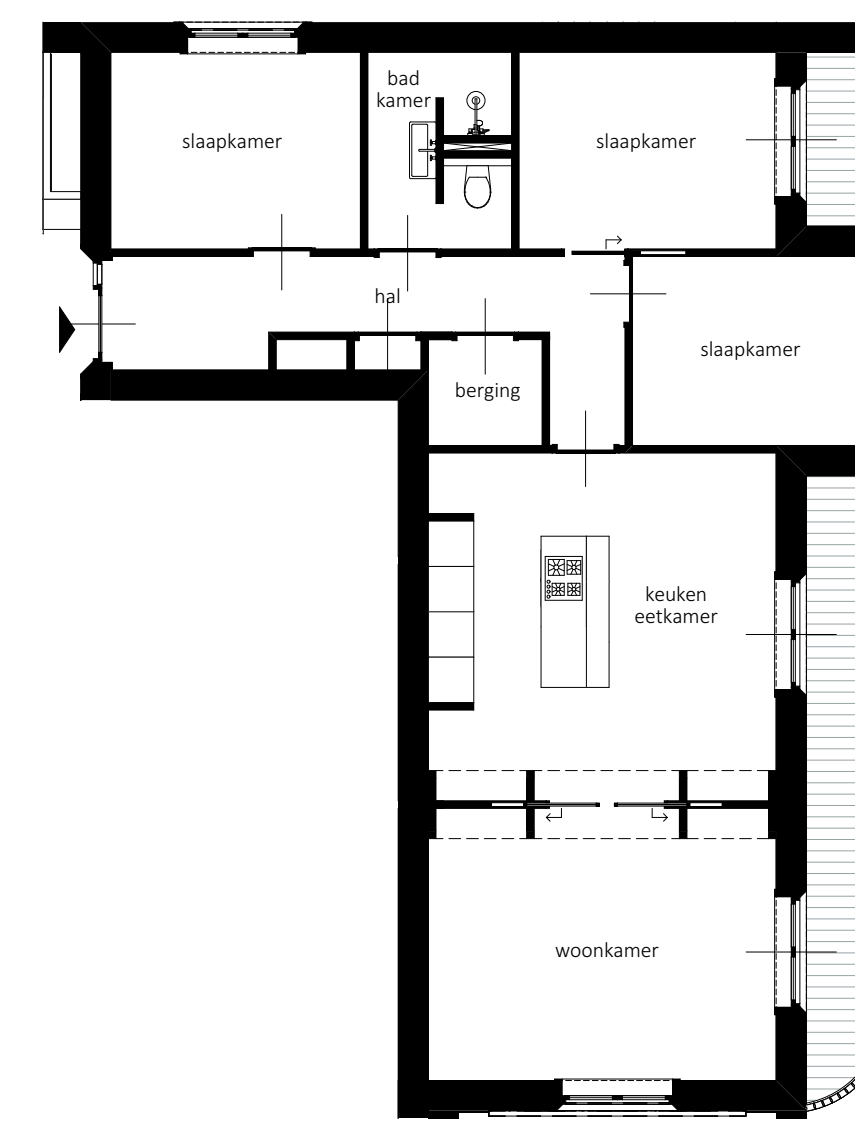
Situatie plangebied

Oppeening: 100m² appartement  
ruimten georganiseerd rondom centrale loggia "buitenkamer"  
v2 - 2-3 persoonswooning

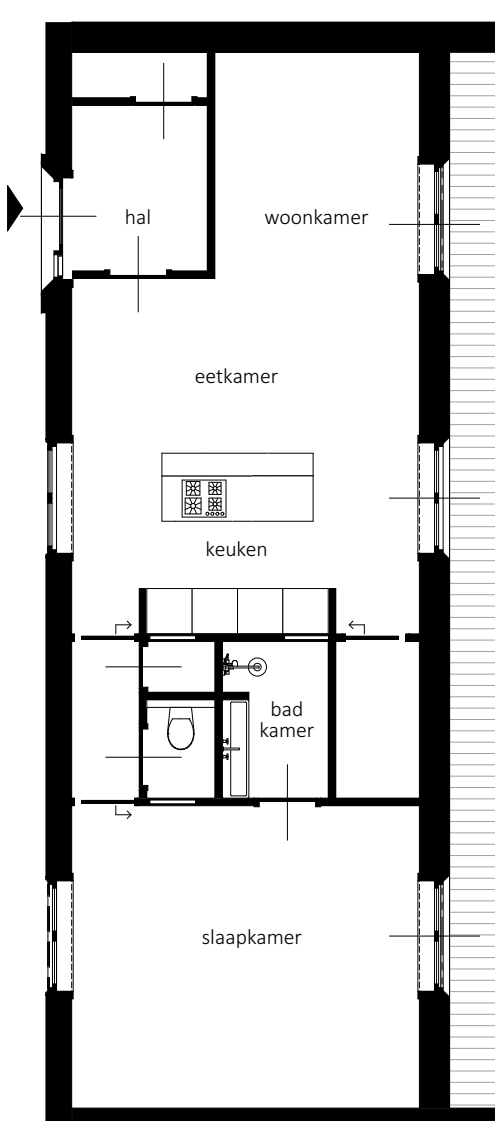


0 1 2 3 4 5

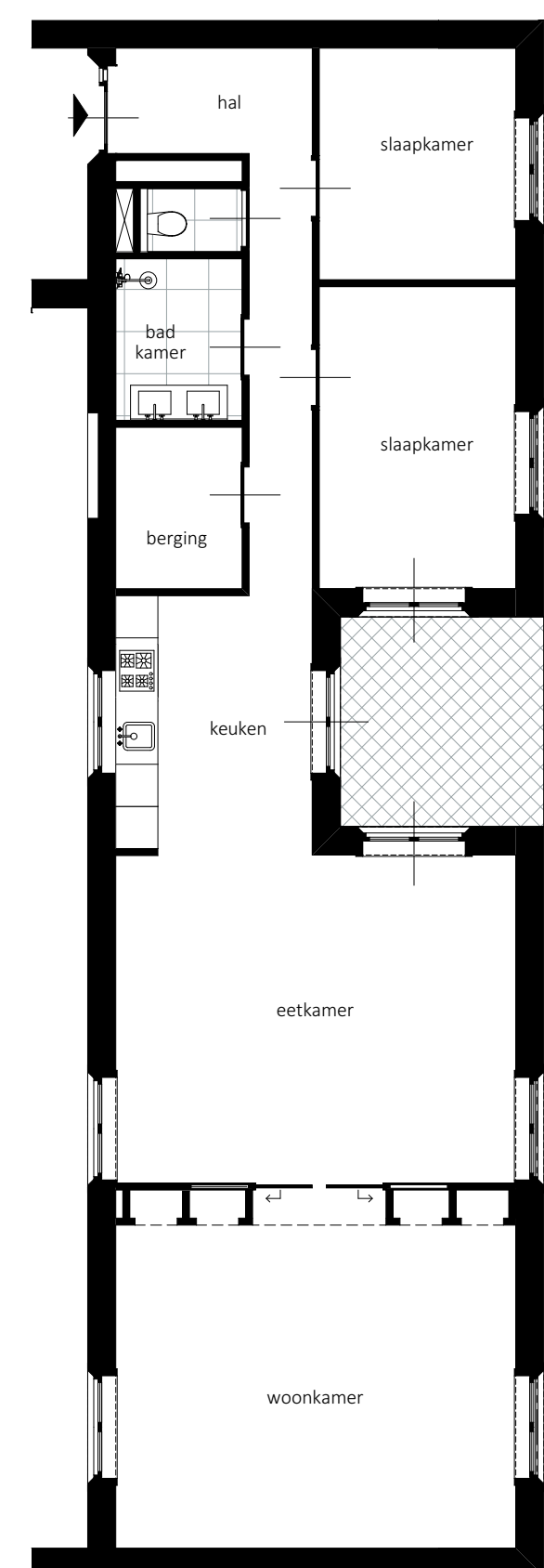
Hoekwooning: 80m² appartement  
ruimten georganiseerd langs balkons  
geïntegreerd



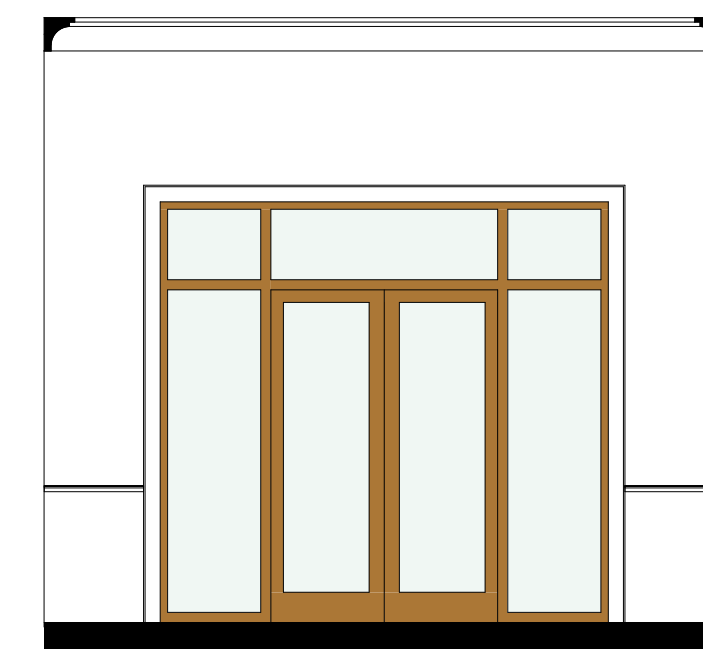
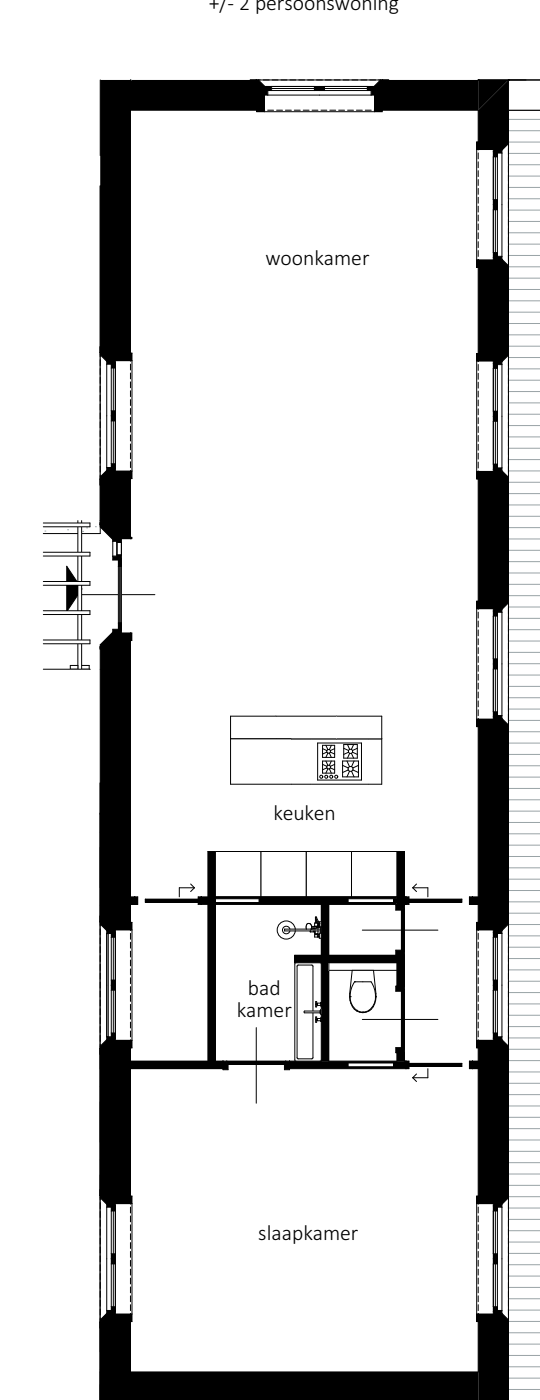
Middenwooning 1e woonlaag: 60m² appartement  
ruimten georganiseerd langs loggia  
v2 - 2 persoonswooning



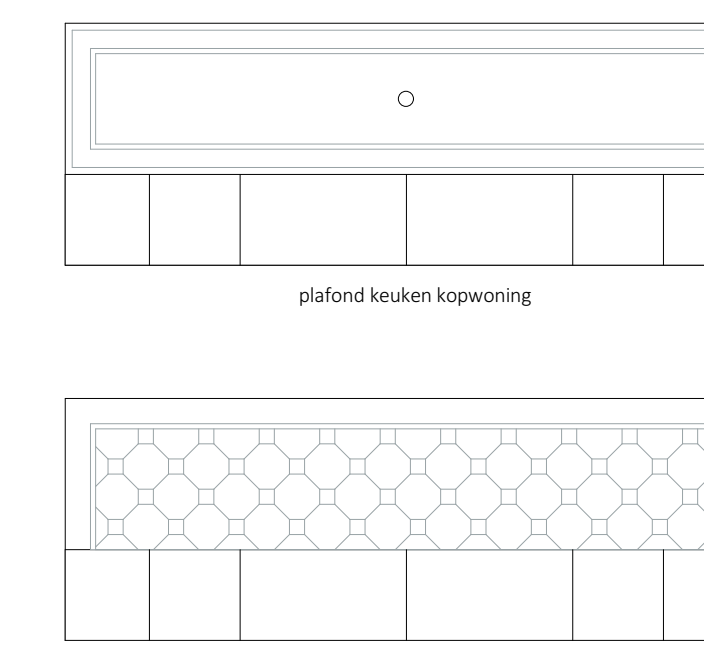
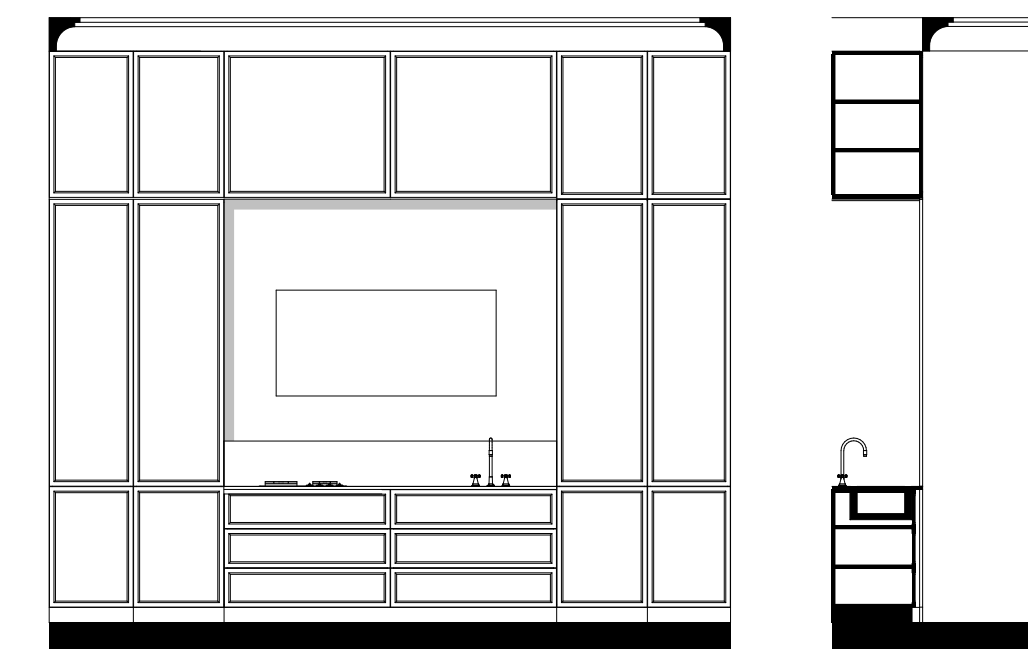
Middenwooning: 100m² appartement  
ruimten georganiseerd rondom centrale loggia "buitenkamer"  
geïntegreerd



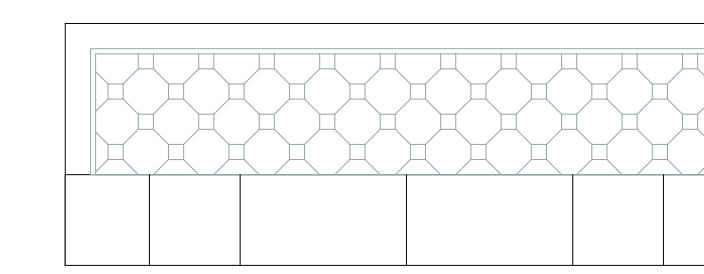
Dakters: 70m² appartement  
ruimten georganiseerd langs balkons  
v2 - 2 persoonswooning



Wanduitzichten keuken koponing



plafond keuken koponing



vloer keuken koponing

