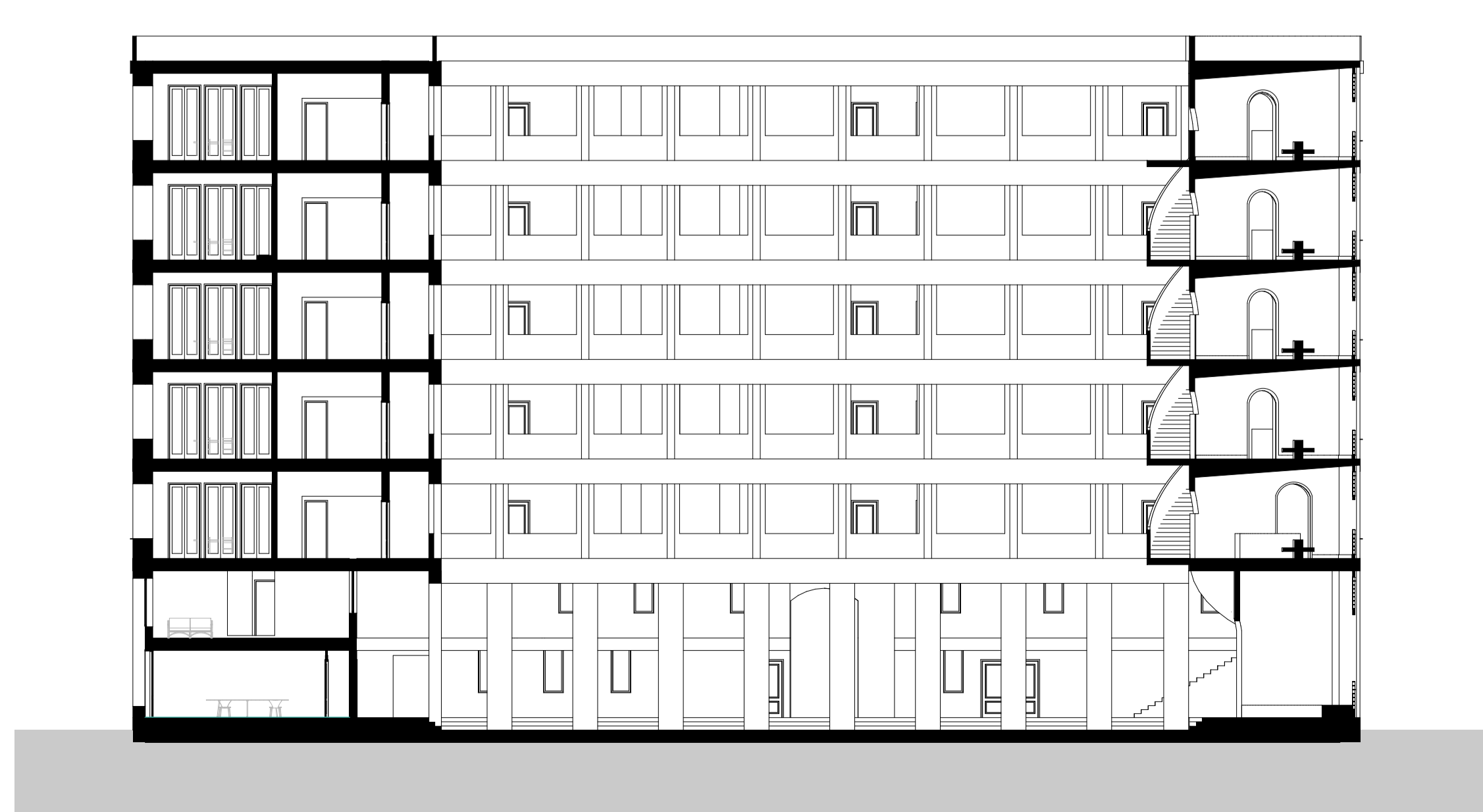
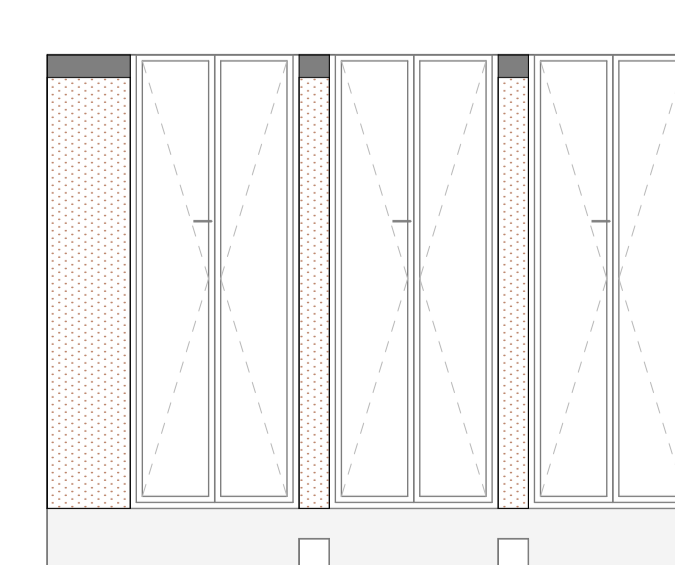
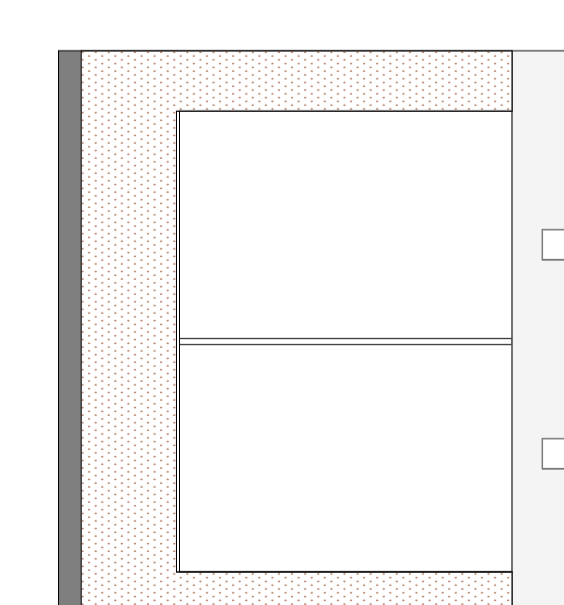
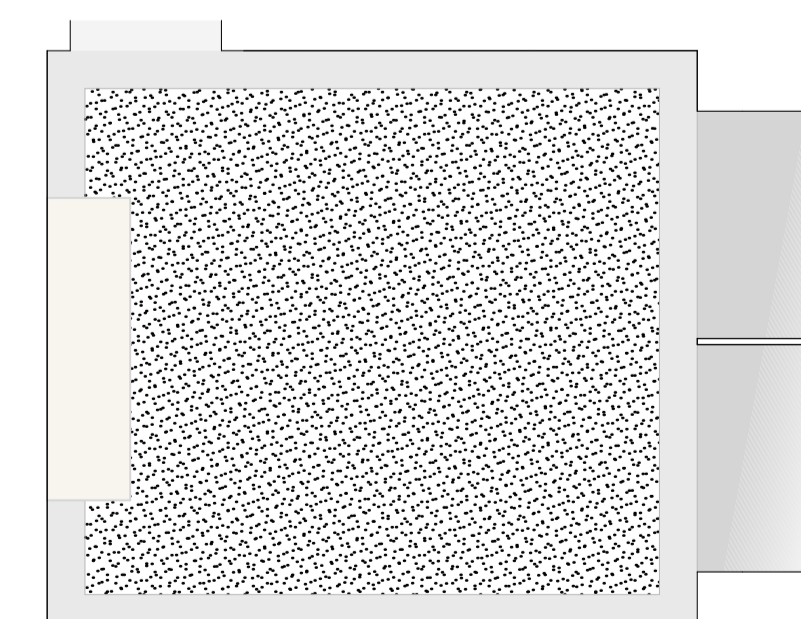
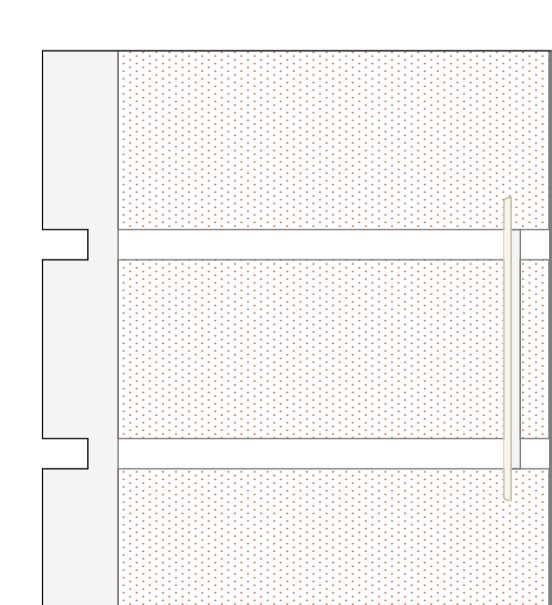
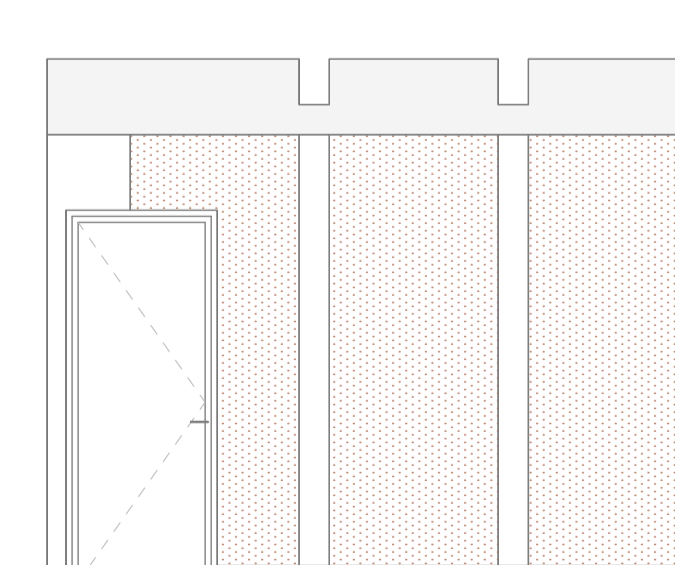
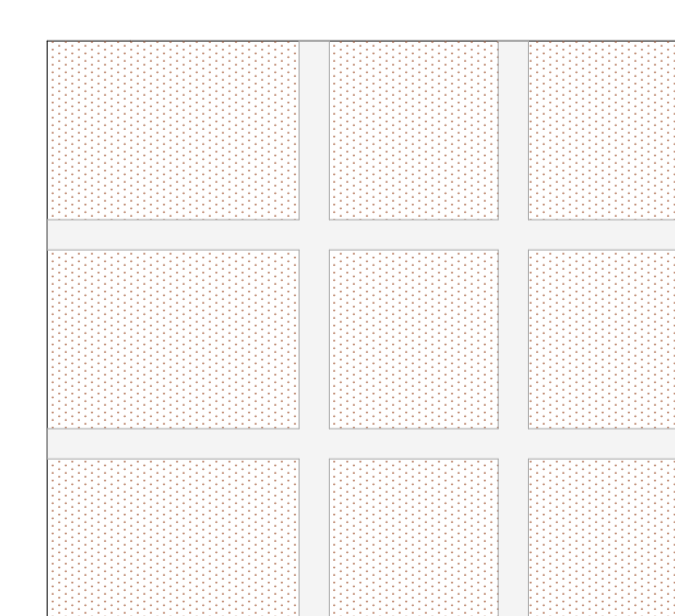
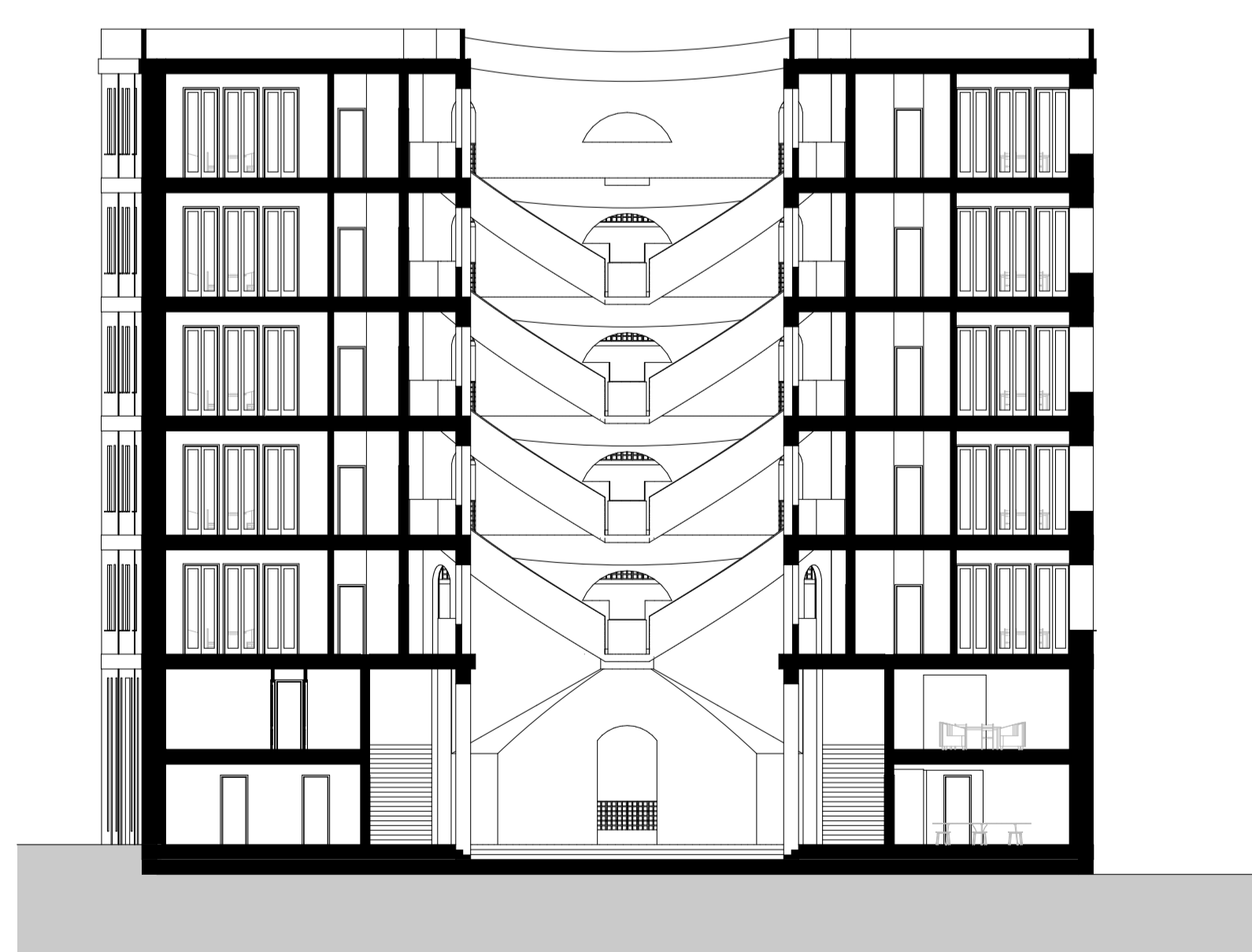
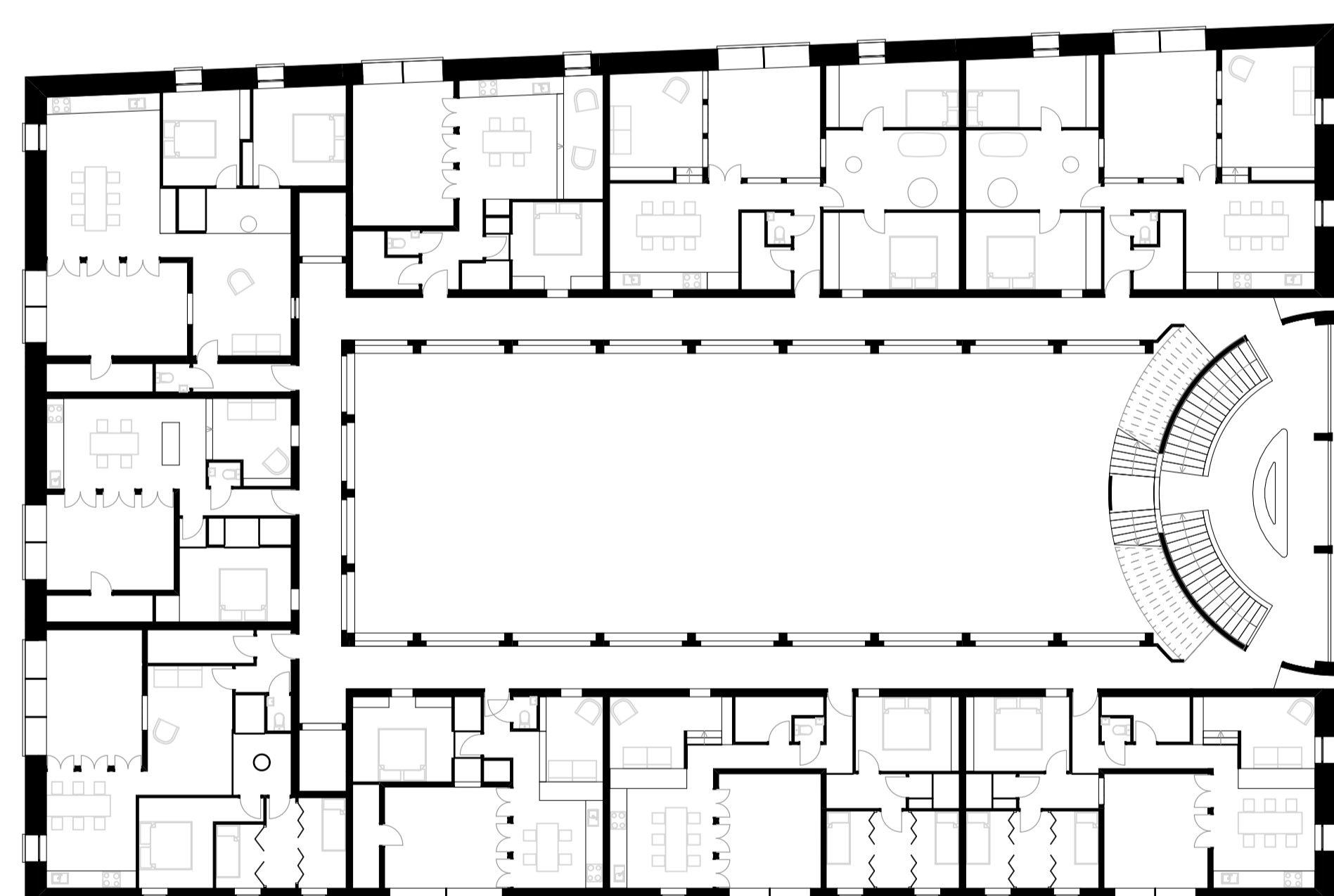
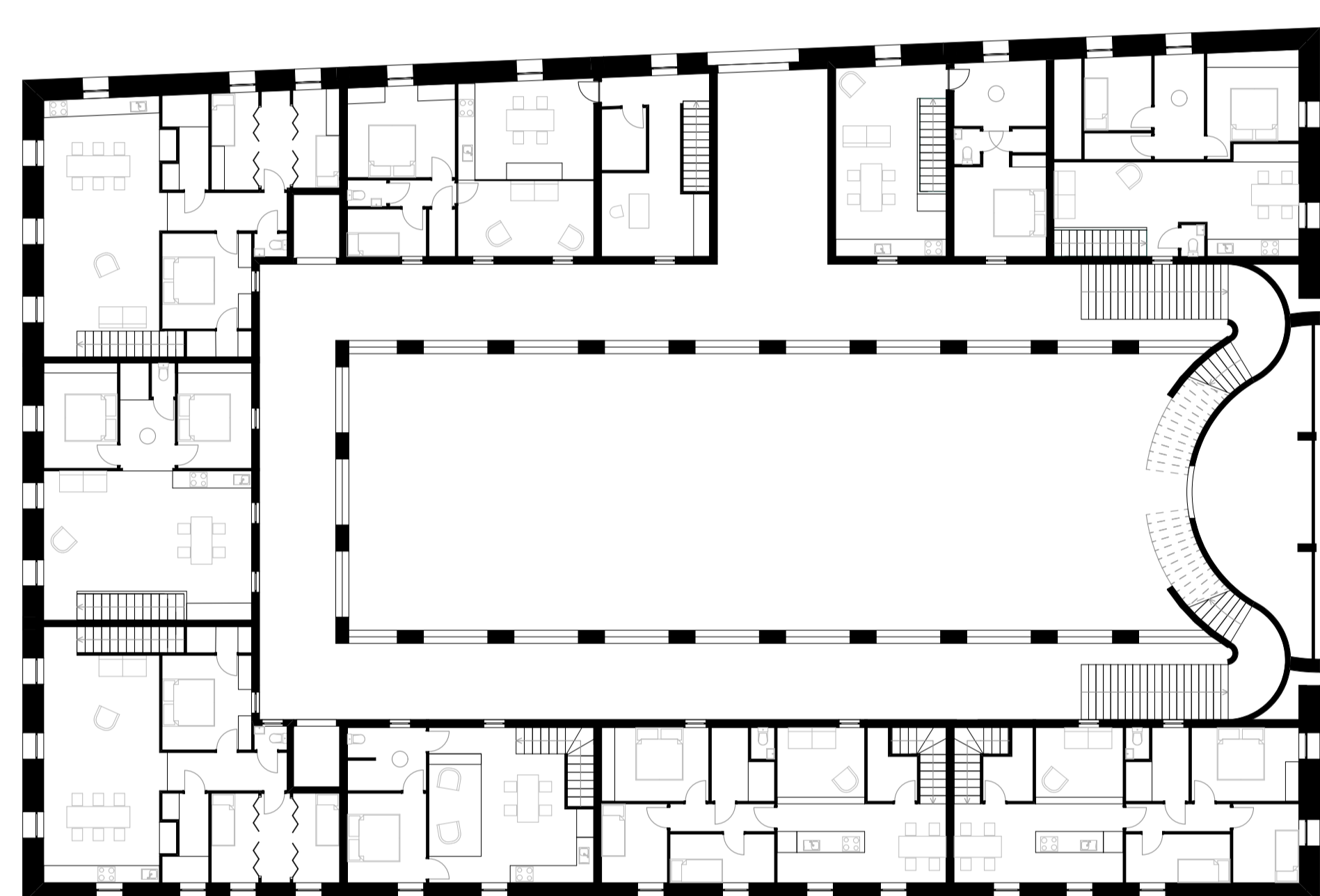
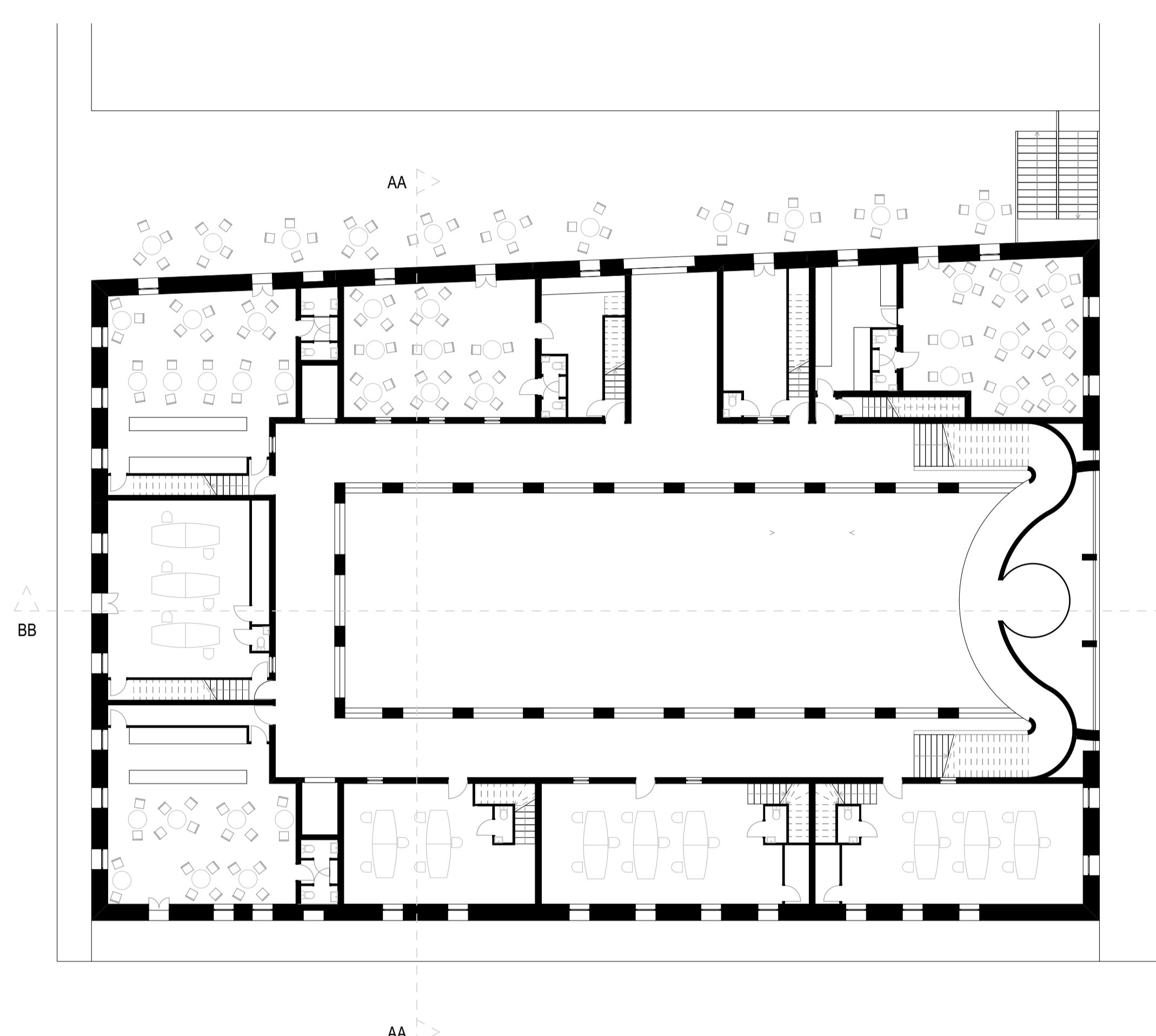
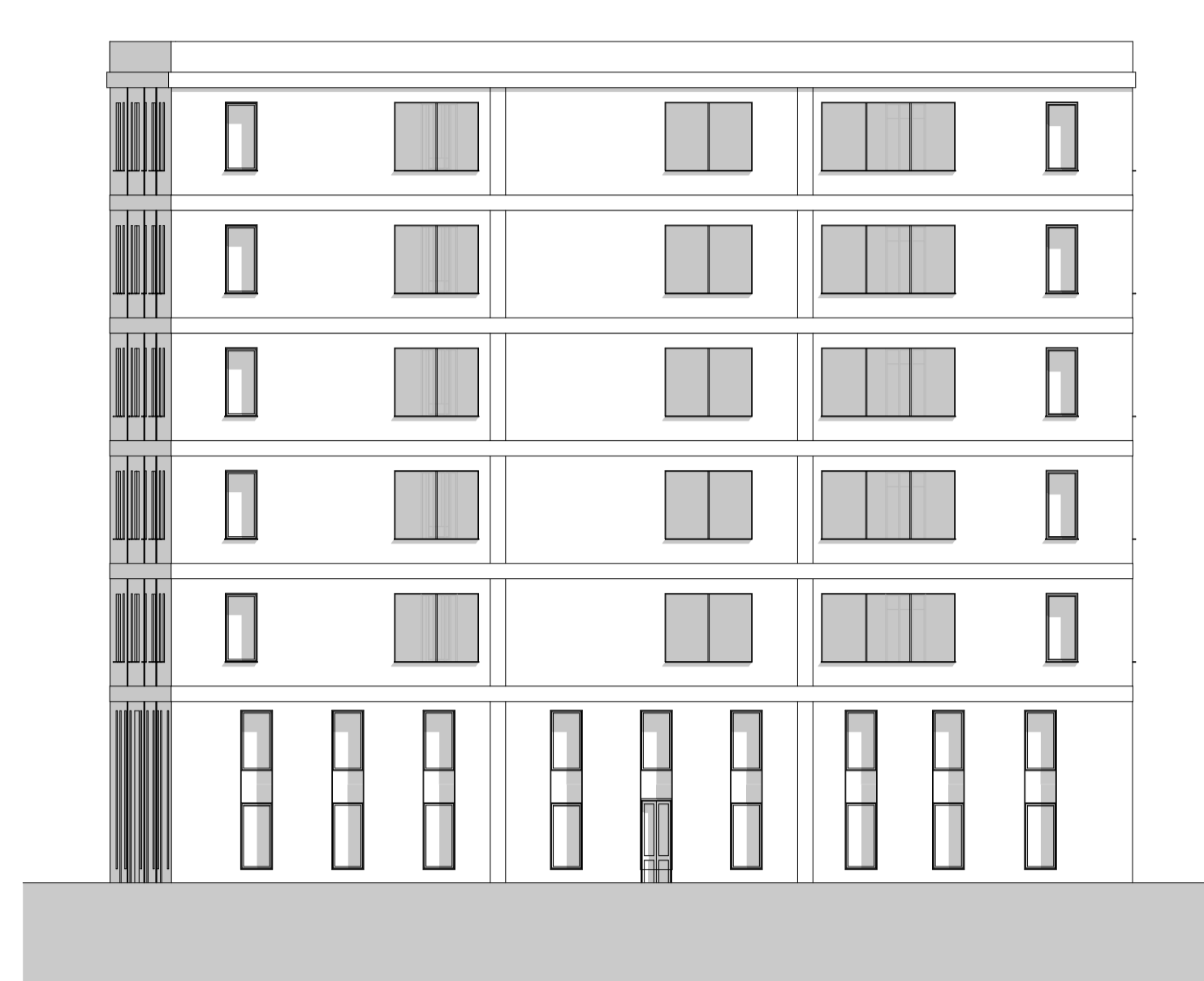
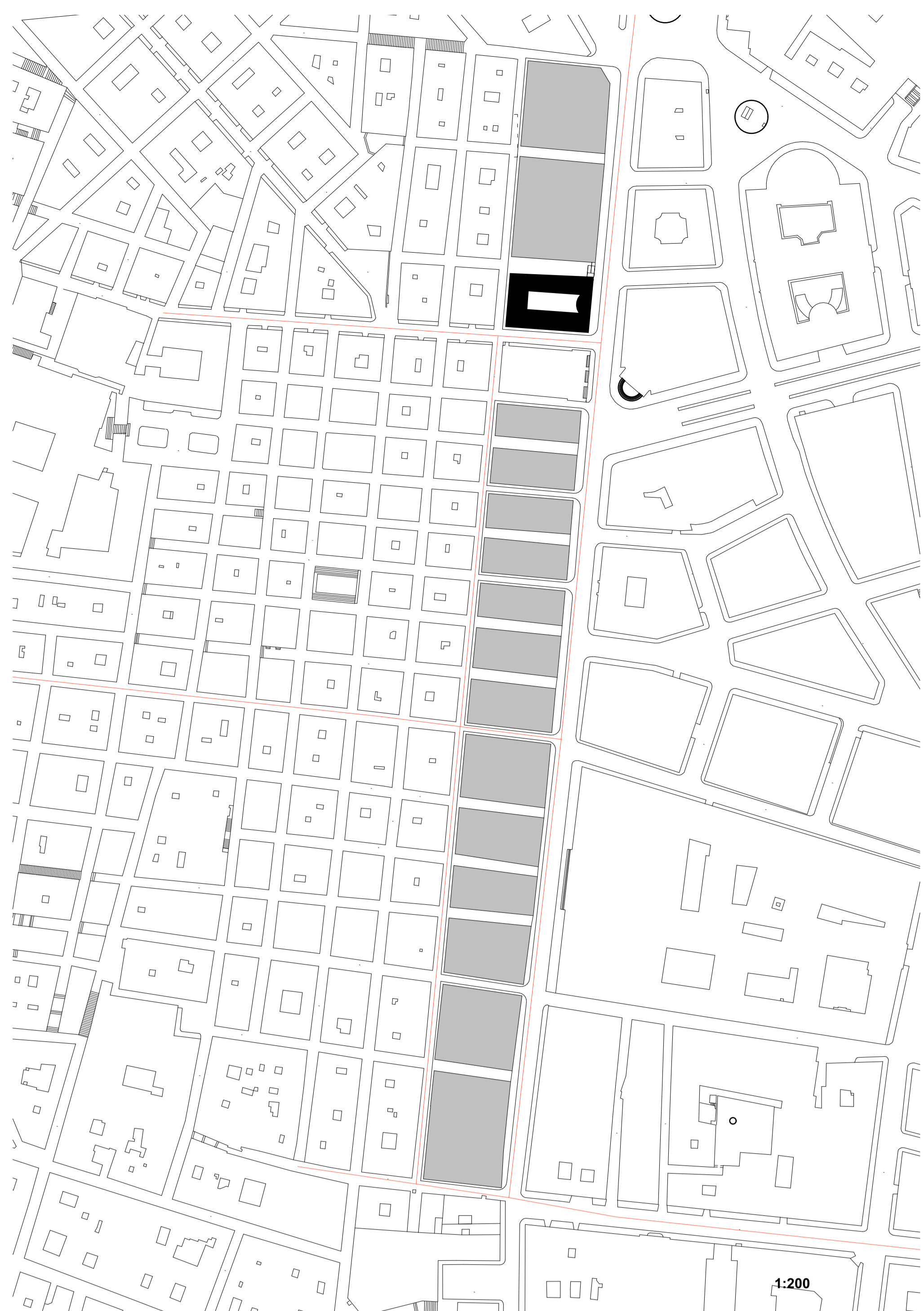


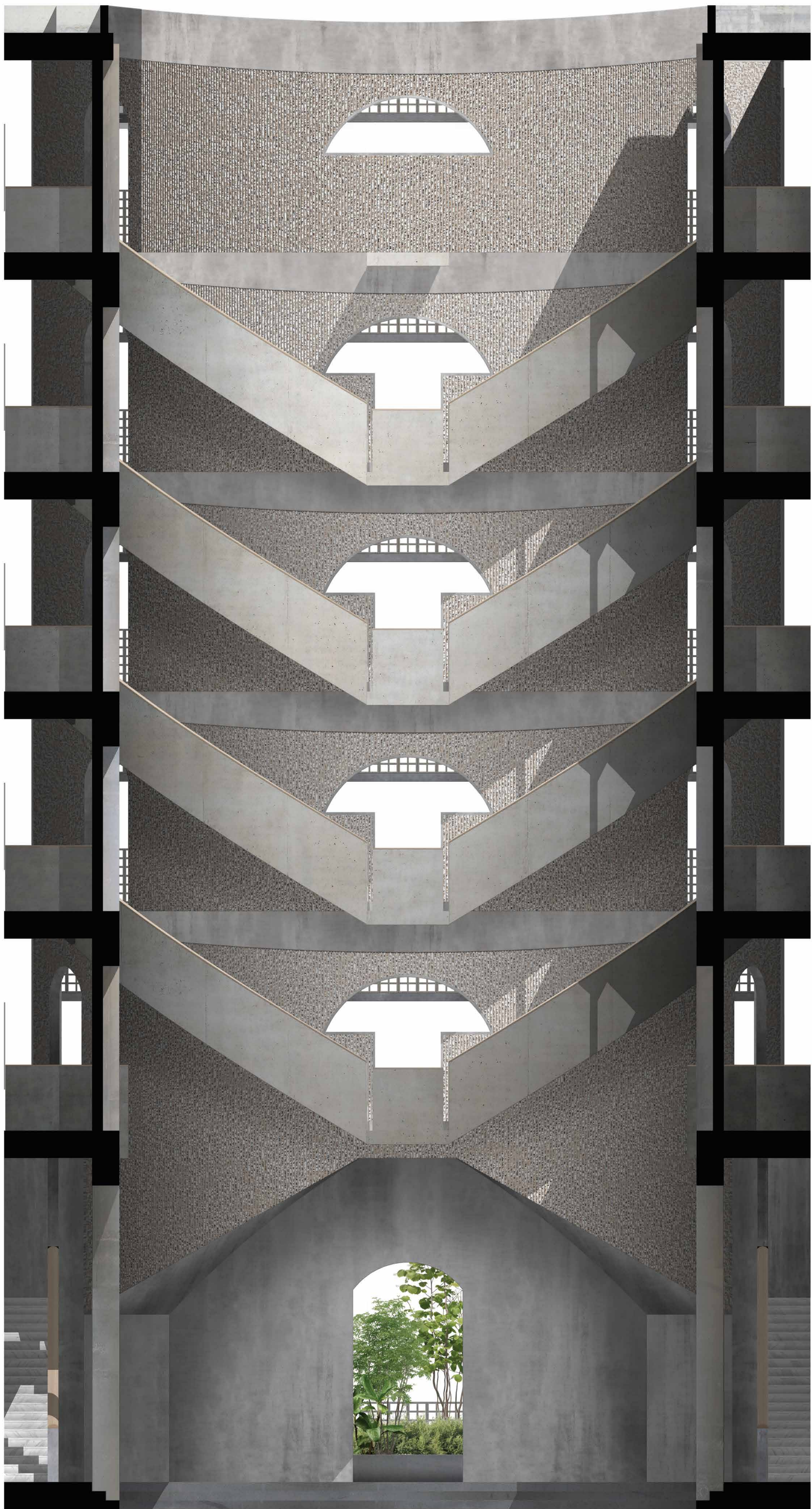
# SCALA VIVERE - DIRK GONZÁLEZ

Archetypal naepolitan palazzi are characterized by the choreography they impose on their users. One enters through a large door (portone) followed by a hallway (androne) to enter a patio (cortile). From here one accesses the stairway which functions as the "face" of the building. The stairway is the element by which a palazzo is recognized and differentiated from others.

*Scala Vivere* is a re-interpretation of the classical Neapolitan palazzo. Here the stairs (scala), the most characteristic element of the palazzo is given a new meaning. Magnifying the stairs as a meeting place by creating communal living spaces within the staircase, make it not only an access route but also a space for living and therefore of use in the age of elevators.



SCALA VIVERE - DIRK GONZÁLEZ



SCALA VIVERE - DIRK GONZÁLEZ

