

Figure and Space, Rotterdam, 2018
Jeroen de Haas

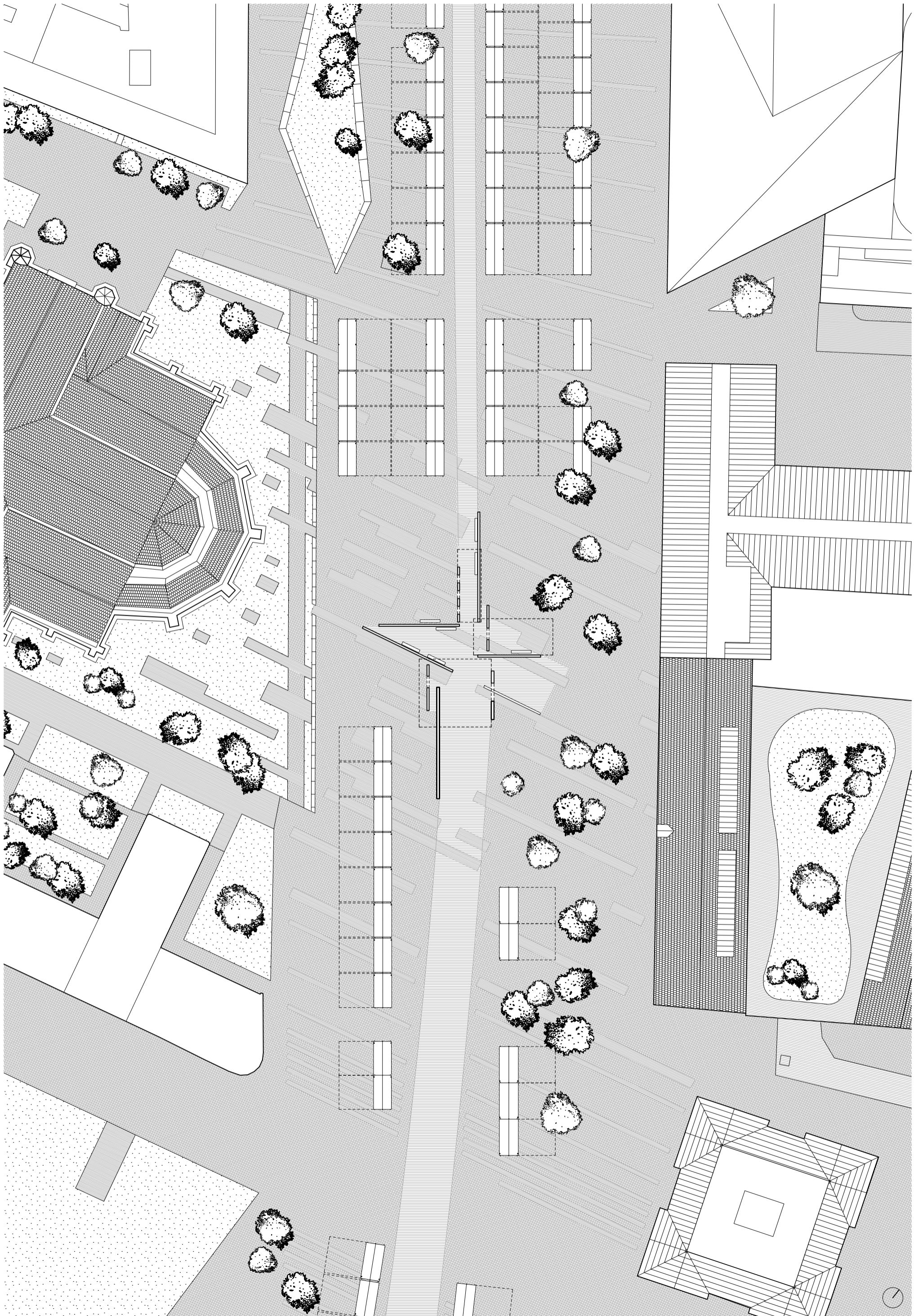
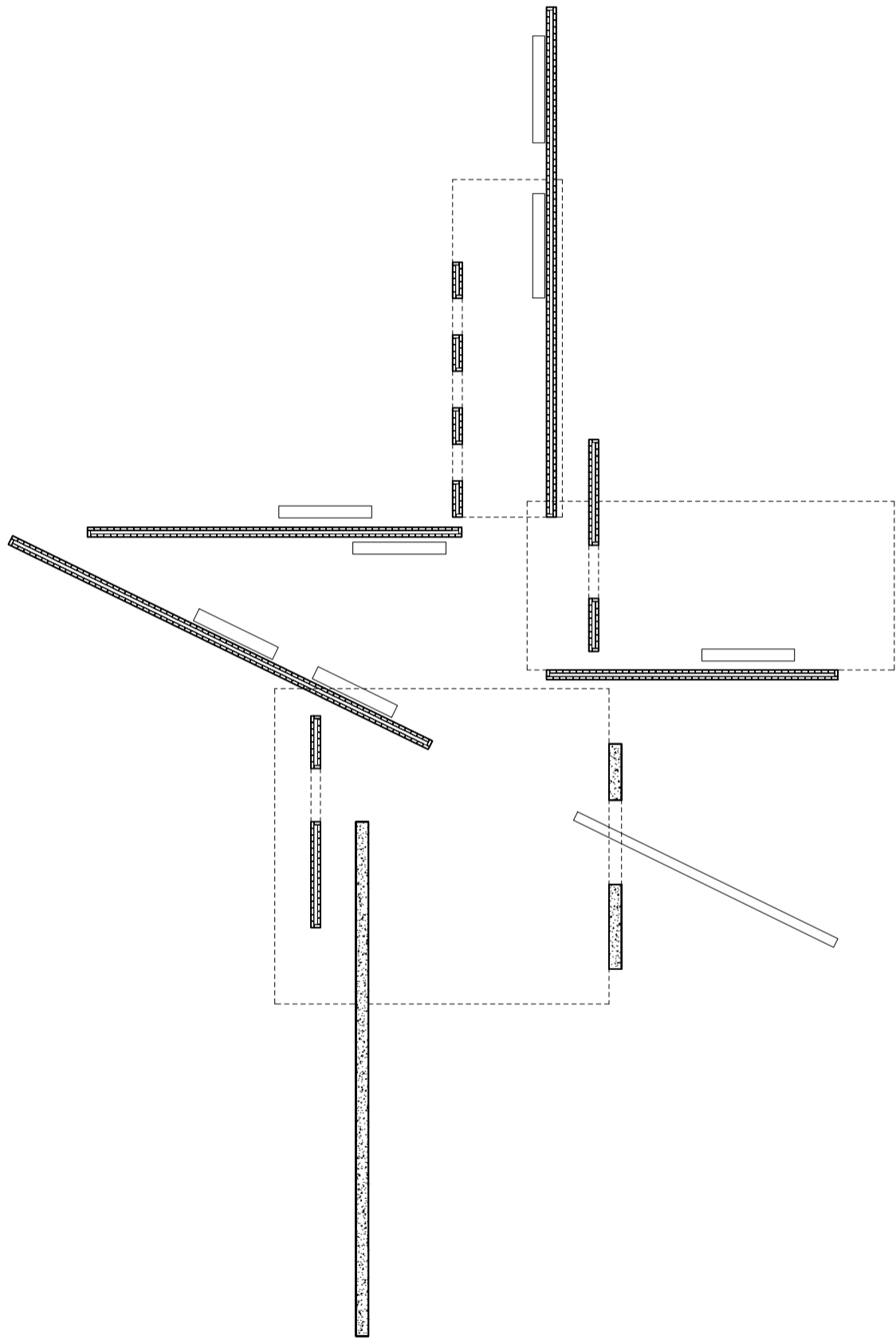
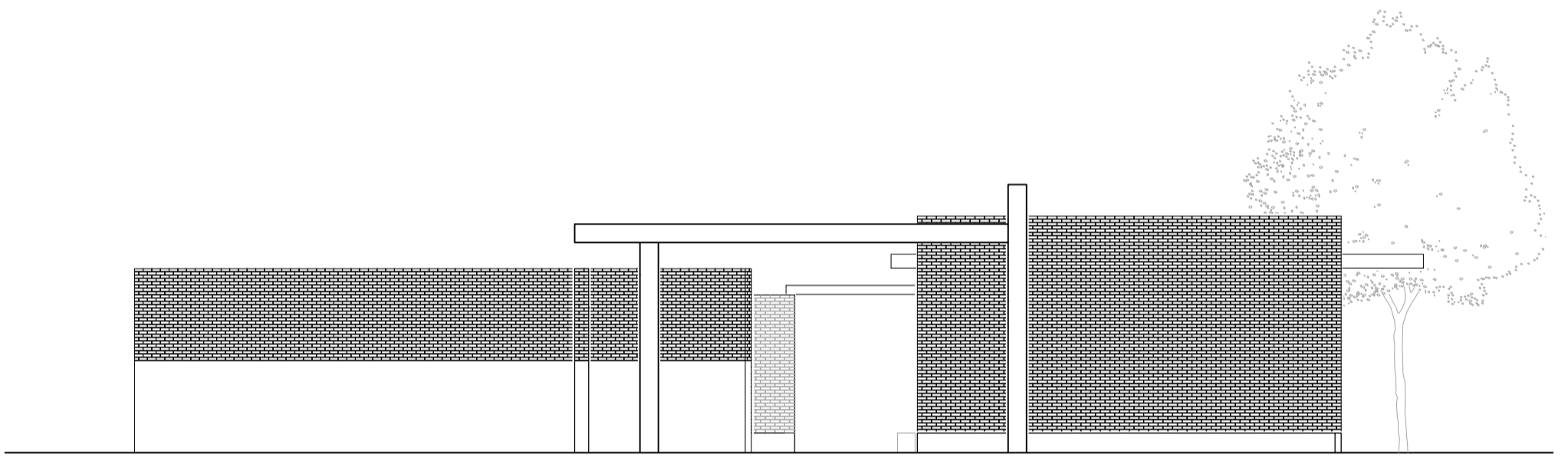
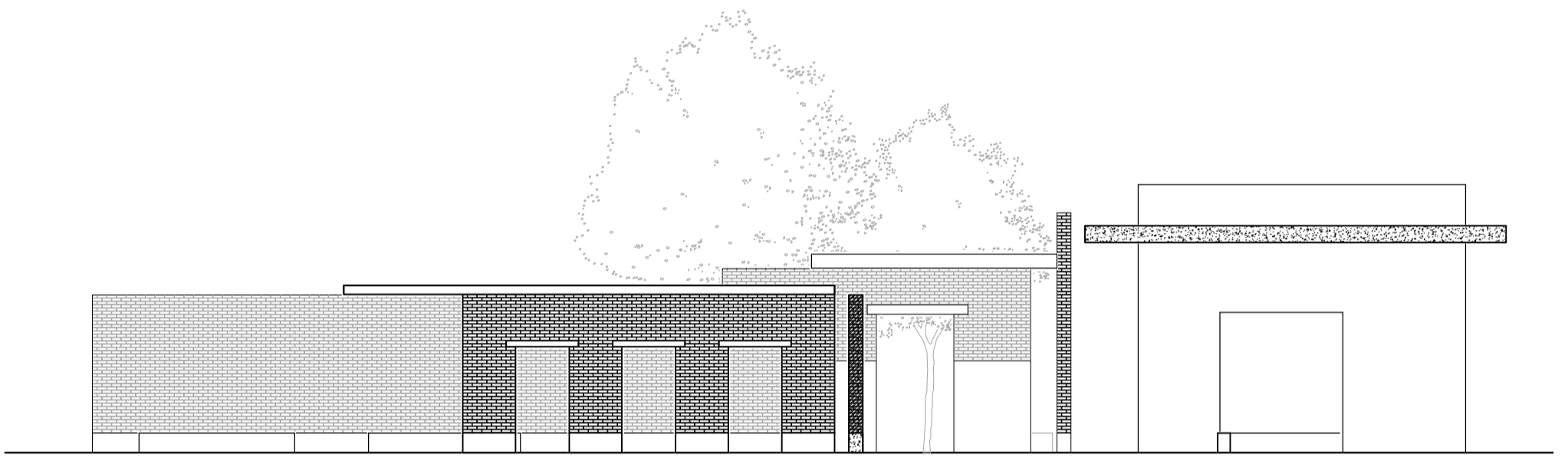
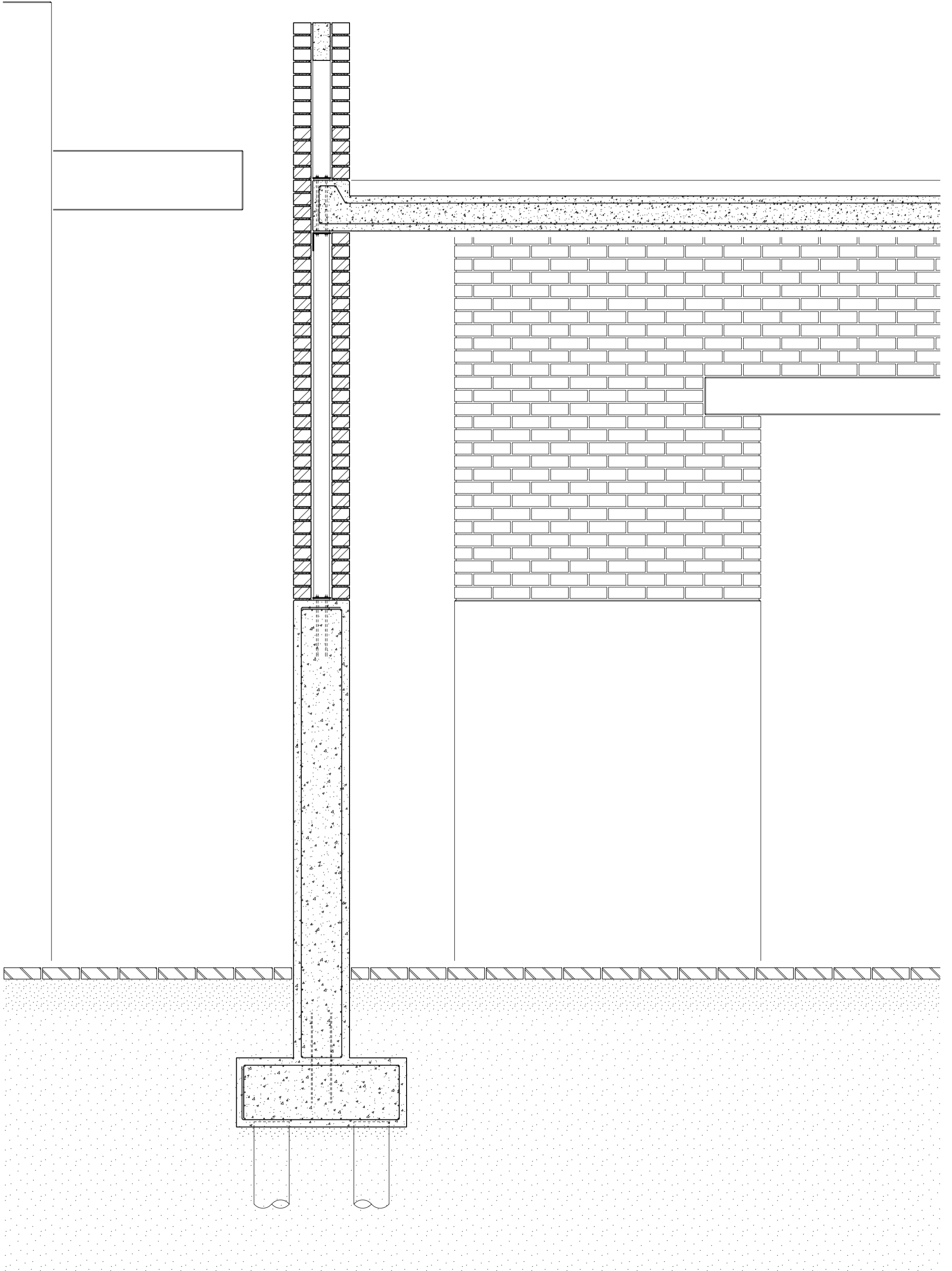


Figure and Space, Rotterdam, 2018
Jeroen de Haas















The Binnenrotte, A linear square divided into three different areas defines the reconstruction of Rotterdam. Iconic buildings compete with each other, resulting in an unstructured environment where composition and calmness are lacking.

Anchored within the center of the square a pavilion appears. Massive walls and roofs create a series of interlocking spaces which are accessible from all sides of the square. The pavilion opens up towards its surrounding, creating a motion by facing and framing specific parts of the square. The inner space produces a small region where the urban pressure of the square is both absorbed and temporarily suspended.

Facing from the Blaak, The building presents itself by a high concrete wall, the overhanging roof provide an entrance that floats above the market space. The space is wide open and appears empty. A diagonal wall appears forming a surprising intimate zone. A red brick is introduced adding color and brings back a human scale by dividing the height of the walls. A varying range of seating options allows the visitor to determine the degree of intimacy. Grazing light enters the spaces creating an intimate atmospheric character.

At last a long narrow horizontal space appears, a series of piers alternate the light and create a dramatic portrait towards the intimate area of the Binnenrotte.