

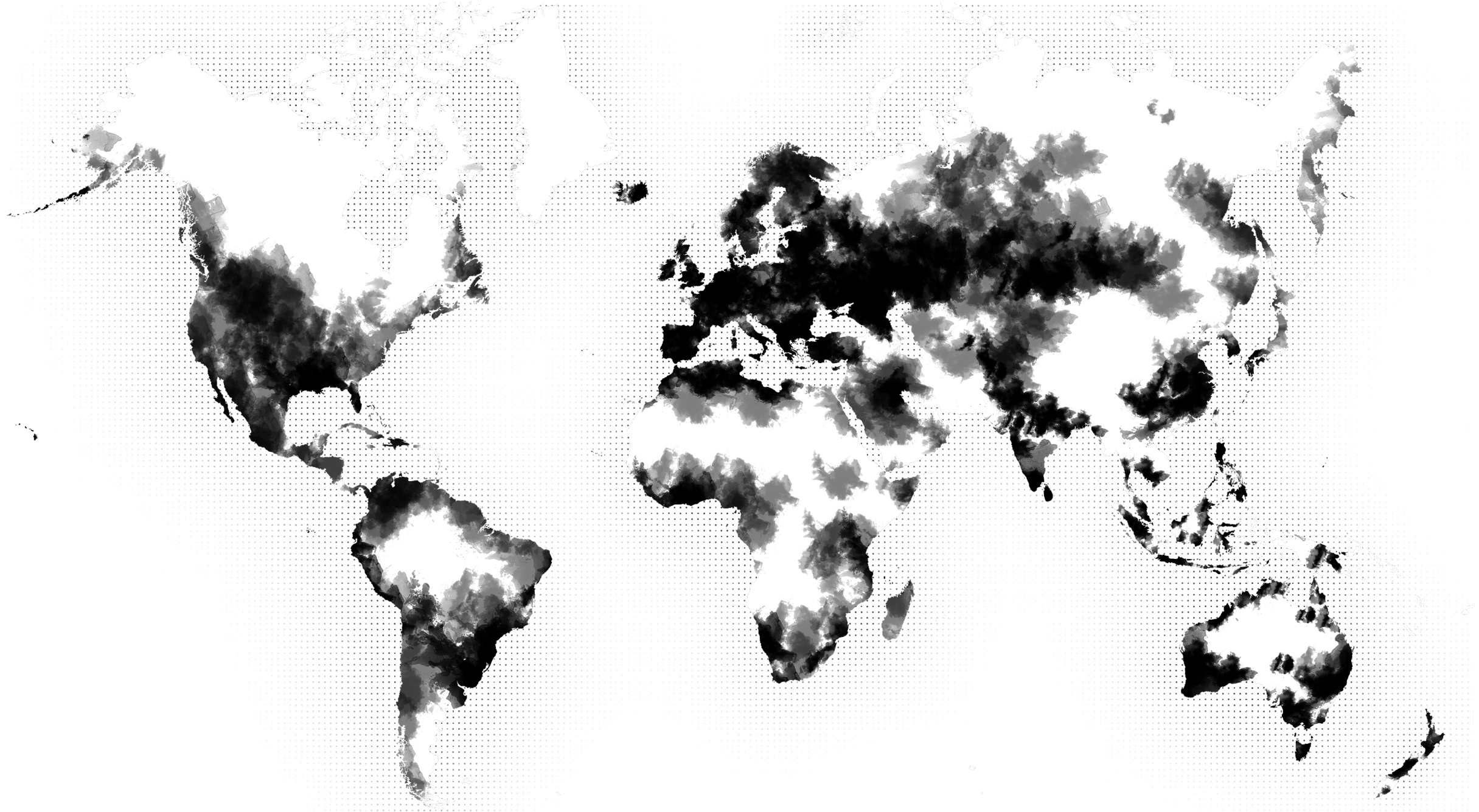
A white spot in Amsterdam

Anna Brockhoff

We live in a digital world with camera supervision, phone's that trace us and companies that collect all our data. This won't stop but accelerate in my future scenario.

Until the whole world is connected, watched and mapped in the digital world. The white spots will disappear in the black, online world map. However the call to quit the online world also

gets louder. Some people have a strong feeling of nostalgia for the past era. Is there a way to disconnect and to get offline in the busy and connected city?



The worldmap with all black (online) and white (offline) zones.



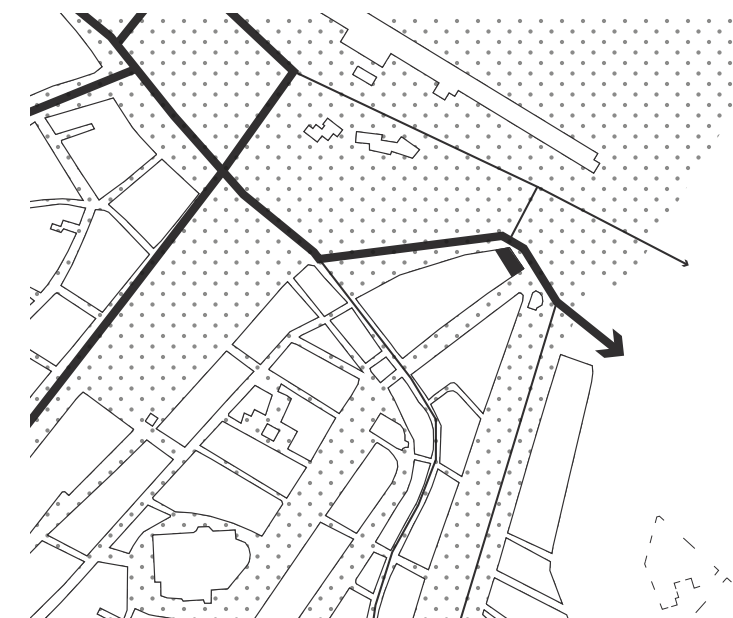
Amsterdam city center

The city center with camera surveillance zones. Mostly in the area with lots of traffic and tourists.



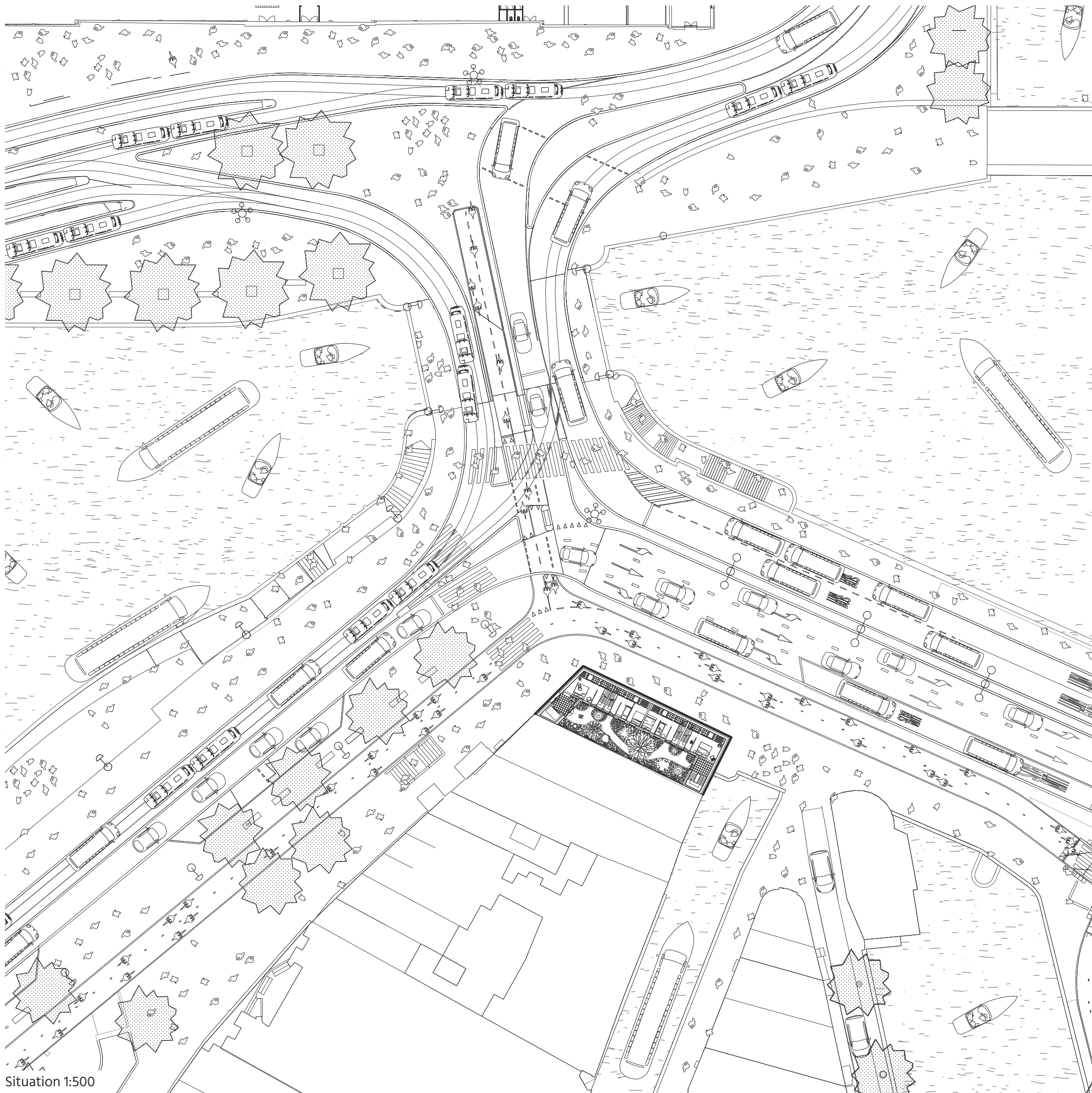
GPS movement

Area around central station with camera supervision and traffic measured by GPS movement.



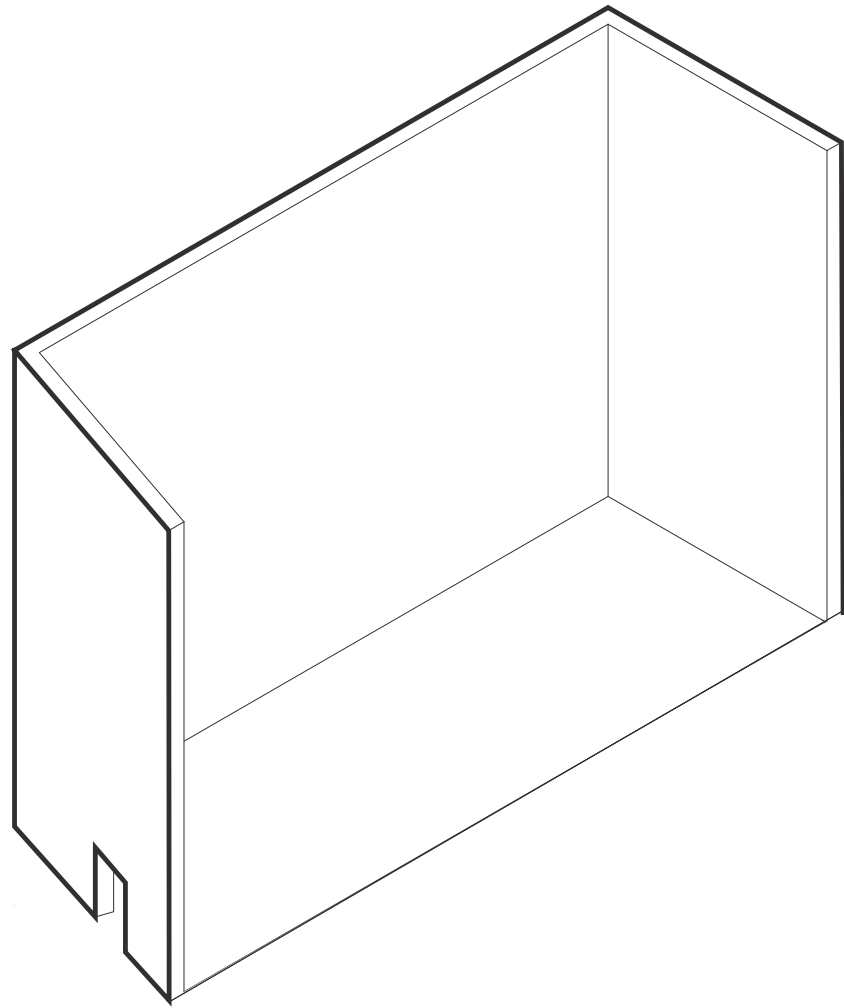
Project location

A zoom in on the area around the central station. Showing the project location.



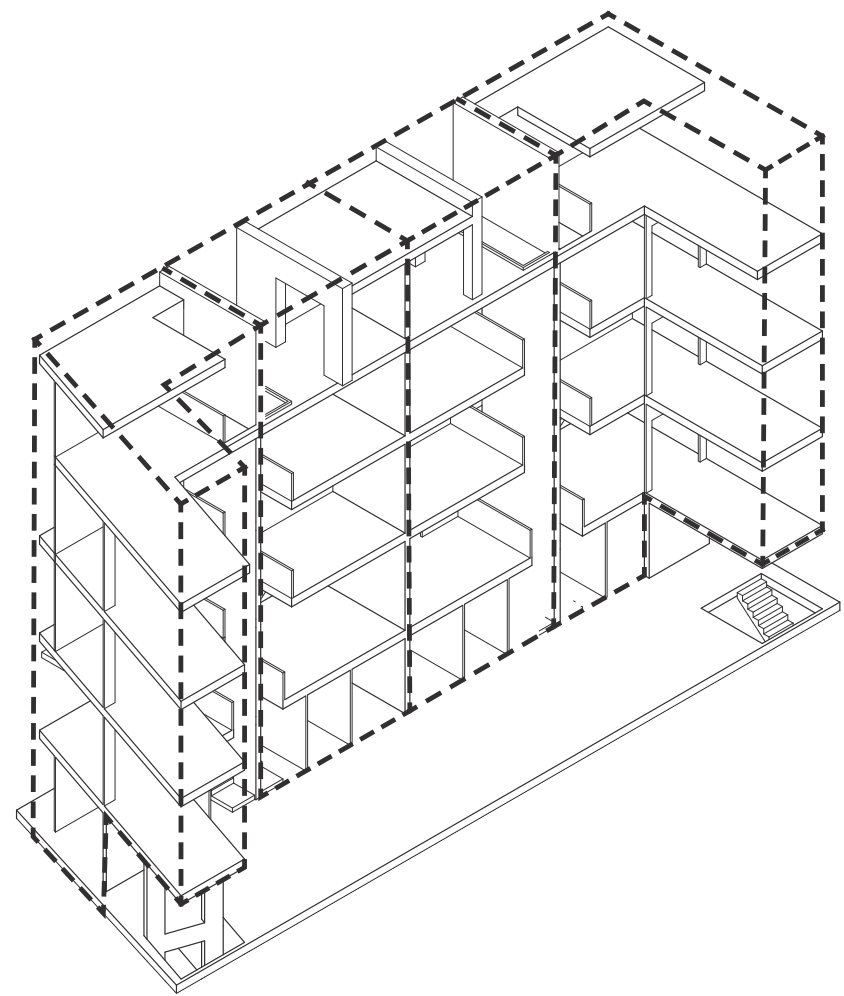
Situation 1:500





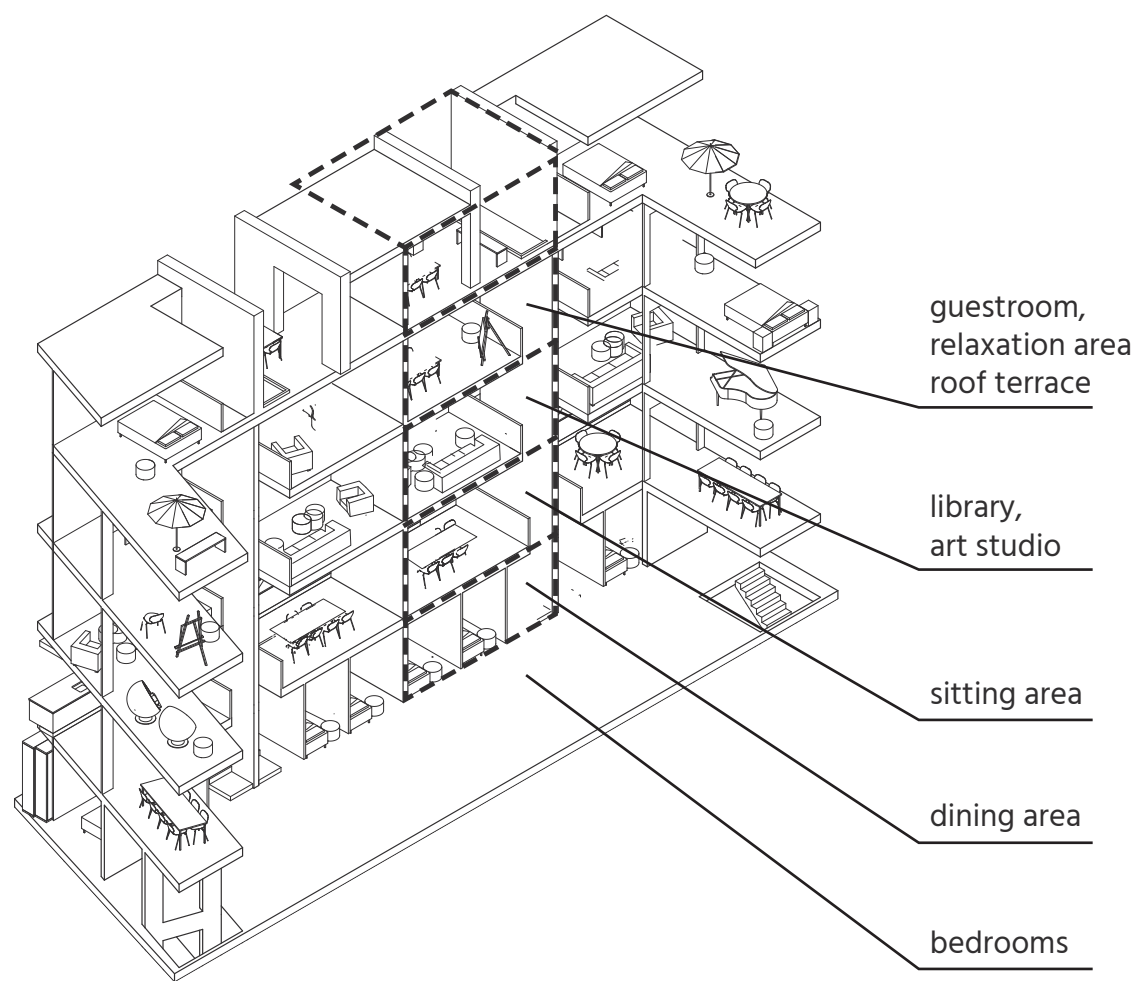
Skin

Protective and closed outside facade to keep all the signals and noise out.



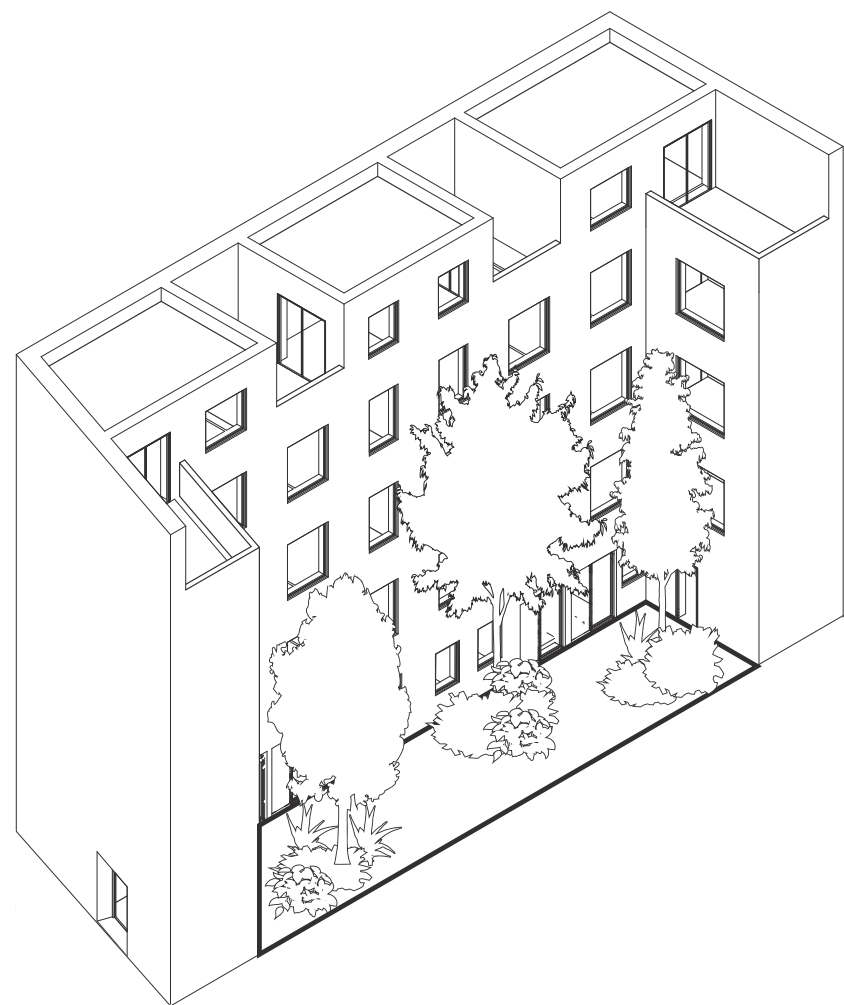
Four dwellings

Accessible via the main entrance on the ground floor storage and bikeparking underground.



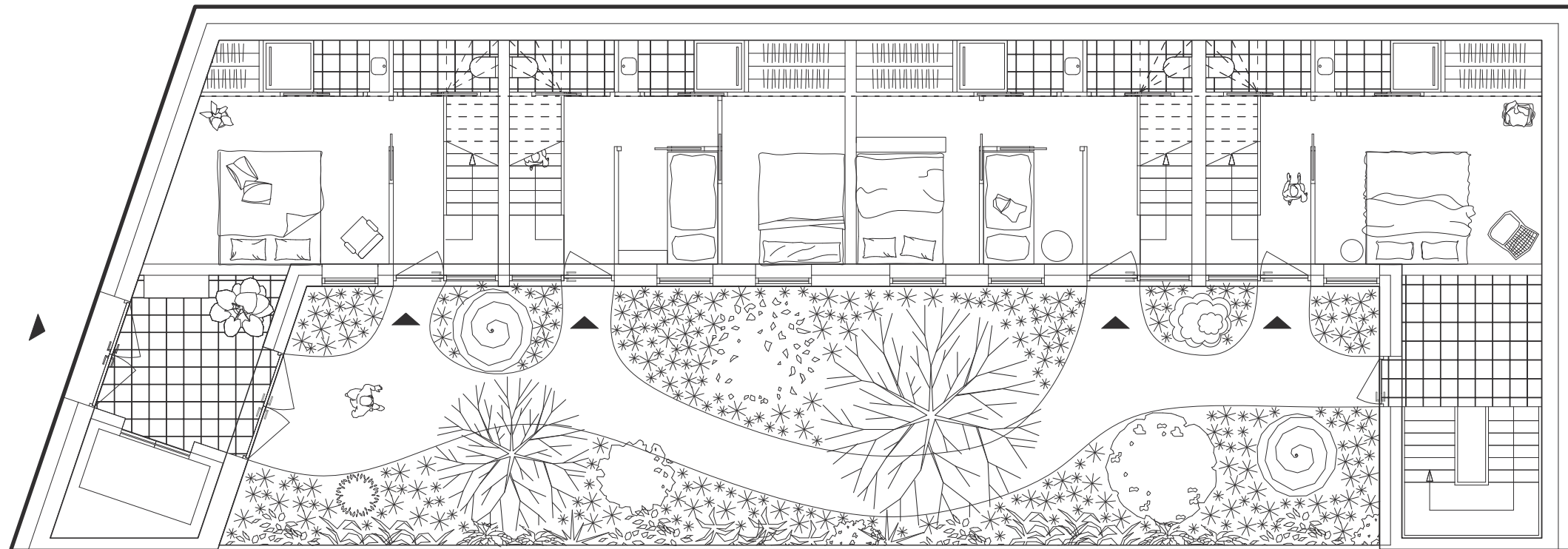
Program

All dwellings have the main program like bedrooms, dining area and sitting area. The rest is optional and variable per household.

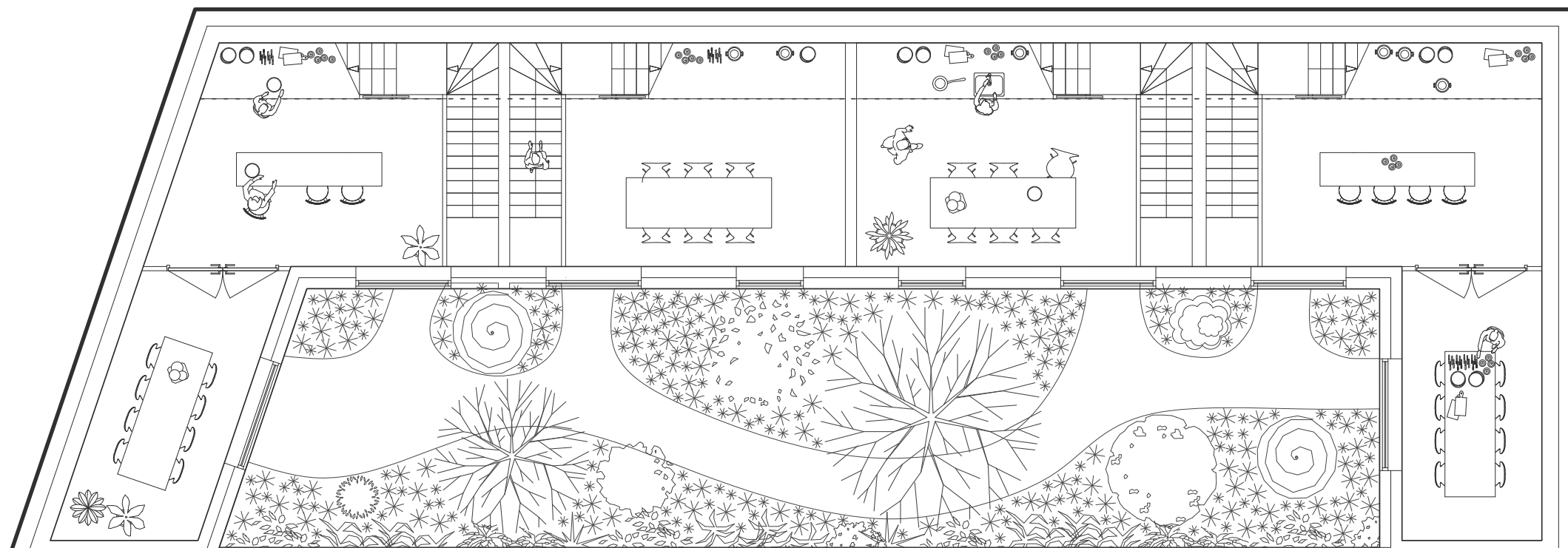


Patio and inside facade

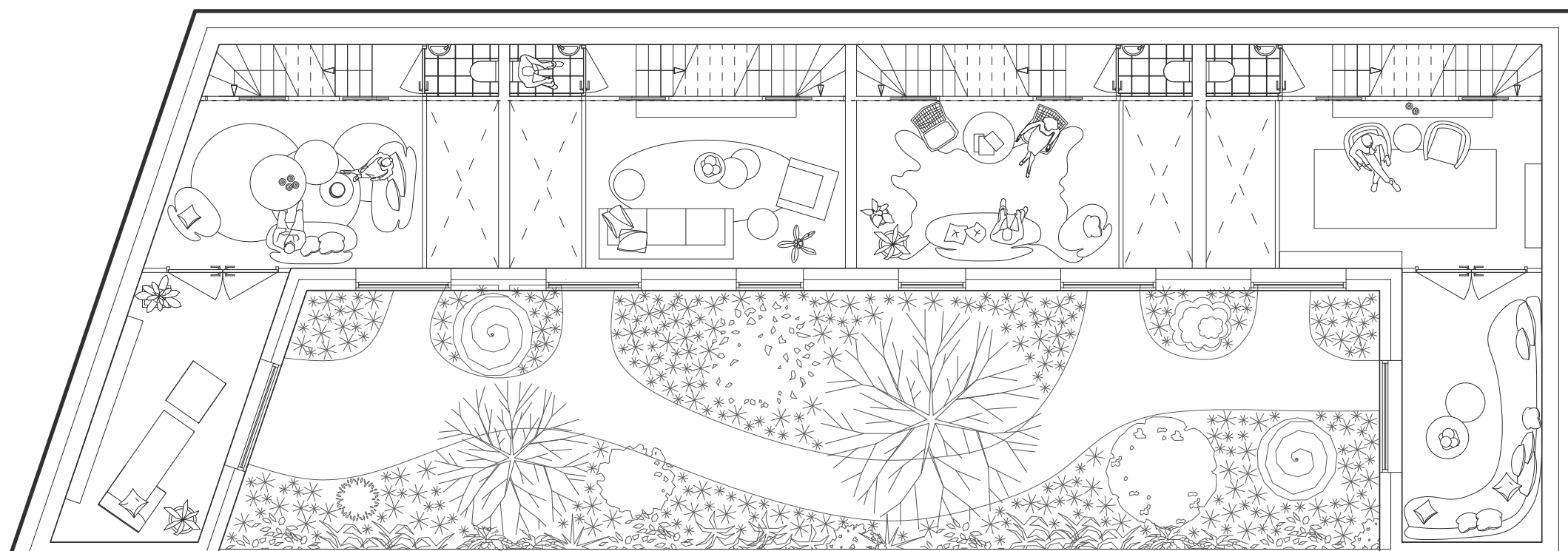
For daylight with a view on the green patio.



Ground floor 1:100



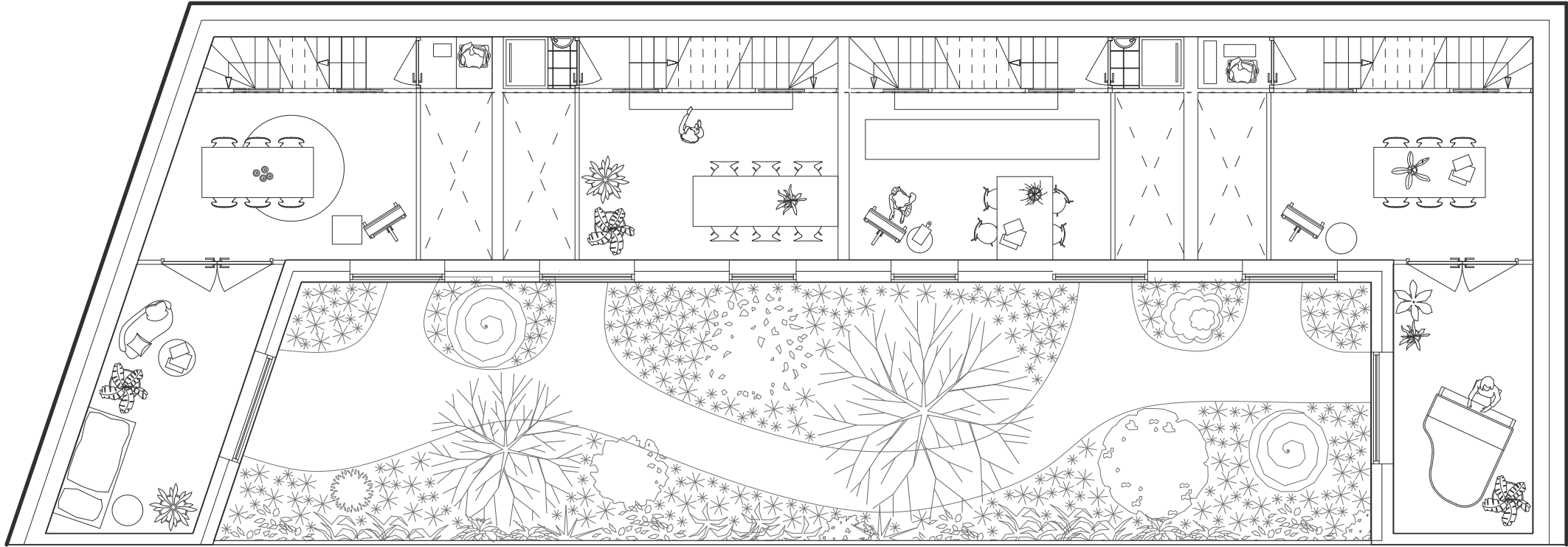
First floor 1:100



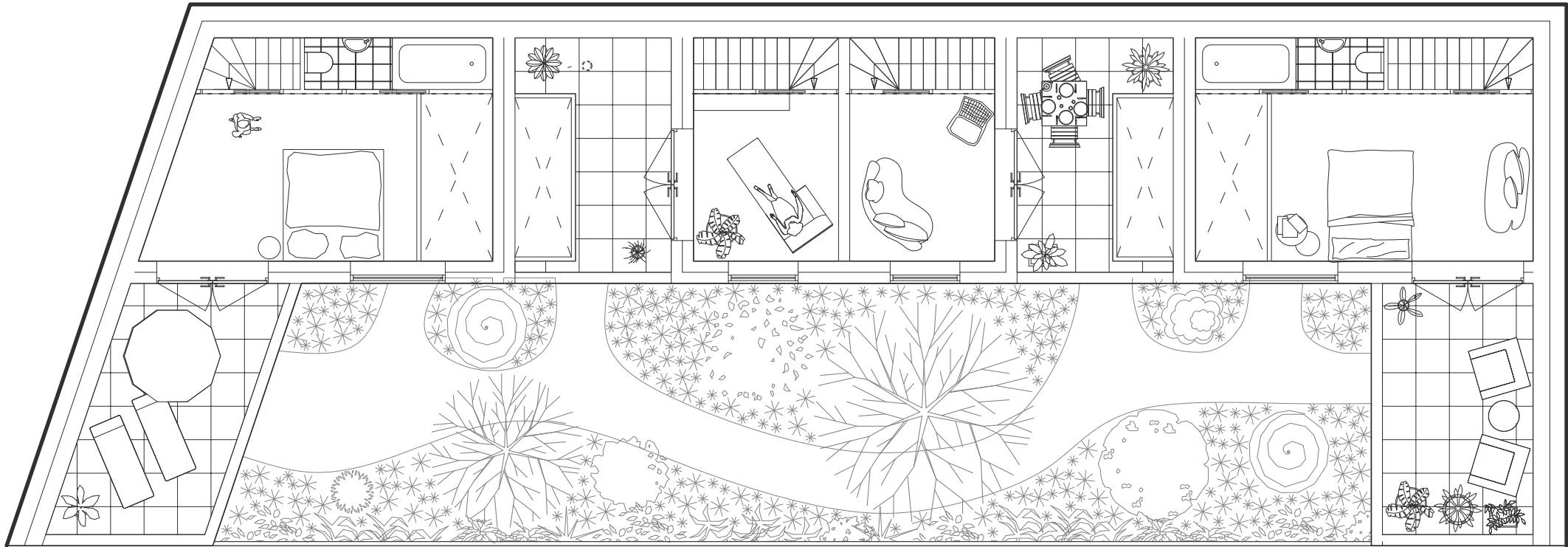
Second floor 1:100



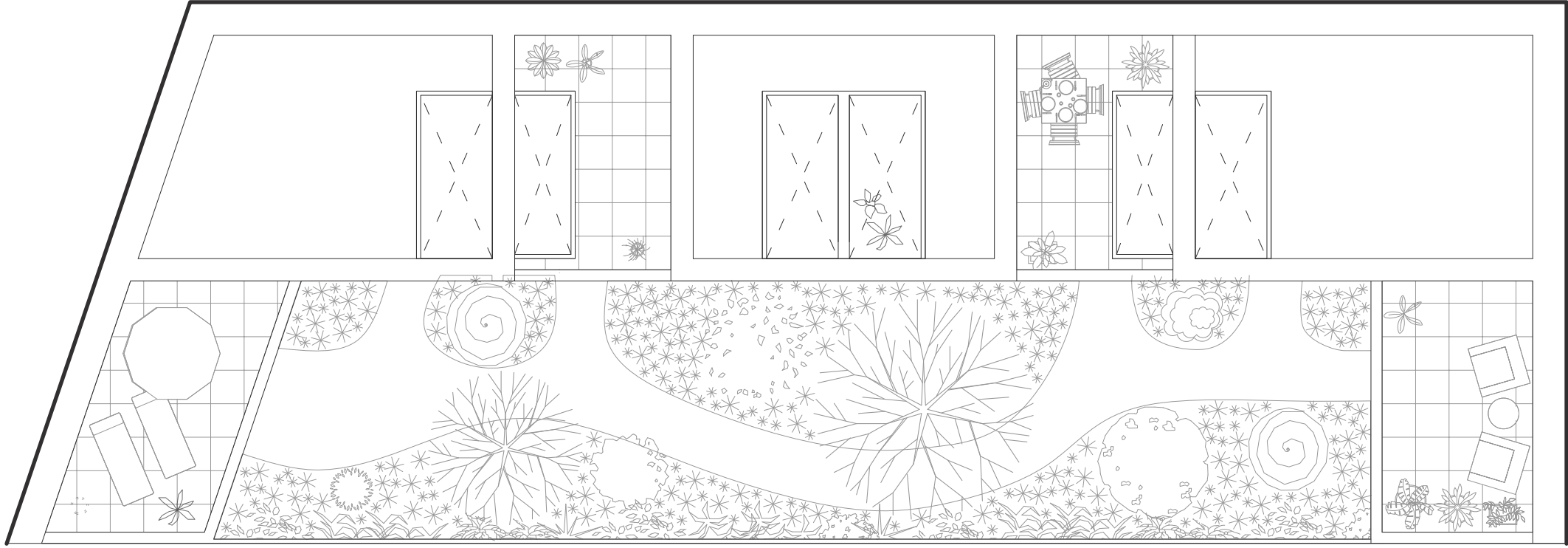




Third floor 1:100



Fourth floor 1:100



Top view 1:100

