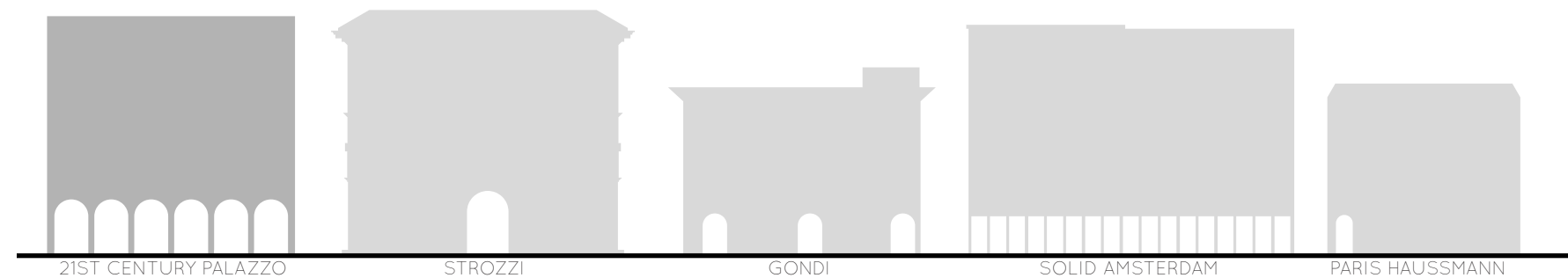


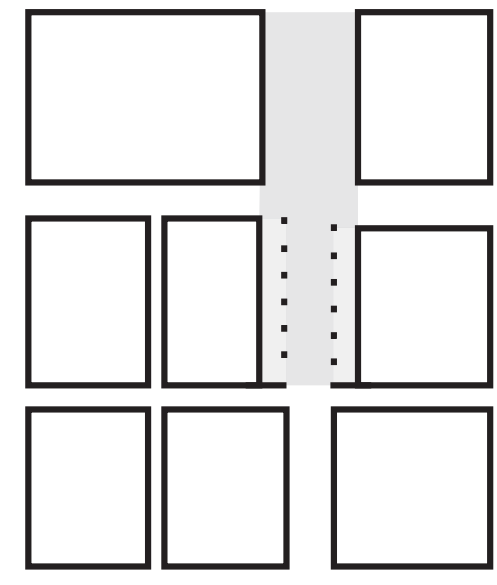


# IL VICINO DI STROZZI

A BOLD BUILDING WITH AN EYE FOR ITS CONTEXT.

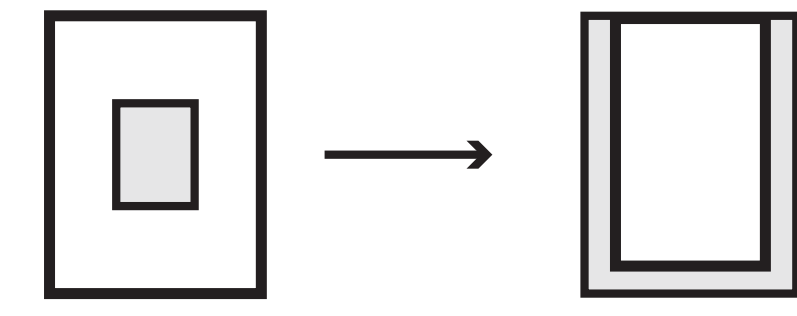


SCALE STUDY  
ONE OF THE BIG BOYS

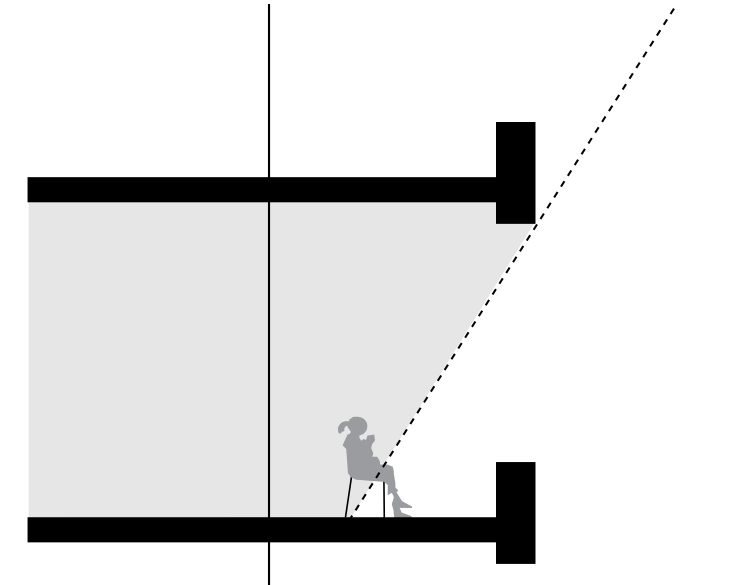


LOGGIA INCREASES PIAZZA STROZZI

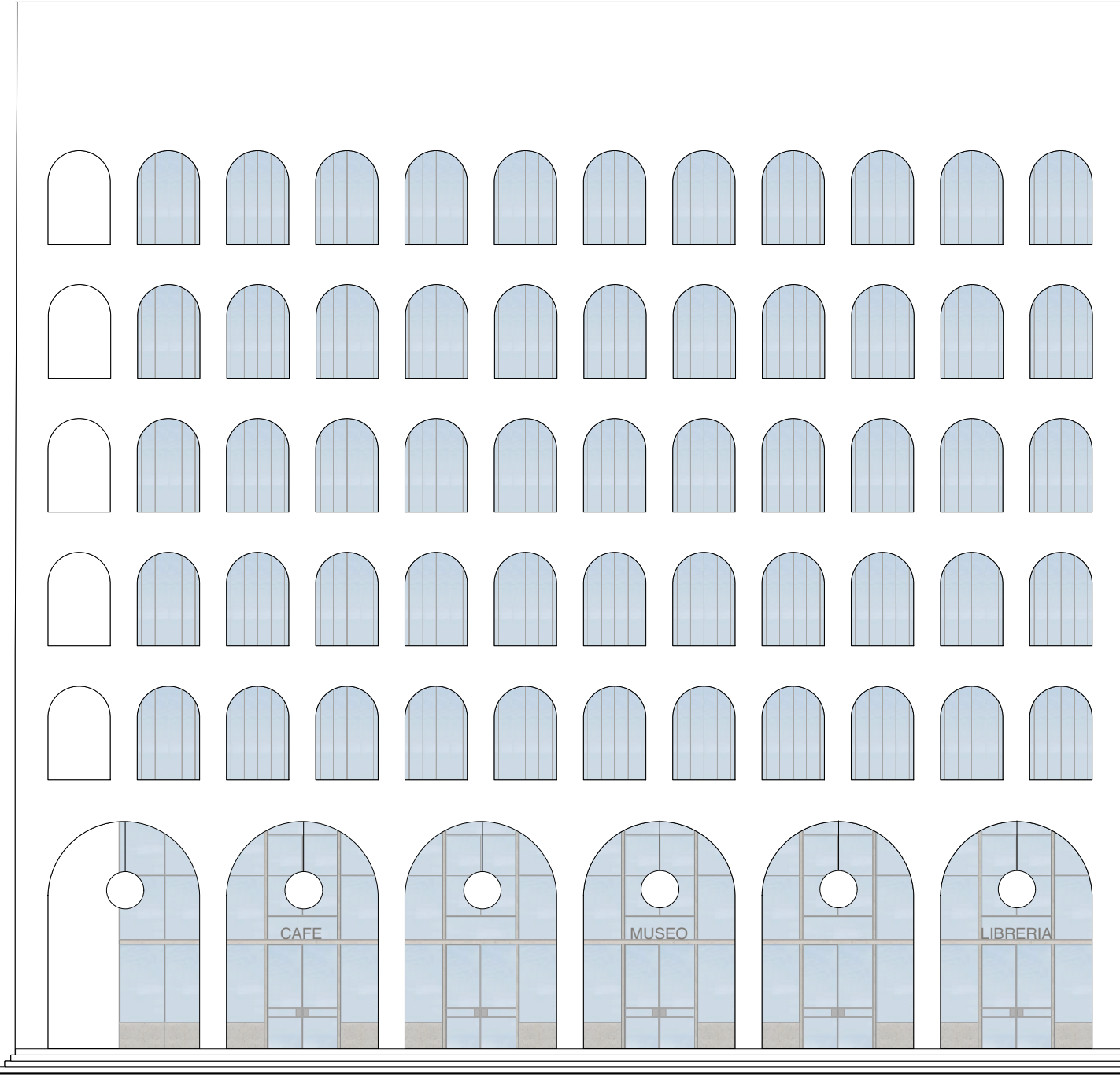
CONCEPT



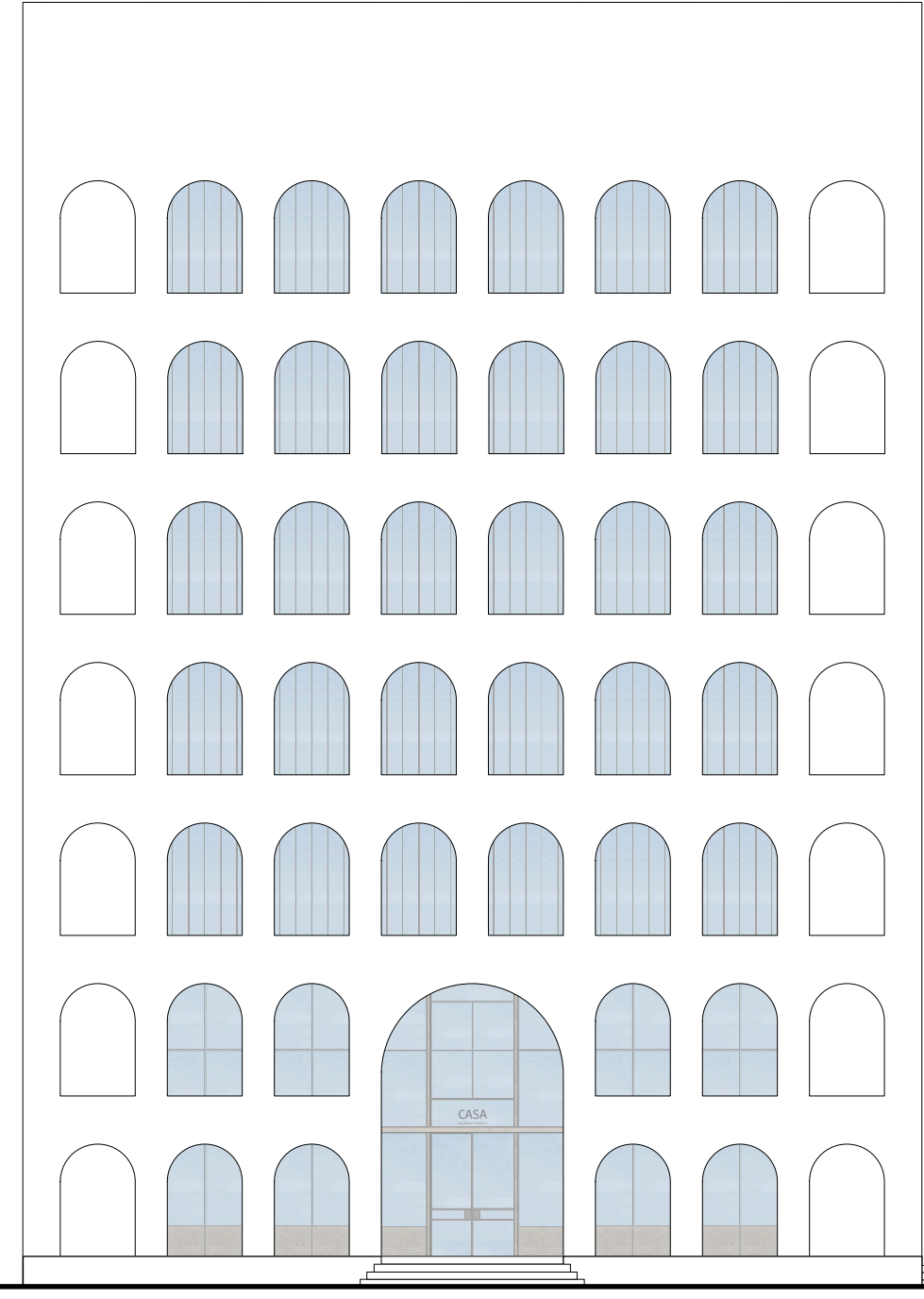
INTROVERT BECOMES EXTRAVERT



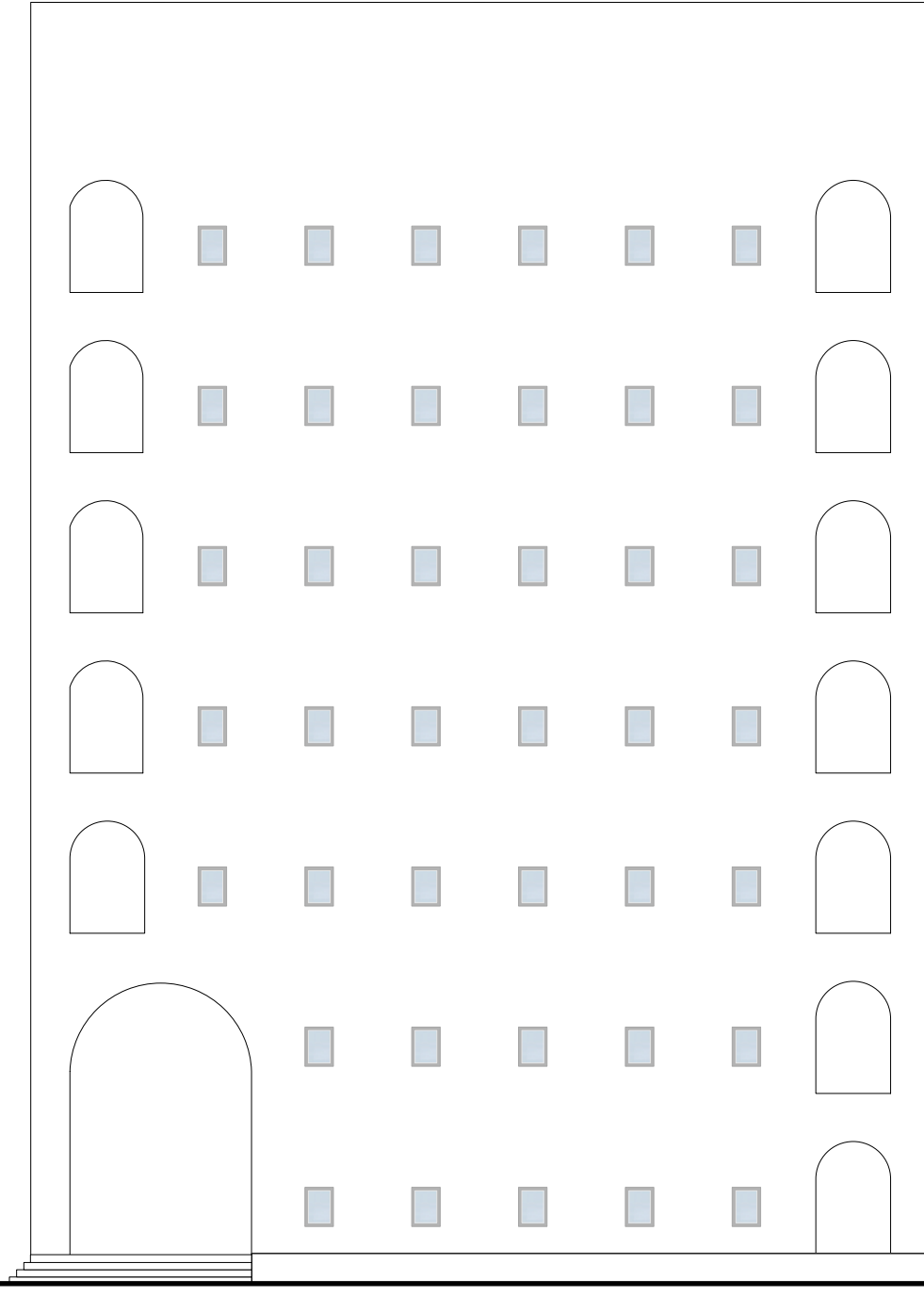
OUTDOOR SPACE WITH PROTECTION FOR HOT ITALIAN SUMMER



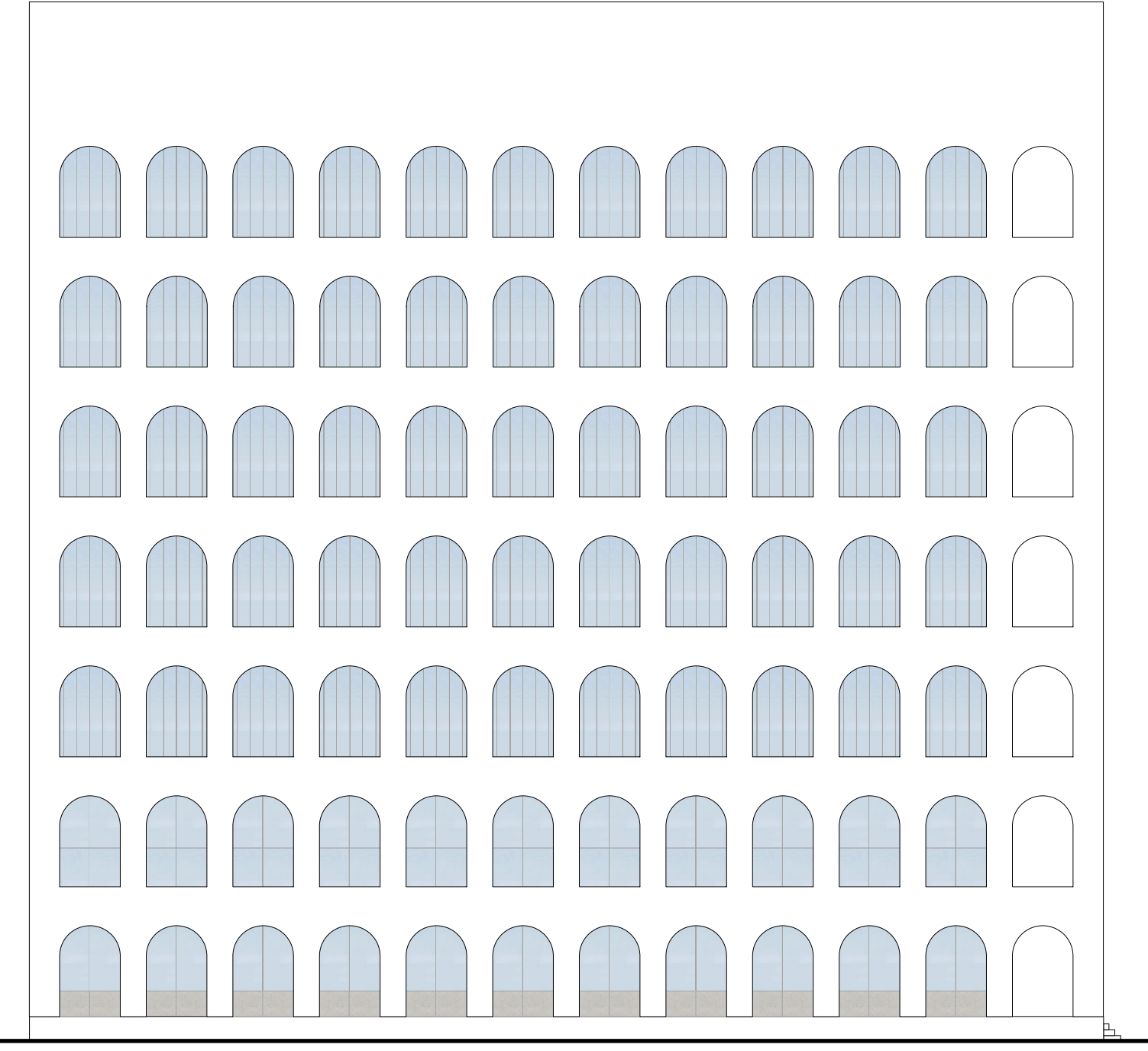
FRONT PIAZZA DEGLI STROZZI  
LOGGIA + PUBLIC ENTRANCE



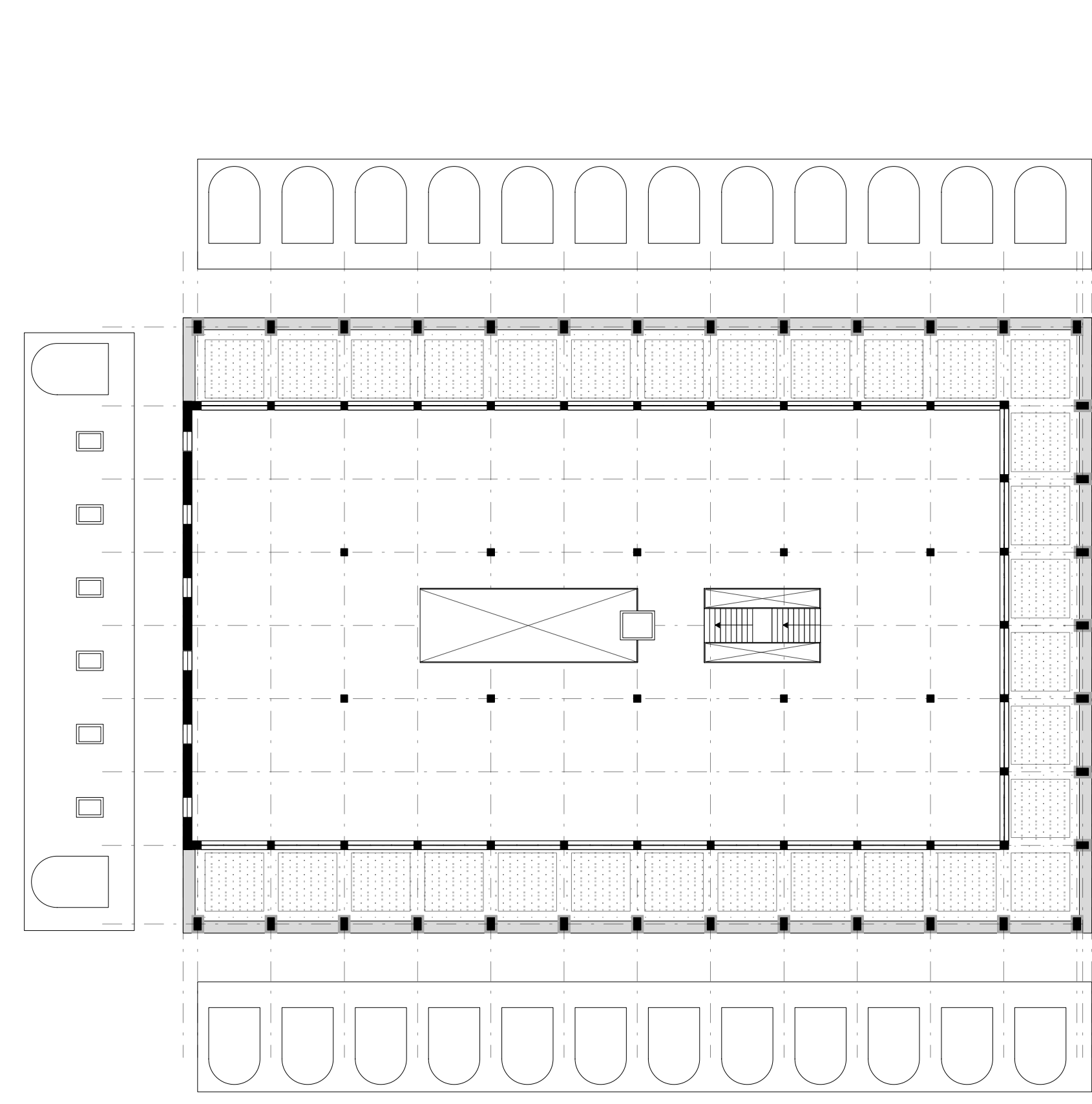
FRONT VIA DEGLI STROZZI  
APARTMENTS PRIVATE ENTRANCE



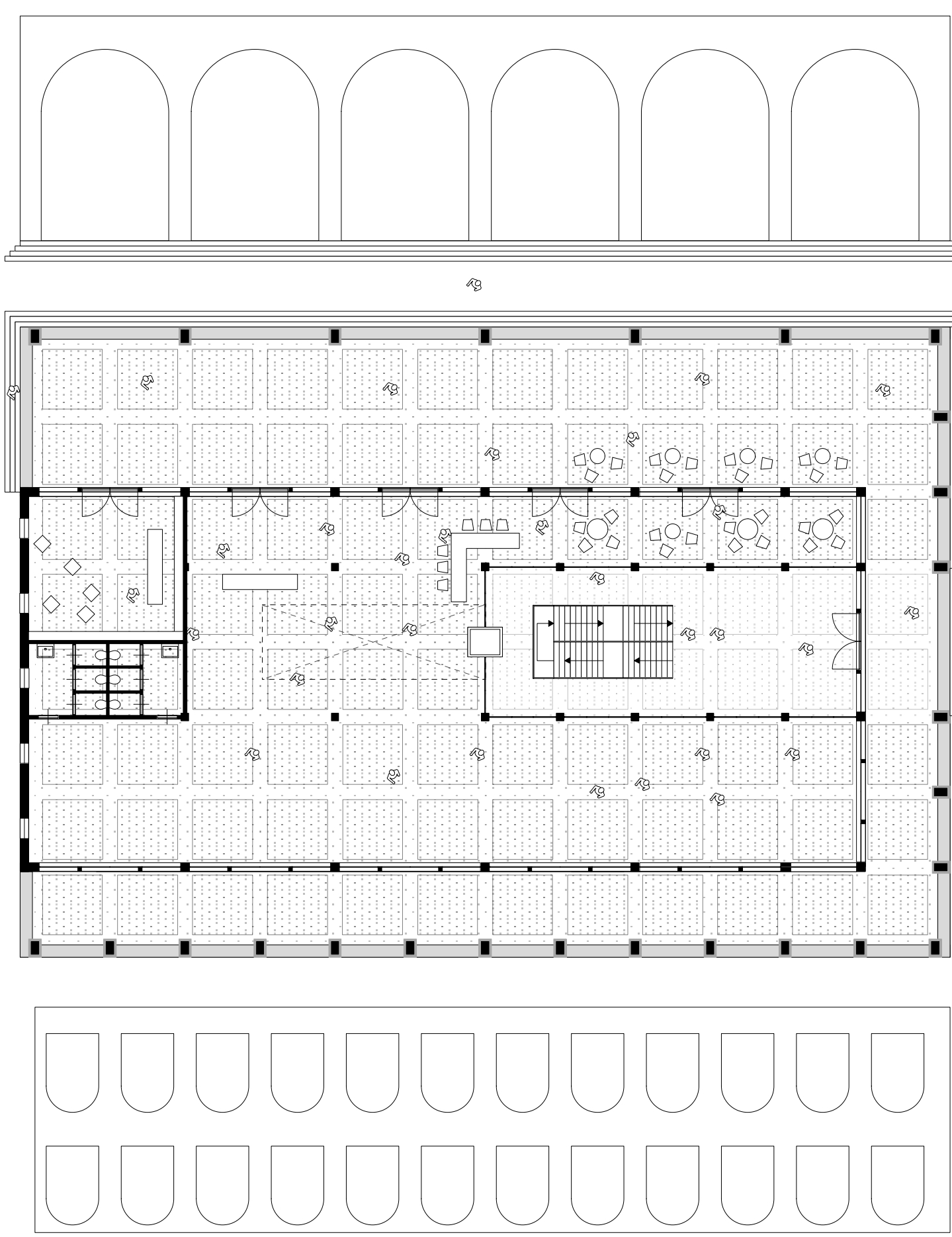
BACK ALLEY + ENTRANCE FROM SQUARE TO LOGGIA



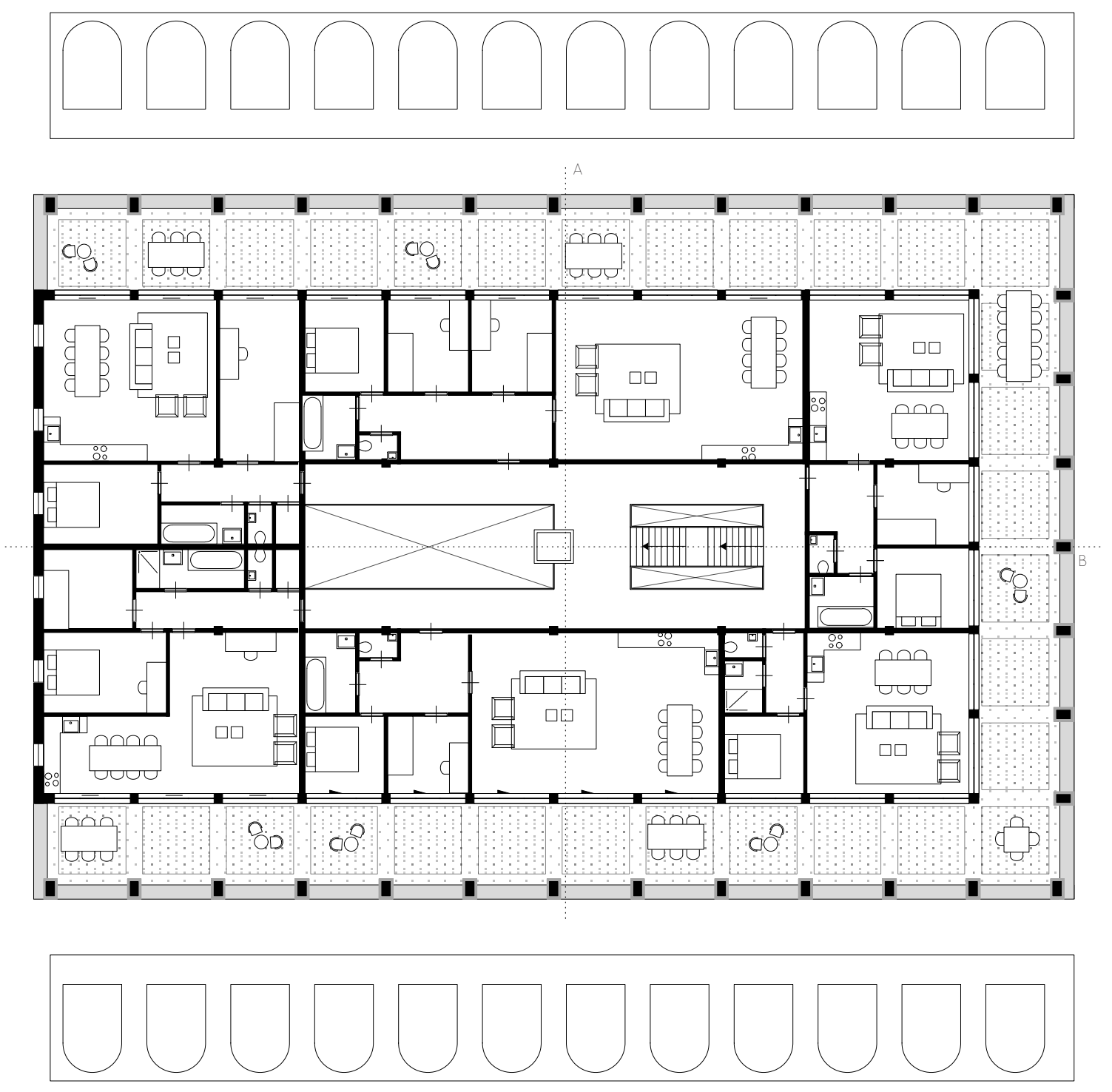
SIDE



BASIC FLOORPLAN SOLID  
3X3 M GRID  
1200



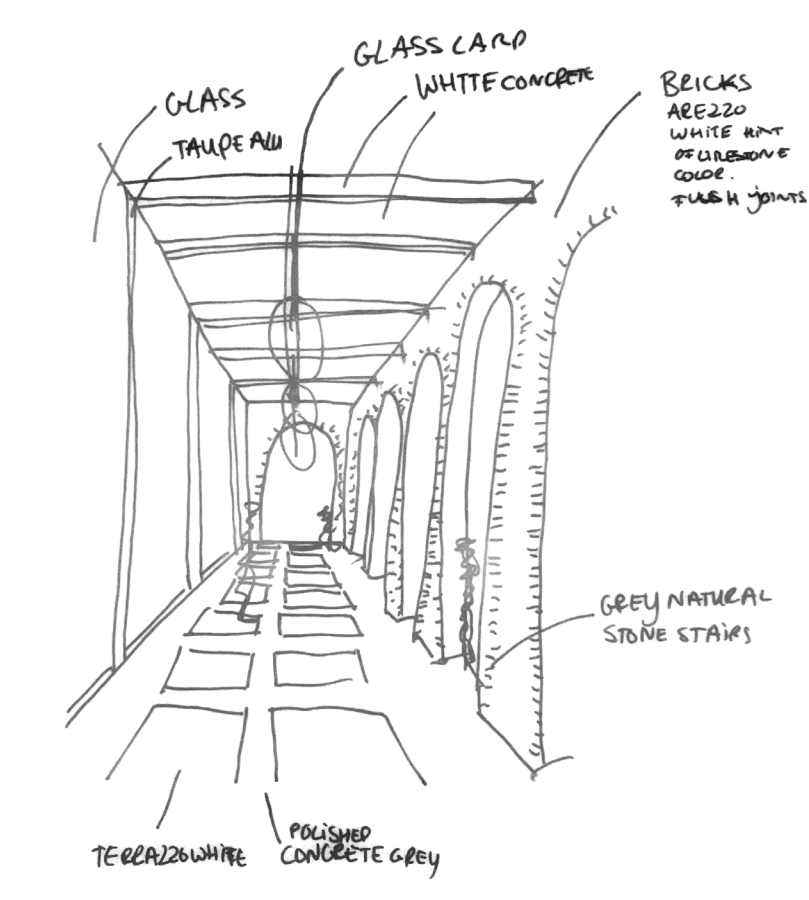
GROUND FLOOR  
PUBLIC AREA WITH PRIVATE ENTRANCE HALL  
1200



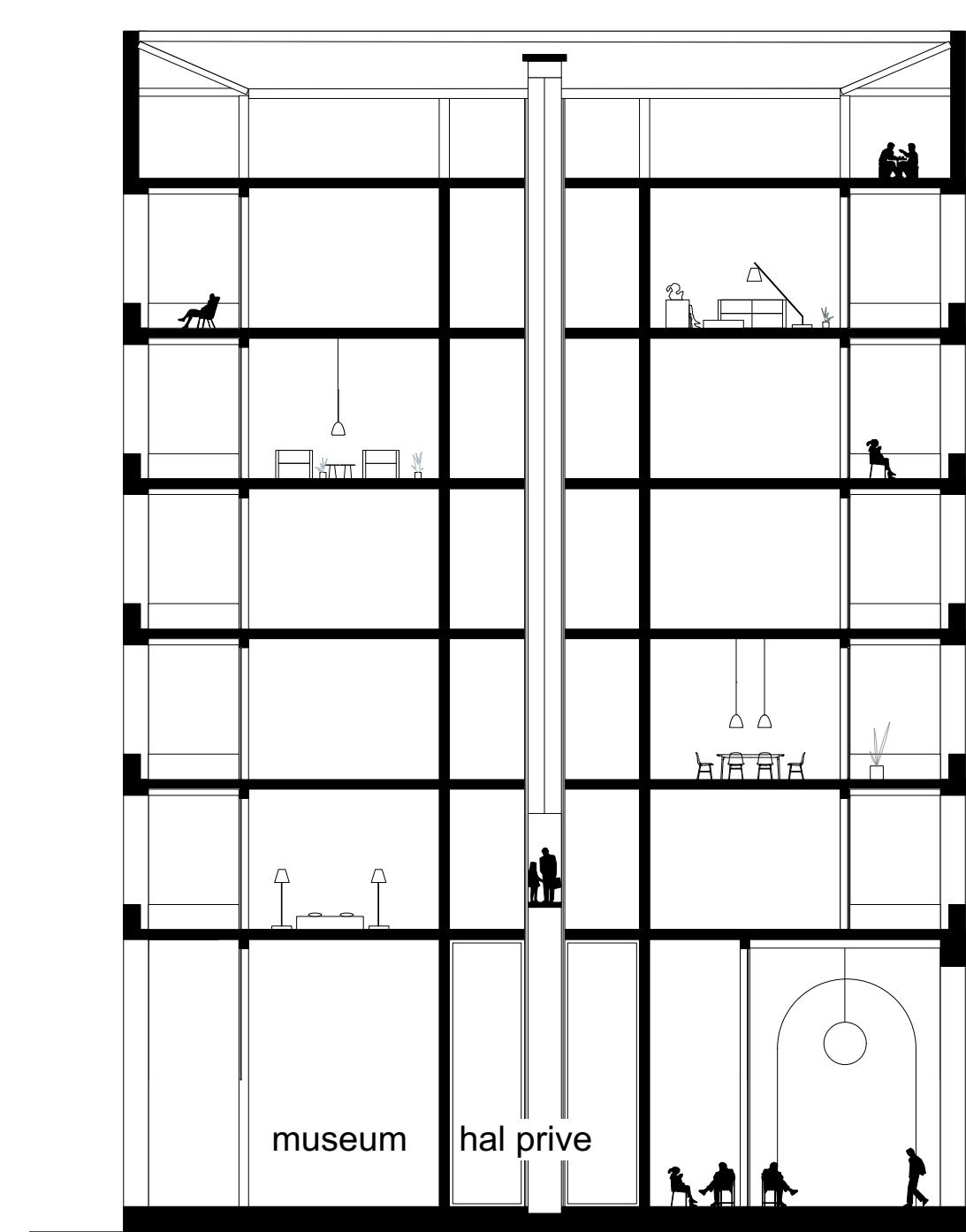
PLAN UPPER FLOORS  
80 x 100 M2 APARTMENTS  
1200



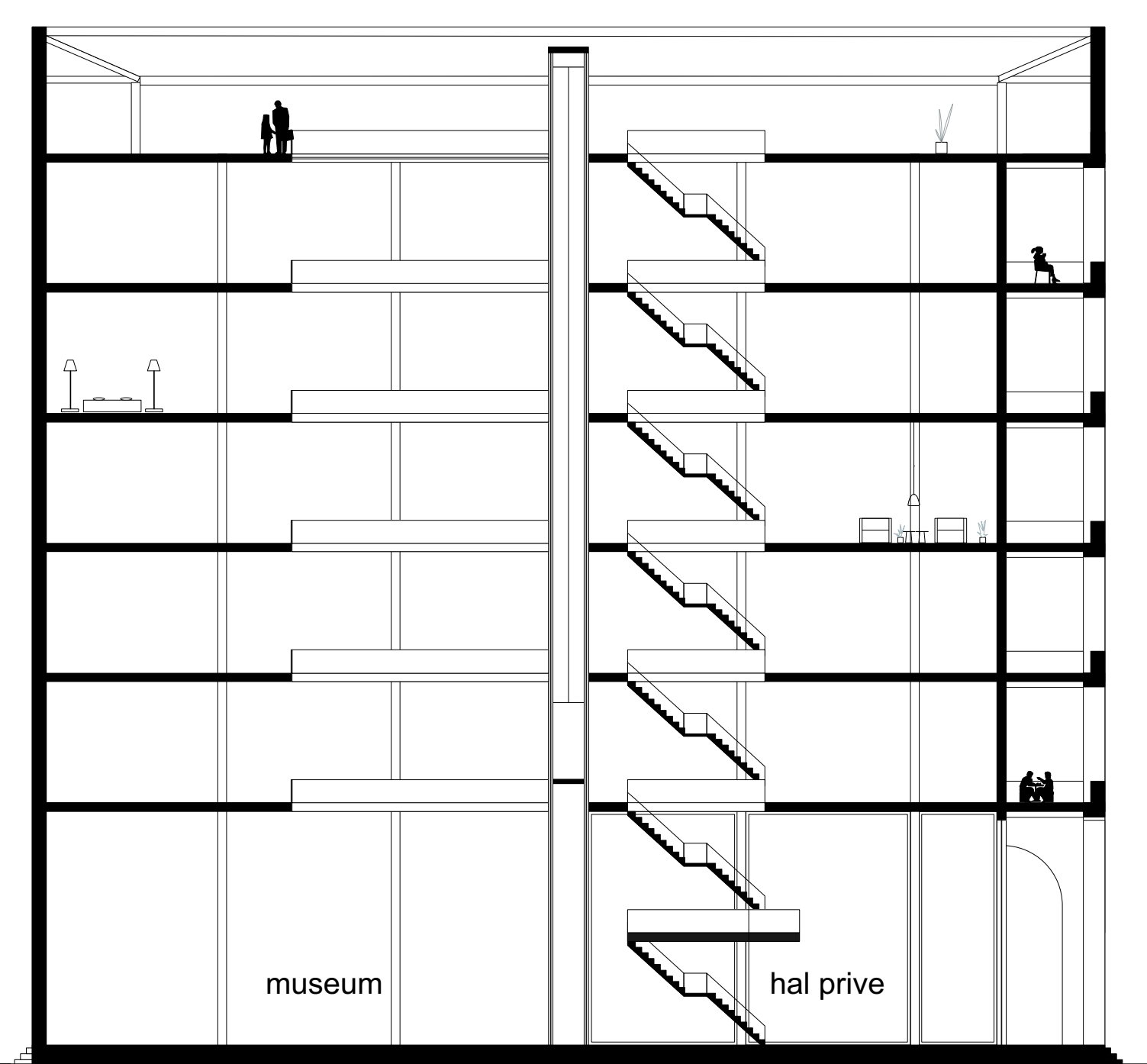
THE PALAZZO HAS THROUGH ITS HUGENESS, IMPACT ON ITS SURROUNDINGS. THE LIME COLOR OF THE BRICKS POINTS TO ITS FLORENCE ROOTS. THE FLUSH JOINTS ARE CHOSEN TO MAKE IT ONE FACADE, BUT WITH TACTILITY, RESPONDING TO THE HUMAN SCALE. THE OPENINGS IN THE BUILDING ARE RELATED IN SCALE TO ITS SURROUNDINGS.



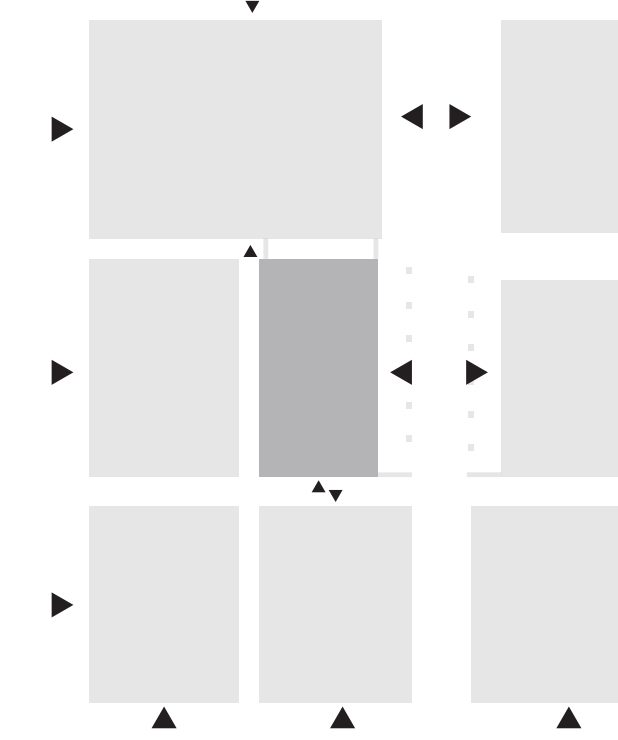
EXPERIENCE LOGGIA  
AN URBAN PUBLIC SPACE TYPICAL FOR FLORENCE



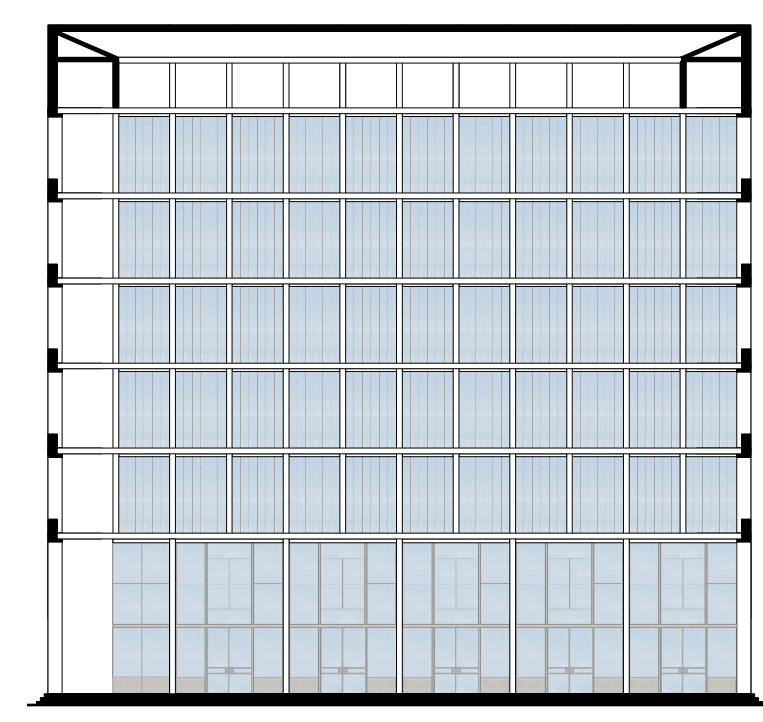
SECTION A  
1200



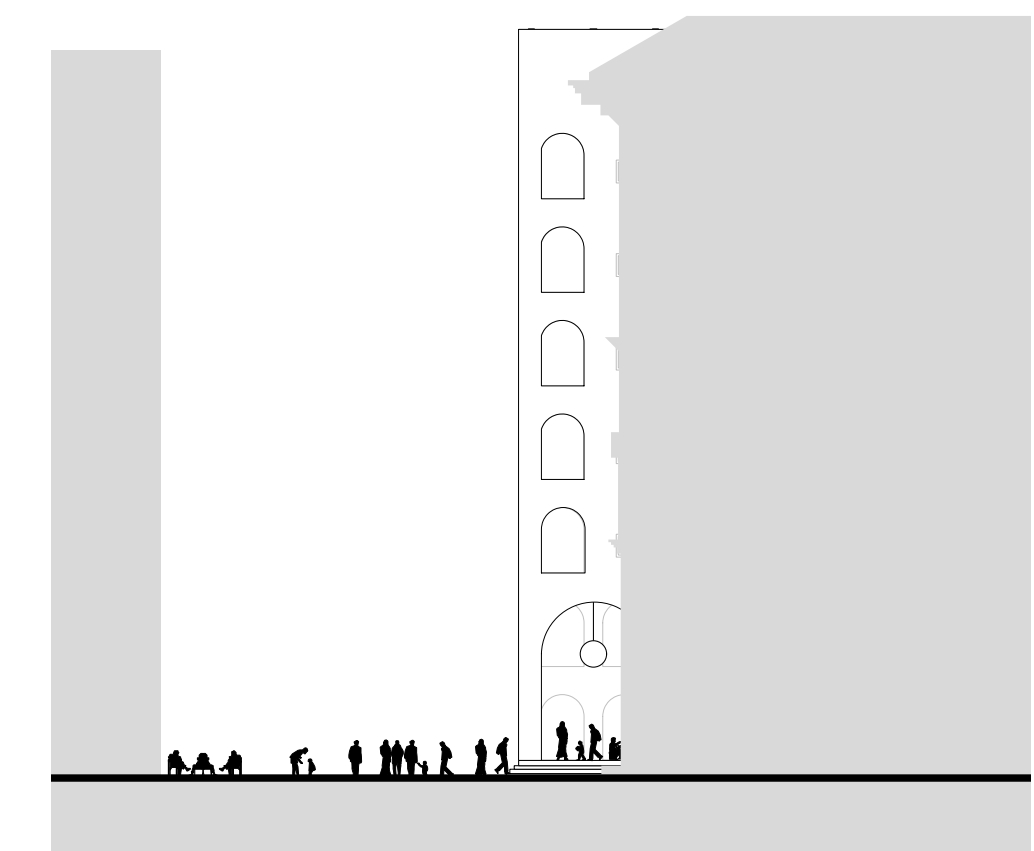
SECTION B  
1200



MAIN AND SUBENTRANCES  
PUBLIC ENTRANCE AT THE SQUARE,  
PRIVATE ENTRANCE IN SIDE STREET



SECOND FACADE  
A GLASS BOX INSIDE THE MEMBRANE



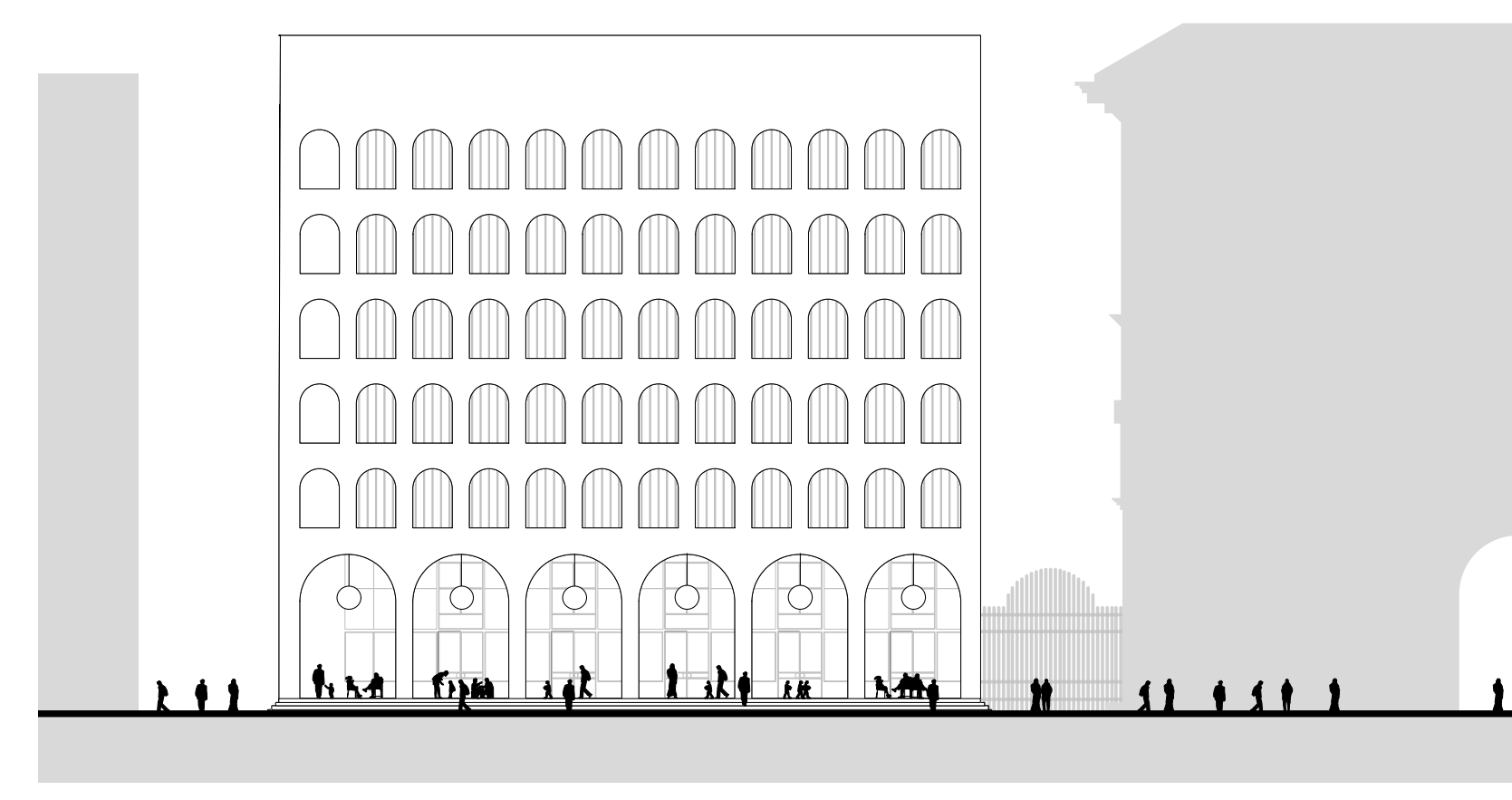
VIEW FROM PIAZZA STROZZI  
THE LOGGIA IS AN EXTENSION OF THE SQUARE.



TON SUR TON WHITE HAMMERSHOL  
A CLEAN AND SOBER COLOR SCHEME, TO ADAPT COLORS FROM ITS SURROUNDINGS.



STROZZI'S NEIGHBOUR, WITH ITS SIDE TOWARDS STROZZI'S BACK, 5TH WALL TOWARDS PIAZZA DEGLI STROZZI. MORE INWARDS URBAN FABRIC, NOT LOCATED ON MAIN STREET.



PROFILE SOUTH-NORTH  
THROUGH ITS BIG SCALE, THE PALAZZO IS AN WORTHY NEIGHBOUR FOR STROZZI