

DURING THE SPAN OF THIS STUDIO EARLY 2018 IT TURNED OUT CAMBRIDGE ANALYTICA INFLUENCED THE PRESIDENTIAL ELECTIONS IN THE UNITED STATES AND THE BREXIT REFERENDUM IN GREAT BRITAIN, A PRIVACY LAW WAS INSTALLED IN THE EUROPEAN UNION, A TESLA CAR CAUSED A FATAL ACCIDENT IN AUTOPILOT MODE, APPLE ANNOUNCED ITS NEW INTERFACES SHOULD CURB USER ADDICTION, IT CAME OUT GOOGLE HELPED OUT THE US MILITARY TO ANALYSE DRONE IMAGES AND THE UTILITIES AGENCY INSTALLED A SMART METER FOR GAS AND ELECTRICS IN MY APARTMENT. THESE ARE JUST A FEW EXAMPLES OF TECHNOLOGY INFLUENCING OUR DAILY LIFE, FROM WHAT HAPPENS IN THE PALM OF ONE'S HAND THROUGH HOW ONE'S COUNTRY IS GOVERNED. DAILY LIFE IS CHANGING DUE TO FAST INCREASING AMOUNTS OF WAVES OF TECHNOLOGY, HAPPENING AT A RATE WE HAVE NEVER SEEN BEFORE LET ALONE HAD TO COPE WITH.

SEN CITY

BLOCK CHAIN TECHNOLOGY IS PART OF THOSE WAVES AND FOUND ITS FIRST APPLICATIONS IN CRYPTO CURRENCIES WITH BITCOIN AS MOST FAMOUS EXAMPLE. IT IS HAILED BY PEOPLE WHO ARE CONSIDERED AUTHORITIES ON THE SUBJECT AS A TECHNOLOGY THAT IS REVOLUTIONARY AND WILL CHANGE, OR DISRUPT, OUR WORLD FUNDAMENTALLY. IN THIS STUDIO 'BLOCK CHAIN SPECULATIONS' WE HAVE A LOOK ON HOW THIS TOOL, WITHOUT PHYSICAL APPEARANCE, COULD GO CHANGE OUR PHYSICAL WORLD. FUNDAMENTAL QUESTION IS; **HOW CAN THIS TOOL BE UTILIZED?**

AMSTERDAM IS SET FOR THIS STUDIO AS LOCATION FOR OUR SPECULATIONS. AN EMERGING PHENOMENON IN AMSTERDAM IS THE 'FRIENDS APARTMENT' BEING OFFERED AS A NEW APARTMENT BY DEVELOPERS. THESE APARTMENTS AREN'T DRAMATICALLY DIFFERENT IN LAYOUT, THEY ARE 2 TO 4 BEDROOM APARTMENTS. THE RENTAL-AGREEMENT IS A NOVICE. AS HOUSING IN AMSTERDAM IS IN EXTREMELY HIGH DEMAND PEOPLE ARE MORE AND MORE WILLING TO SHARE AN APARTMENT. RENTAL AGREEMENTS OF THE 'FRIENDS APARTMENT' ARE ACCOMMODATING SUCH ARRANGEMENTS IN WHICH TRUST IS CRUCIAL. BLOCK CHAIN COULD HELP ORGANIZE SUCH ARRANGEMENTS.

THE 'FRIENDS APARTMENT' SHOWS THAT CO-HOUSING IS ON THE RISE. IT IS A CAREFUL START THOUGH BY DEVELOPERS, OFTEN RELUCTANT TO BUILD SOMETHING WITHOUT BEING ABLE TO CONSULT PAST RESULTS. THIS PROJECT TAKES THE 'FRIENDS APARTMENT' TO THE NEXT LEVEL. **CO HOUSING** PROJECTS AROUND THE WORLD SHOW THAT THE ORGANISATION OF COMMONS SPACES ARE IMPORTANT AND SHARED DINNERS ARE CRUCIAL FOR A STRONG COMMUNITY. A SHARED KITCHEN THEREFOR IS THE HEART OF THIS PROJECT.

THIRD GENERATION BLOCK CHAIN ALLOWS SEPARATE BLOCK CHAINS TO COMMUNICATE. BLOCK CHAIN HOUSEHOLDS CAN ORGANIZE THE SHARED KITCHEN AND THROUGHOUT TIME MAKE CONNECTIONS THAT EXTEND BEYOND THEIR UNIT, BUILDING AND UP. BLOCK CHAIN CAN SO BECOME A TOOL TO GOVERN THE COMMONS KEEPING A BALANCE OF WHAT PEOPLE ADD AND EXTRACT FROM THEIR COMMUNITIES. FROM SOLAR ENERGY AND GROCERIES UP TO MORE ABSTRACT CONTRIBUTIONS SUCH AS WATCHING AFTER CHILDREN OR TAKING CARE OF ELDERLY.

NOBEL PRIZE WINNER ELINOR OSTROM FOUND **EIGHT PRINCIPALS FOR GOVERNING THE COMMONS.** THESE PRINCIPALS CAN BE USED AS FOUNDATION FOR THE APPLICATION OF BLOCK CHAIN;

1. DEFINE CLEAR GROUP BOUNDARIES.
2. MATCH RULES GOVERNING USE OF COMMON GOODS TO LOCAL NEEDS AND CONDITIONS.
3. ENSURE THAT THOSE AFFECTED BY THE RULES CAN PARTICIPATE IN MODIFYING THE RULES.
4. MAKE SURE THE RULE-MAKING RIGHTS OF COMMUNITY MEMBERS ARE RESPECTED BY OUTSIDE AUTHORITIES.
5. DEVELOP A SYSTEM, CARRIED OUT BY COMMUNITY MEMBERS, FOR MONITORING MEMBERS' BEHAVIOUR.
6. USE GRADUATED SANCTIONS FOR RULE VIOLATORS.
7. PROVIDE ACCESSIBLE, LOW-COST MEANS FOR DISPUTE RESOLUTION.
8. BUILD RESPONSIBILITY FOR GOVERNING THE COMMON RESOURCE IN NESTED TIERS FROM THE LOWEST LEVEL UP TO THE ENTIRE INTERCONNECTED SYSTEM.

WHAT GOES IN THE BLOCK CHAIN HAS TO BE DEBATED CAREFULLY. DEBATES THAT ESSENTIALLY DEFINE VALUE FOR THE COMMUNITY BUT, EQUALLY IMPORTANT, THE **SENSE & NONSENSE** OF APPLYING BLOCK CHAIN AND TECHNOLOGY AS A WHOLE. EVERY BUILDING THEREFOR HAS A **SALON** WHERE AN ONGOING DEBATE TAKES PLACE. THESE CAREFULLY DEBATED COMMUNICATING BLOCK CHAINS CAN GROW, BOTTOM UP, INTO AN INTERCONNECTED EXCHANGE SYSTEM OF BLOCK CHAINS, FROM APARTMENT LEVEL THROUGH UNIT LEVEL, BUILDING LEVEL, INTER-BUILDING LEVEL, TO CITY LEVEL AND UP.

THE SALONS HAVE TO MAKE SURE TECHNOLOGY IS EMBRACED BUT APPLIED **SENSIBLE**, WITH HUMANITY AS CORE, AND WILL SO BE THE FOLLOW UP OF THE SMART CITY; **SEN CITY**. WITH THIS GROWING NETWORK EXCHANGES WILL BECOME EVEN MORE AUTOMATED AND ABSTRACT AND SO THE WHOLE CONCEPT OF MONEY WILL DISAPPEAR.

TECHNOLOGY



SYMBOL PROPOSAL FOR THE SEN CITY SALON

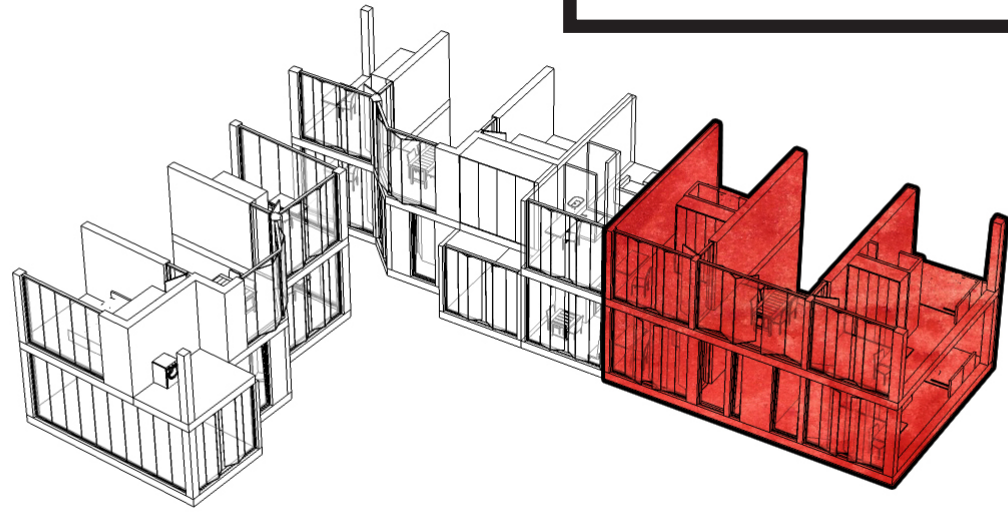
APPLY TECHNOLOGY BUT KEEP HUMANITY AT THE CORE

HUMANITY

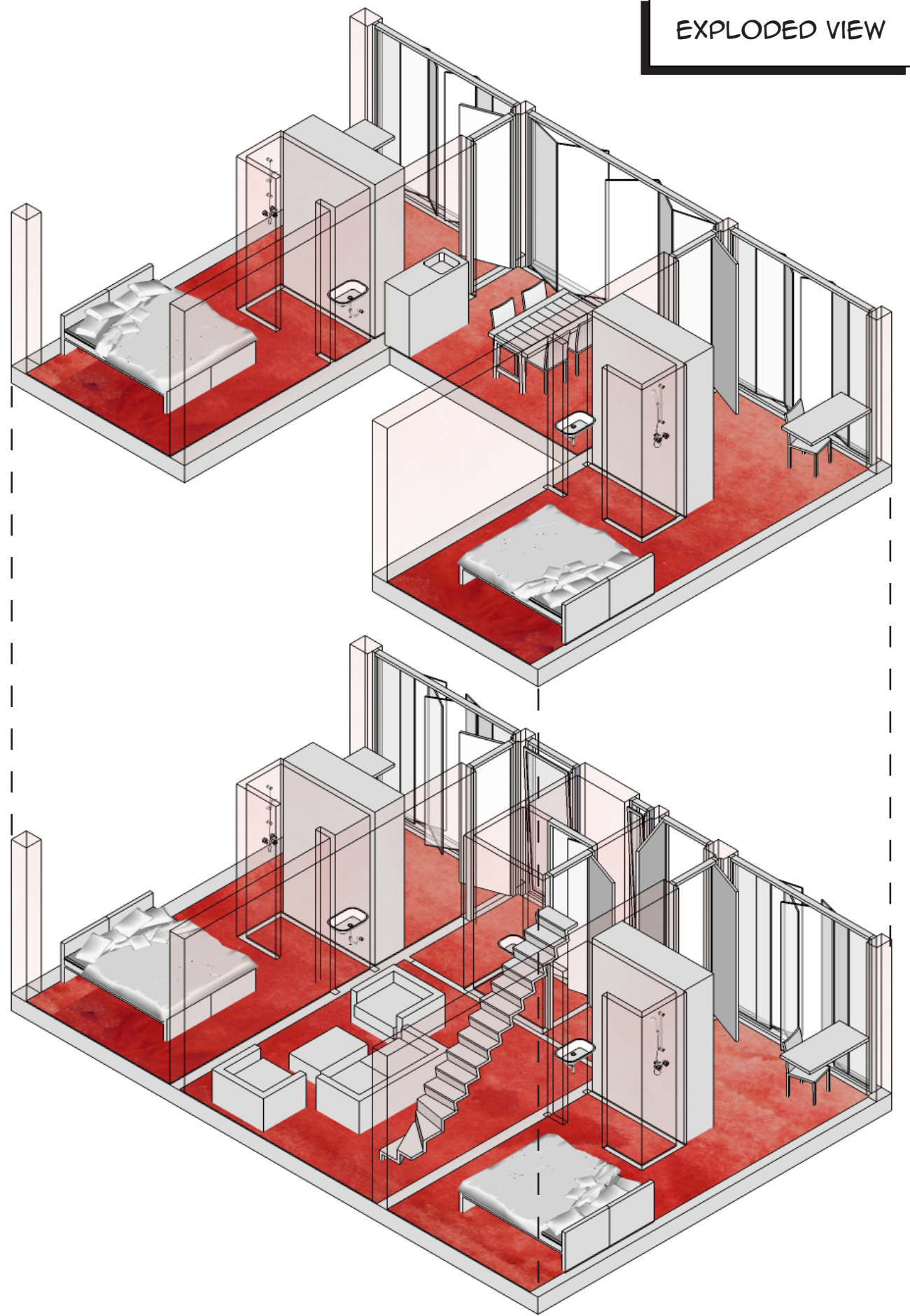


A TIMELINE OF TECHNOLOGY AND EXCHANGE

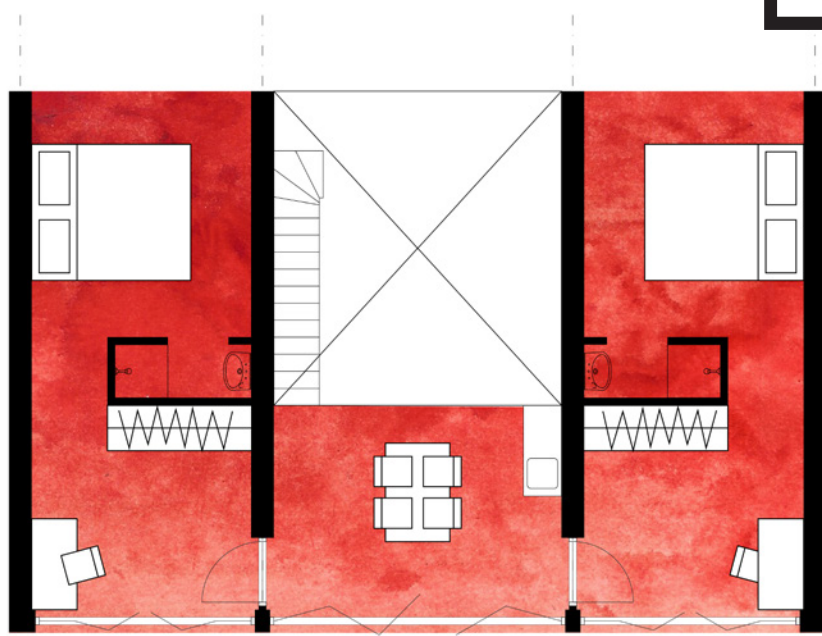
POSITION IN COMMON UNIT



EXPLODED VIEW

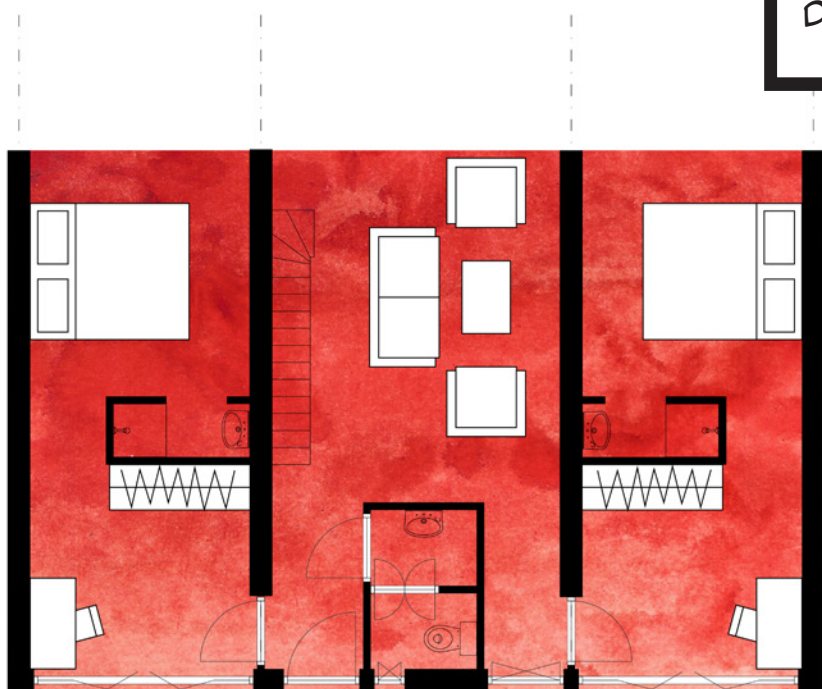


UPSTAIRS



1:100

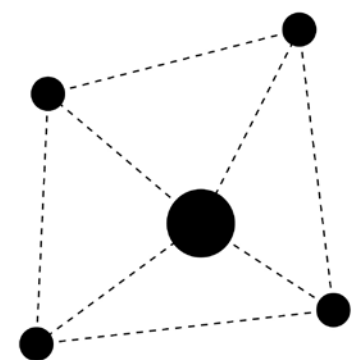
DOWNSTAIRS



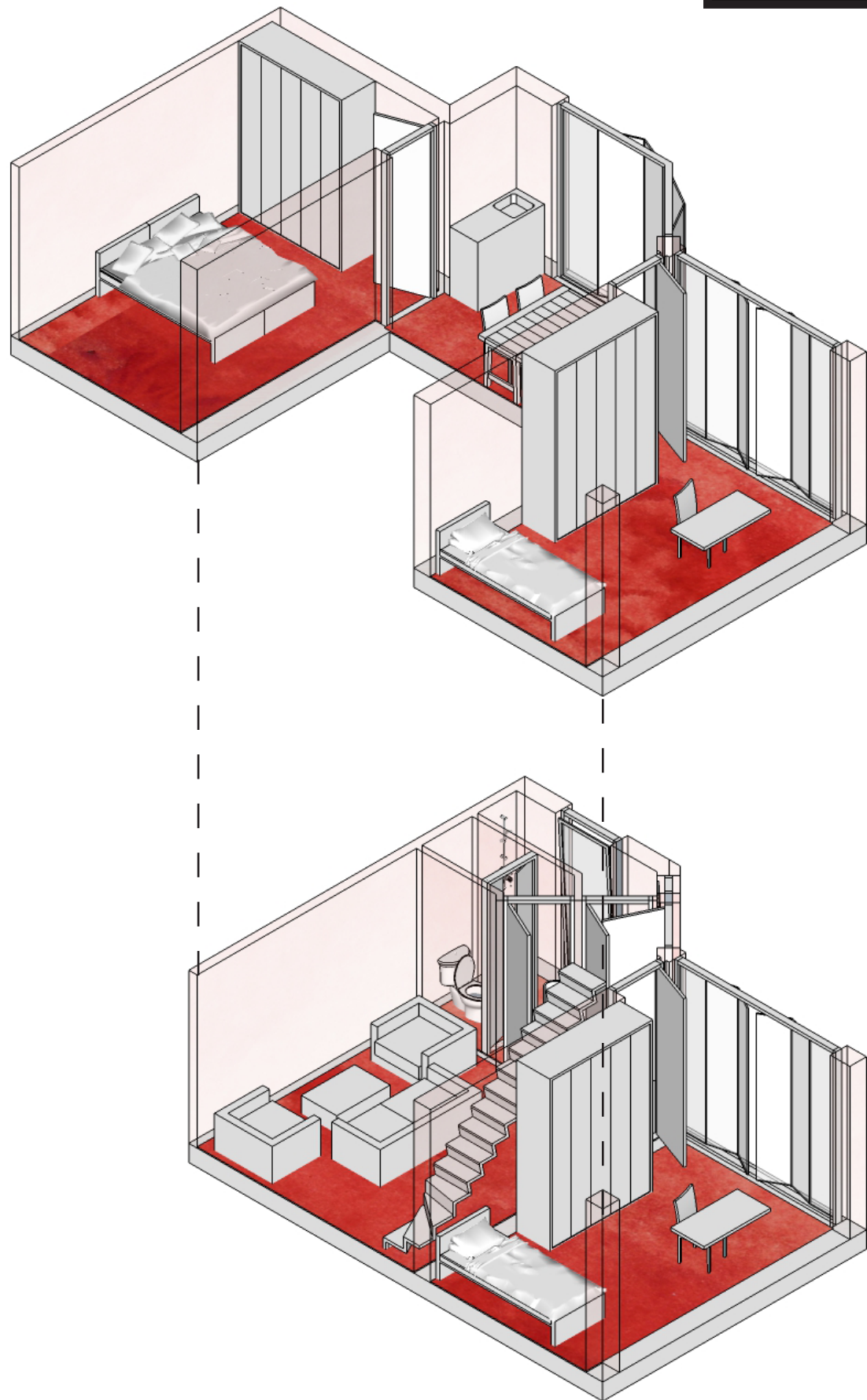
1:100

**FRIENDS
APARTMENT**

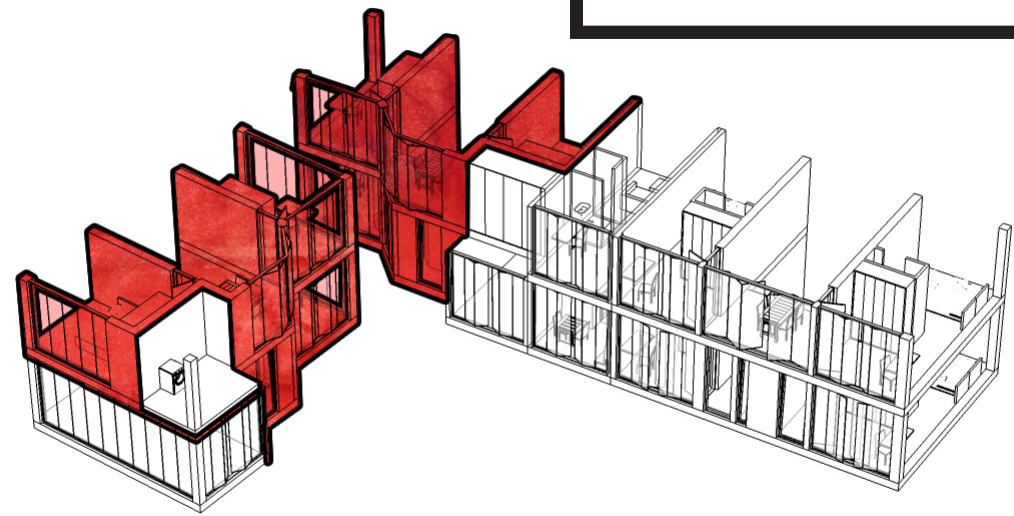
A FOUR BEDROOM APARTMENT, WITHOUT A KITCHEN AND WITHOUT A STORAGE ROOM OFFERS ROOM TO FOUR INDIVIDUALS THAT CHOOSE TO LIFE TOGETHER. THE LIVING ROOM SPANS OVER 2 STORIES TO GIVE THE INHABITANTS A THE SENSE THEY ARE IN A SPACIOUS APARTMENT.



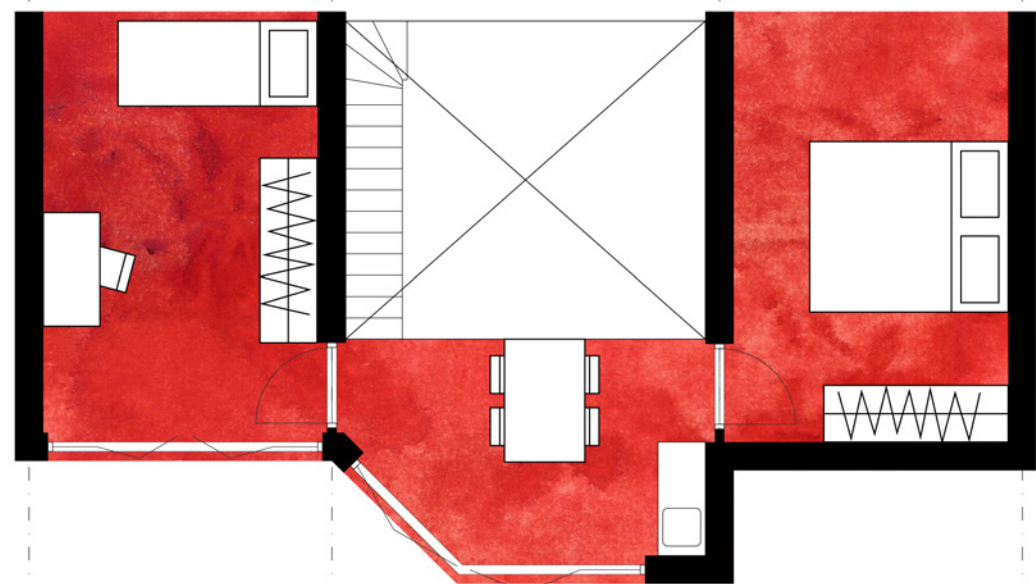
EXPLODED VIEW



POSITION IN COMMON UNIT



UPSTAIRS

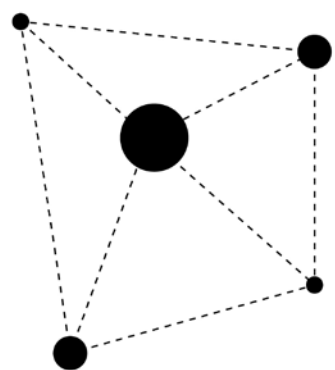


1:100

DOWNSTAIRS



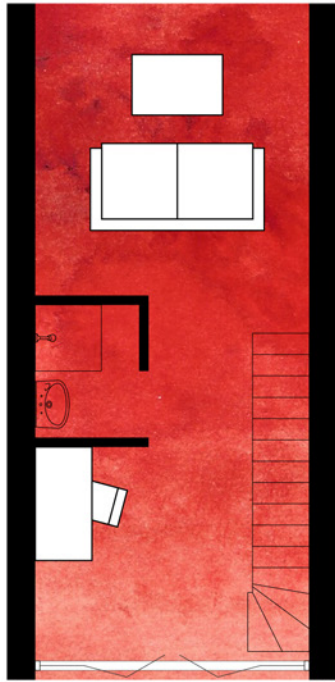
1:100



FAMILY APARTMENT

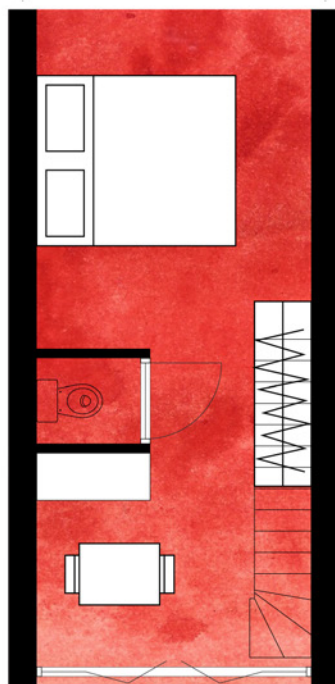
A THREE BEDROOM APARTMENT, WITHOUT A KITCHEN AND WITHOUT A STORAGE ROOM OFFERS ROOM TO A FAMILY OF TWO. THE LIVING ROOM SPANS OVER 2 STORIES TO GIVE THE FAMILY THE SENSE THEY ARE IN A SPACIOUS APARTMENT. THE APARTMENT SHARES A SPACE WITH THE NEIGHBOURING FAMILY APARTMENT, SPACE THAT CAN BE USED TO PLAY FOR CHILDREN, LEAVE A STROLLER OR MUDDY CLOTHES.

LIPSTAIRS



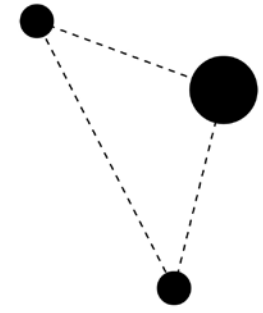
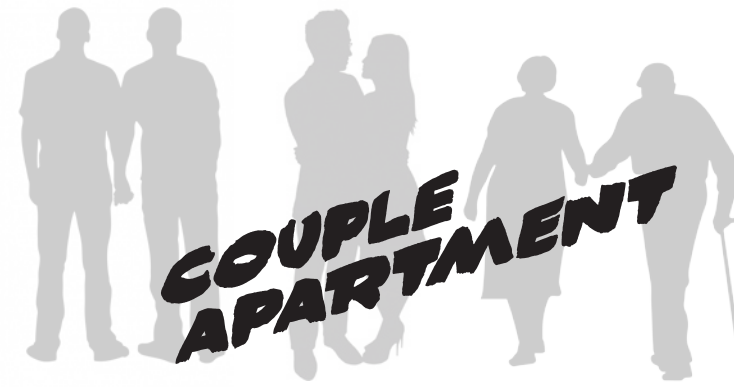
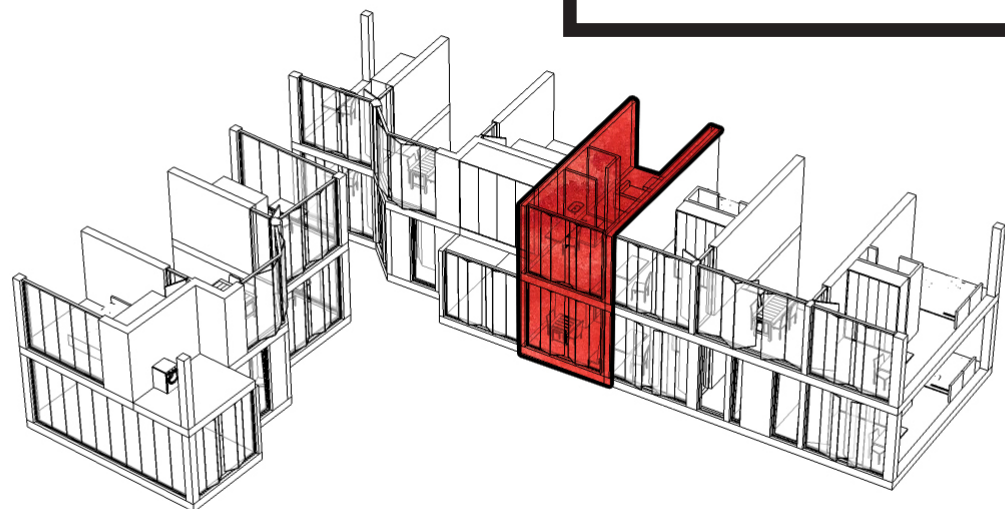
1:100

DOWNSTAIRS



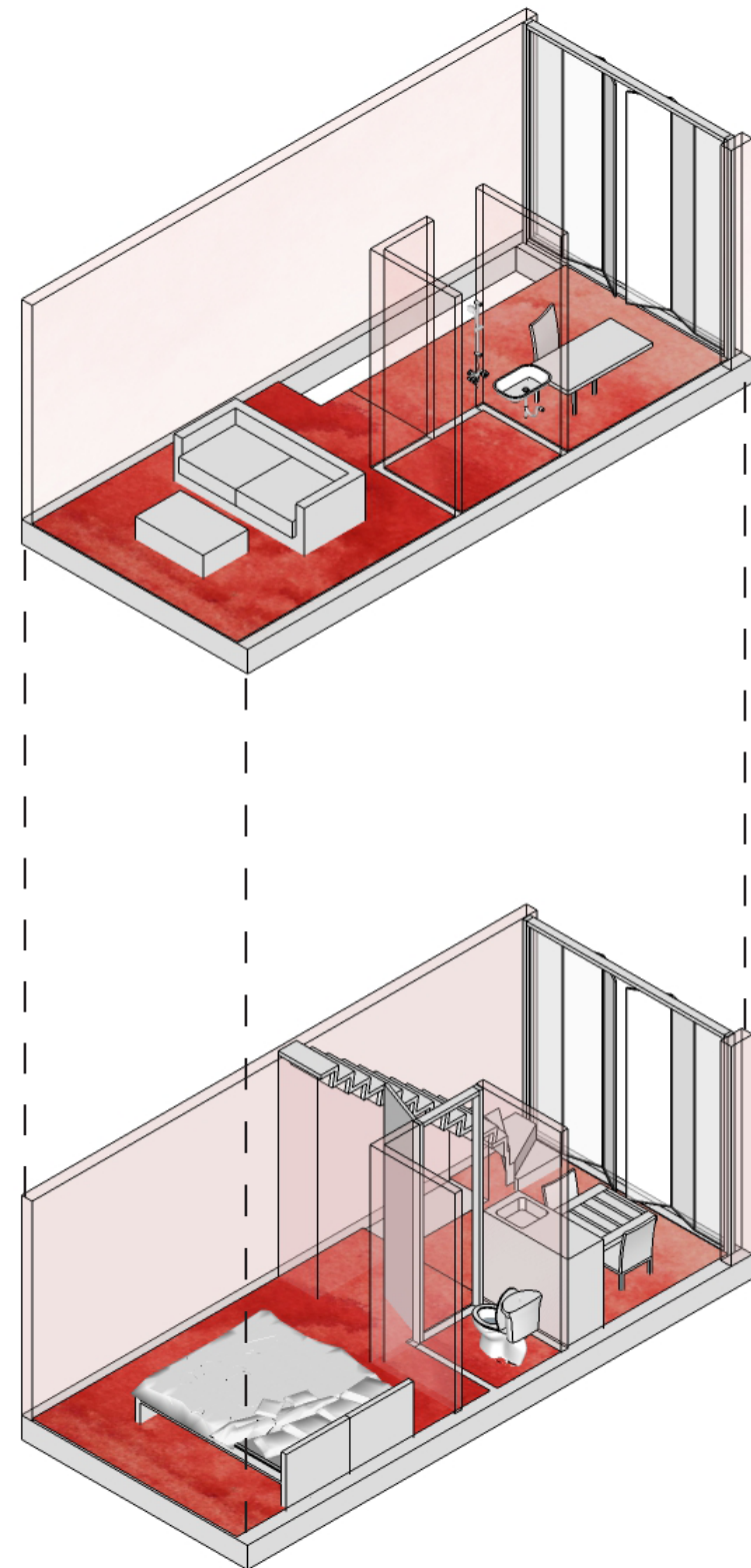
1:100

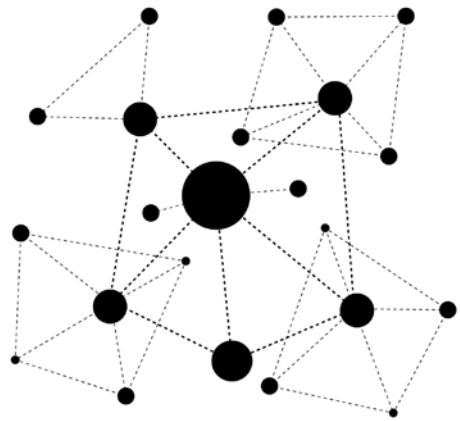
POSITION IN COMMON UNIT



A ONE BEDROOM APARTMENT, WITHOUT A KITCHEN AND WITHOUT A STORAGE ROOM OFFERS ROOM TO A COUPLE, YOUNG OR OLD.

EXPLODED VIEW





COMMON UNIT

SLIDE

PLAY AREA

STORAGE ROOM

FREE SPACE

APPLIANCES

LAUNDRY ROOM

DINING AREA

APPLIANCES

ELEVATORS

CENTRAL STAIRCASE

FREE SPACE

EXAMPLES:

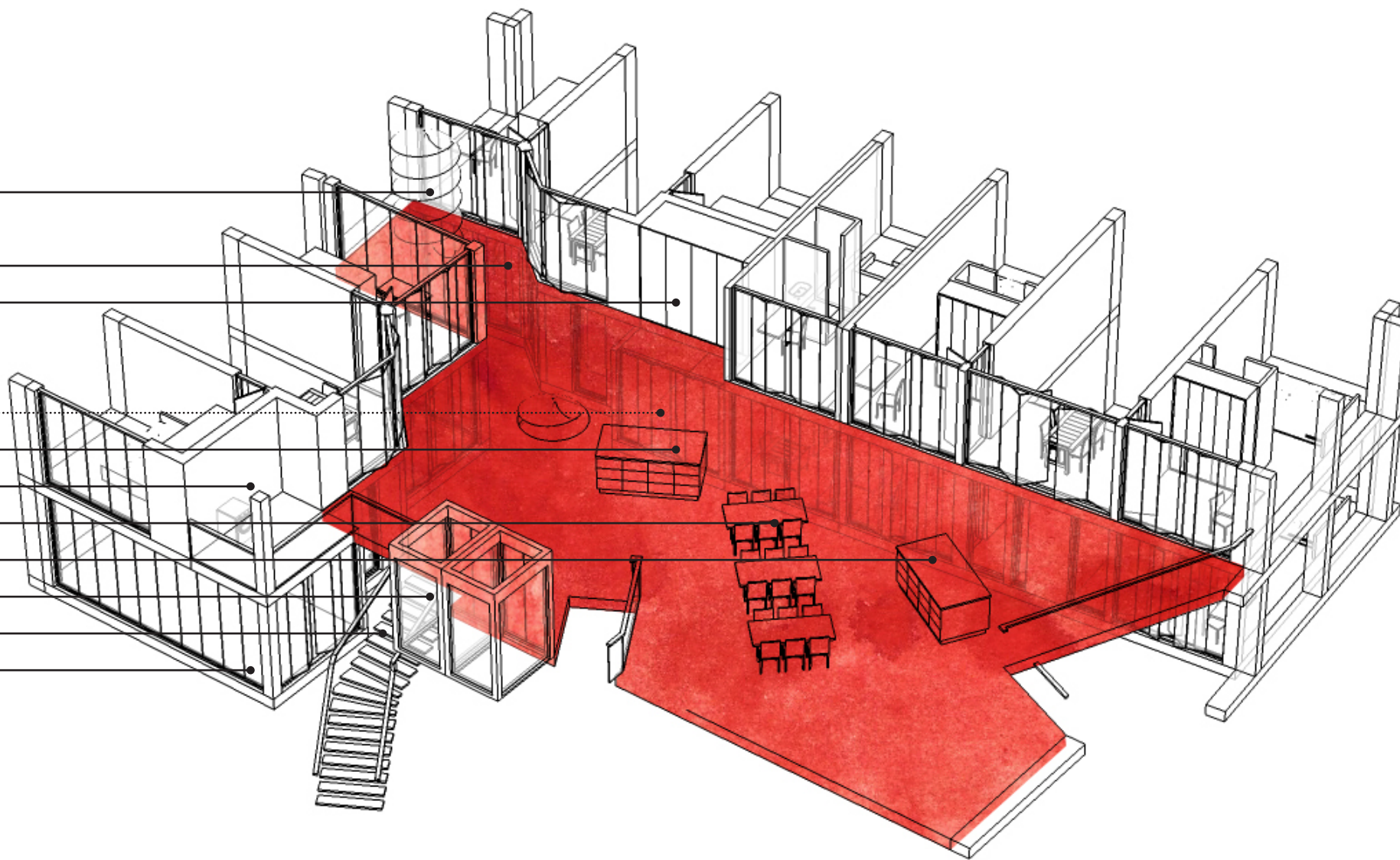
ART STUDIO, FITNESS AREA, BREWERY, GUEST ROOM,

AIRBNB, HERBAL GARDEN, MEDITATION ROOM,

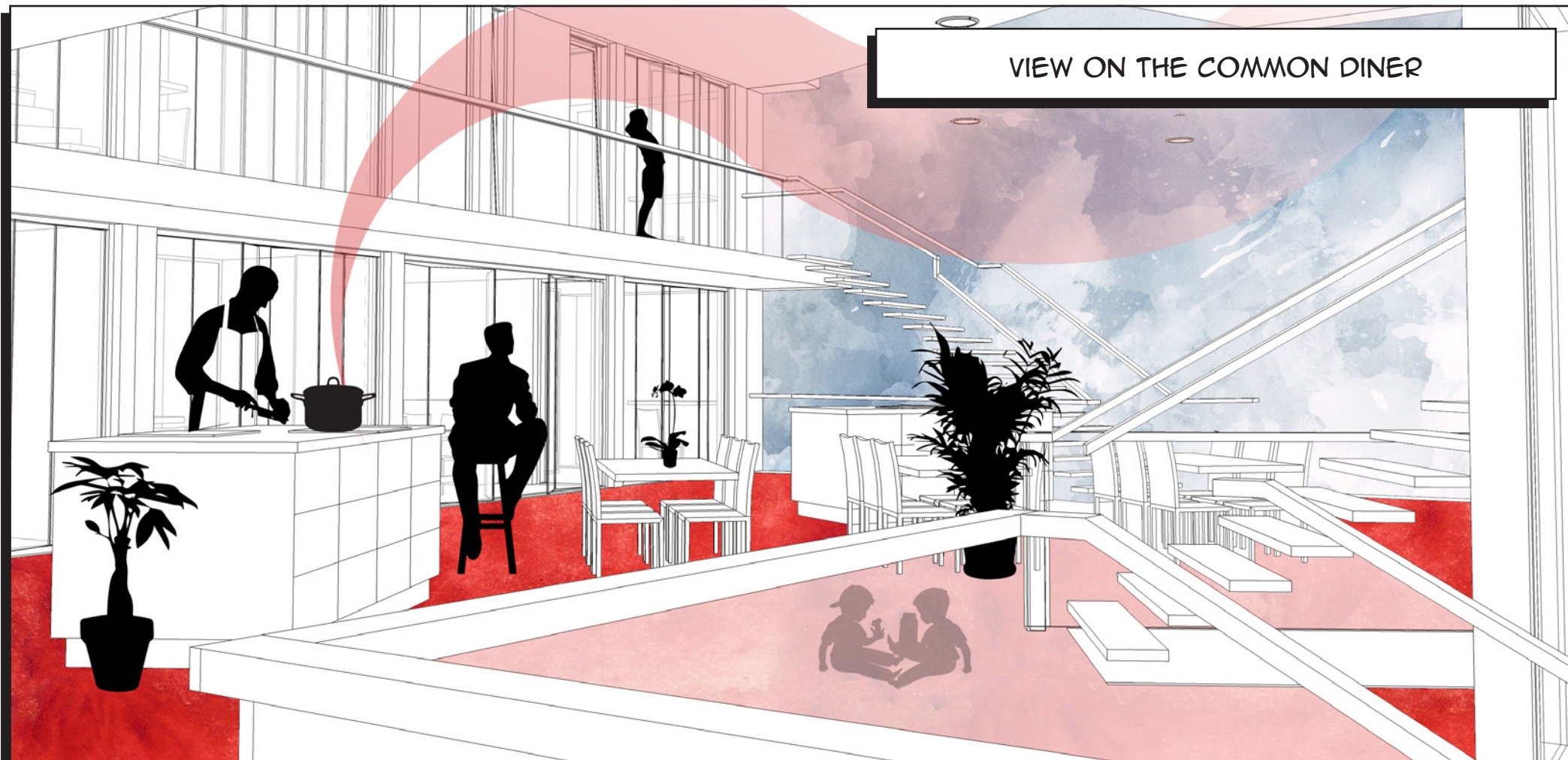
MUSIC ROOM

EVERY COMMON UNIT CONTAINS TWO FAMILY APARTMENTS, ONE COUPLE AND ONE FRIENDS APARTMENT. THEY SHARE A DINER WITH PROPER APPLIANCES, A STORAGE ROOM AND A LAUNDRY ROOM. THERE ARE TWO FREE SPACES WHICH CAN BE USED ACCORDING TO LOCAL NEEDS AND DEMANDS.

FEATURES OF THE COMMON UNIT



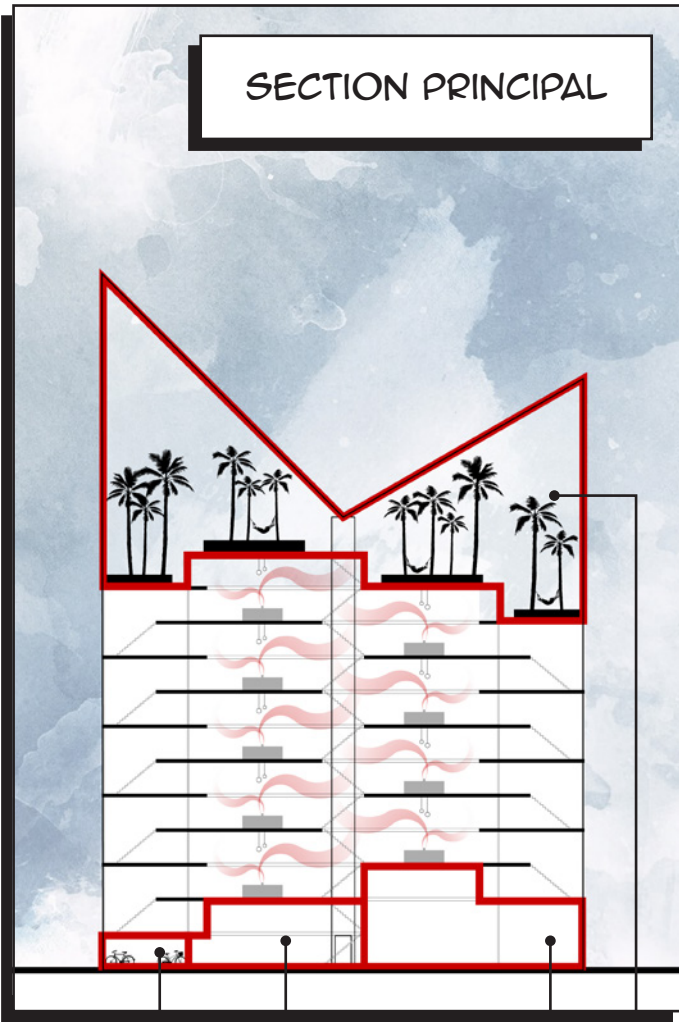
VIEW ON THE COMMON DINER



SECTION PRINCIPAL



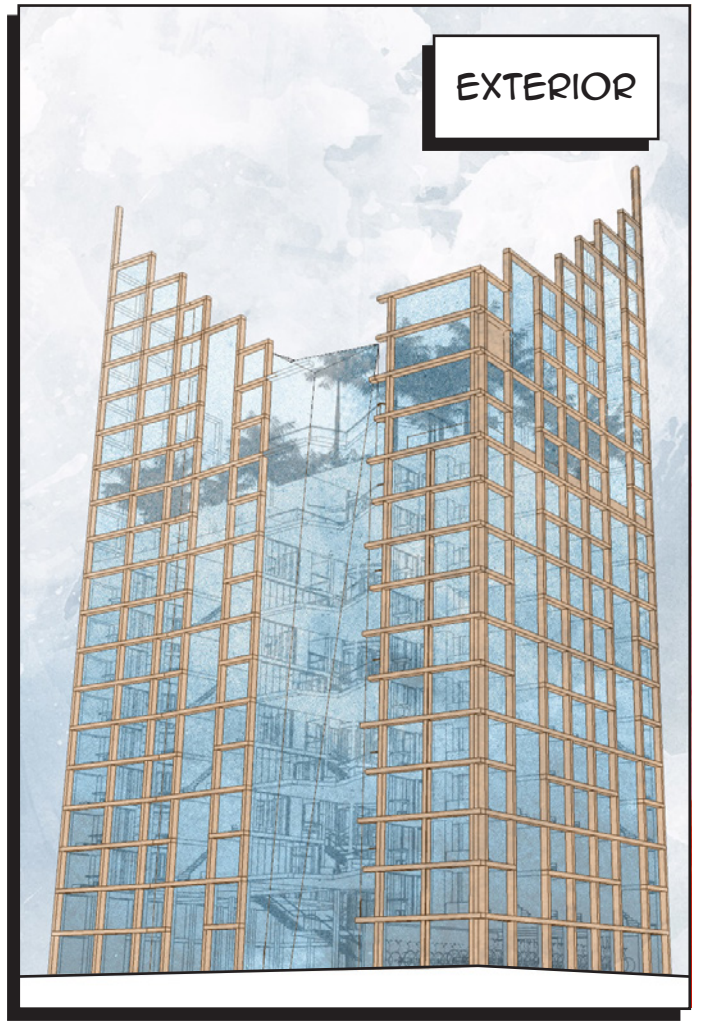
SECTION PRINCIPAL



VIEW FROM BALCONY

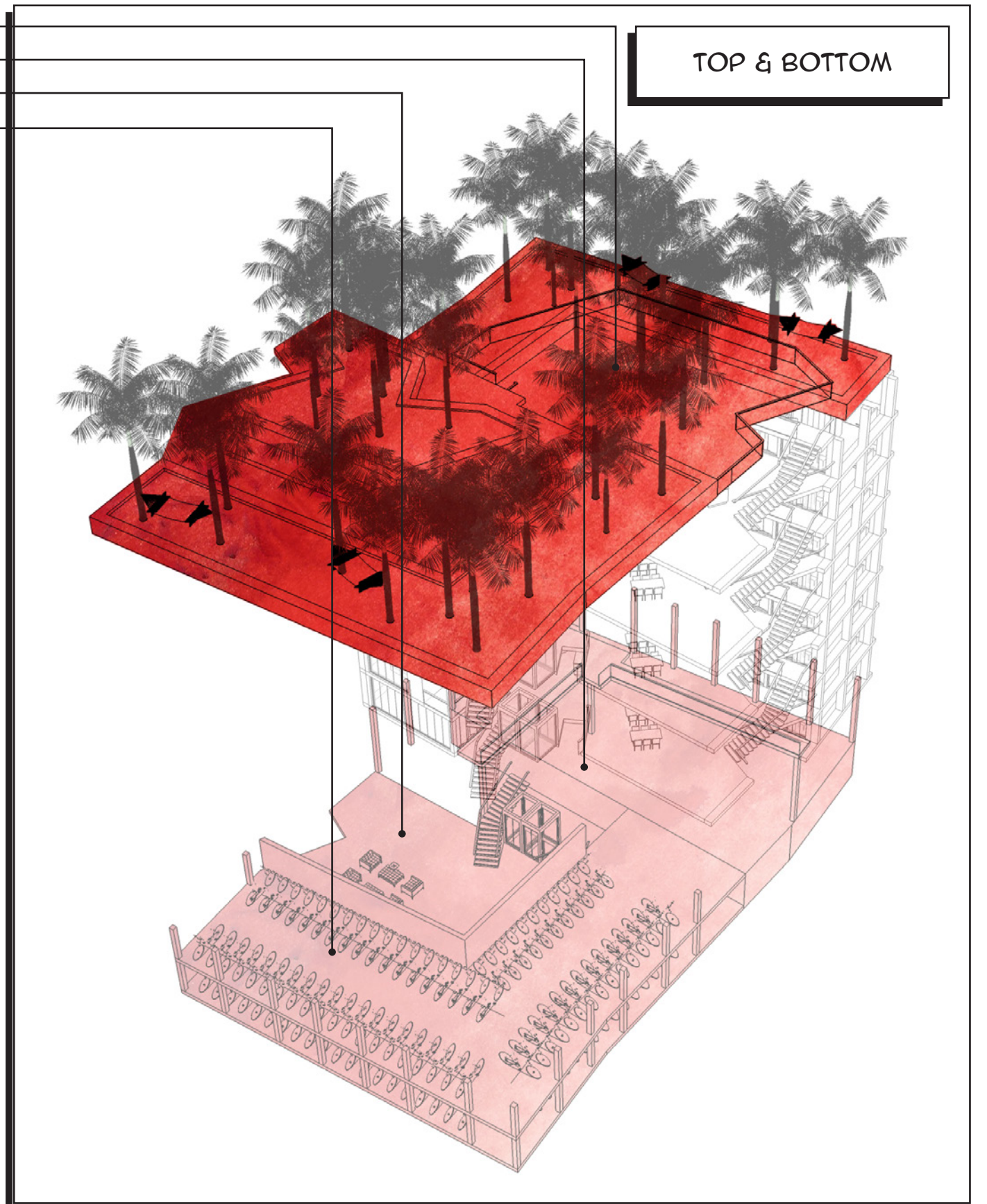


EXTERIOR



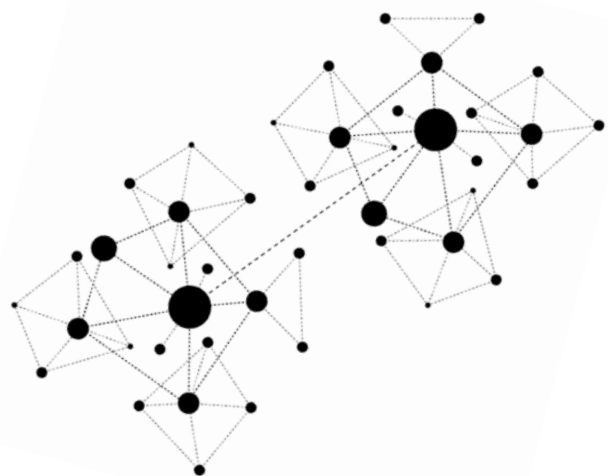
- POWERDECK
- COMMON SPACE
- SALON
- BICYCLE STORAGE

TOP & BOTTOM

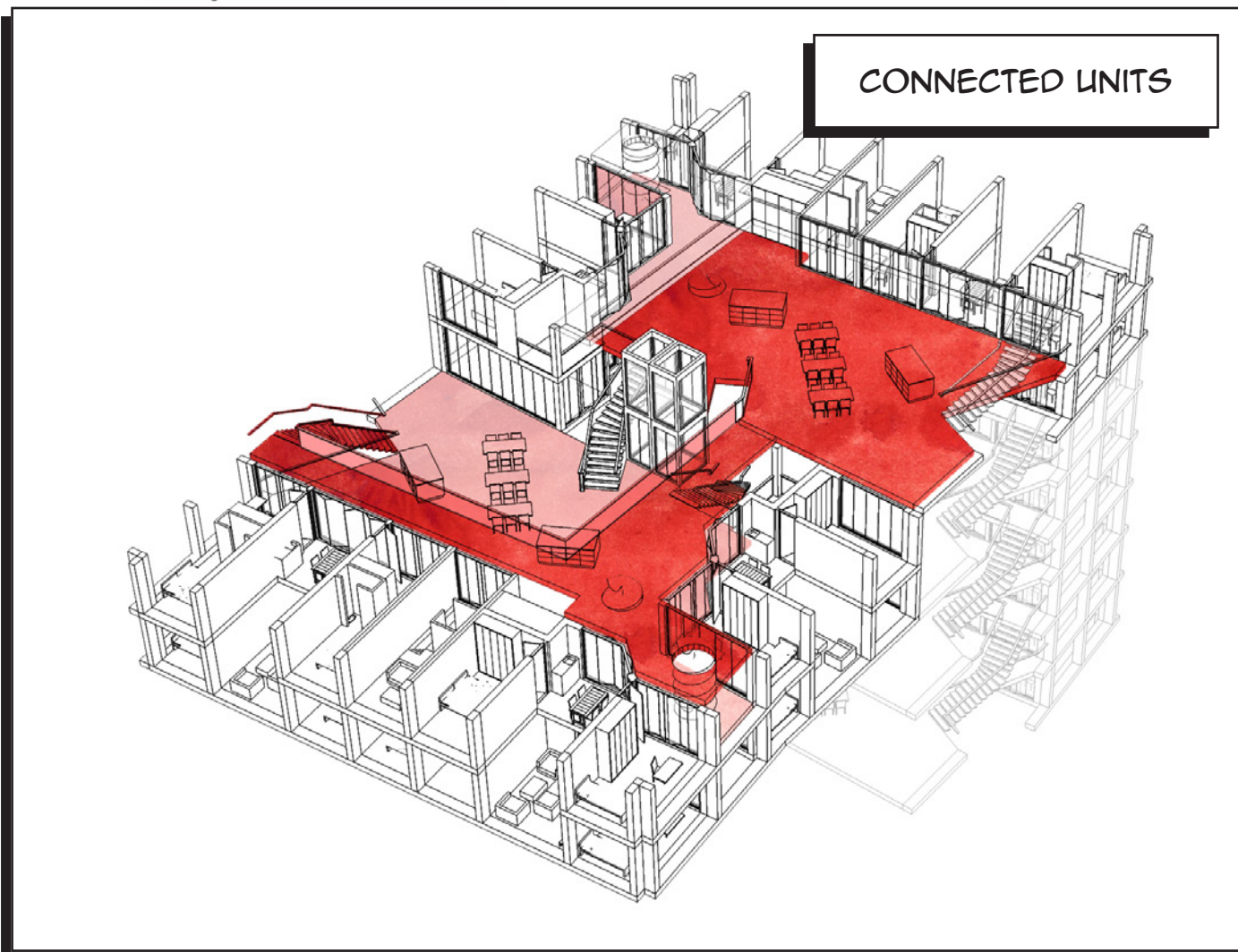


SHACKLED UNITS

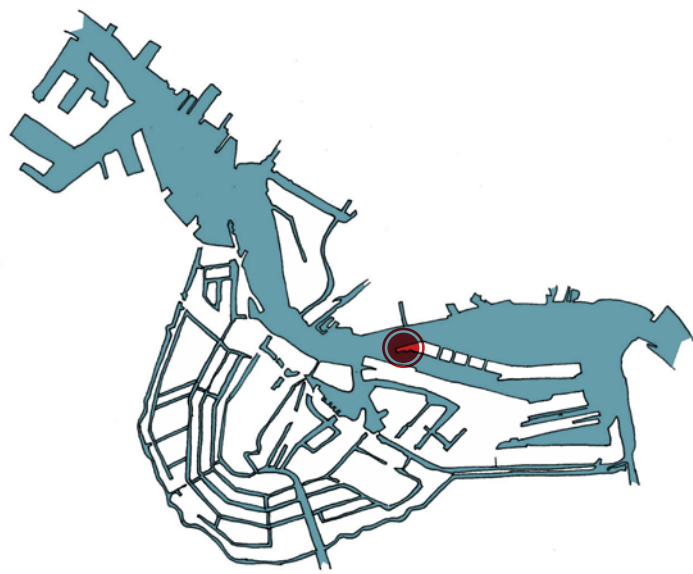
THE UNITS ARE CONNECTED THROUGH A CENTRAL STAIRCASE. EVERY APARTMENT IS ABLE TO SEE AT LEAST ONE DINER SO PEOPLE ARE ABLE TO ALTERNATE BETWEEN DINNERS FOR THEIR MEALS.



CONNECTED UNITS

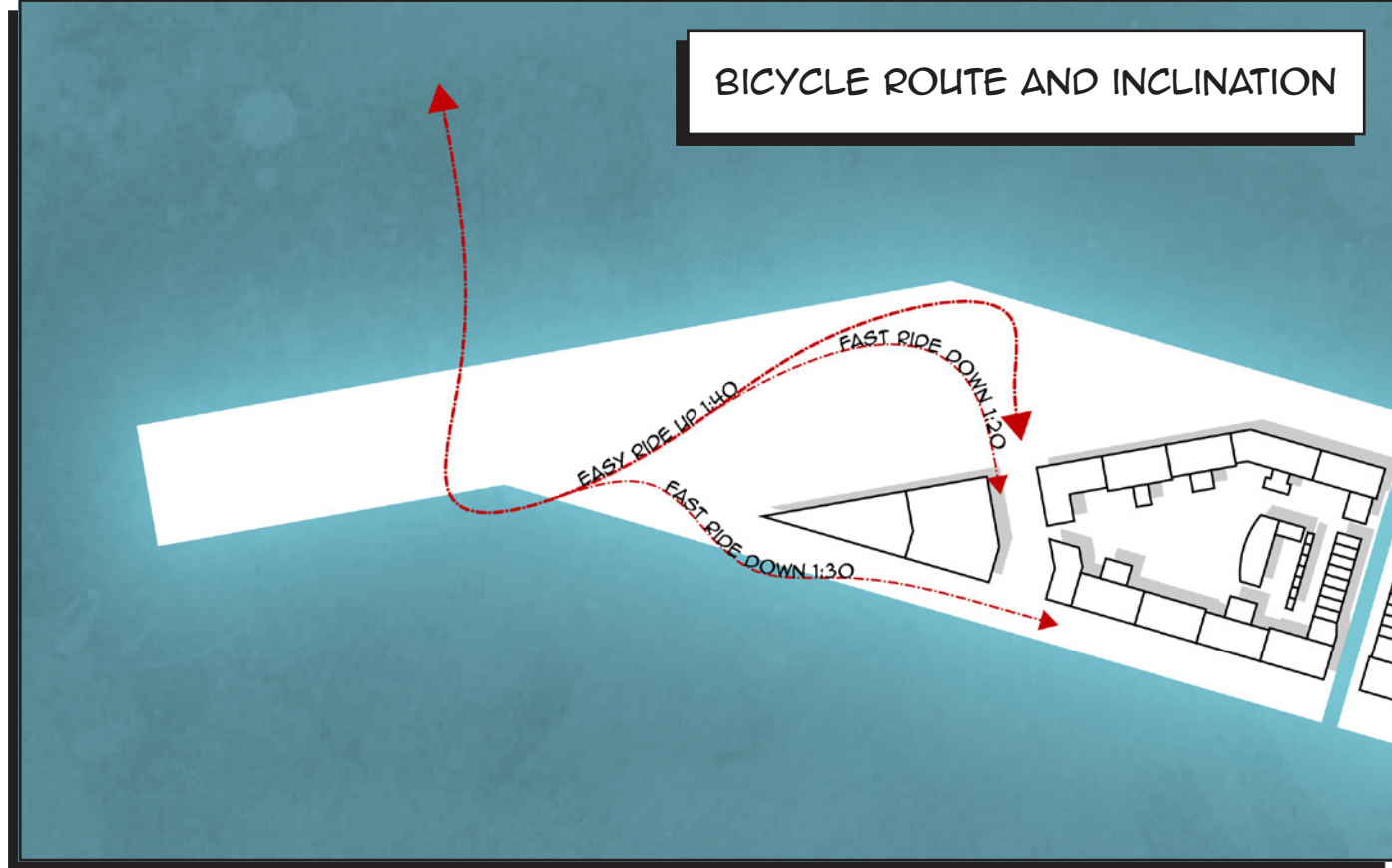


A SUBTLE REMINDER

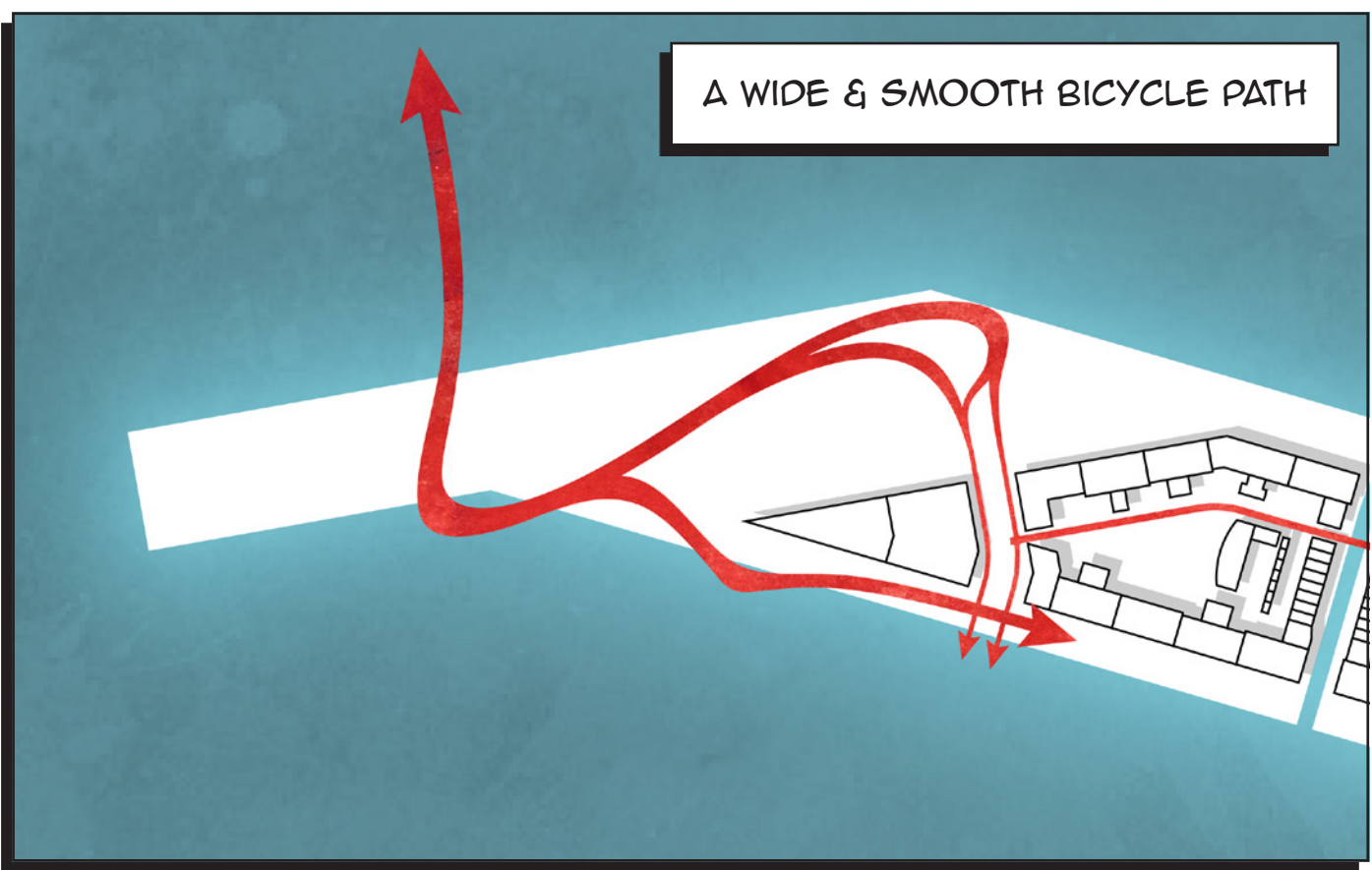


THE SITE AT JAVA ISLAND IS AIMED TO BE THE SOUTHERN LANDING SPOT FOR THE NEW BICYCLE BRIDGE OVER THE RIVER IJ. INSTEAD OF A RIDE ON A RICKETY RAMP A LANDSCAPE SHOULD CREATE A SMOOTH, STABLE AND ADVENTUROUS RIDE. IT SERVES AS THE BASE FOR THE COMMON BUILDINGS. APART FROM A SMOOTH RIDE THE PATH IS A REMINDER OF THE STILL ONGOING BATTLE IN AMSTERDAM THAT STARTED IN THE '60'S AND '70'S. IN THAT PERIOD THE CAR, NEW TECHNOLOGY, STARTED TO FILL UP THE STREETS OF AMSTERDAM RESULTING IN FATAL CASUALTIES, MAINLY CHILDREN. BY **PUSHING BACK NEW TECHNOLOGY** AMSTERDAM GAINED IT'S UNIQUE AND ELABORATE BICYCLE NETWORK. THE BICYCLE PATH IS THERE FOR A SUBTLE REMINDER THAT SOMETIMES TECHNOLOGY HAS TO BE PUSHED BACK TO CREATE TRUE VALUE.

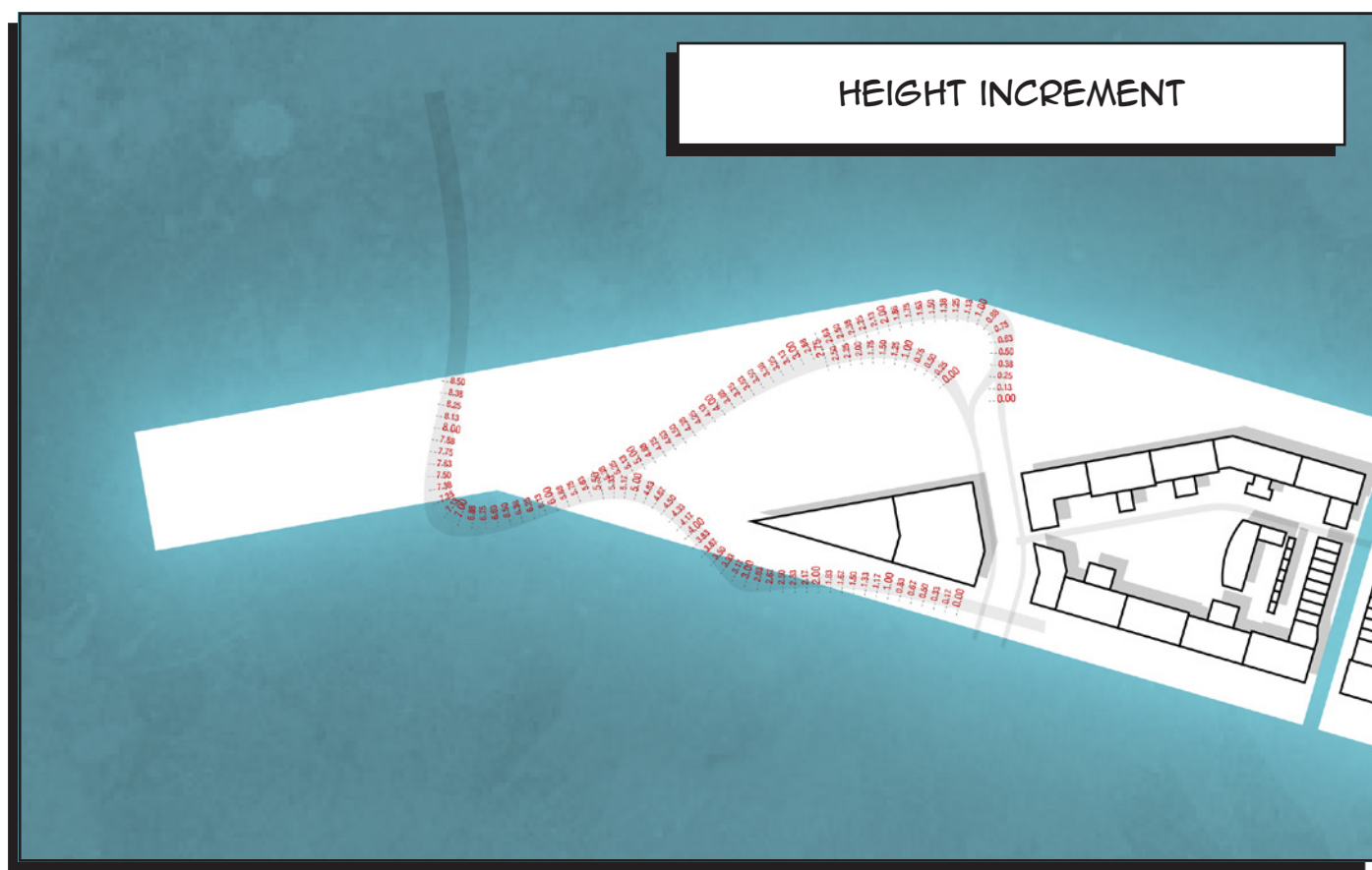
BICYCLE ROUTE AND INCLINATION



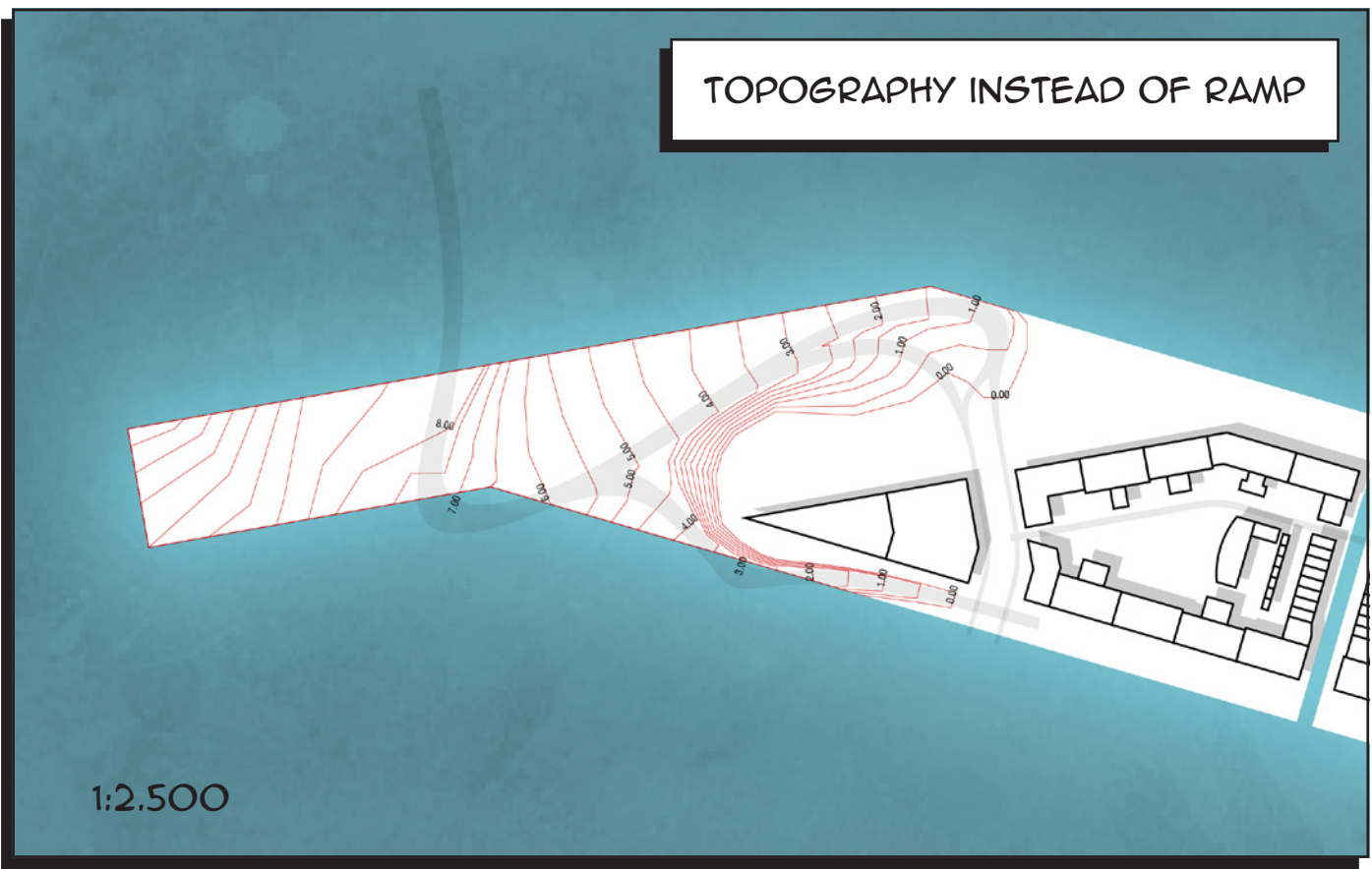
A WIDE & SMOOTH BICYCLE PATH



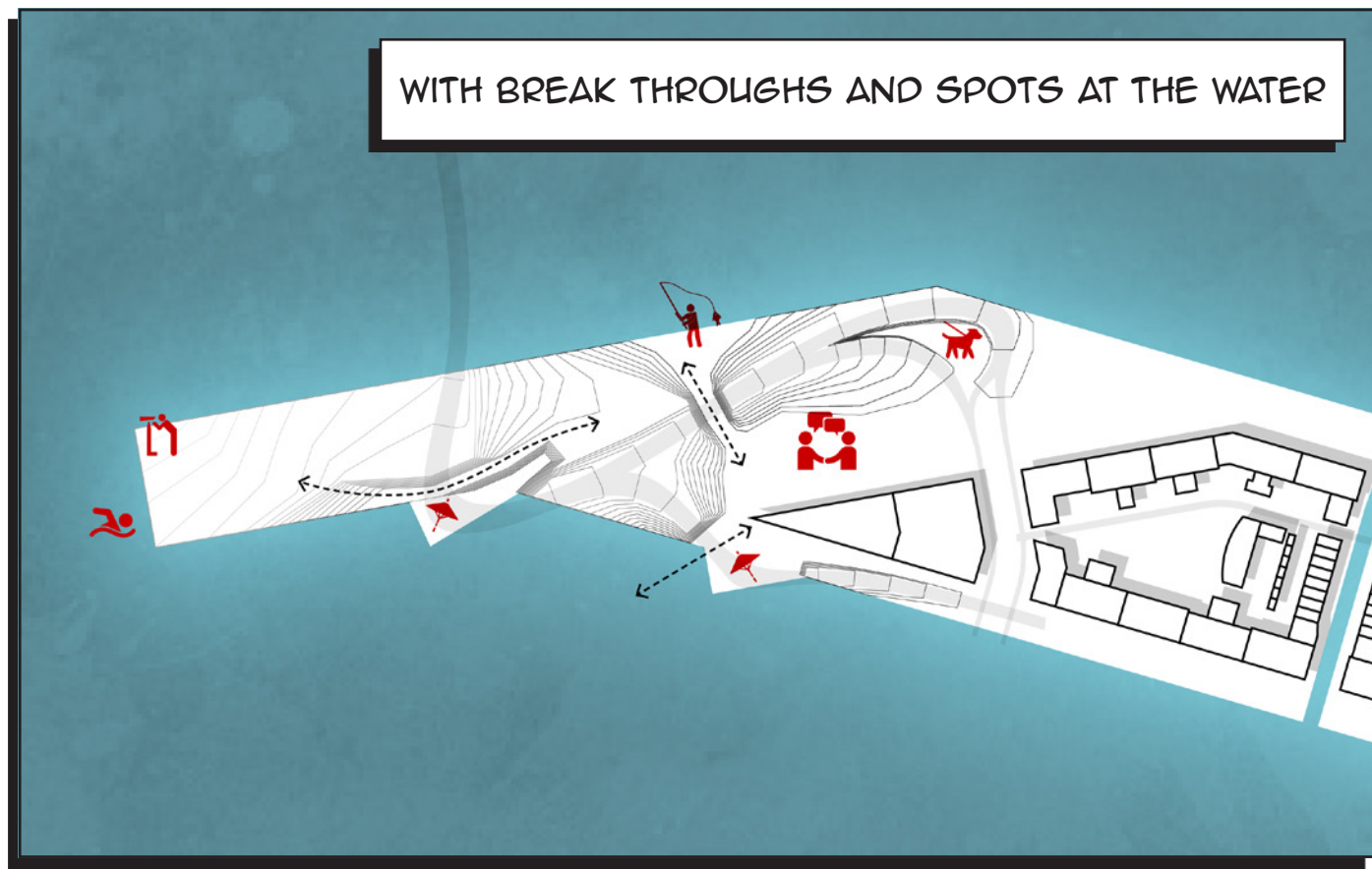
HEIGHT INCREMENT



TOPOGRAPHY INSTEAD OF RAMP



WITH BREAK THROUGHS AND SPOTS AT THE WATER



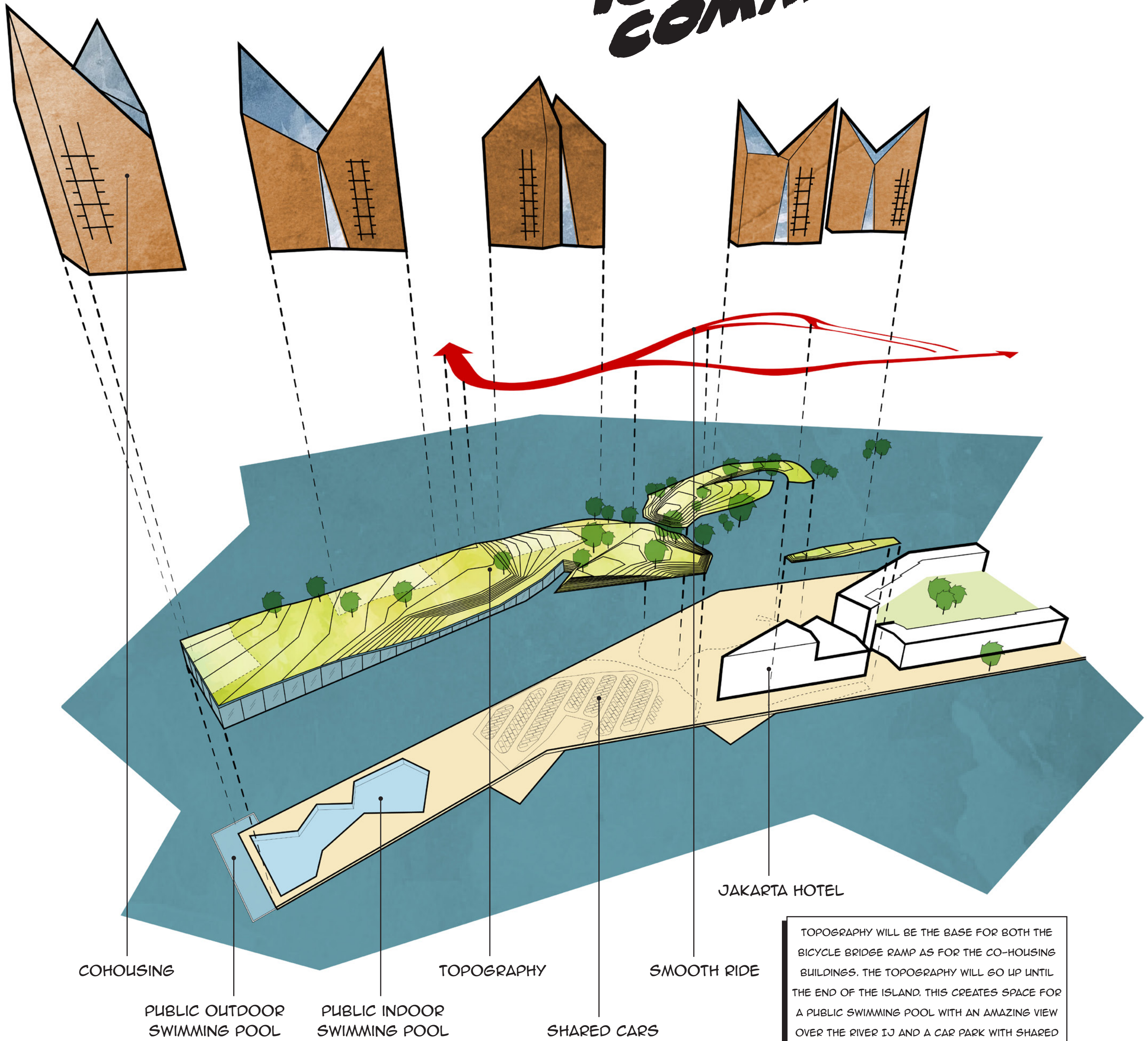
1:2.500

MASTERPLAN



1:1.000

ICONIC COMMONS



COHOUSING

PUBLIC OUTDOOR
SWIMMING POOL

PUBLIC INDOOR
SWIMMING POOL

TOPOGRAPHY

SHARED CARS

SMOOTH RIDE

JAKARTA HOTEL

TOPOGRAPHY WILL BE THE BASE FOR BOTH THE BICYCLE BRIDGE RAMP AS FOR THE CO-HOUSING BUILDINGS. THE TOPOGRAPHY WILL GO UP UNTIL THE END OF THE ISLAND. THIS CREATES SPACE FOR A PUBLIC SWIMMING POOL WITH AN AMAZING VIEW OVER THE RIVER IJ AND A CAR PARK WITH SHARED CARS FOR THE COMMONERS TO USE.



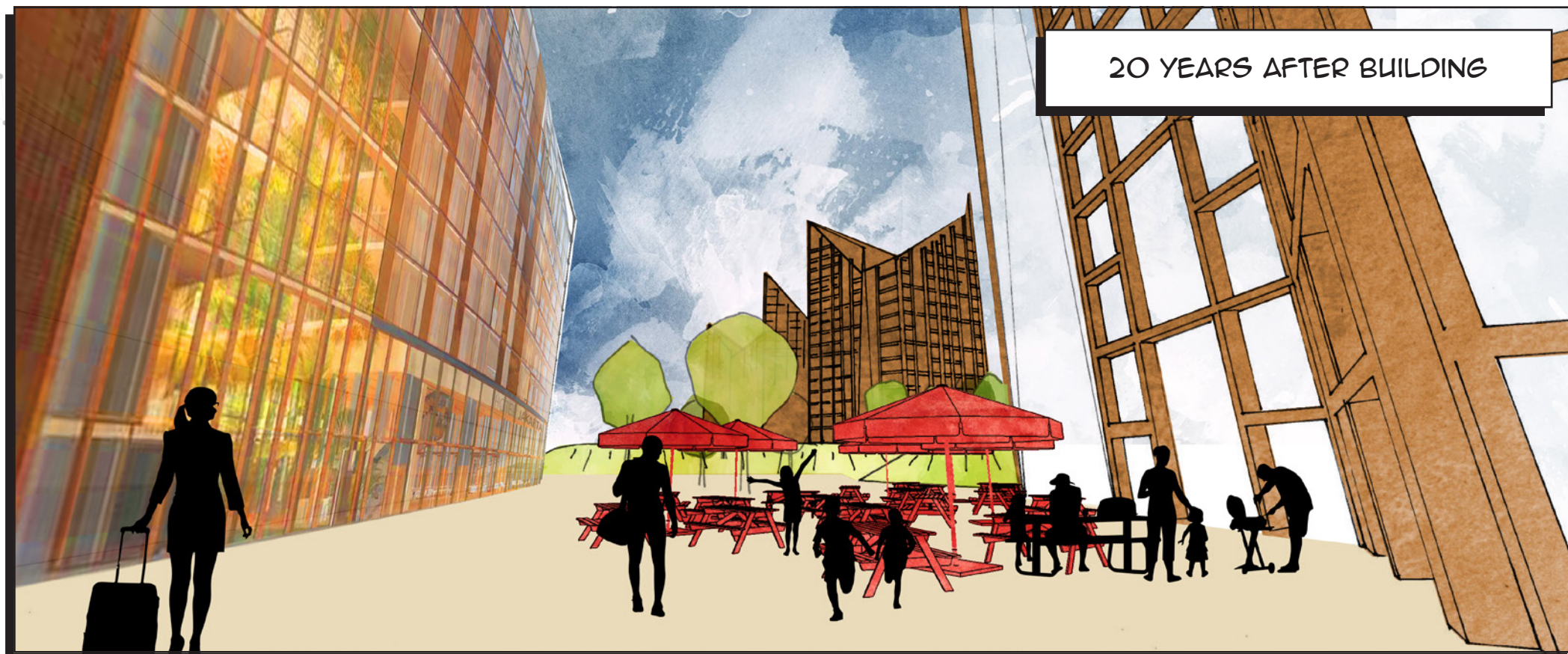
5 YEARS AFTER BUILDING



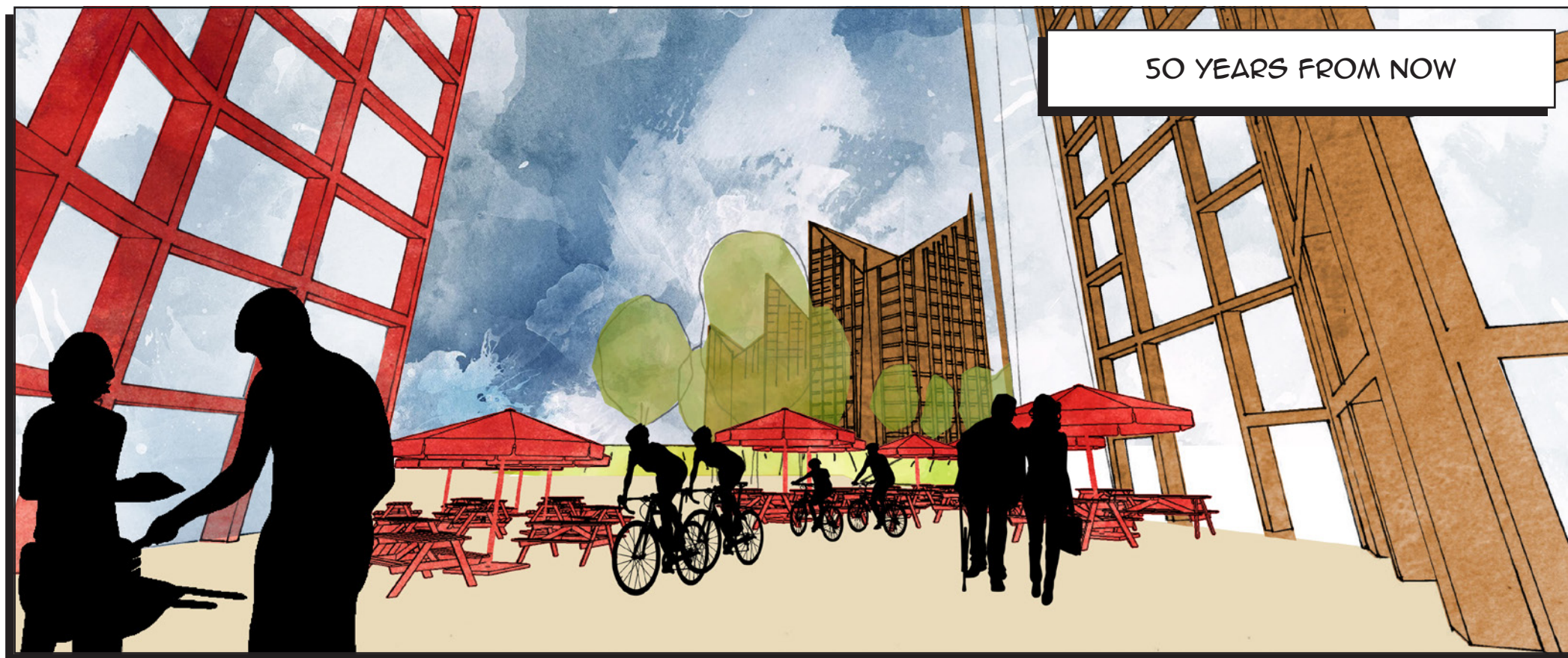
THE FIRST 5 YEARS THE ICONIC COMMONS NEED TO SETTLE, ORGANIZE THEMSELVES AND BUILD THE NETWORK. TOURISTS STAYING AT THE JAKARTA HOTEL ARE MOST NOTICABLE IN THE STREETS.



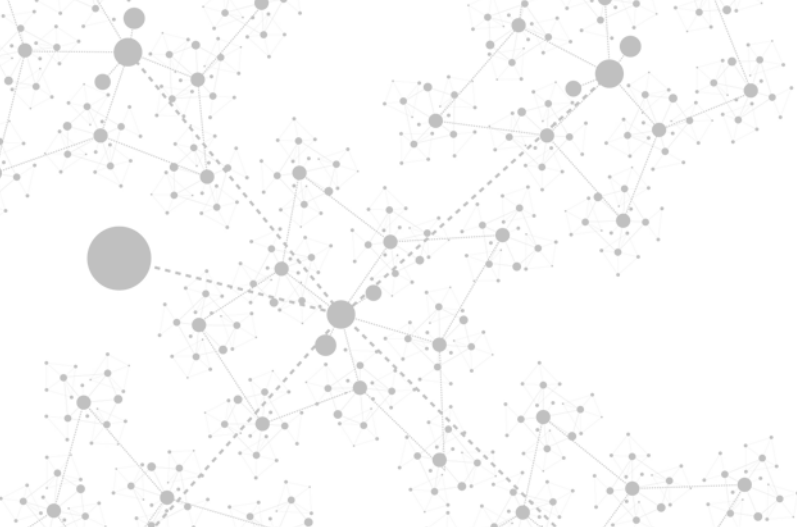
AFTER 20 YEARS THE COMMONS WILL HAVE FULLY SETTLE AND MADE A NETWORK COMMUNITY. BECAUSE THEY ARE USED TO SHARE EVERYTHING THE COMMON GROUND OUTSIDE STARTING TO BEING USED BY THE COMMONERS. AS AMSTERDAM GETS MORE CROWDED EVERYBODY NOW SHARES BICYCLES TO SAVE SPACE ON THE STREETS. PUBLIC BICYCLE STANDS HAVE BEEN REMOVED, THE BICYCLE STORAGE INSIDE THE COMMON BUILDING IS NOW ALSO AVAILABLE FOR THE PUBLIC.



20 YEARS AFTER BUILDING



50 YEARS FROM NOW



IN 50 YEARS THE BLOCK CHAIN SUPPORTED CO-HOUSING HAS SPREAD OVER THE WORLD. TOURISM HAS COMPLETELY CHANGED AS HOUSE SWAPPING IS VERY EASY AND THUS HOTELS ABSOLUTE. BESIDES THAT THE COMMONERS HAVE STARTED THE SPACE FULLY LEAVING NO OTHER OPTION FOR THE JAKARTA HOTEL TO MAKE SPACE FOR ANOTHER COMMON BUILDING TO JOIN THE COMMUNITY.