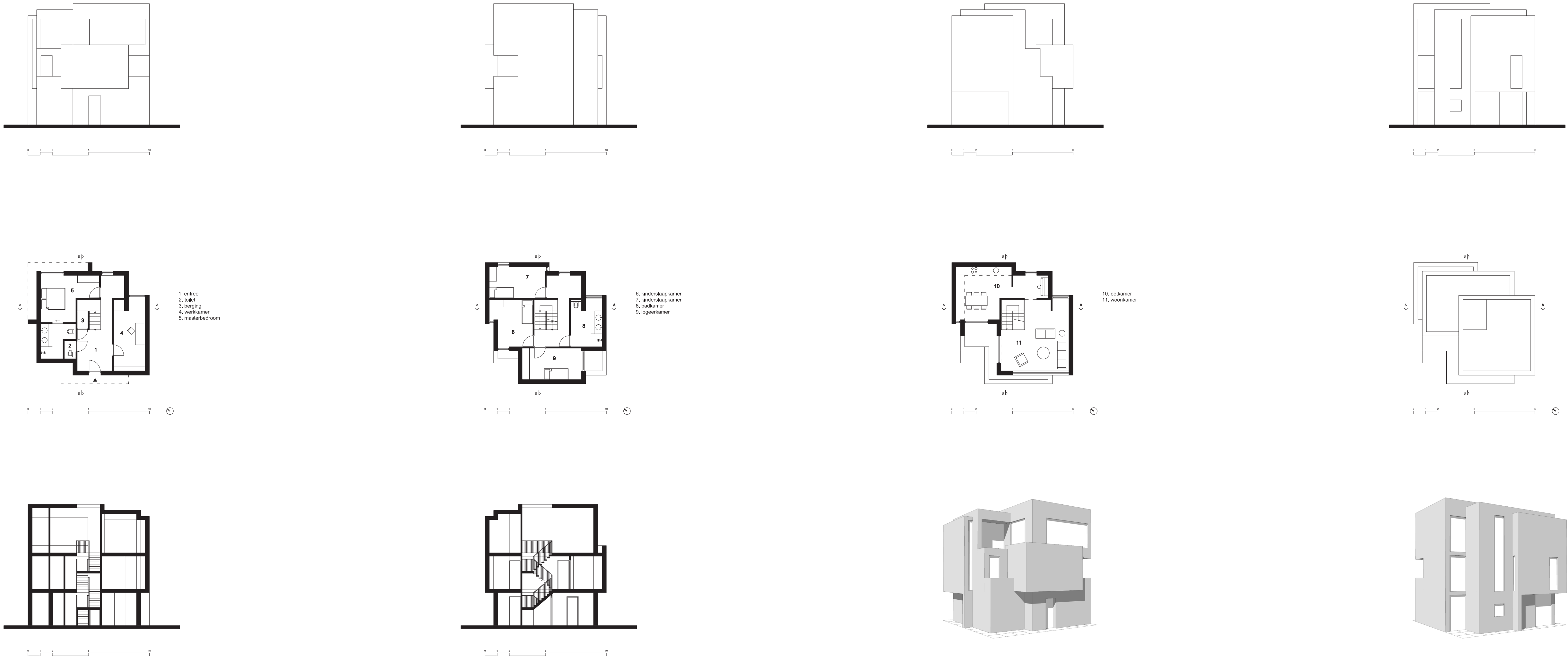


ELEMENTAIR ONTWERPEN

Nick P.H. Tettero

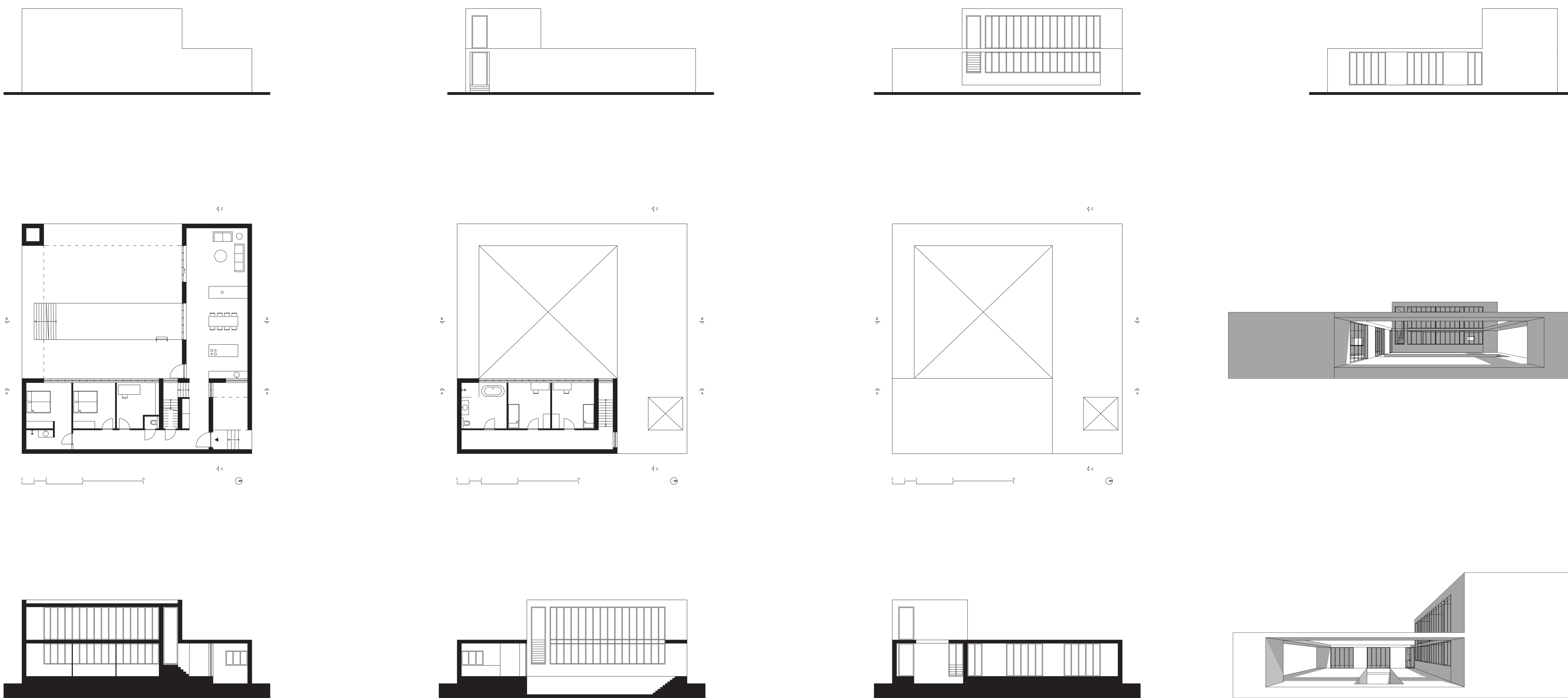
House 1 | XXX | The house fits into a cube of 10 x 10 x 10 meters and touches all surfaces of the cube at least once.



House 2 | Le Tour du Jour | The house has no openings on the outside, except for the front door, which is located at 4.75 meters above ground level.



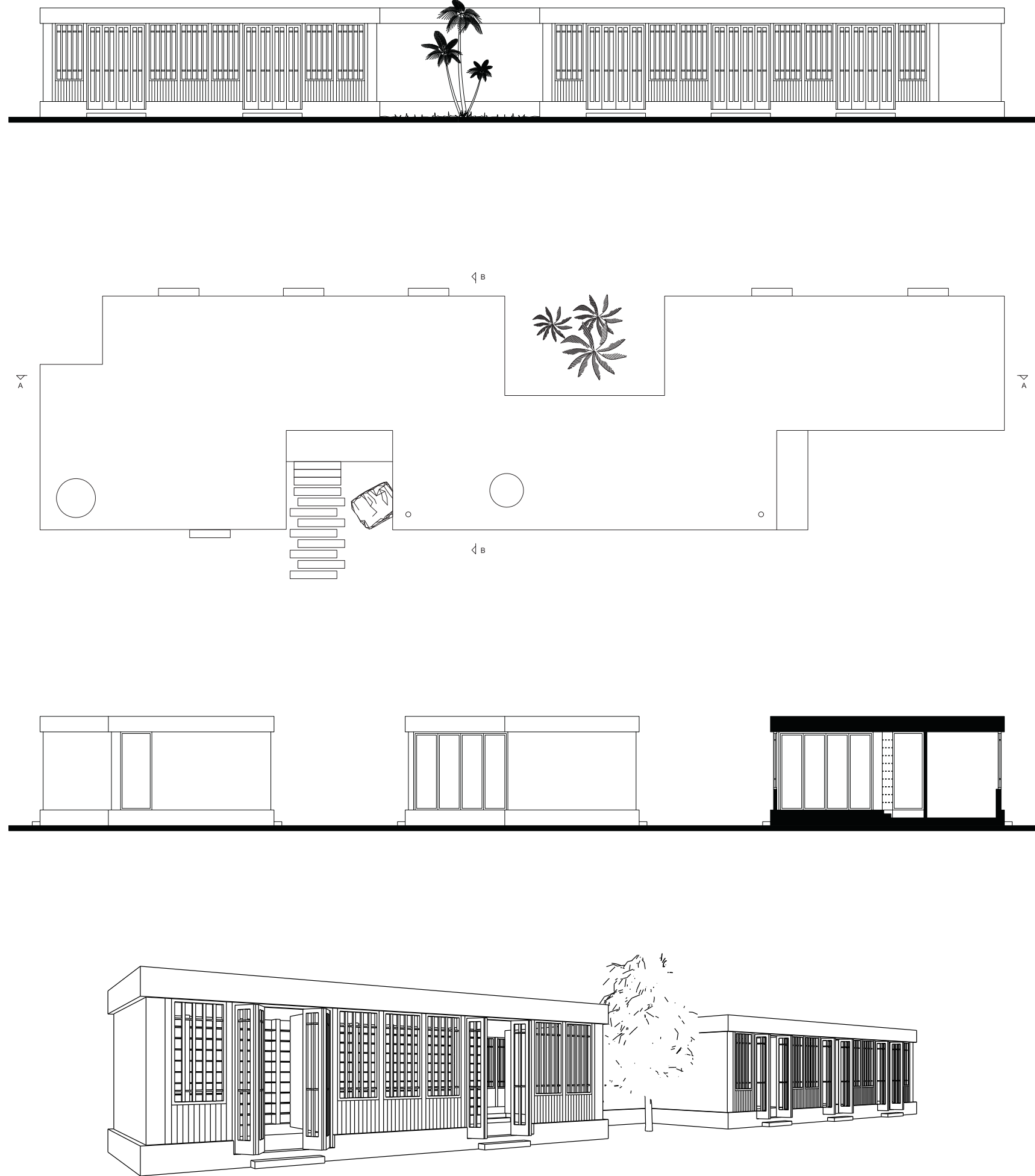
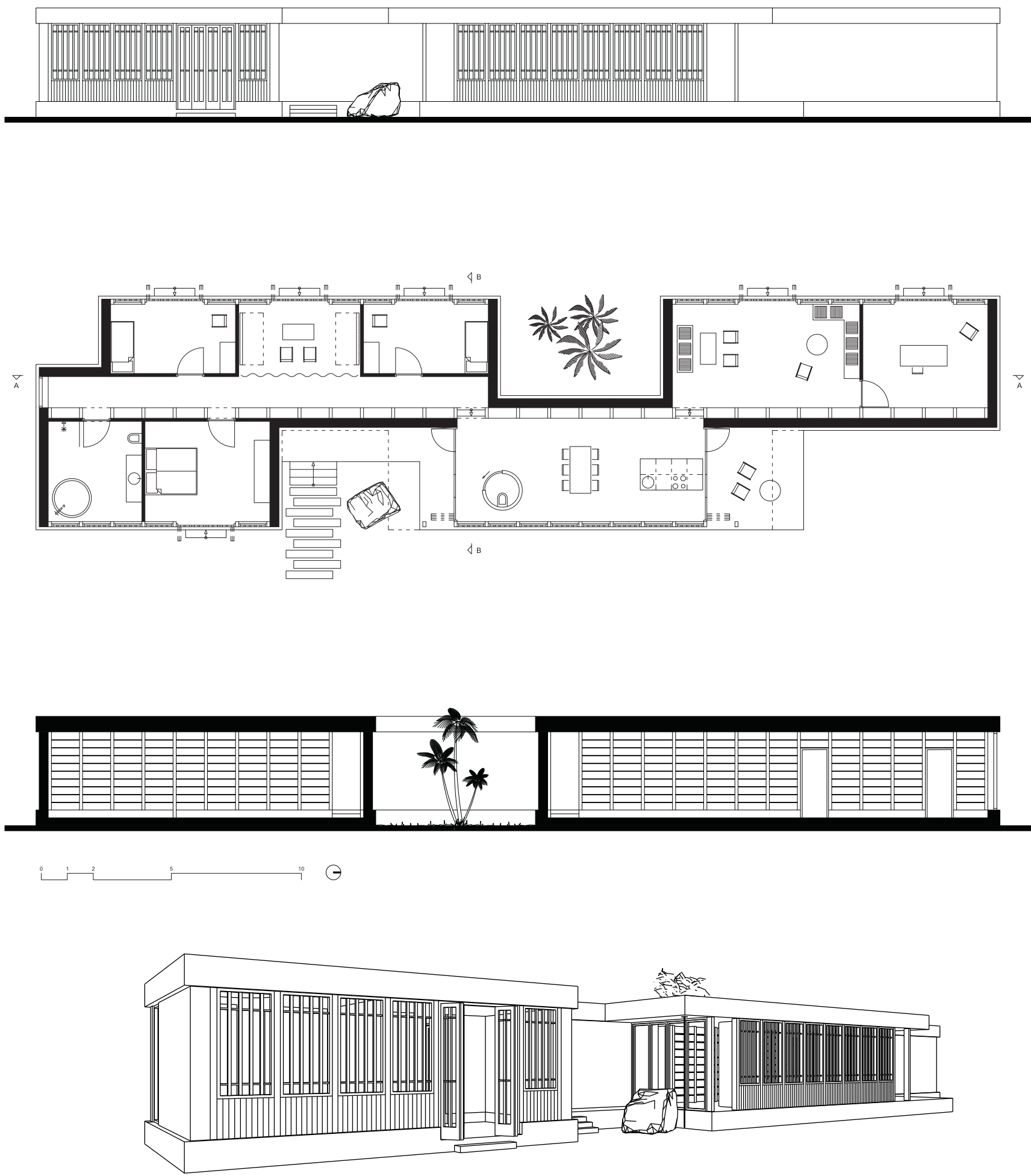
House 3 | Le Tour du Jour | The house has a pool of 12.5 x 3 meters.



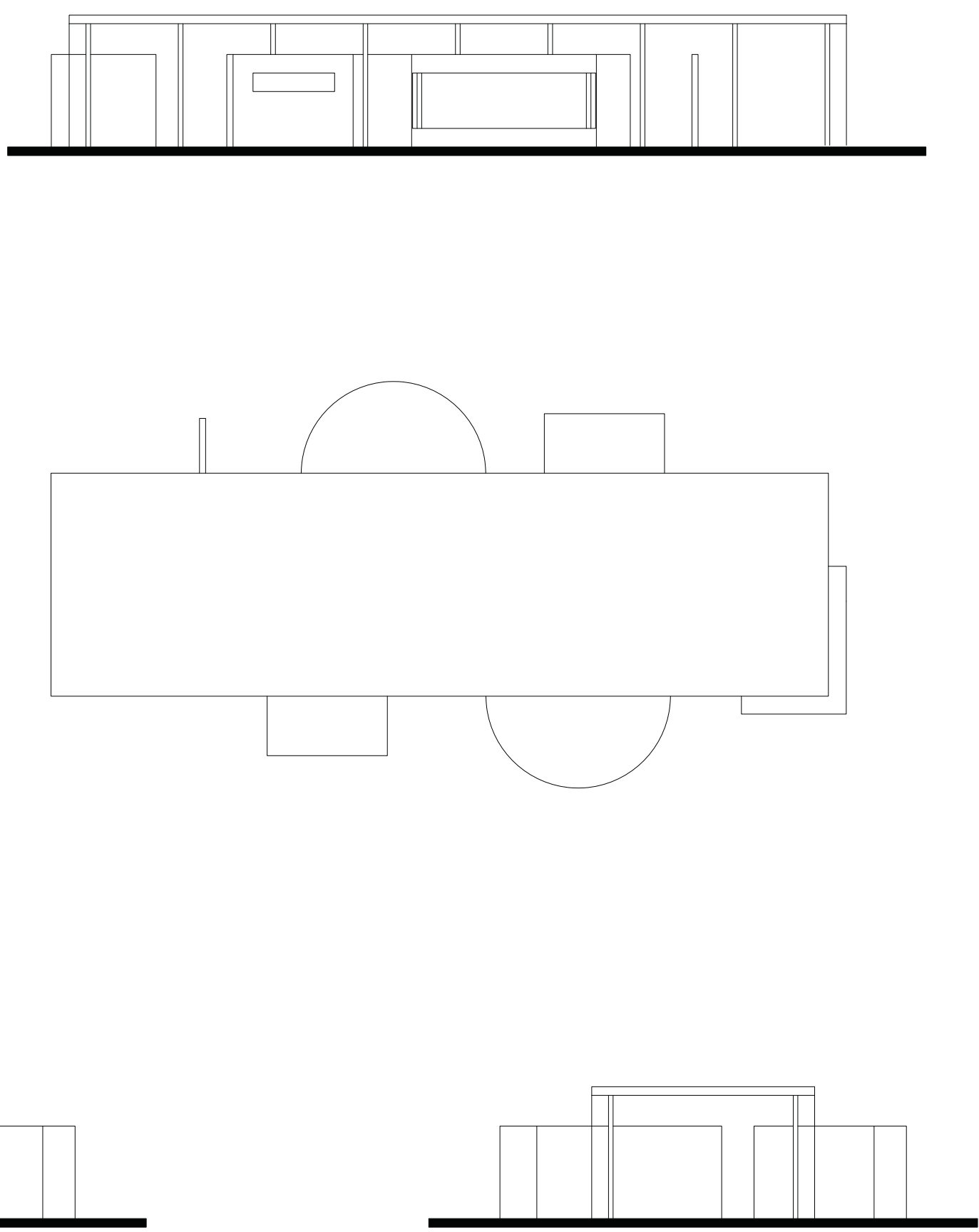
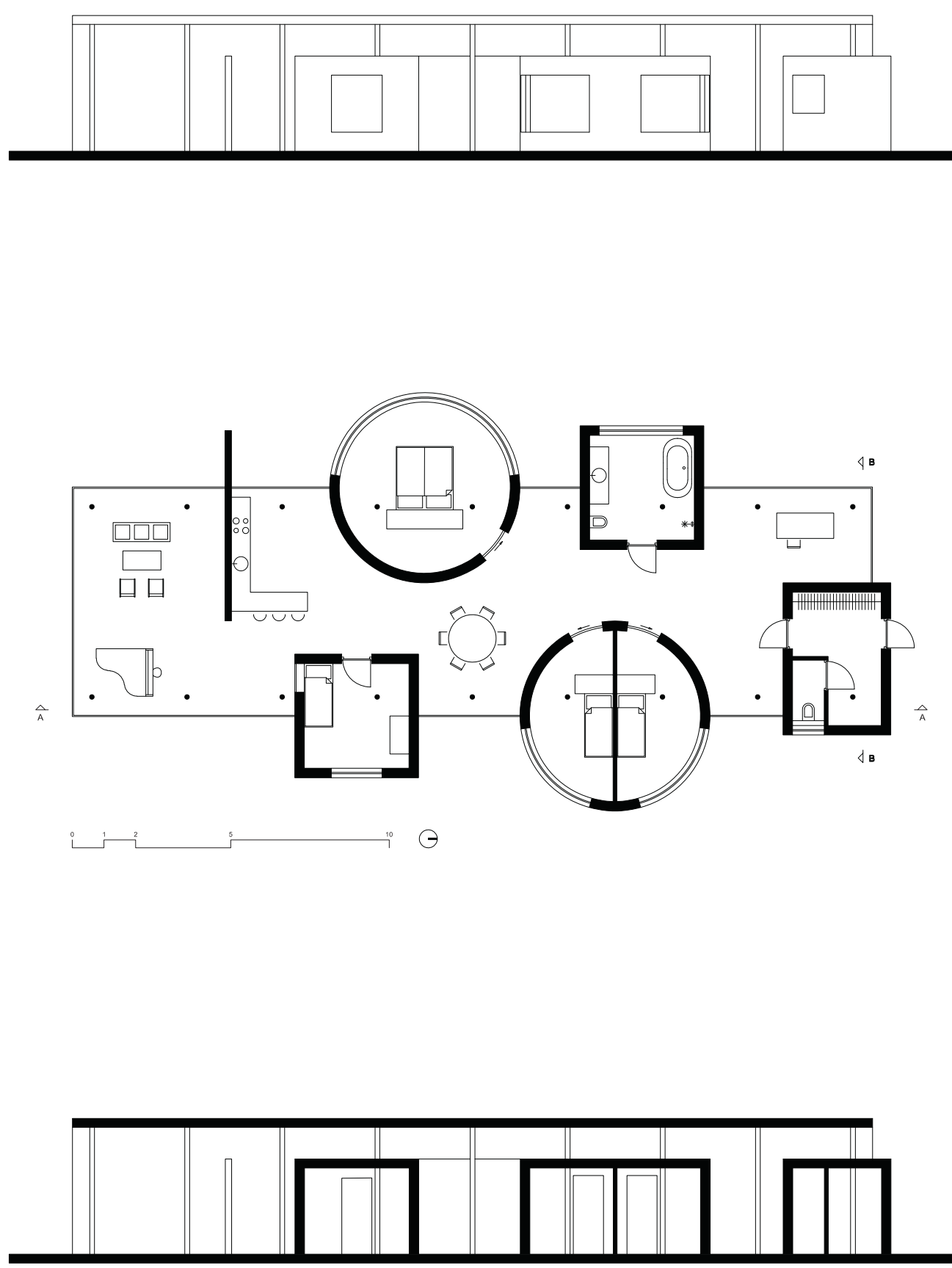
ELEMENTAIR ONTWERPEN

Nick P.H. Tettero

House 4 | The Spine of Books | The house contains space for at least 250 linear meters of books, which must be accessible.



House 5 | The Path of Freedom | The house has no corridor, but doors and stairs are allowed. All rooms are adjacent to each other.



Urban Plan | Copenhagen | Make an urban plan with all of the houses of everyone.

